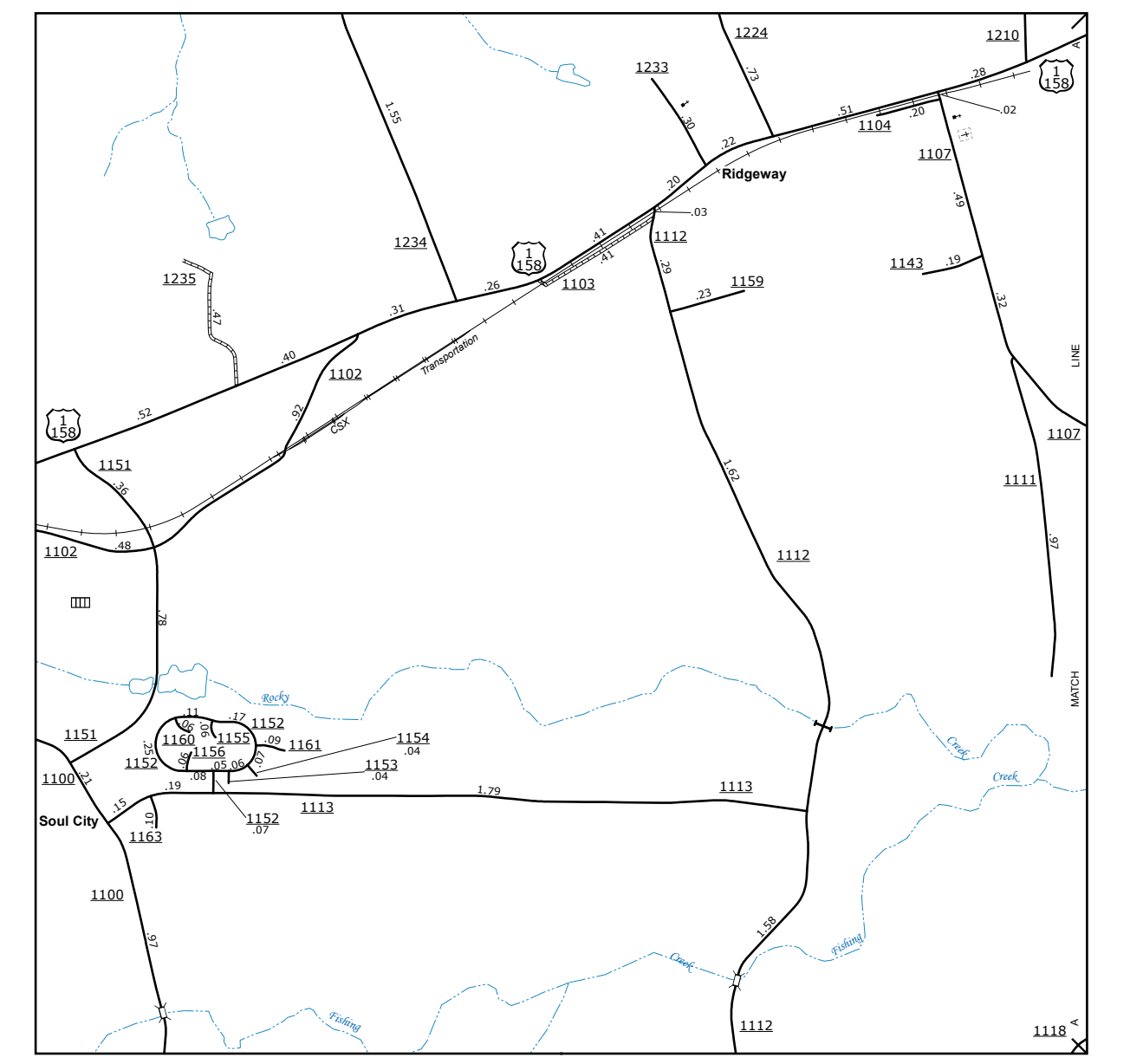
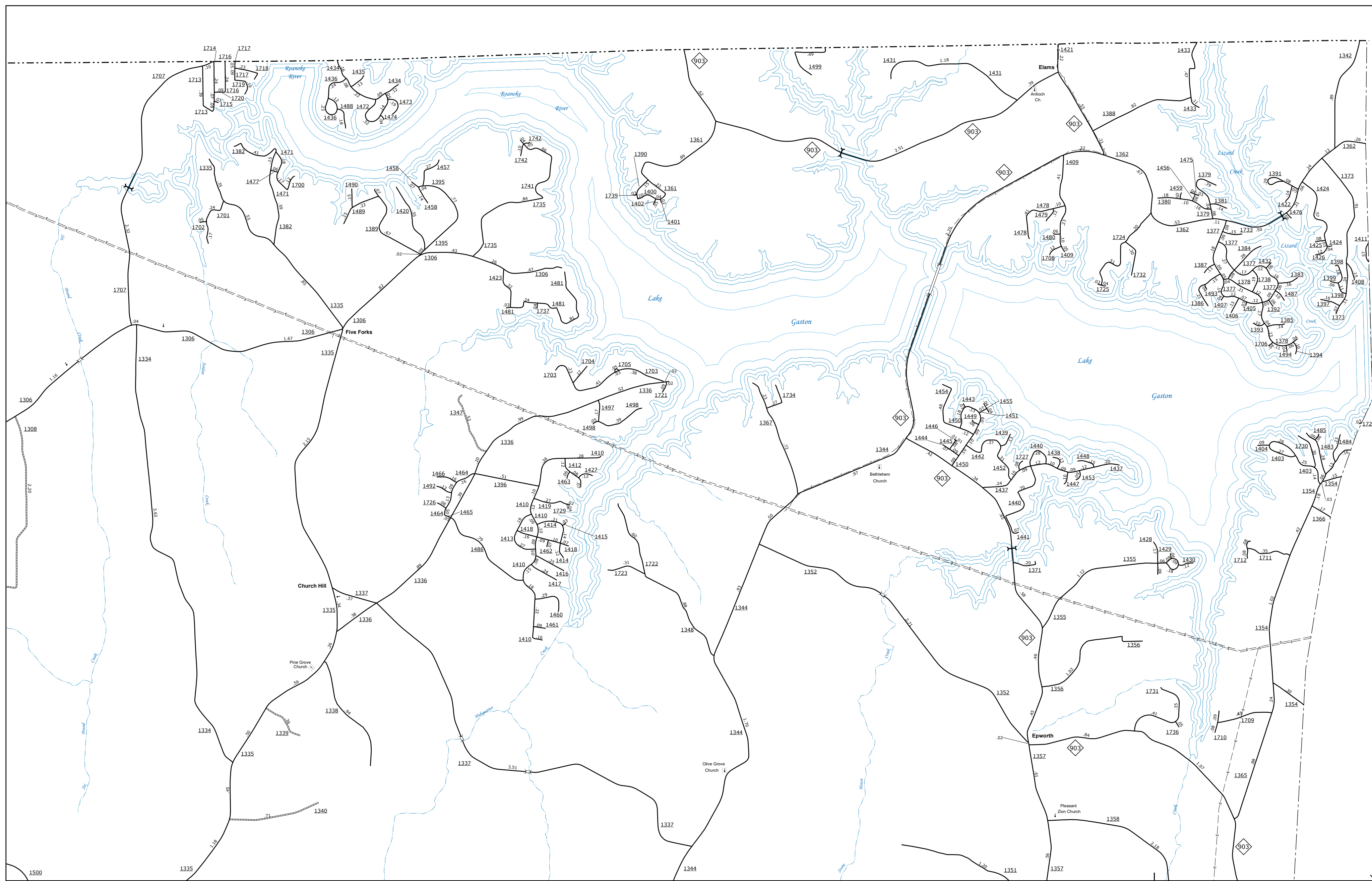


COPIES OF THIS MAP ARE AVAILABLE FROM THE STATE OF NORTH CAROLINA AT A FEE OF \$10 PER COPY. THE FEE INCLUDES THE COST OF THE MAP AND THE COST OF THE INFORMATION PROVIDED. THE FEE DOES NOT INCLUDE THE COST OF THE INFORMATION PROVIDED. THE FEE DOES NOT INCLUDE THE COST OF THE INFORMATION PROVIDED. THE FEE DOES NOT INCLUDE THE COST OF THE INFORMATION PROVIDED.

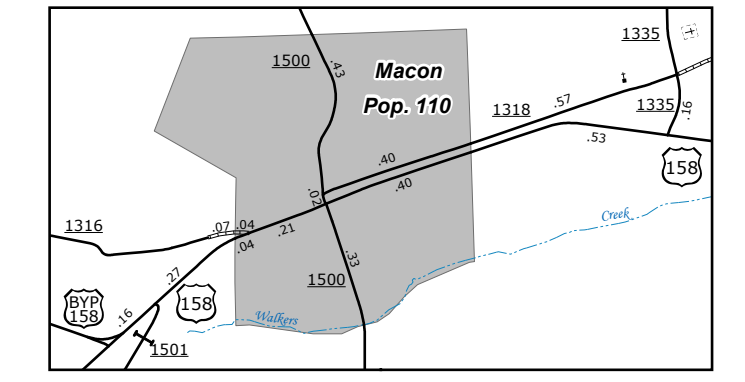
The Mapping Section's goal is to provide the most accurate and current information possible. Map data is compiled from a variety of sources, including aerial photography, ground surveys, and other data. The accuracy of the map is dependent on the accuracy of the data used in its compilation. The accuracy of the data is dependent on the accuracy of the information provided. The accuracy of the information provided is dependent on the accuracy of the information provided. The accuracy of the information provided is dependent on the accuracy of the information provided.

Important non-system roads, such as private roads, are not shown on this map. For additional information, visit <http://www.ncdot.gov/levelofdetail>, and click on Data Providers or contact us by phone at (919) 855-8480.

MS&U - MAPPING SECTION  
6809 BERNI, RD.  
RALEIGH, NC 27606



Ridgeway

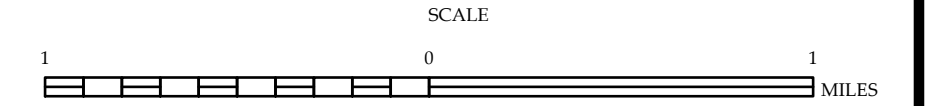


Macon



**ENLARGED MUNICIPAL AND SUBURBAN AREAS**  
**WARREN COUNTY**  
**NORTH CAROLINA**

PREPARED BY THE  
 NORTH CAROLINA DEPARTMENT OF TRANSPORTATION  
 OPERATIONS PROGRAM MANAGEMENT UNIT - MAPPING SECTION  
 IN COOPERATION WITH THE  
 U.S. DEPARTMENT OF TRANSPORTATION  
 FEDERAL HIGHWAY ADMINISTRATION



10,000 FOOT GRID BASED ON NORTH CAROLINA PLANE COORDINATE SYSTEM  
 LAMBERT CONFORMAL CONIC PROJECTION