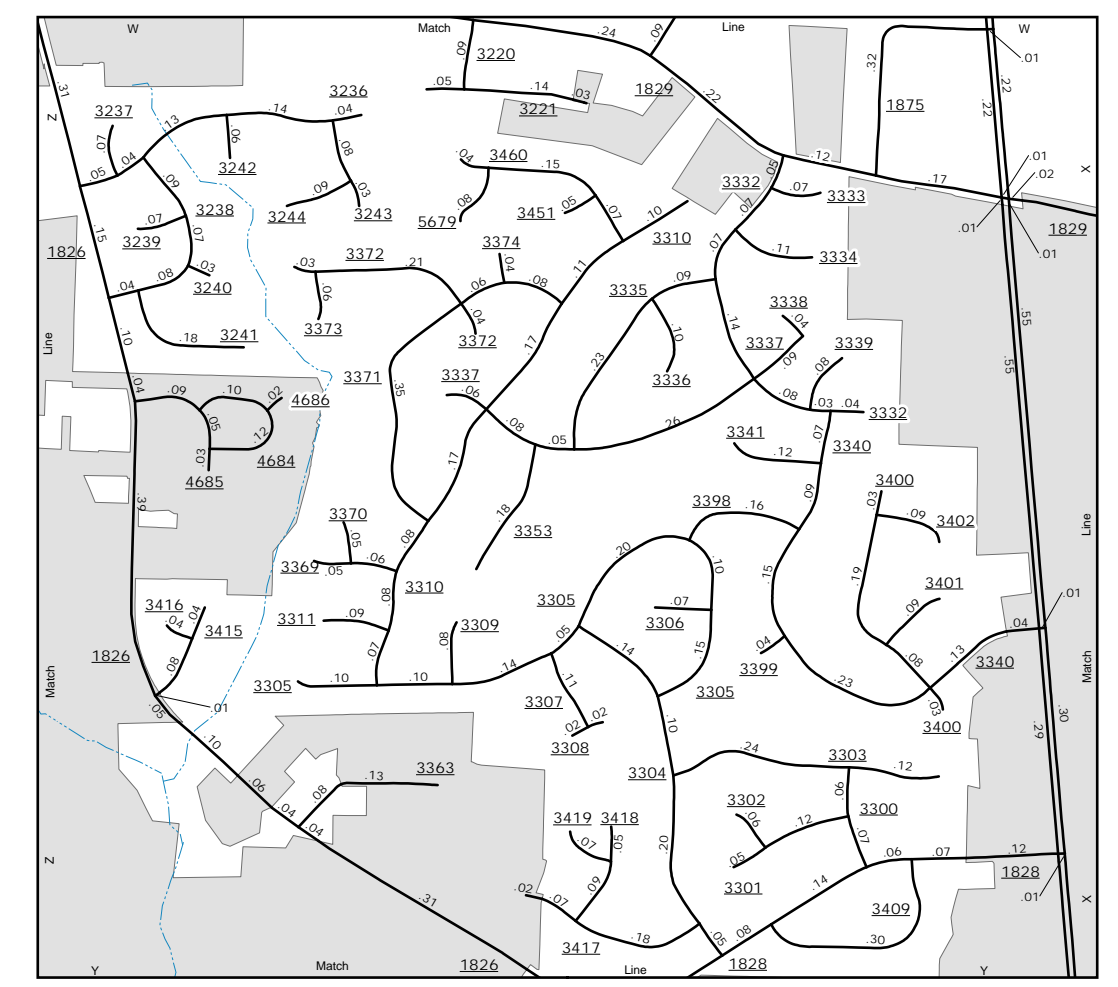
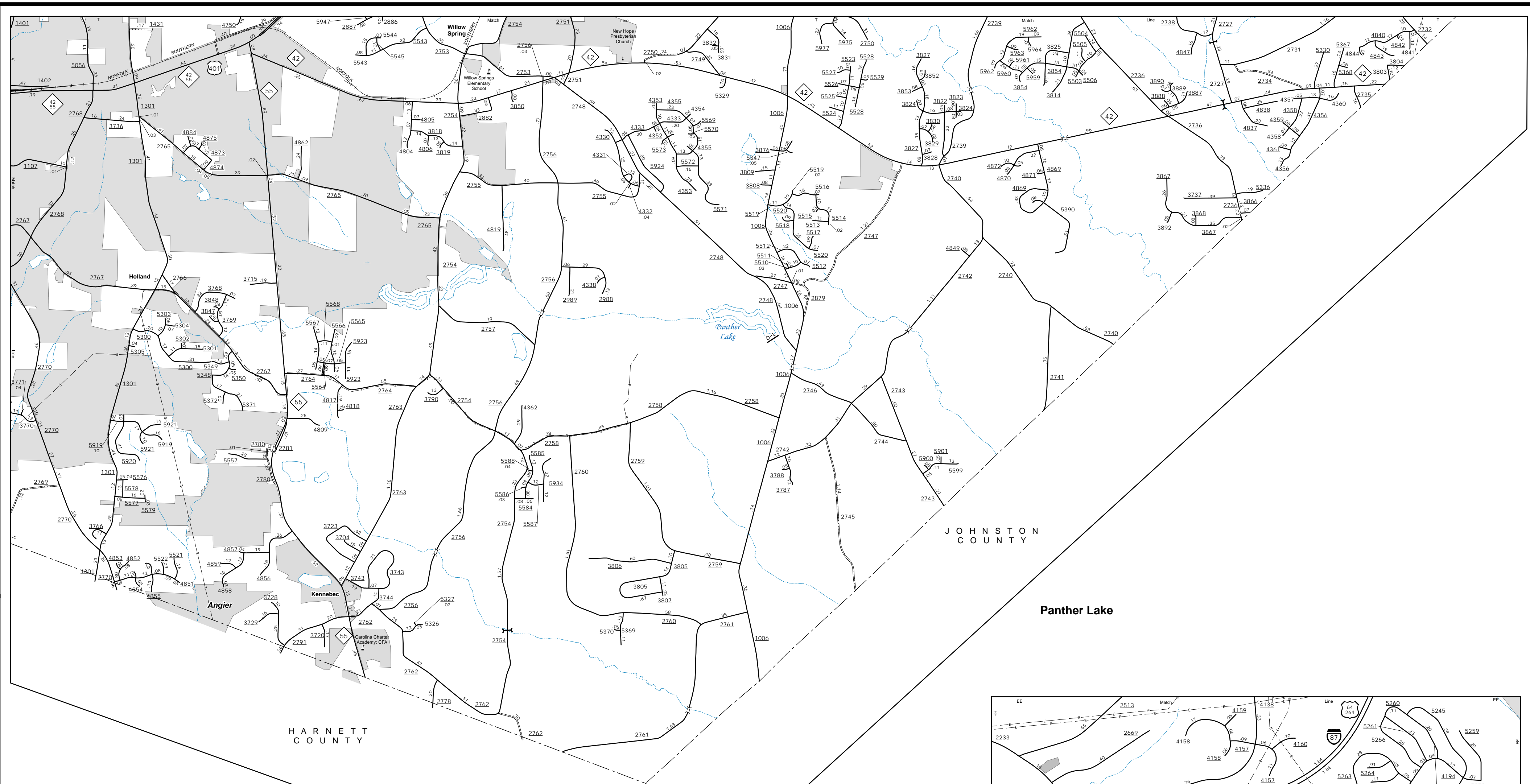
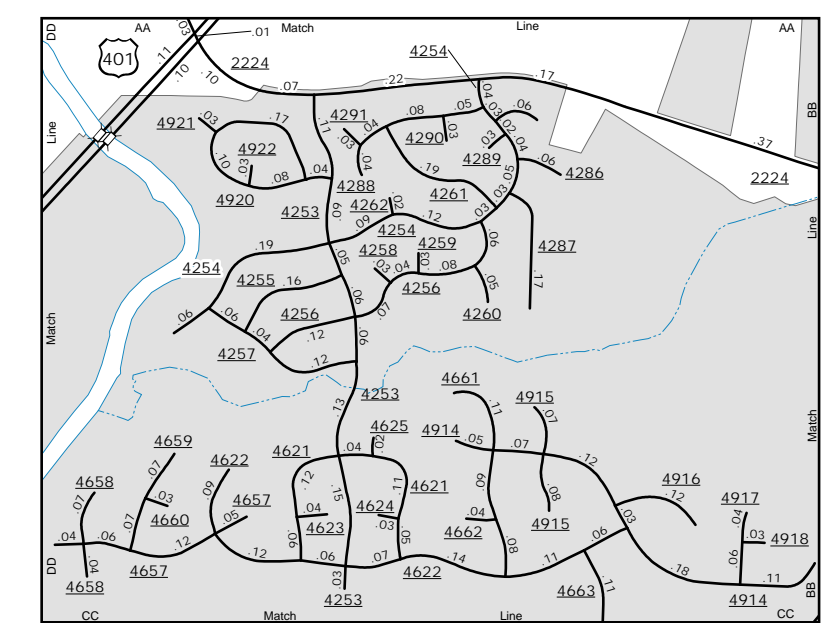
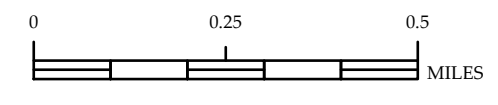


The Mapping Section's goal is to provide the most accurate and current information possible. Map data is compiled from various sources including aerial photography, ground surveys, and other data. The accuracy of the information is not guaranteed. For more information, please contact the Mapping Section at (919) 855-8480. <http://www.ncdot.gov/transportation/operations/program-management-unit-mapping-section>

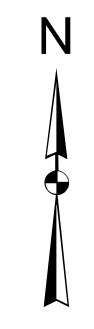
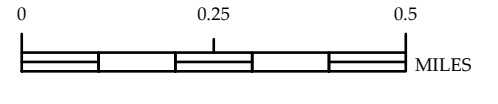
COPIES OF THIS MAP ARE AVAILABLE AT THE PUBLIC INFORMATION CENTER, N.C. DEPARTMENT OF TRANSPORTATION, 4609 BERRY LANE, RALEIGH, NC 27606



Stonehenge



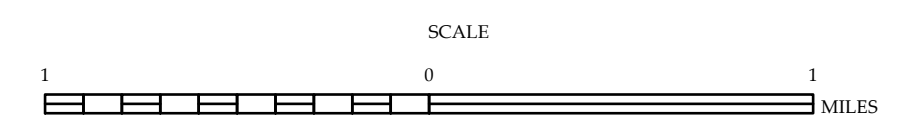
Mitchell Mill



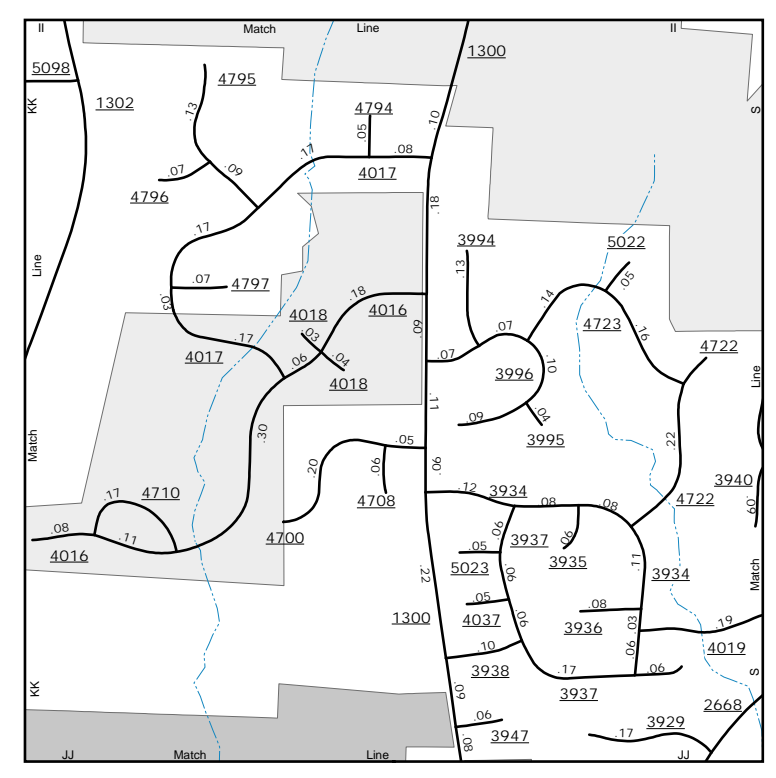
ENLARGED MUNICIPAL AND SUBURBAN AREAS

**WAKE COUNTY
NORTH CAROLINA**

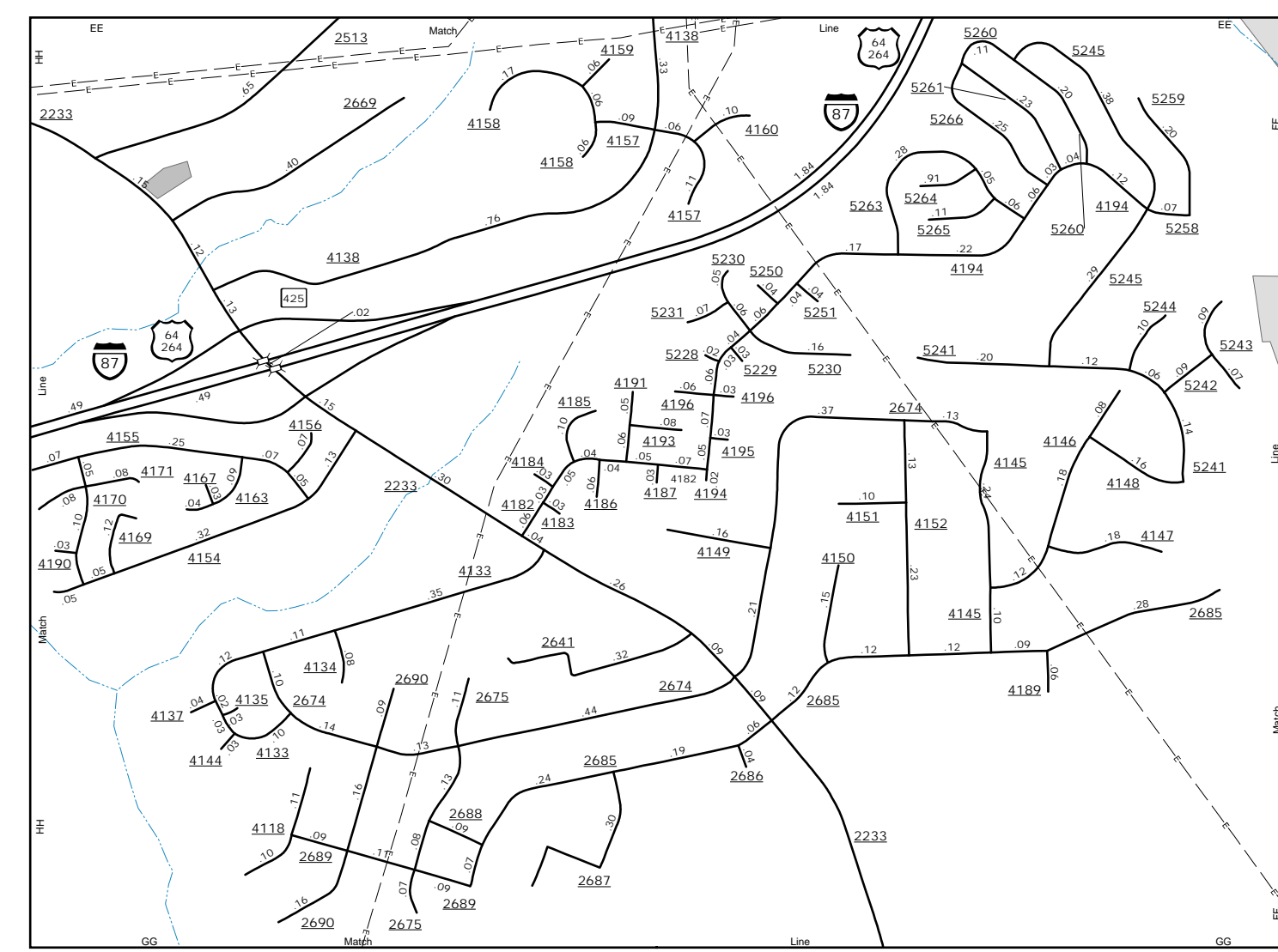
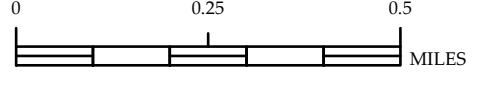
PREPARED BY THE
NORTH CAROLINA DEPARTMENT OF TRANSPORTATION
OPERATIONS PROGRAM MANAGEMENT UNIT - MAPPING SECTION
IN COOPERATION WITH THE
U.S. DEPARTMENT OF TRANSPORTATION
FEDERAL HIGHWAY ADMINISTRATION



10,000 FOOT GRID BASED ON NORTH CAROLINA PLANE COORDINATE SYSTEM
LAMBERT CONFORMAL CONIC PROJECTION



Holly Brook



Baywood

