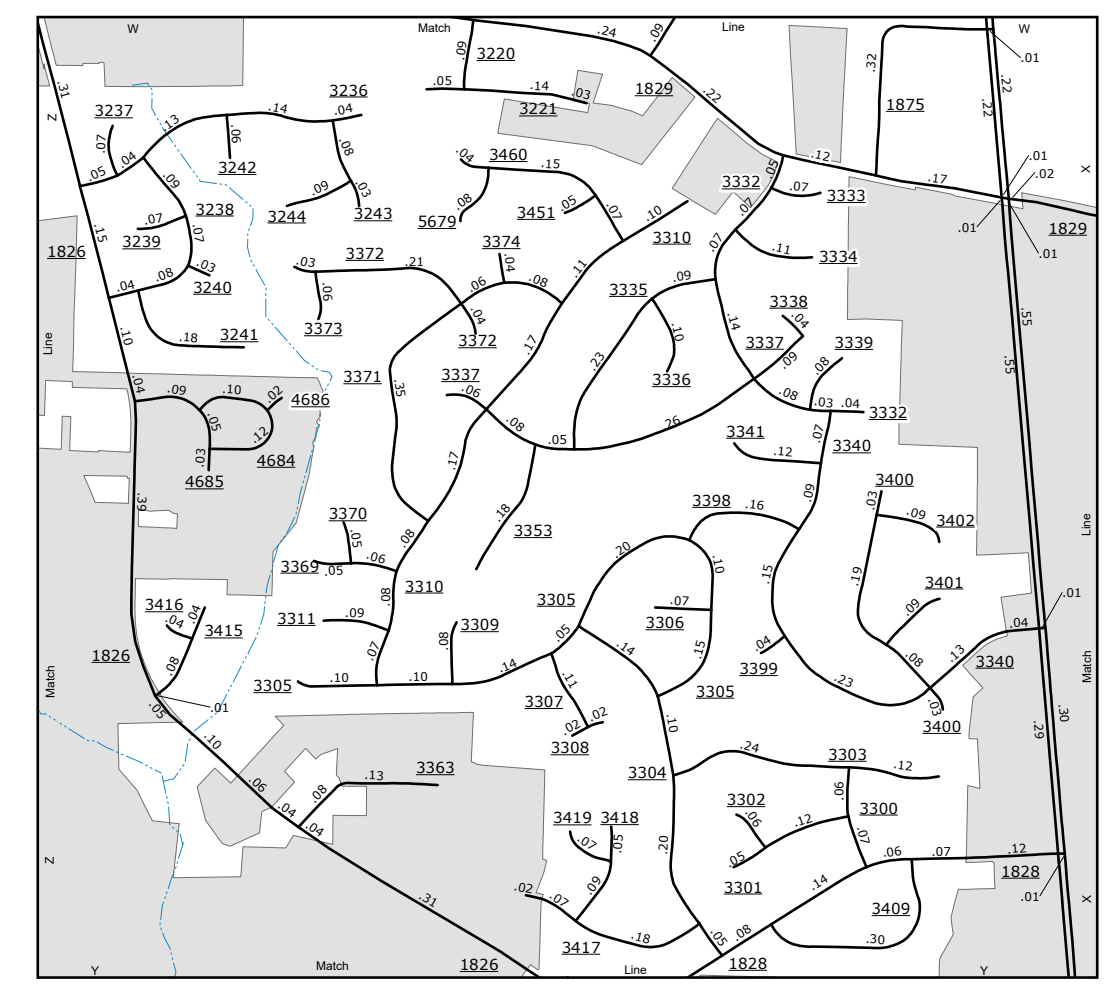
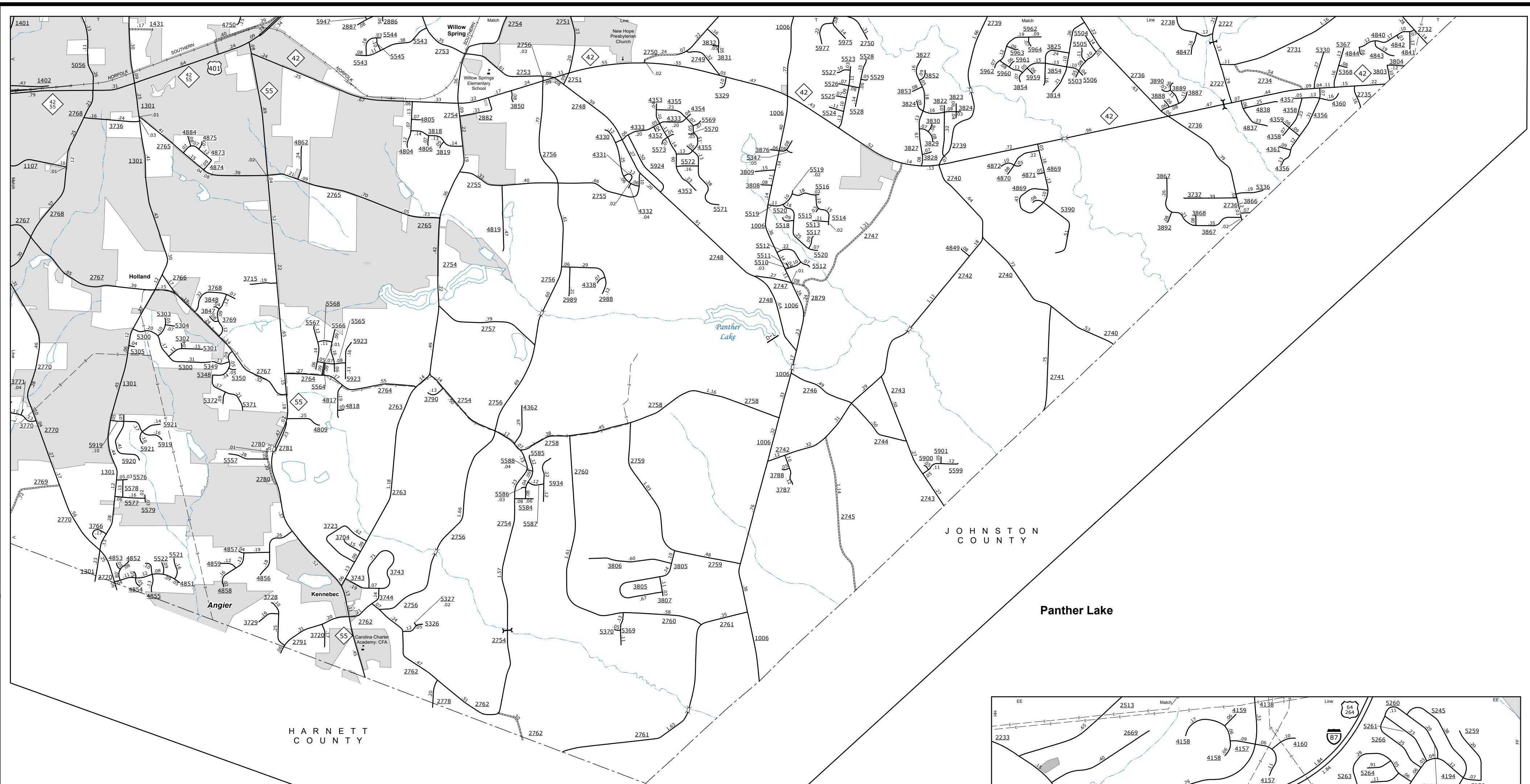
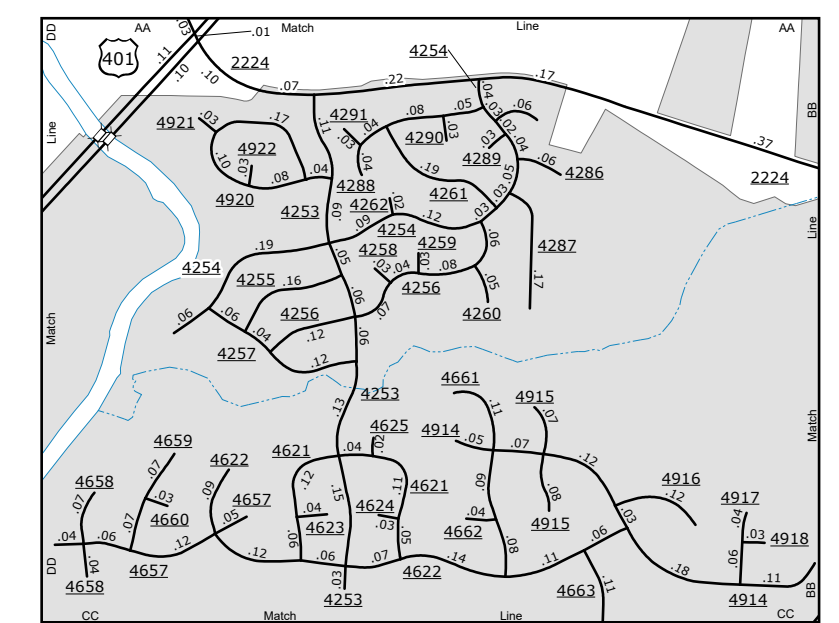


The Mapping Section's goal is to provide the most accurate and current information possible. Map data is compiled from various sources including aerial photography, ground surveys, and other data. The accuracy of the information is dependent on the quality of the data and the methods used to compile the map. The Mapping Section is not responsible for errors or omissions on this map. For more information, visit <http://www.ncdot.gov/transportation/mapping> and click on Data Providers or contact us by phone at (919) 835-8480.

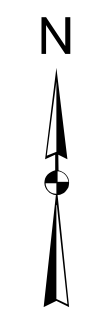
COPIES OF THIS MAP ARE AVAILABLE AT THE PUBLIC INFORMATION CENTER  
 ADDRESS: 4600 BERRY LANE, SUITE 200  
 RALEIGH, NC 27609  
 N.C. DEPARTMENT OF TRANSPORTATION  
 MAPS & MAPPING SECTION  
 (919) 835-8480



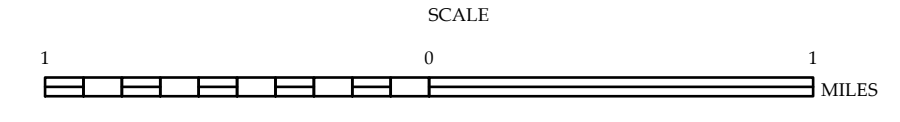
**Stonehenge**  
 0 0.25 0.5  
 MILES



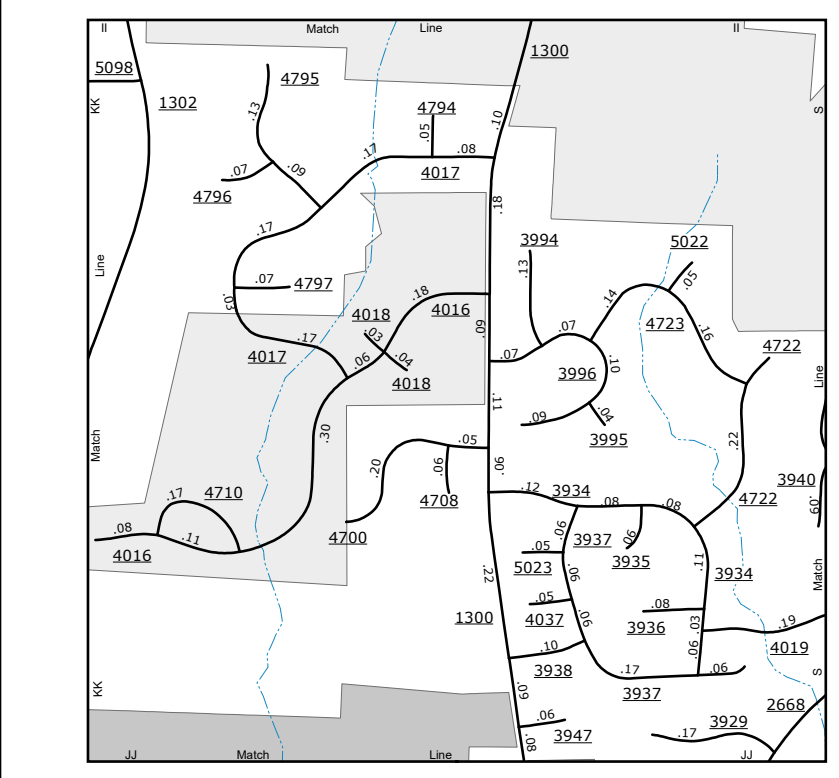
**Mitchell Mill**  
 0 0.25 0.5  
 MILES



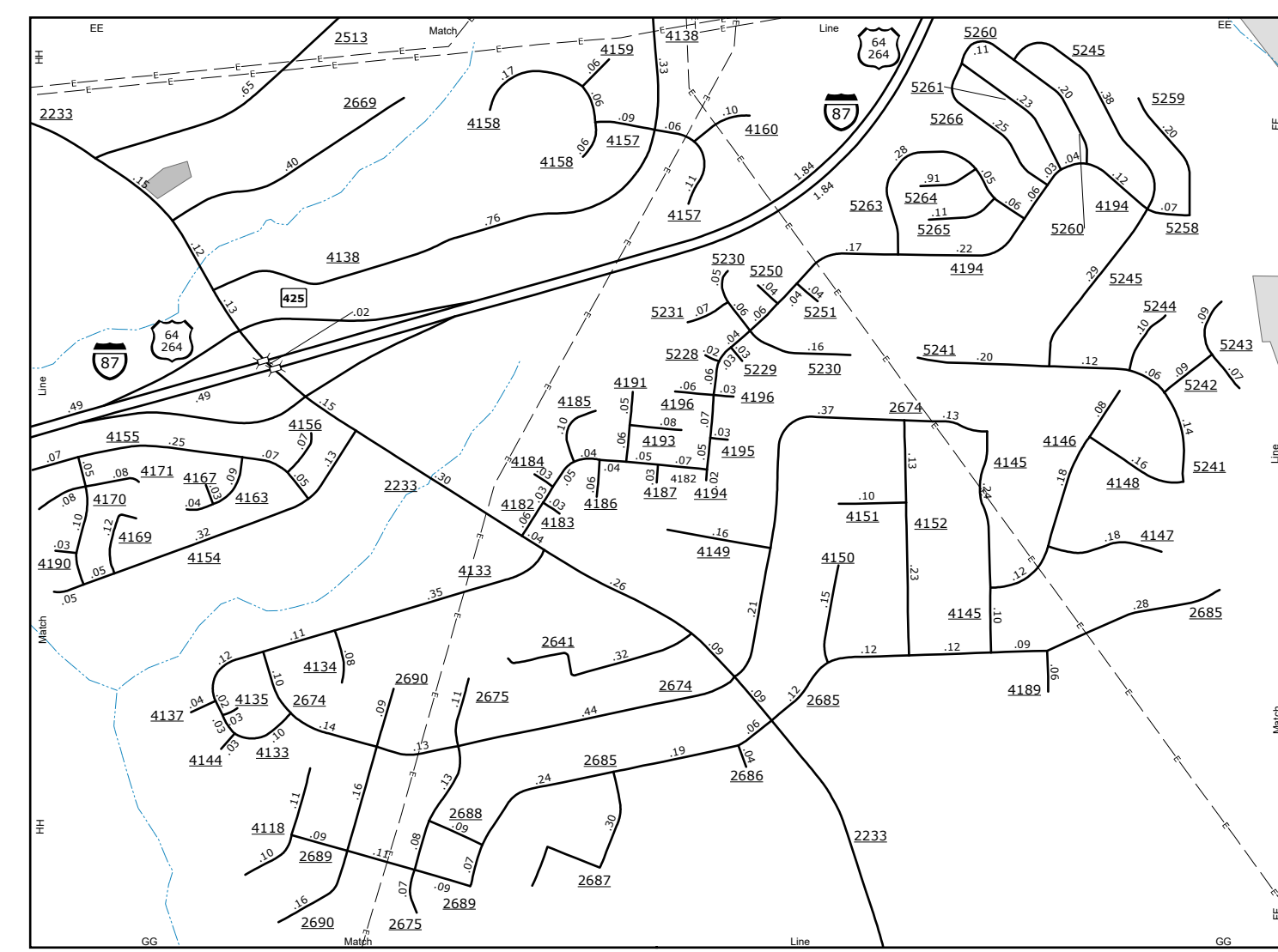
ENLARGED MUNICIPAL AND SUBURBAN AREAS  
**WAKE COUNTY**  
 NORTH CAROLINA  
 PREPARED BY THE  
 NORTH CAROLINA DEPARTMENT OF TRANSPORTATION  
 OPERATIONS PROGRAM MANAGEMENT UNIT - MAPPING SECTION  
 IN COOPERATION WITH THE  
 U.S. DEPARTMENT OF TRANSPORTATION  
 FEDERAL HIGHWAY ADMINISTRATION



10,000 FOOT GRID BASED ON NORTH CAROLINA PLANE COORDINATE SYSTEM  
 LAMBERT CONFORMAL CONIC PROJECTION



**Holly Brook**  
 0 0.25 0.5  
 MILES



**Baywood**  
 0 0.25 0.5  
 MILES