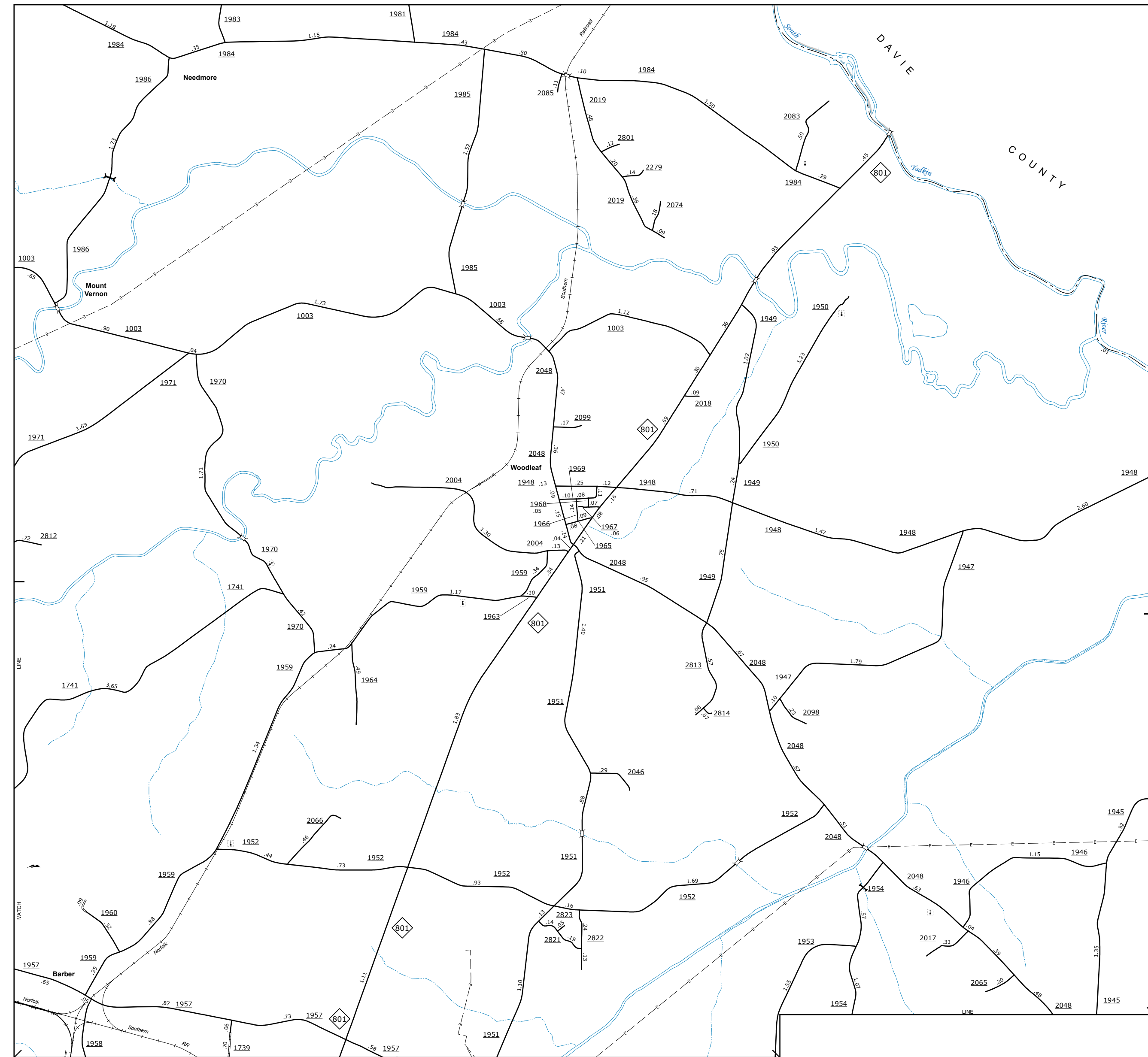
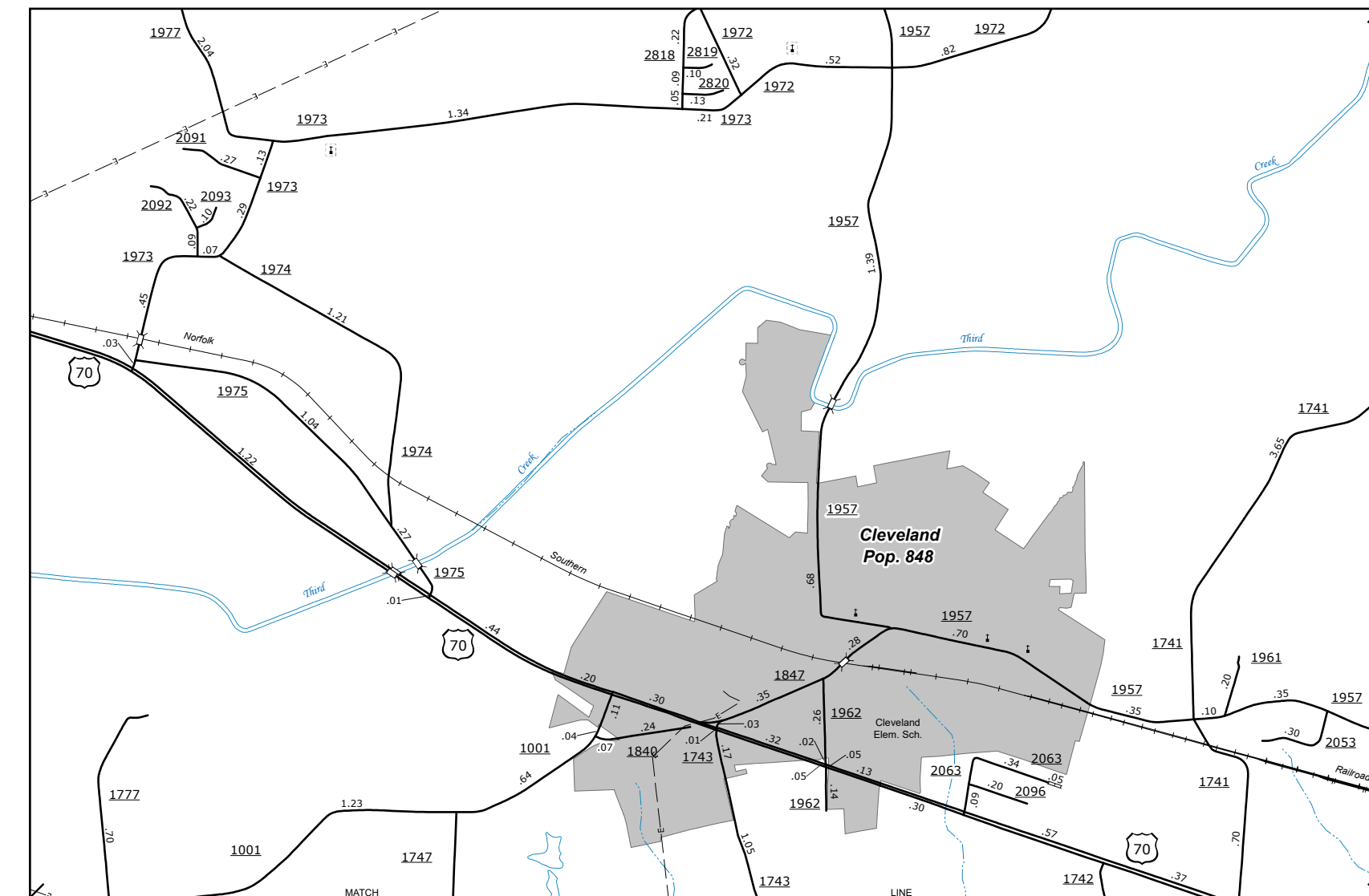


The Mapping Section's goal is to provide the most accurate and current information possible. Map data is compiled from various sources and is subject to change. The accuracy of the data is not guaranteed. The accuracy of the data is dependent on the accuracy of the data provided to the Mapping Section. The Mapping Section is not responsible for any errors or omissions in the data. For more information, please visit our website at <http://www.ncdot.gov/transportation/mapping> and click on Data Providers or contact us by phone at (919) 855-8480.

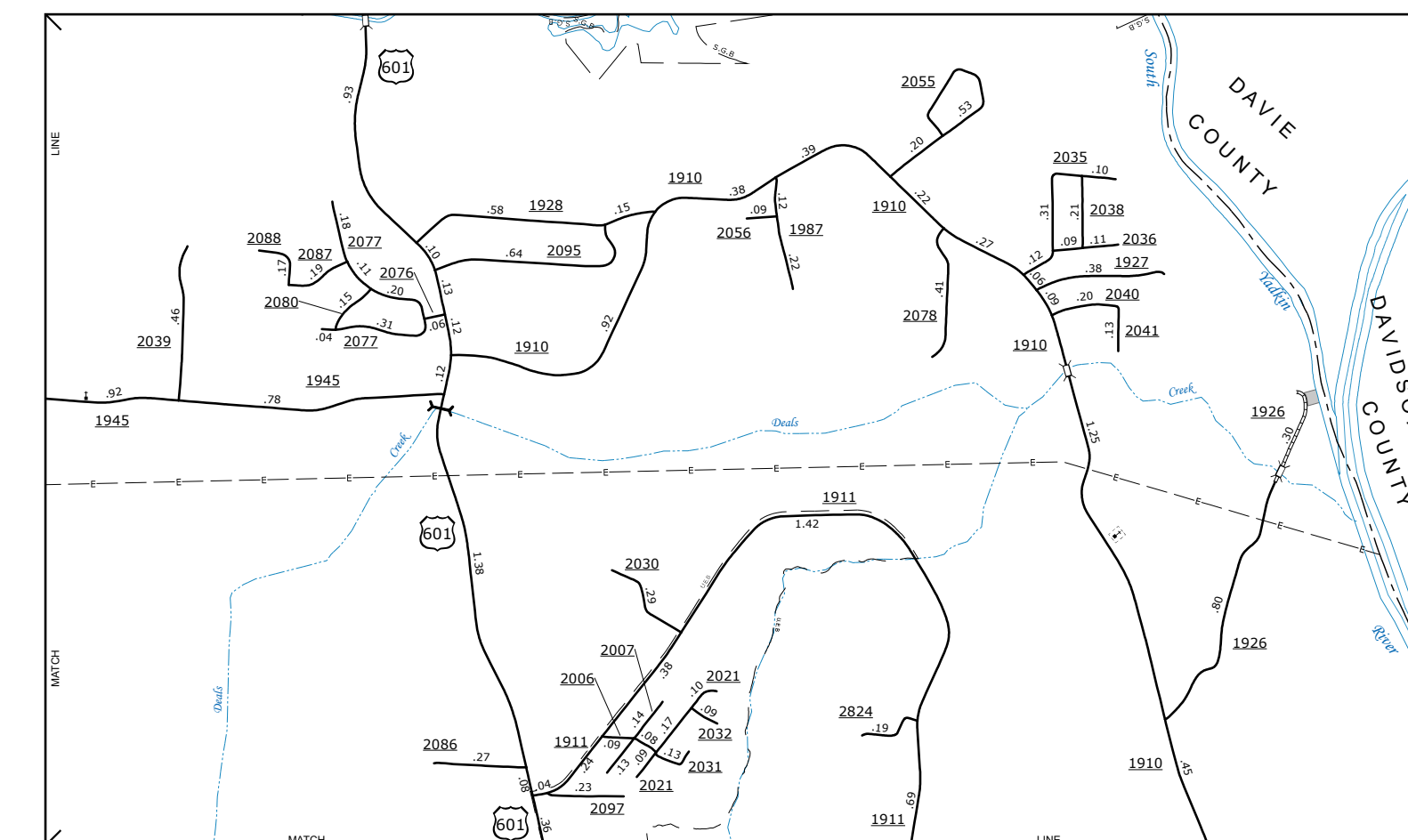
COPIES OF THIS MAP ARE AVAILABLE FOR PURCHASE AT A PUBLIC NOMINAL COST. ADDRESS: N.C. DEPARTMENT OF TRANSPORTATION, MSAU - MAPPING SECTION, 4809 BERRY LANE, RALEIGH, NC 27606



Woodleaf



Cleveland



Mt. Tabor Church Area

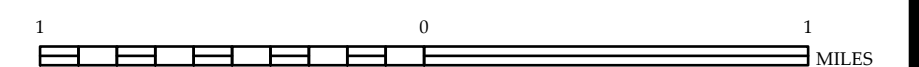


ENLARGED MUNICIPAL AND SUBURBAN AREAS

ROWAN COUNTY NORTH CAROLINA

PREPARED BY THE
NORTH CAROLINA DEPARTMENT OF TRANSPORTATION
OPERATIONS PROGRAM MANAGEMENT UNIT - MAPPING SECTION
IN COOPERATION WITH THE
U.S. DEPARTMENT OF TRANSPORTATION
FEDERAL HIGHWAY ADMINISTRATION

SCALE



10,000 FOOT GRID BASED ON NORTH CAROLINA PLANE COORDINATE SYSTEM
LAMBERT CONFORMAL CONIC PROJECTION