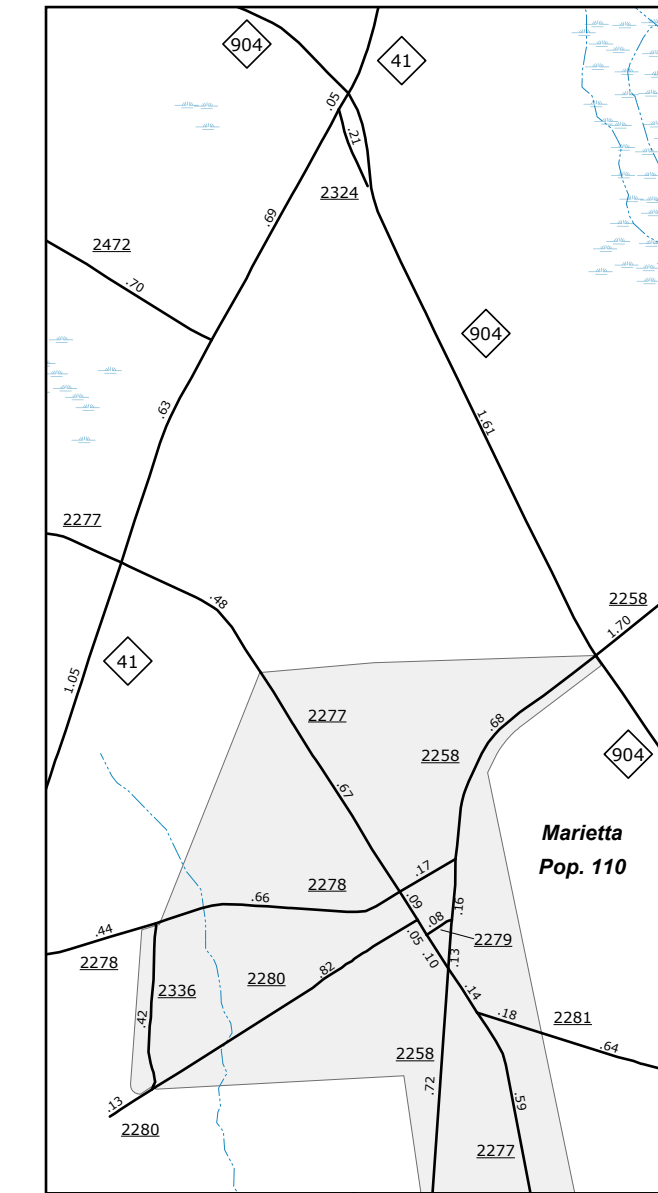
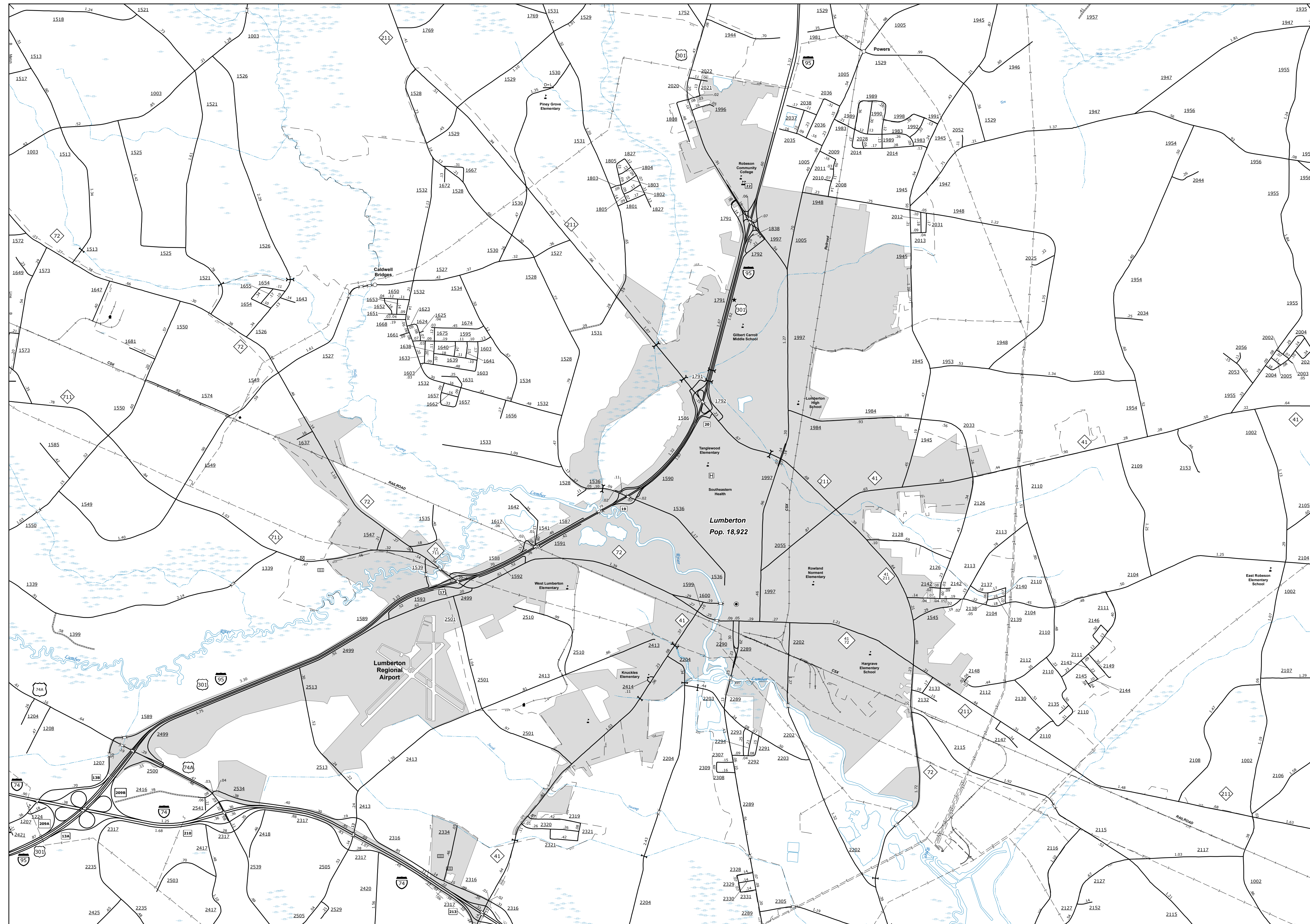
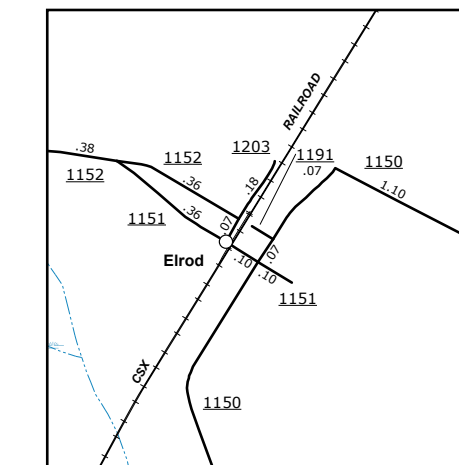


COPIES OF THIS MAP ARE AVAILABLE AT A PUBLIC INFORMATION COST. ADDRESS: N.C. DEPARTMENT OF TRANSPORTATION, MSAU MAPPING SECTION, 689 BERRY LANE, RALEIGH, NC 27606

The Mapping Section's goal is to provide the most accurate and current information possible. Map data is compiled from various sources and is subject to change without notice. The accuracy of the data is not guaranteed. For more information, visit <http://www.ncdot.gov/infomapping>, and click on Data Providers or contact us by phone at (919) 835-6480.



Marietta



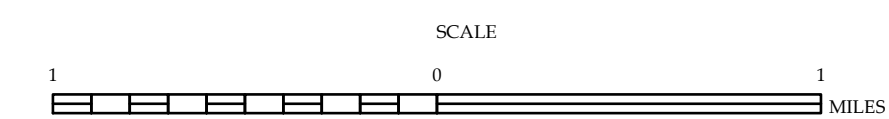
Elrod



Lumberton

ENLARGED MUNICIPAL AND SUBURBAN AREAS
ROBESON COUNTY
 NORTH CAROLINA

PREPARED BY THE
 NORTH CAROLINA DEPARTMENT OF TRANSPORTATION
 OPERATIONS PROGRAM MANAGEMENT UNIT - MAPPING SECTION
 IN COOPERATION WITH THE
 U.S. DEPARTMENT OF TRANSPORTATION
 FEDERAL HIGHWAY ADMINISTRATION



10,000 FOOT GRID BASED ON NORTH CAROLINA PLANE COORDINATE SYSTEM
 LAMBERT CONFORMAL CONIC PROJECTION