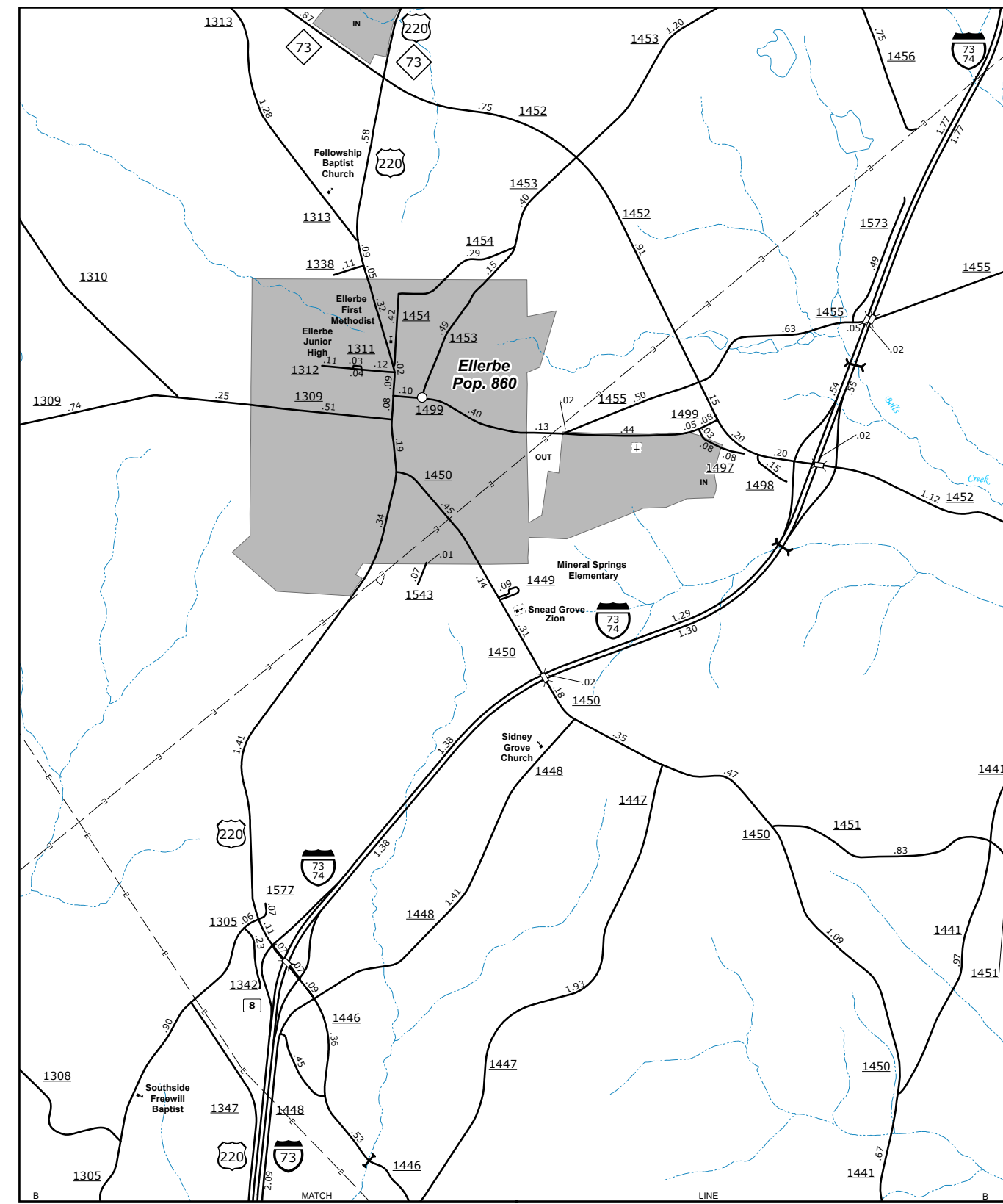
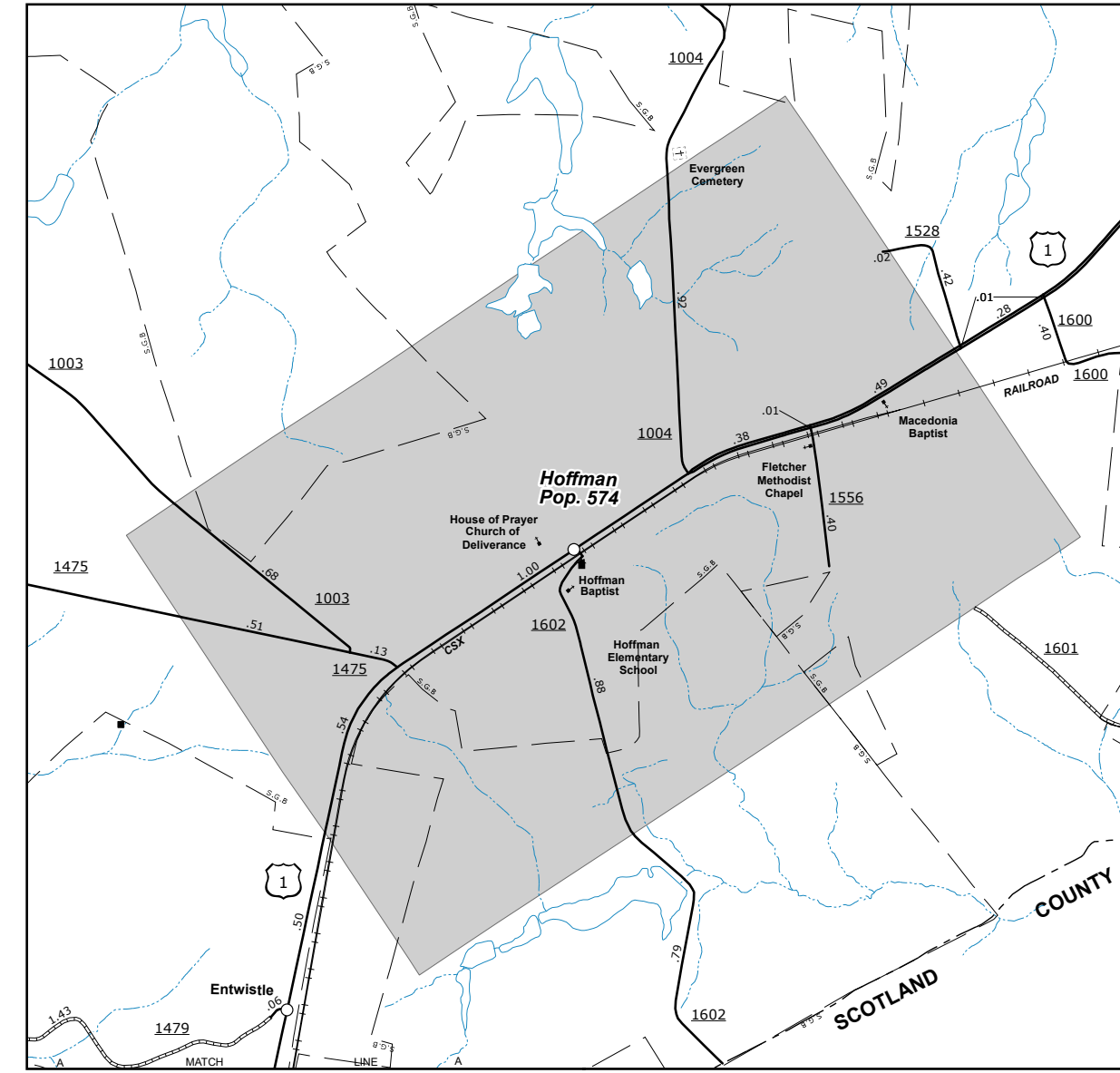


The Mapping Section's goal is to provide the most accurate and current information possible. Map data is compiled from various sources and is subject to change. The accuracy of the data is not guaranteed. The accuracy of the data is dependent on the accuracy of the source data. The accuracy of the data is dependent on the accuracy of the source data. The accuracy of the data is dependent on the accuracy of the source data.

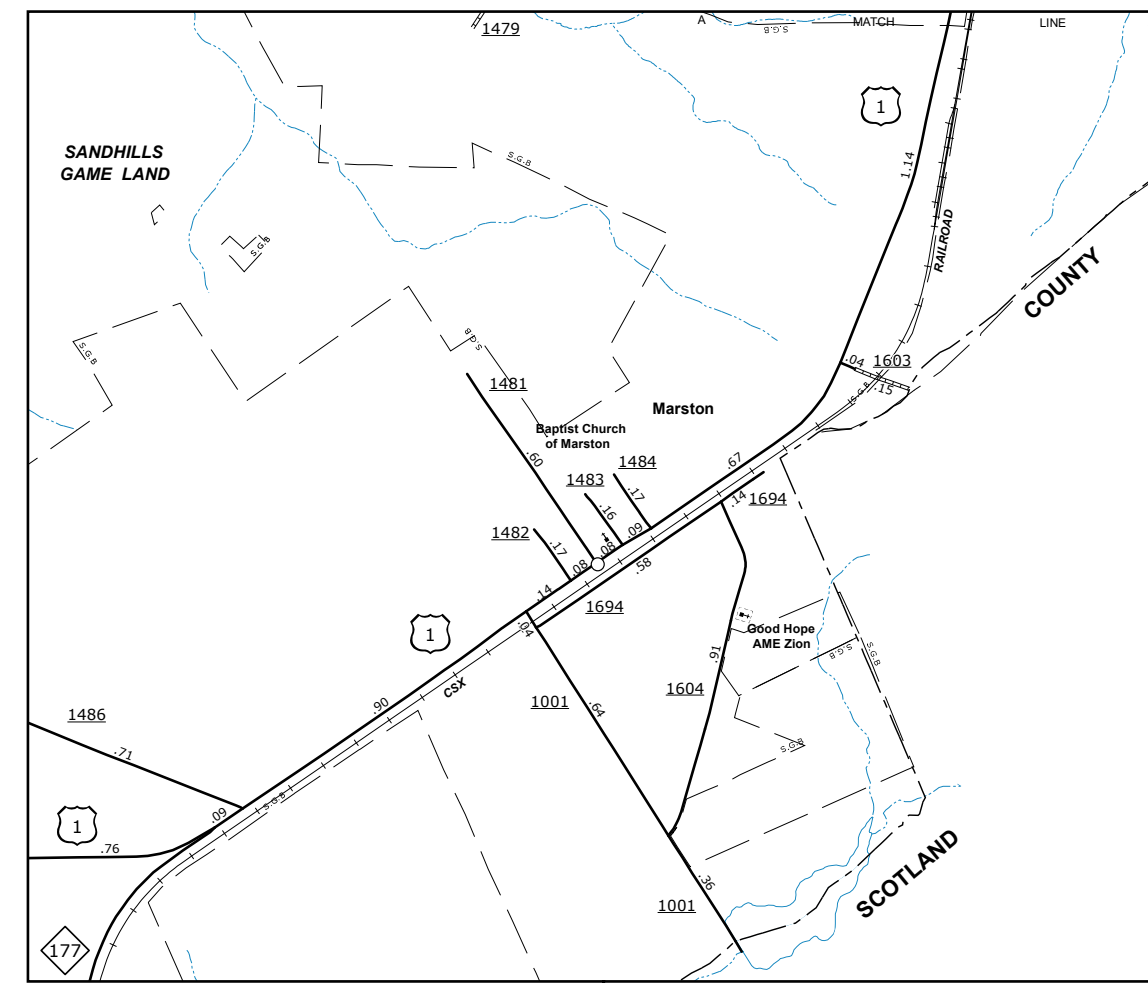
COPIES OF THIS MAP ARE AVAILABLE FROM THE NORTH CAROLINA DEPARTMENT OF TRANSPORTATION ADDRESS: 800 BERNLIE DRIVE, RALEIGH, NC 27603



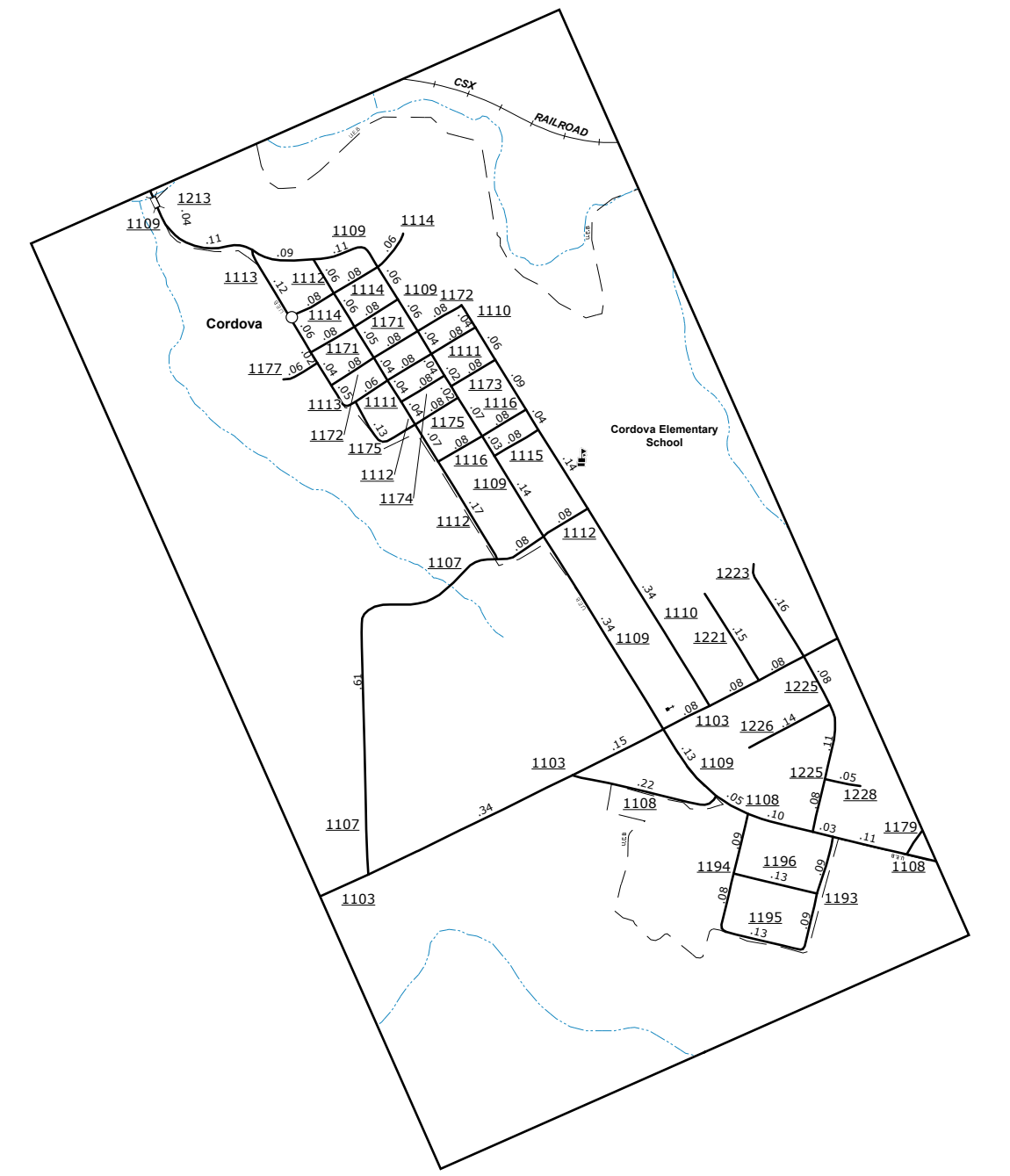
Ellerbe



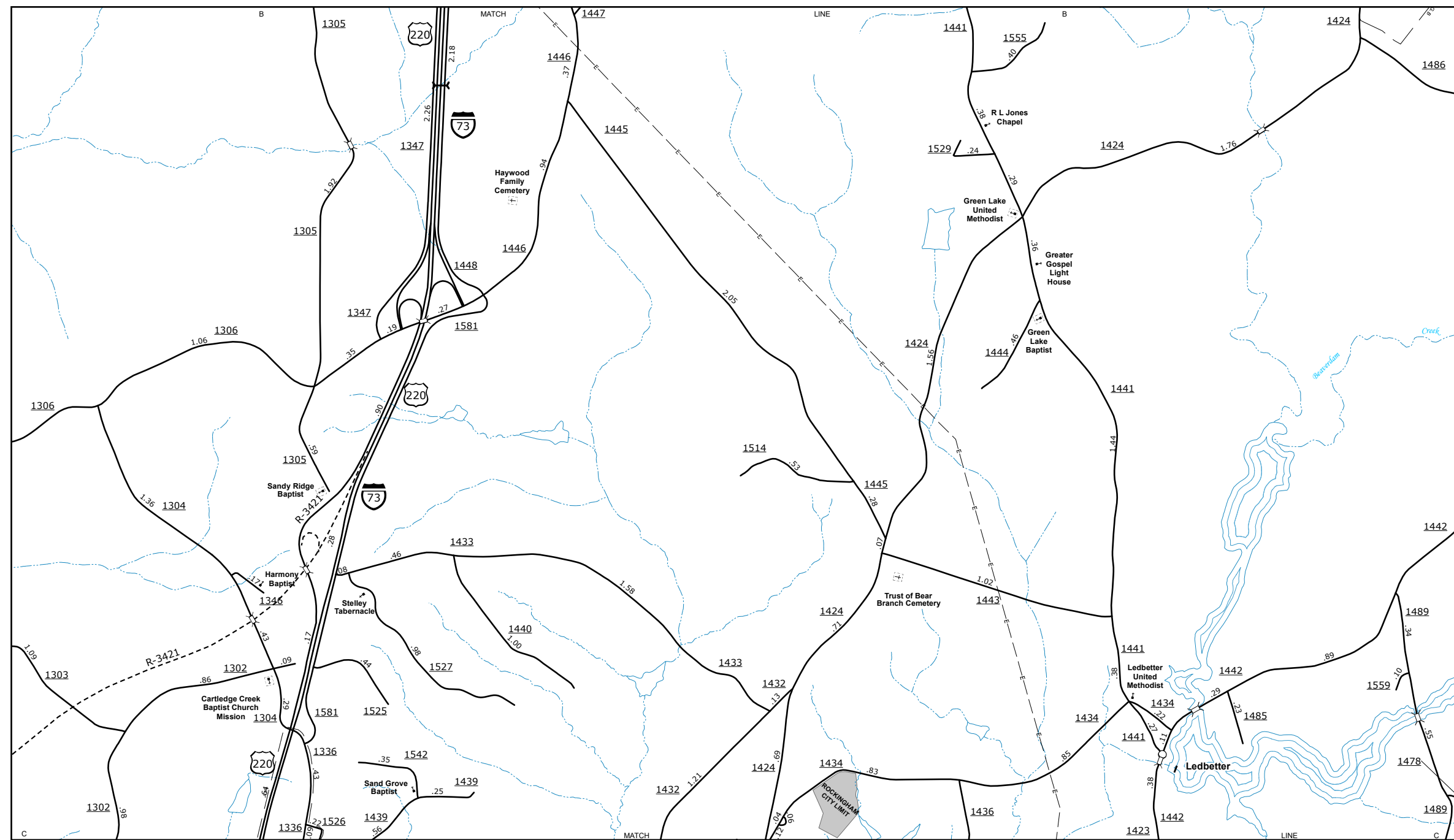
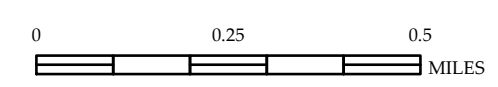
Hoffman



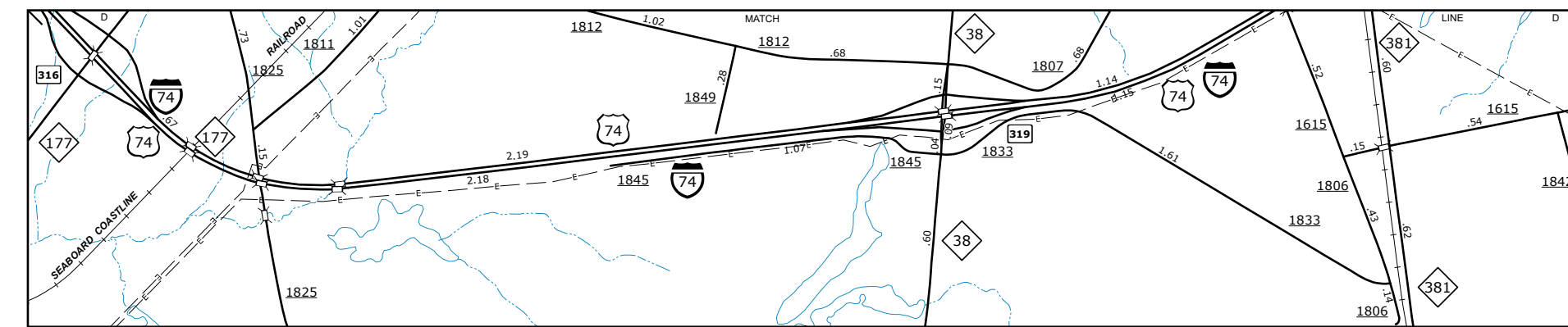
Marston



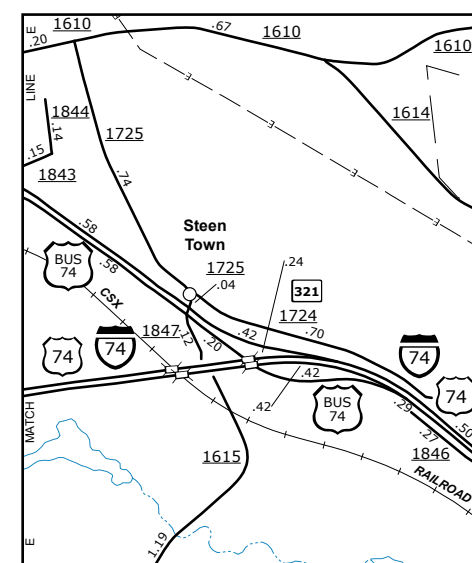
Cordova



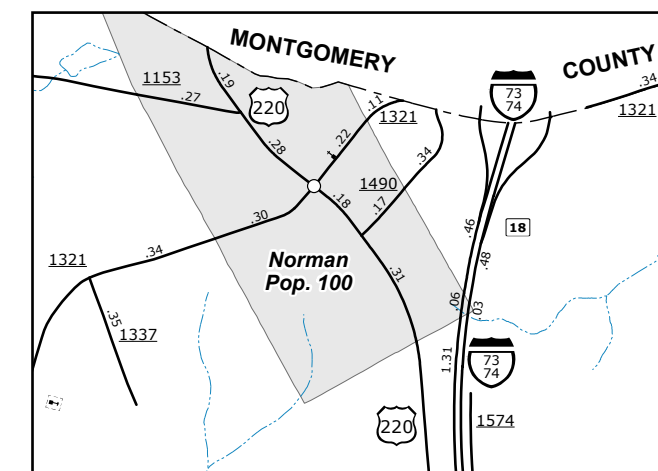
Ledbetter and Vicinity



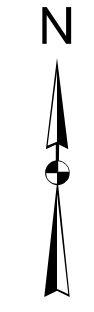
Southern Hamlet Area



I-74 BYP/BUS

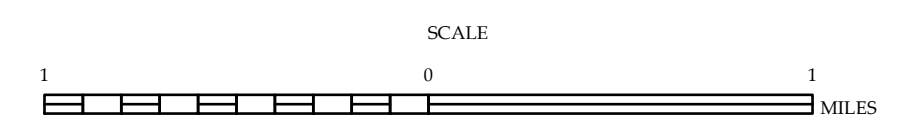


Norman



ENLARGED MUNICIPAL AND SUBURBAN AREAS  
**RICHMOND COUNTY**  
NORTH CAROLINA

PREPARED BY THE  
NORTH CAROLINA DEPARTMENT OF TRANSPORTATION  
OPERATIONS PROGRAM MANAGEMENT UNIT - MAPPING SECTION  
IN COOPERATION WITH THE  
U.S. DEPARTMENT OF TRANSPORTATION  
FEDERAL HIGHWAY ADMINISTRATION



10,000 FOOT GRID BASED ON NORTH CAROLINA PLANE COORDINATE SYSTEM  
LAMBERT CONFORMAL CONIC PROJECTION