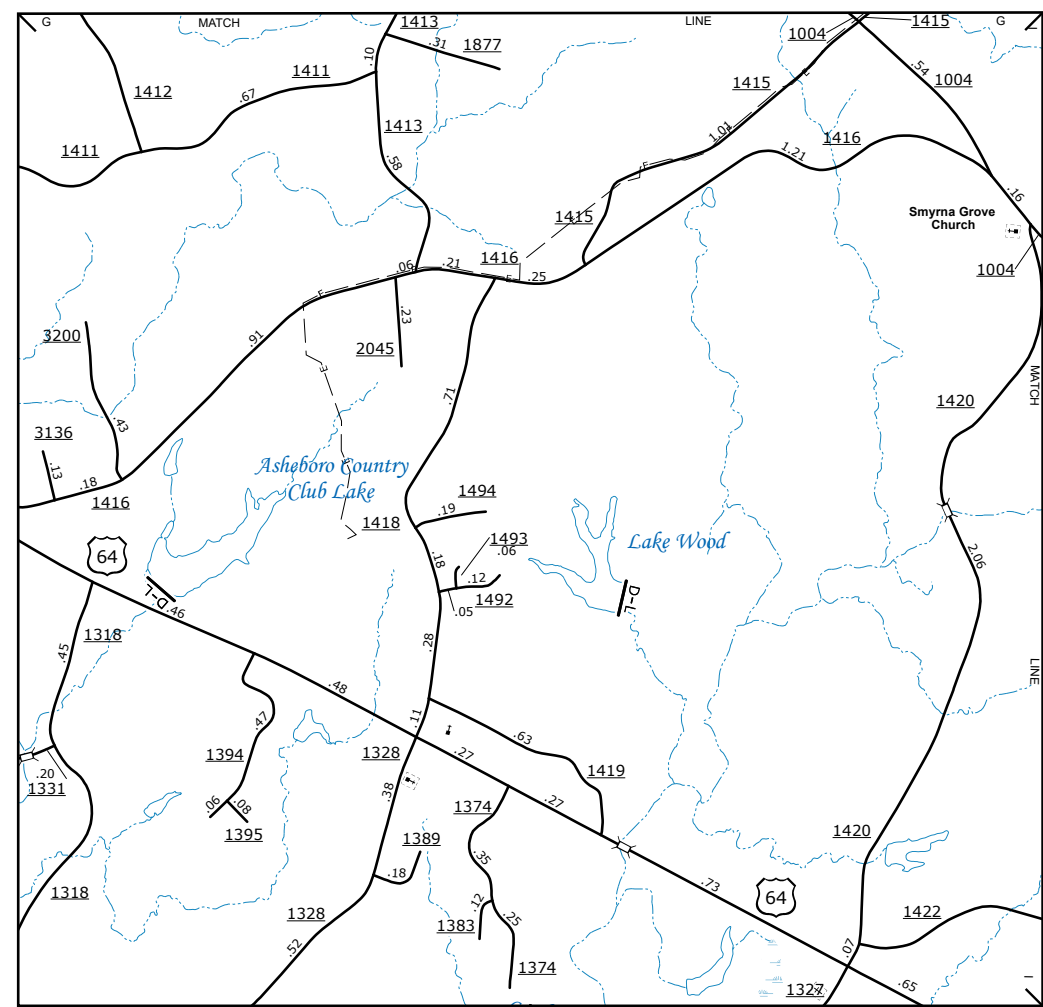
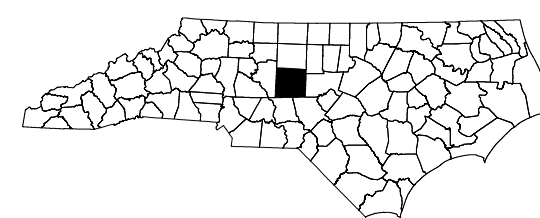
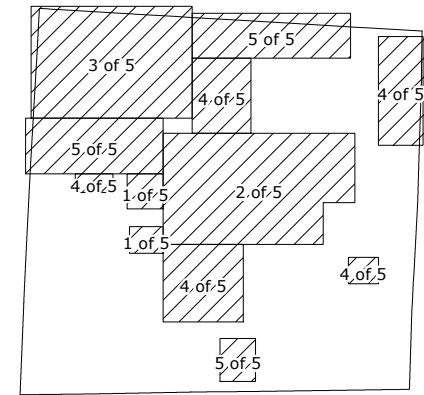
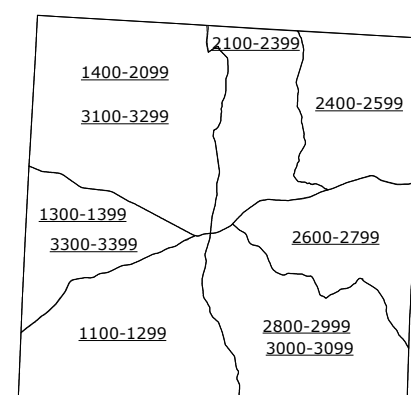


West Asheboro Area

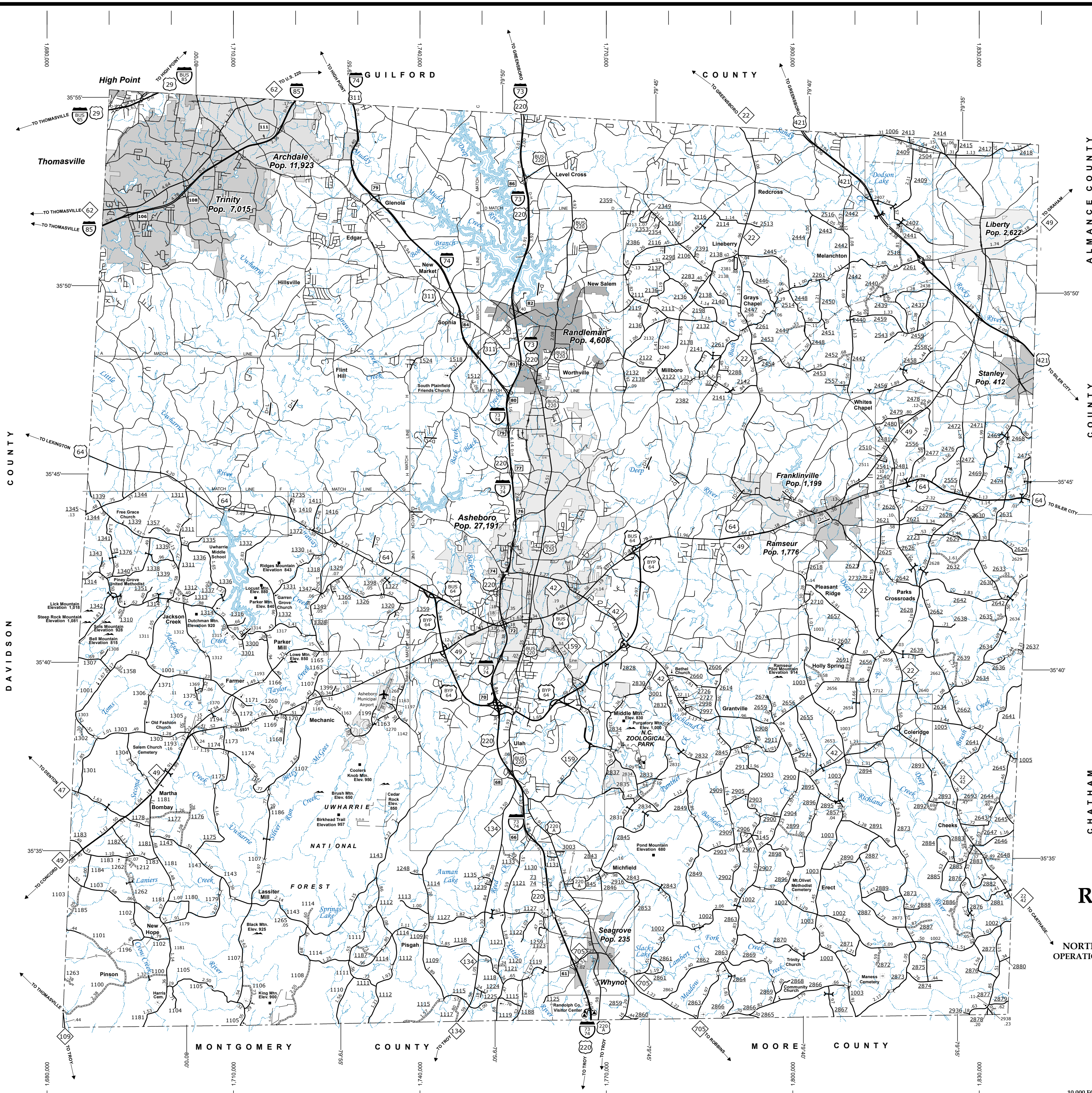


Inset 1



The Mapping Section's goal is to provide the most accurate and current information possible. Map data is compiled from various sources including aerial photography, ground surveys, and other data. The data is processed and loaded into the GIS system. The GIS system is a computerized system that stores and retrieves data. The GIS system is used to create maps and other geographic information. The GIS system is a powerful tool for mapping and geographic information. The GIS system is used to create maps and other geographic information. The GIS system is a powerful tool for mapping and geographic information.

COPIES OF THIS MAP ARE AVAILABLE FROM THE NORTH CAROLINA DEPARTMENT OF TRANSPORTATION ADDRESS: 4609 BERTHOLD DRIVE, RALEIGH, NC 27617

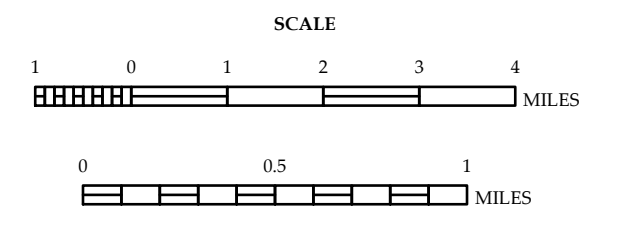


- LEGEND**
- UNPAVED SURFACED ROAD
 - HARD SURFACED ROAD
 - TRANS-STATE ROADS
 - DIVIDED HIGHWAY WITH FRONTAGE ROADS
 - PROPOSED LOCATION
 - RULE BRIDGE PARKWAY
 - INTERSECTION DISTANCE
 - TRAFFIC CIRCLE
 - DETAILED HIGHWAY INTERCHANGE
 - HIGHWAY BRIDGE
 - RAILROAD BRIDGE
 - DRAW SPAN ON BRIDGE
 - PEDESTRIAN WALKWAY
 - PEDESTRIAN UNDERPASS
 - VEHICULAR UNDERPASS
 - FORD
 - TUNNEL
 - CULVERT
 - PIPE
 - INTERSTATE HIGHWAY
 - U.S. NUMBERED HIGHWAY
 - N.C. NUMBERED HIGHWAY
 - U.S. NUMBERED BI-CYCLE ROUTE
 - N.C. NUMBERED BI-CYCLE ROUTE
 - INTERSTATE INTERCHANGE NUMBER
 - SECONDARY ROAD NUMBER
 - UTILITY LINES
 - RAILROAD
 - RAILROAD STATION
 - GRADE CROSSING
 - INSET AREA
 - NATIONAL FOREST BOUNDARY
 - RESERVATION OR PARK BOUNDARY
 - STATE FOREST BOUNDARY
 - STATE GAMELAND BOUNDARY
 - FEDERAL GAMELAND BOUNDARY
 - MILITARY RESERVATION BOUNDARY
 - STATE LINE
 - COUNTY LINE
 - CITY LIMIT
 - FERRY ROUTE
 - NARROW CREEK OR STREAM
 - WIDE RIVER OR CREEK
 - RESERVOIR, POND OR LAKE W/ ISLAND
 - DAM OR DAM WITH LOCK
 - WATERFALL
 - SWAMP
 - COMMUNITY, TOWN OR CITY CENTER
 - COUNTY SEAT
 - STATE CAPITAL
 - SCHOOL
 - COLLEGE OR UNIVERSITY
 - HOSPITAL
 - COAST GUARD STATION
 - CHURCH
 - CHURCH WITH CEMETERY
 - CEMETERY
 - PATROL STATION
 - CORRECTION OR PENAL INSTITUTION
 - QUARRY
 - MINE OR PIT
 - HEAVY GARAGE OR MAINT. YARD
 - HIGHWAY DIV. OR DIST. OFFICE
 - MILITARY POST
 - WILDLIFE REFUGE
 - WEIGH STATION
 - FAIRGROUNDS
 - HISTORICAL SITE
 - POINTS OF INTEREST
 - STATE FOREST
 - LIGHTHOUSE
 - MOUNTAIN SUMMIT
 - OVERLOOK
 - GEORETIC MARKER
 - REST AREA
 - VISITOR CTR/REST AREA
 - WELCOME CTR/REST AREA
 - AIRPORT
 - MILITARY AIRPORT
 - HELIPORT



RANDOLPH COUNTY NORTH CAROLINA

PREPARED BY THE
NORTH CAROLINA DEPARTMENT OF TRANSPORTATION
OPERATIONS PROGRAM MANAGEMENT UNIT - MAPPING SECTION
IN COOPERATION WITH THE
U.S. DEPARTMENT OF TRANSPORTATION
FEDERAL HIGHWAY ADMINISTRATION



SCALE FOR ENLARGEMENTS
10,000 FOOT GRID BASED ON NORTH CAROLINA PLANE COORDINATE SYSTEM
LAMBERT CONFORMAL CONIC PROJECTION