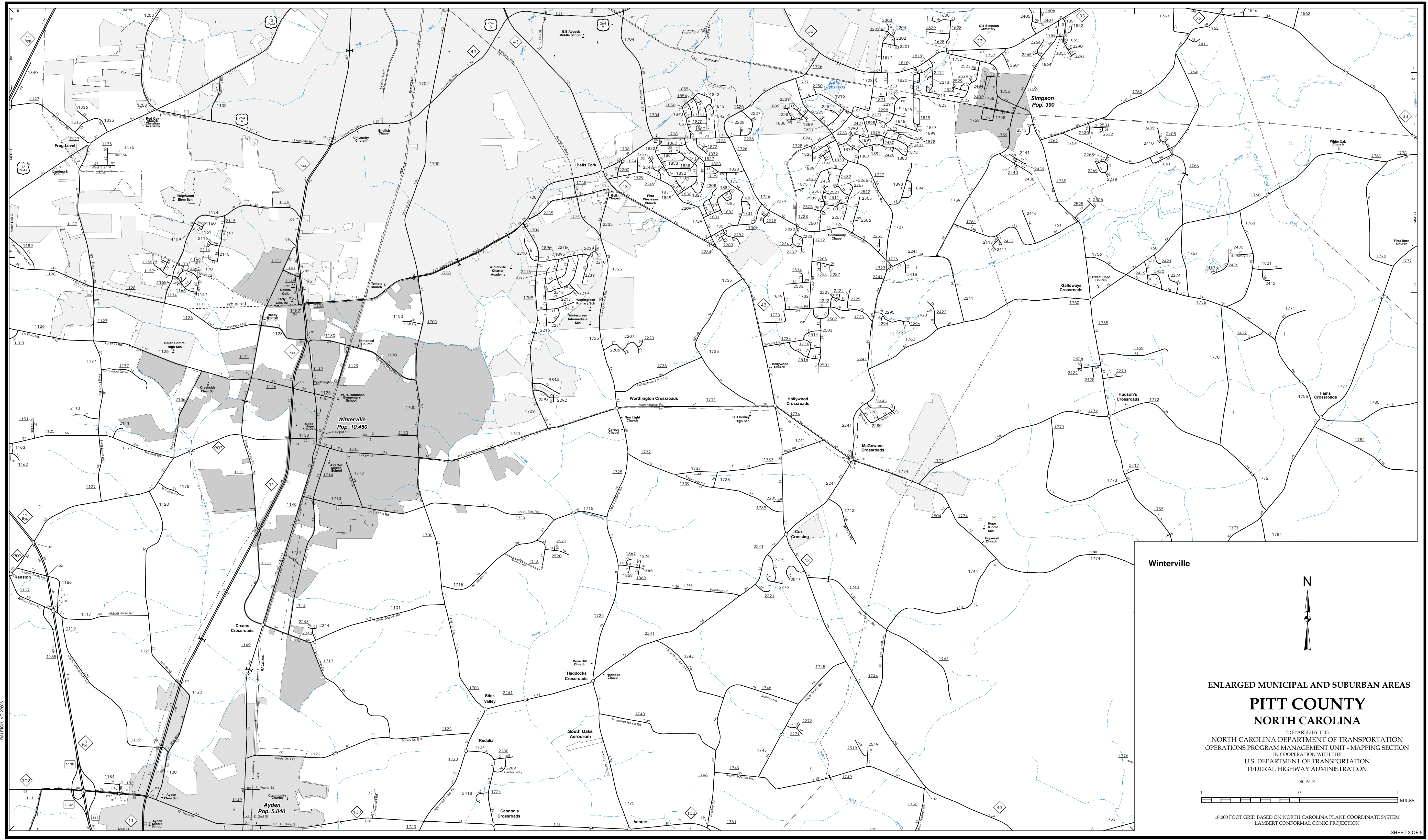


The Mapping Section's goal is to provide the most accurate and current information possible. Map data is compiled from various sources including aerial photography, GIS data, and other public information. The information is subject to change without notice. The information is provided as a service to the public and is not intended to be used for legal purposes. For more information, please contact the Mapping Section at (919) 855-8480.

COPIES OF THIS MAP ARE AVAILABLE AT THE PUBLIC INFORMATION CENTER, 400 BERRY, C.D., RALEIGH, NC 27603. FOR ADDITIONAL INFORMATION, VISIT www.ncdot.gov/transportation/mau/mapping/section AND CALL AT (919) 855-8480.



Winterville



ENLARGED MUNICIPAL AND SUBURBAN AREAS

PITT COUNTY NORTH CAROLINA

PREPARED BY THE
NORTH CAROLINA DEPARTMENT OF TRANSPORTATION
OPERATIONS PROGRAM MANAGEMENT UNIT - MAPPING SECTION
IN COOPERATION WITH THE
U.S. DEPARTMENT OF TRANSPORTATION
FEDERAL HIGHWAY ADMINISTRATION

SCALE



10,000 FOOT GRID BASED ON NORTH CAROLINA PLANE COORDINATE SYSTEM
LAMBERT CONFORMAL CONIC PROJECTION