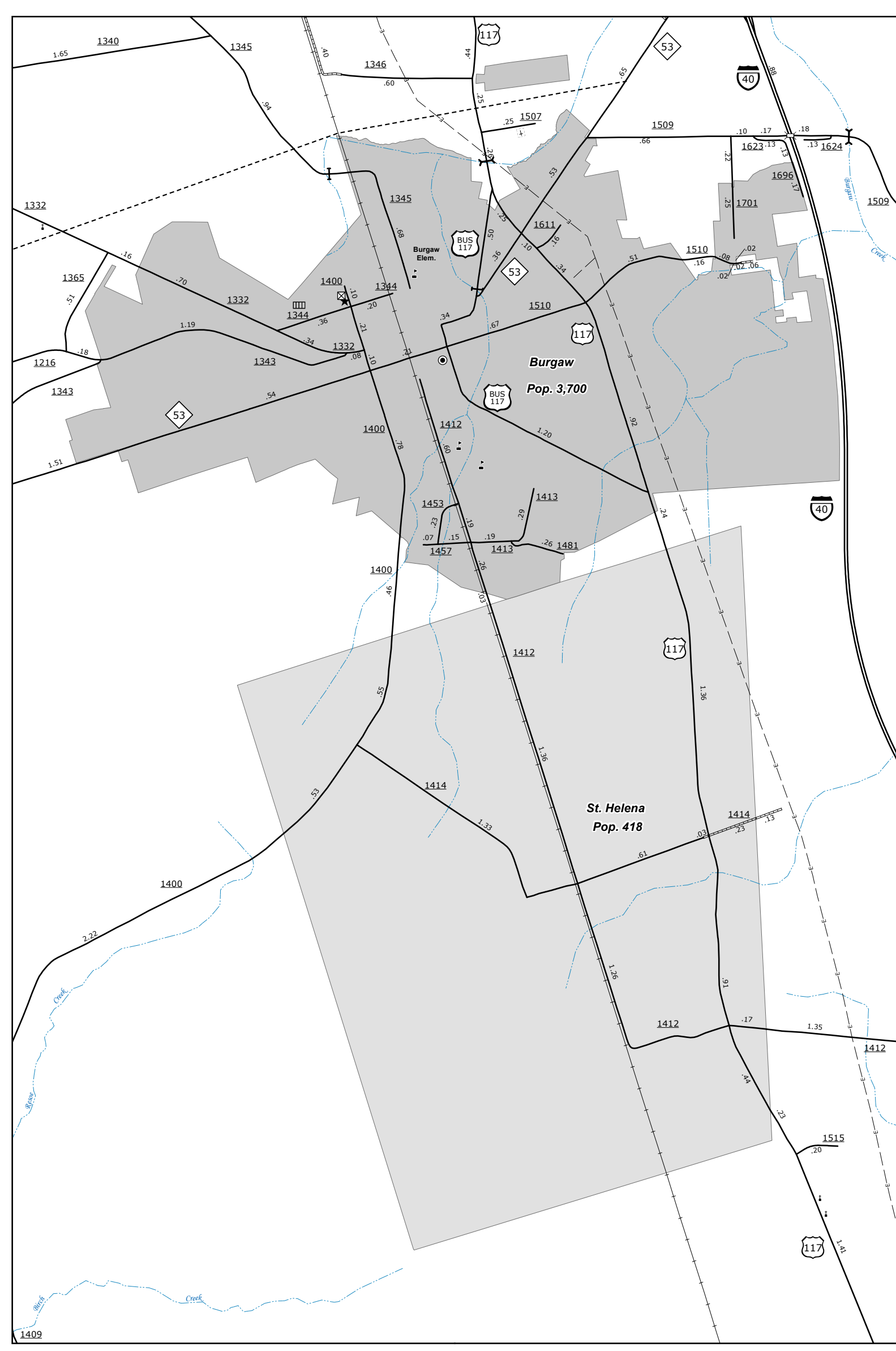
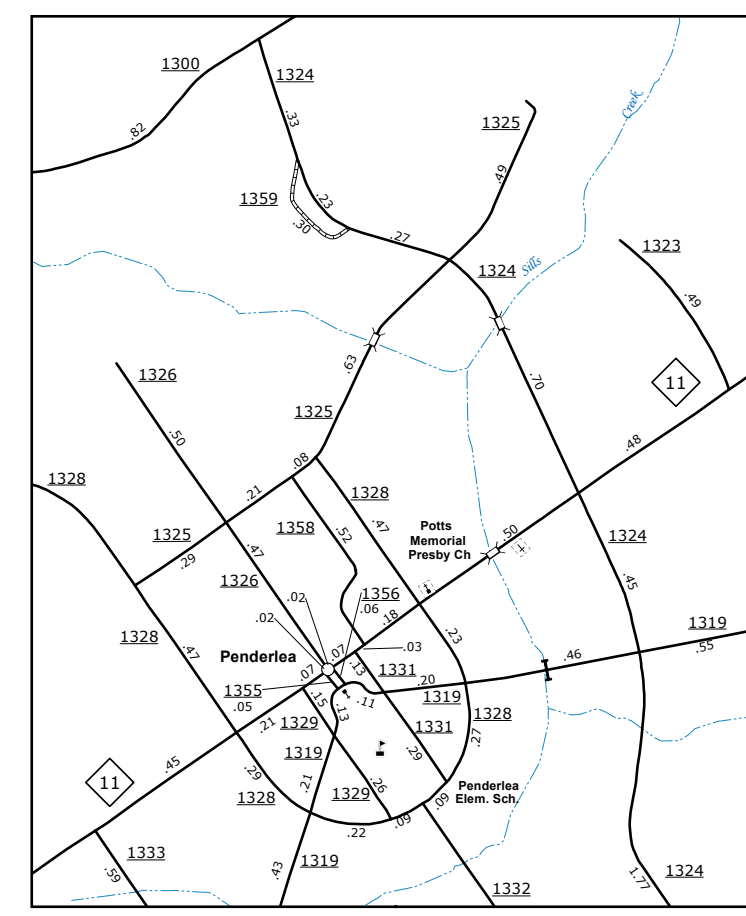


The Mapping Section's goal is to provide the most accurate and current information possible. Map data is compiled from various sources and is subject to change. The information on this map is for general informational purposes only and is not intended to be used for legal purposes. The information on this map is not a warranty, representation, or agreement of any kind. For additional information, visit <http://www.ncdot.gov/transportation/operations/ops/ops.htm> and click on Data Providers or contact us by phone at (919) 855-8480.

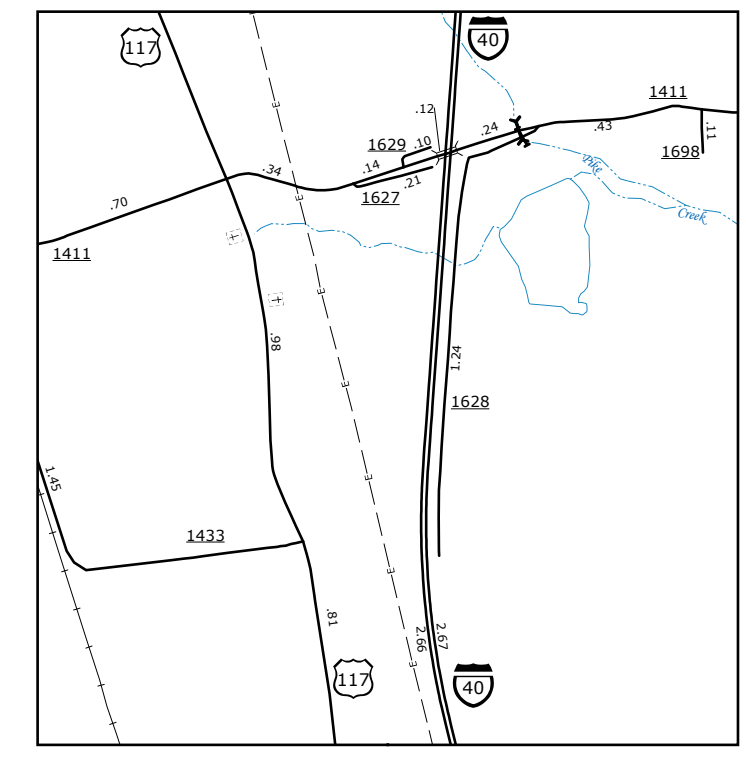
COPIES OF THIS MAP ARE AVAILABLE FOR PURCHASE AT A PUBLIC NOTIONAL COST. ADDRESS: N.C. DEPARTMENT OF TRANSPORTATION, MSAU-MAPPING SECTION, 600 BERNI, CO., RALEIGH, NC 27605



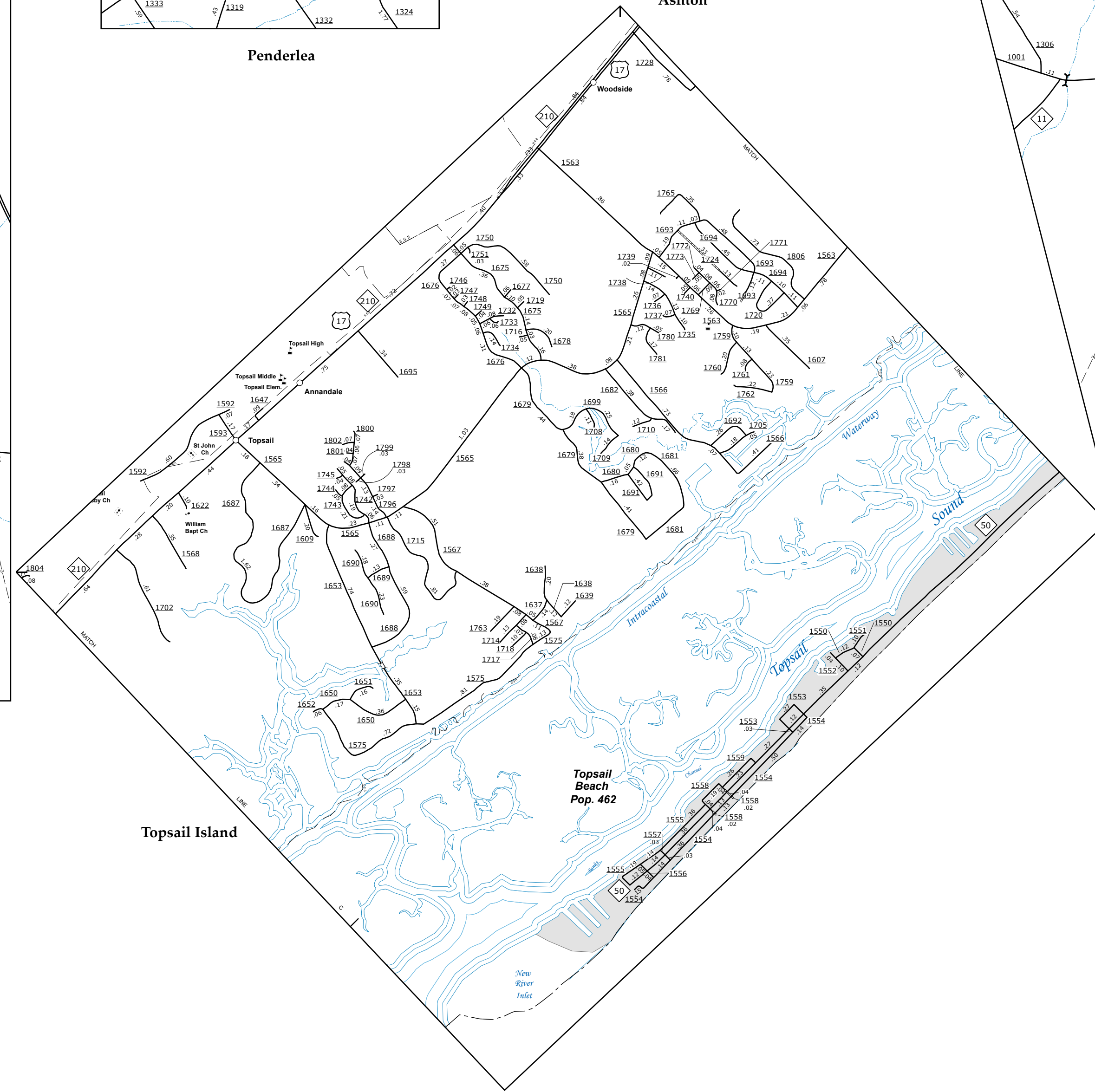
Burgaw



Penderlea

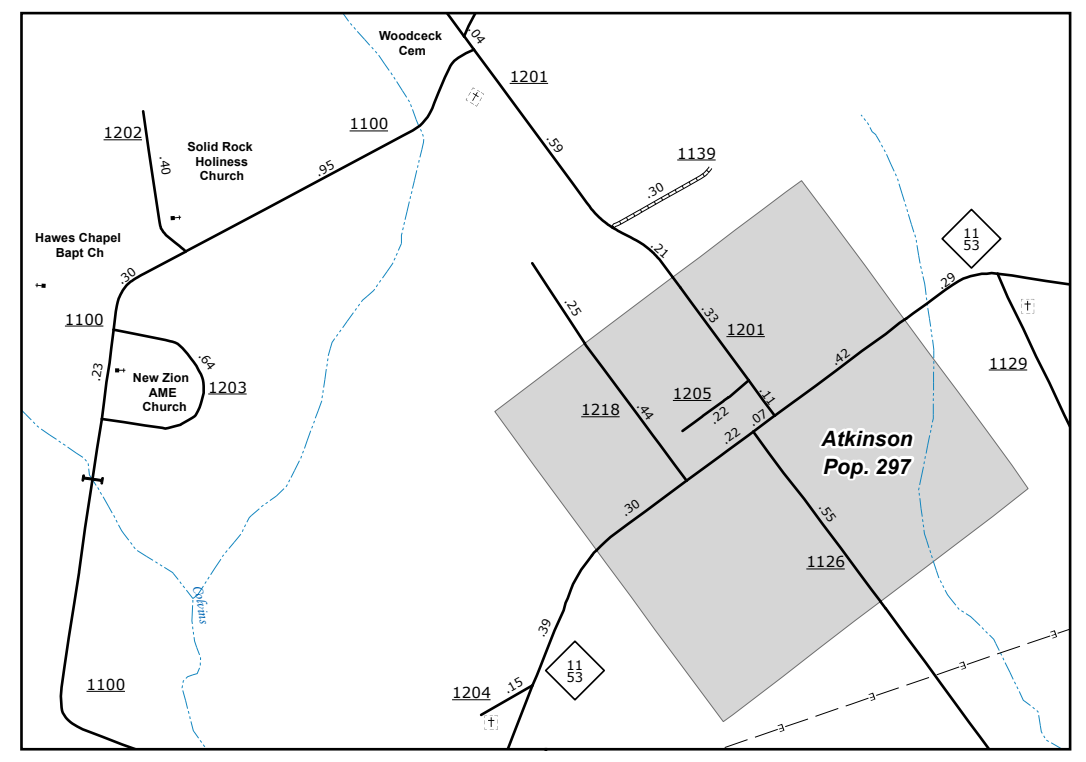


Ashton

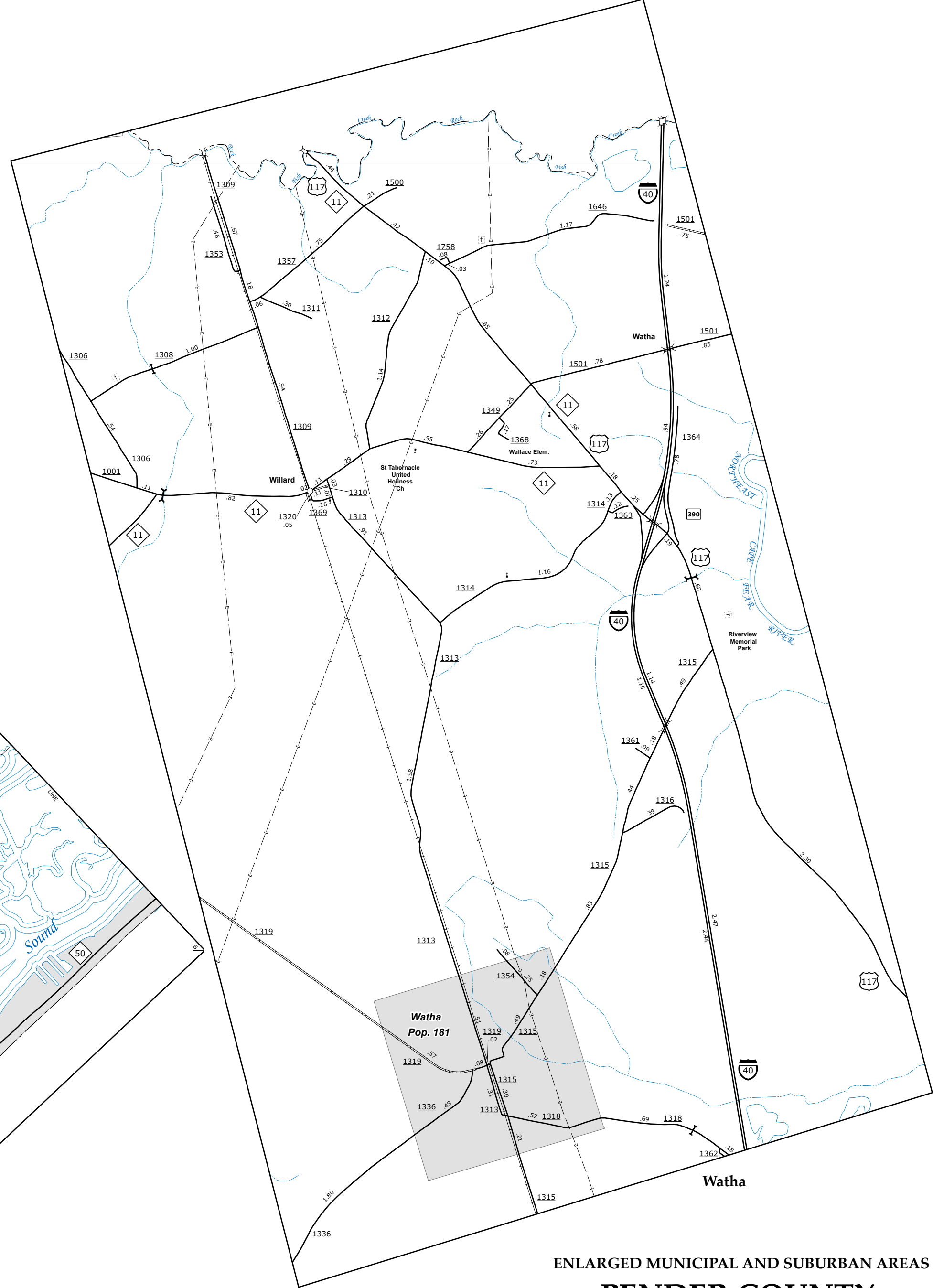


Topsail Island

Topsail Beach
Pop. 462



Atkinson

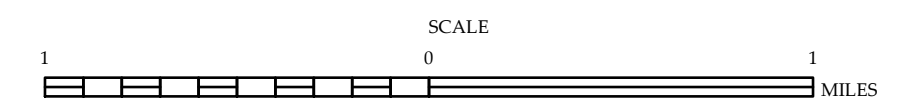
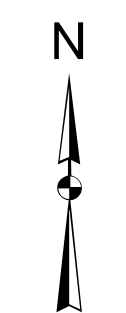


Watha
Pop. 181

Watha

ENLARGED MUNICIPAL AND SUBURBAN AREAS
PENDER COUNTY
NORTH CAROLINA

PREPARED BY THE
NORTH CAROLINA DEPARTMENT OF TRANSPORTATION
OPERATIONS PROGRAM MANAGEMENT UNIT - MAPPING SECTION
IN COOPERATION WITH THE
U.S. DEPARTMENT OF TRANSPORTATION
FEDERAL HIGHWAY ADMINISTRATION



10,000 FOOT GRID BASED ON NORTH CAROLINA PLANE COORDINATE SYSTEM
LAMBERT CONFORMAL CONIC PROJECTION