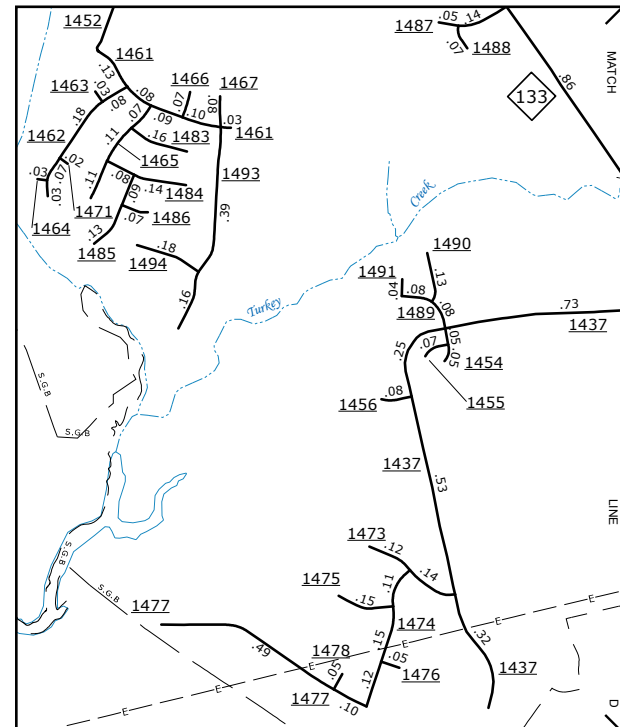
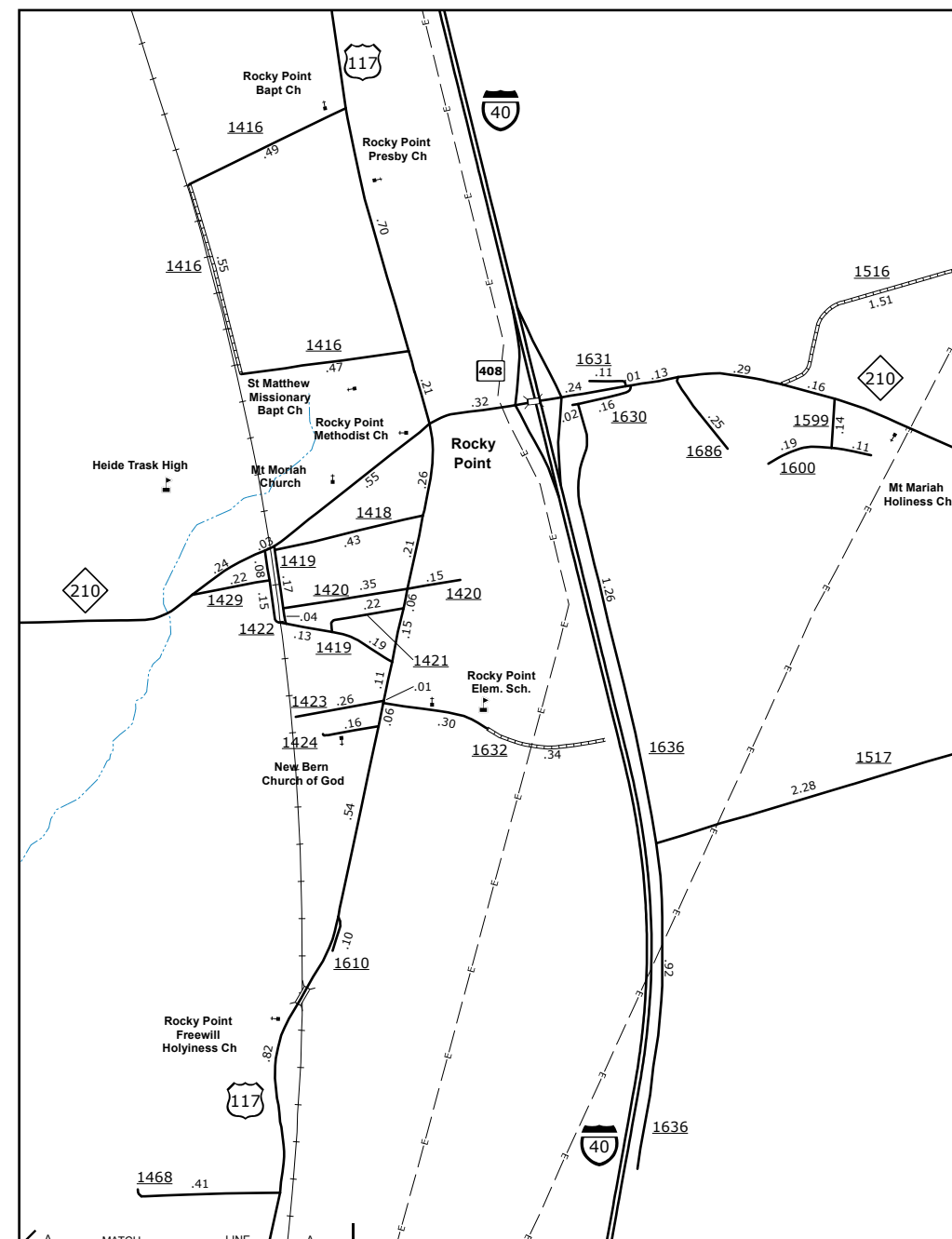


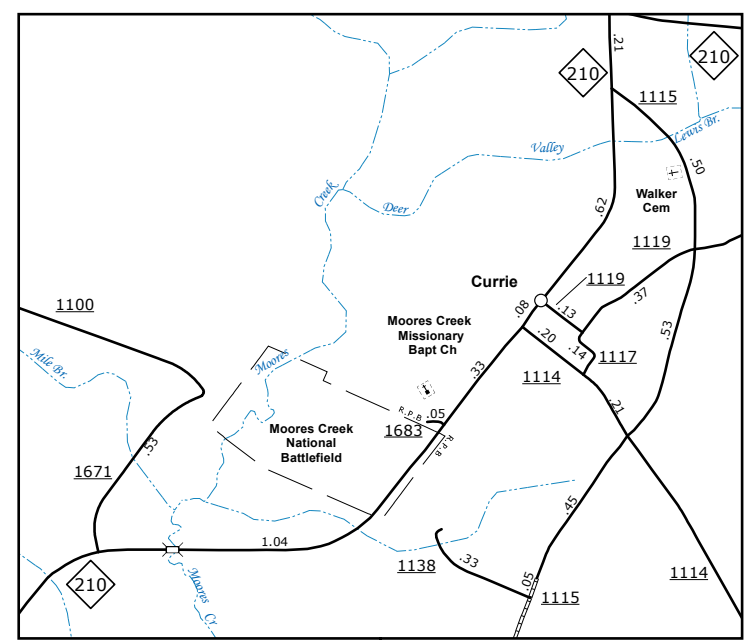
Marlboro



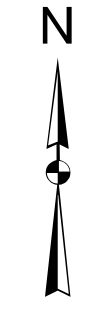
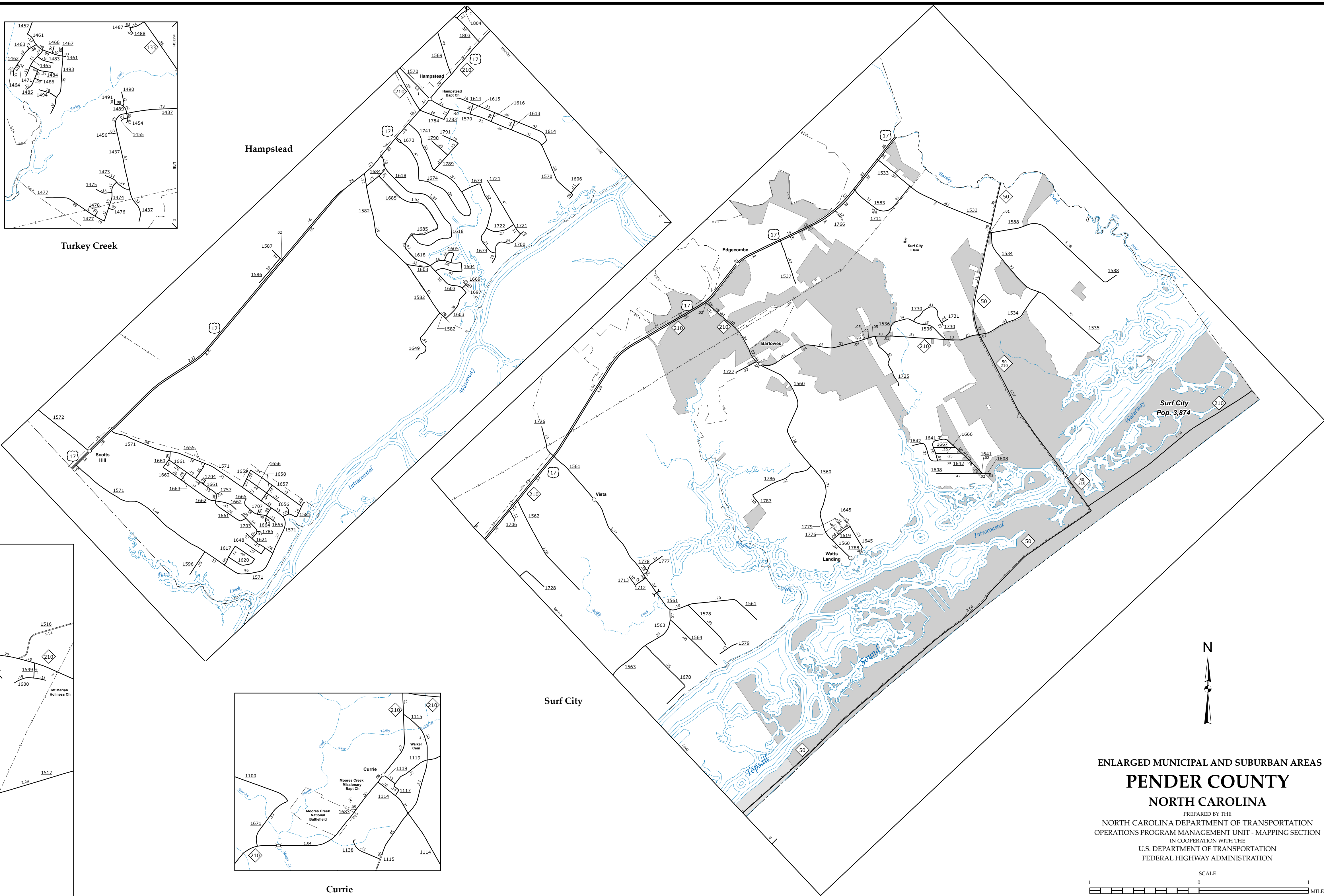
Turkey Creek



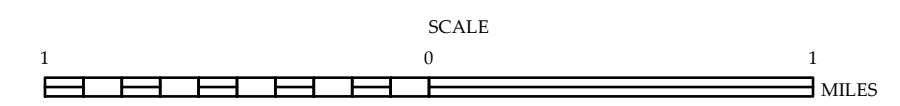
Rocky Point



Currie



ENLARGED MUNICIPAL AND SUBURBAN AREAS
PENDER COUNTY
 NORTH CAROLINA
 PREPARED BY THE
 NORTH CAROLINA DEPARTMENT OF TRANSPORTATION
 OPERATIONS PROGRAM MANAGEMENT UNIT - MAPPING SECTION
 IN COOPERATION WITH THE
 U.S. DEPARTMENT OF TRANSPORTATION
 FEDERAL HIGHWAY ADMINISTRATION



10,000 FOOT GRID BASED ON NORTH CAROLINA PLANE COORDINATE SYSTEM
 LAMBERT CONFORMAL CONIC PROJECTION

The Mapping Section's goal is to provide the most accurate and current information possible. Map data is compiled from various sources including aerial photography, ground surveys, and other reliable sources. The information is subject to change without notice. For more information, visit <http://www.ncdot.gov/transportation/operations/management/unit/mapping> and click on Data Providers or contact us by phone at (919) 855-8480.

COPIES OF THIS MAP ARE AVAILABLE
 AT A PUBLIC INFORMATION COST
 ADDRESS:
 N.C. DEPARTMENT OF TRANSPORTATION
 MSAU-MAPPING SECTION
 4809 BERNI, RD.
 RALEIGH, NC 27609