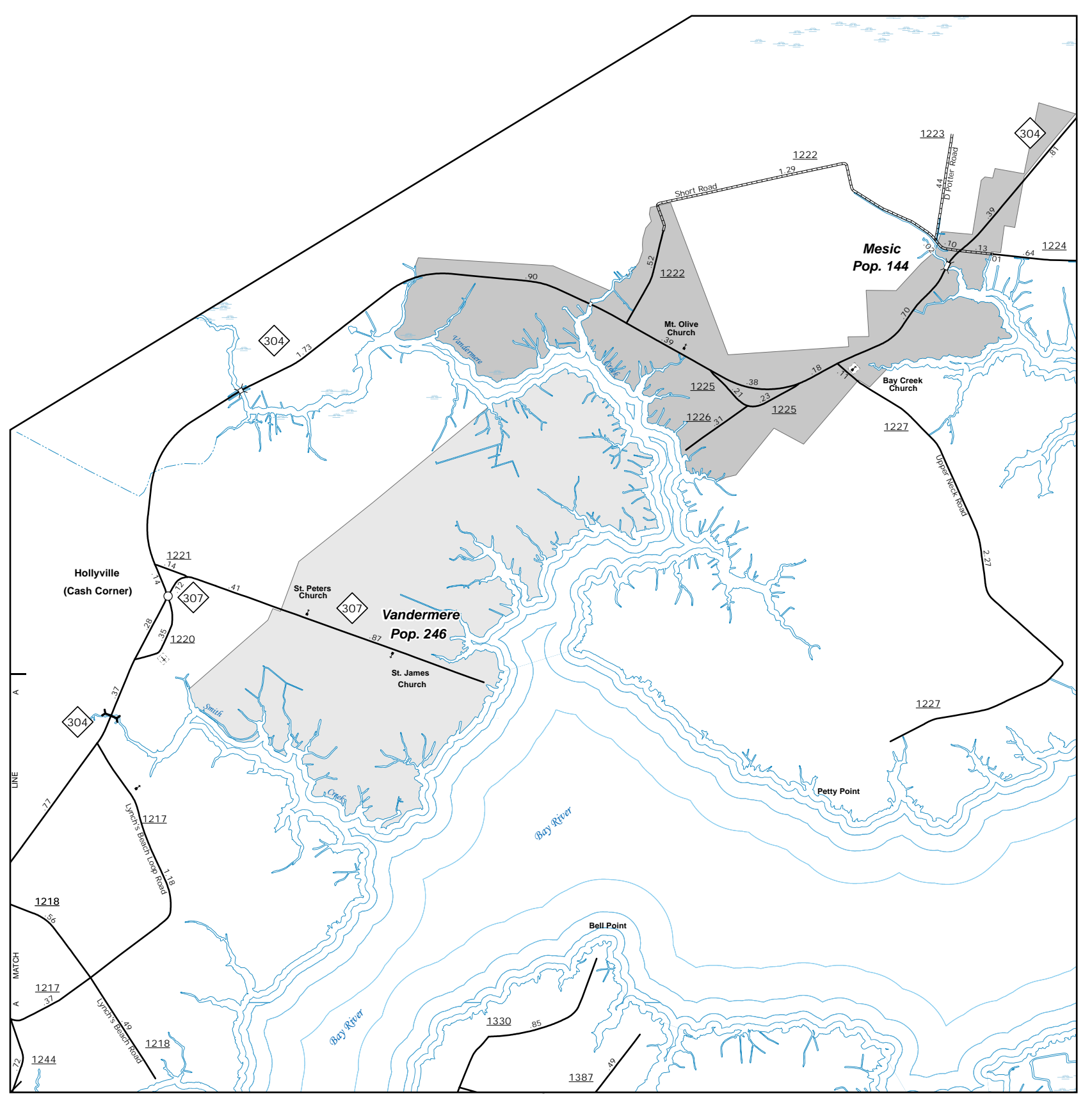
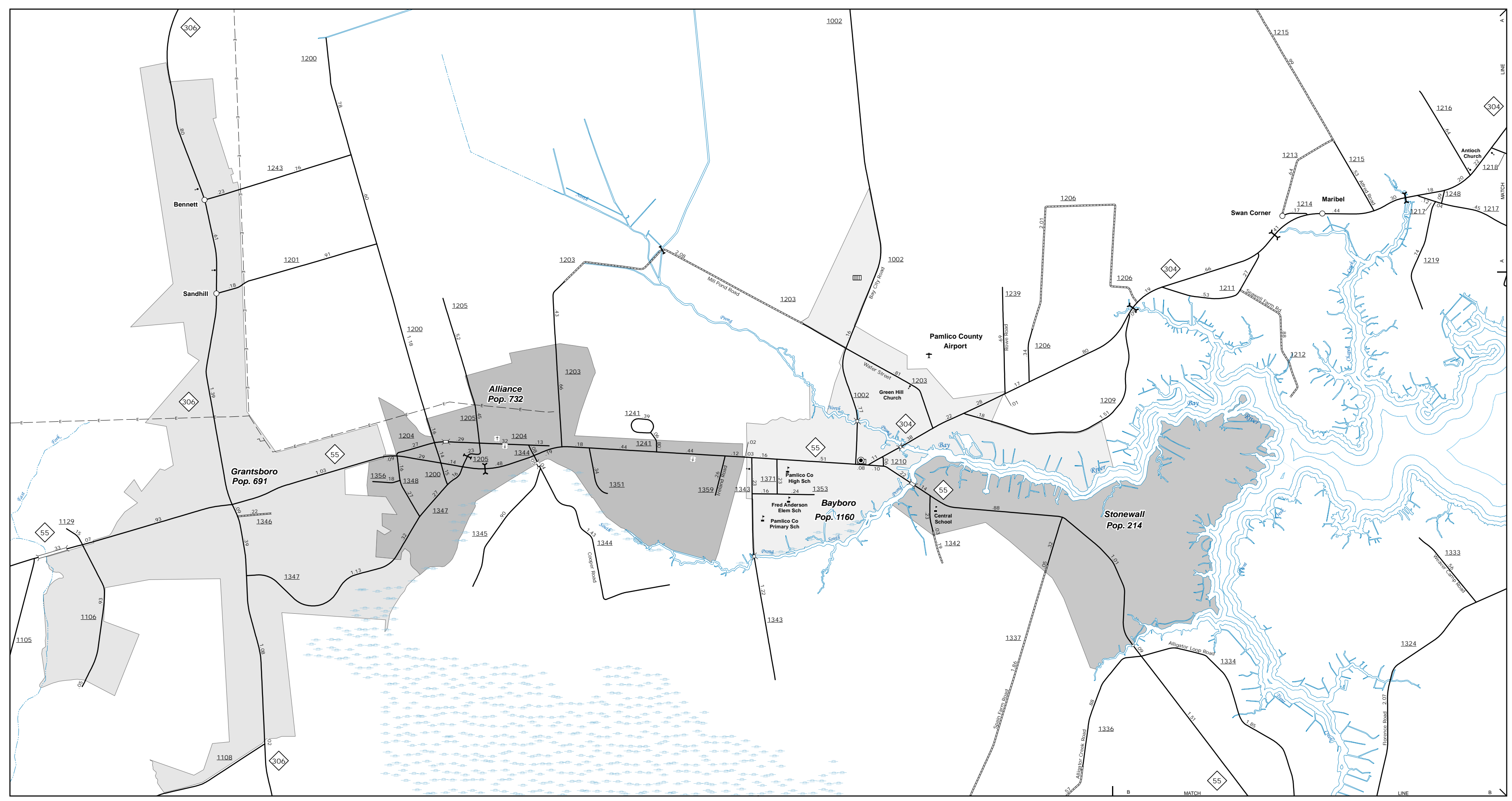
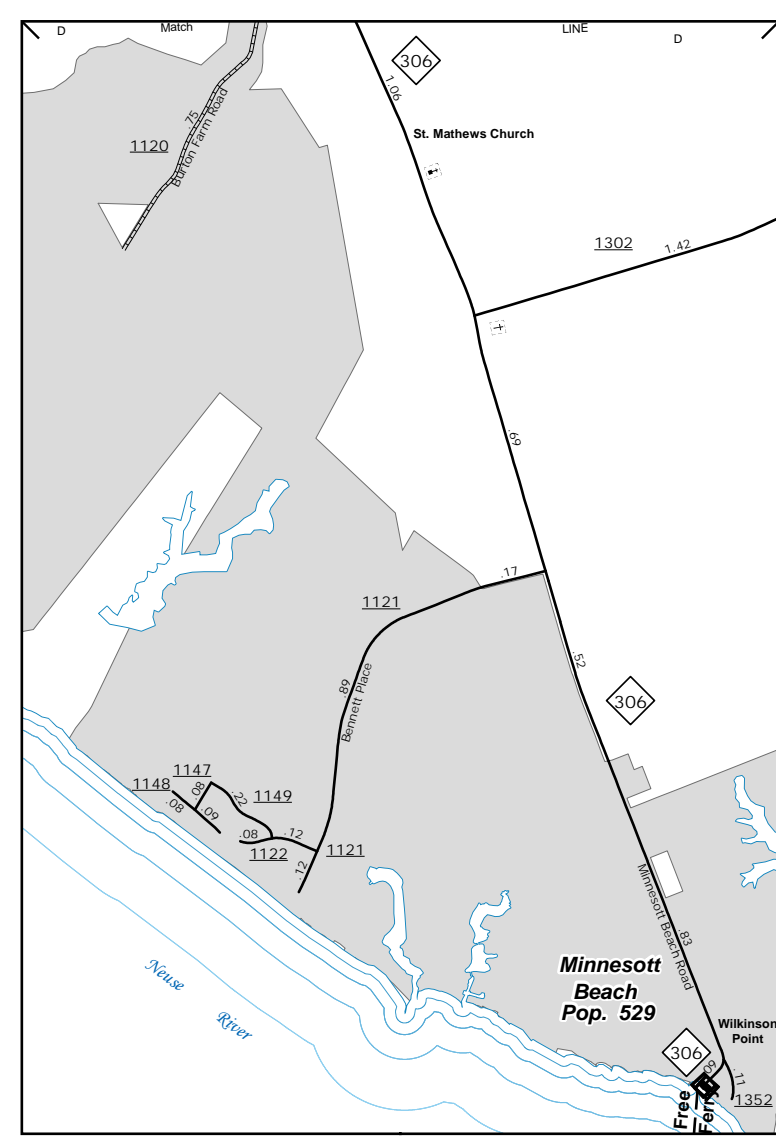


The Mapping Section's goal is to provide the most accurate and current information possible. Map data is compiled from various sources including aerial photography, ground surveys, and other data. The Mapping Section is not responsible for errors or omissions. The Mapping Section is not responsible for any damage or loss resulting from the use of this map. For more information, visit <http://www.ncdot.gov/transportation/mapping> and click on Data Providers or contact us by phone at (919) 855-8480.

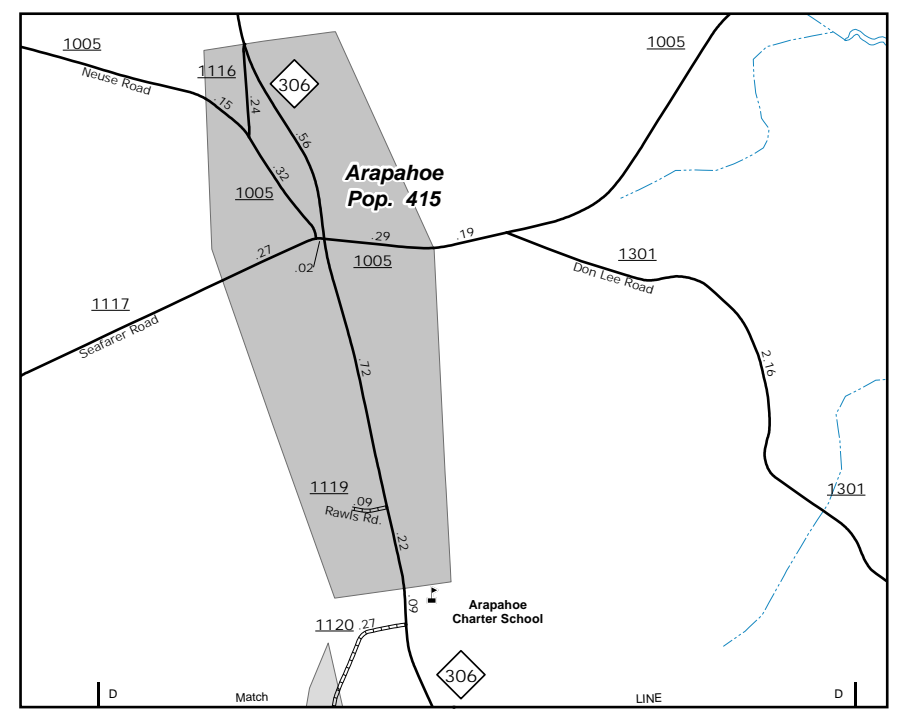
COPIES OF THIS MAP ARE AVAILABLE FOR PURCHASE AT A NOMINAL COST. ADDRESS: N.C. DEPARTMENT OF TRANSPORTATION, MSAU - MAPPING SECTION, 4809 BERNLIE DR., RALEIGH, NC 27606



Vandermere

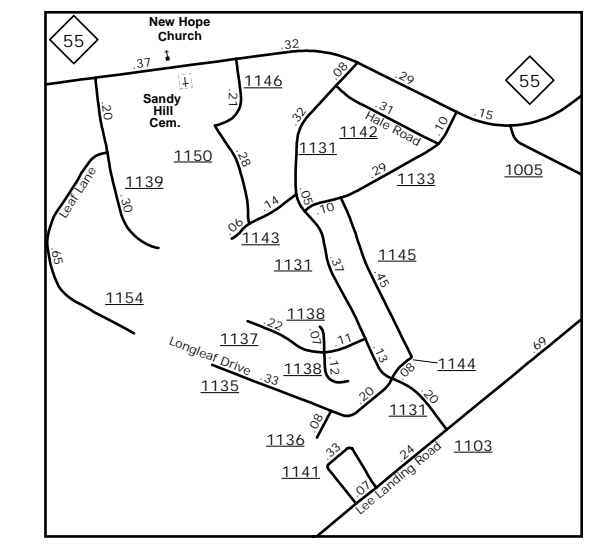


Minnesott Beach



Arapahoe

Bayboro



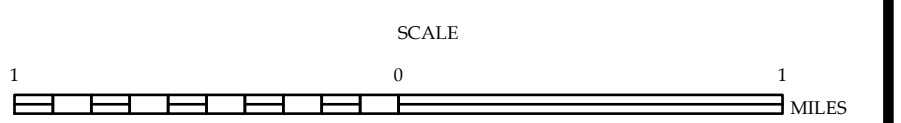
Sand Hill Cemetery



ENLARGED MUNICIPAL AND SUBURBAN AREAS

**PAMLICO COUNTY  
NORTH CAROLINA**

PREPARED BY THE  
NORTH CAROLINA DEPARTMENT OF TRANSPORTATION  
OPERATIONS PROGRAM MANAGEMENT UNIT - MAPPING SECTION  
IN COOPERATION WITH THE  
U.S. DEPARTMENT OF TRANSPORTATION  
FEDERAL HIGHWAY ADMINISTRATION



10,000 FOOT GRID BASED ON NORTH CAROLINA PLANE COORDINATE SYSTEM  
LAMBERT CONFORMAL CONIC PROJECTION