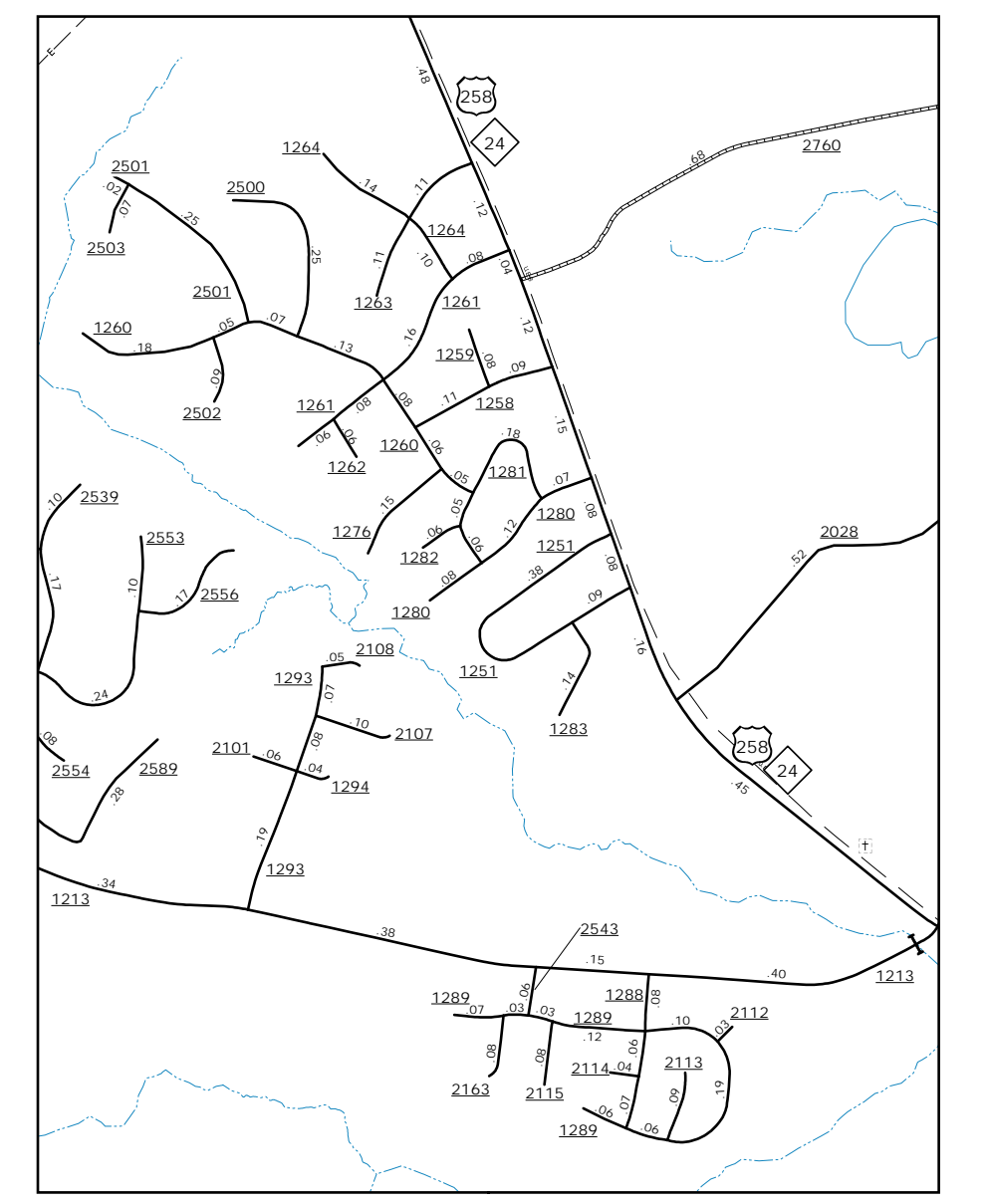
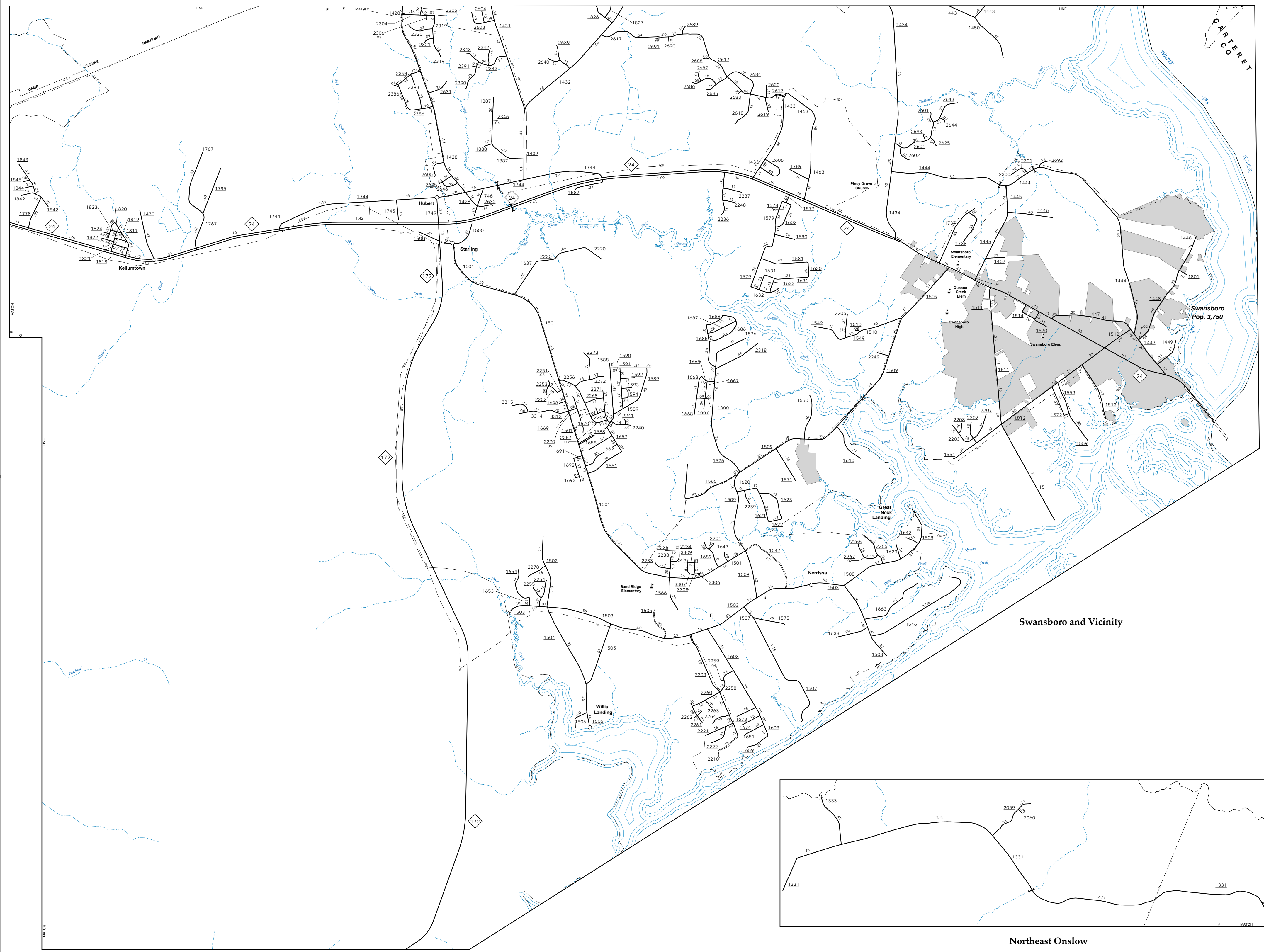
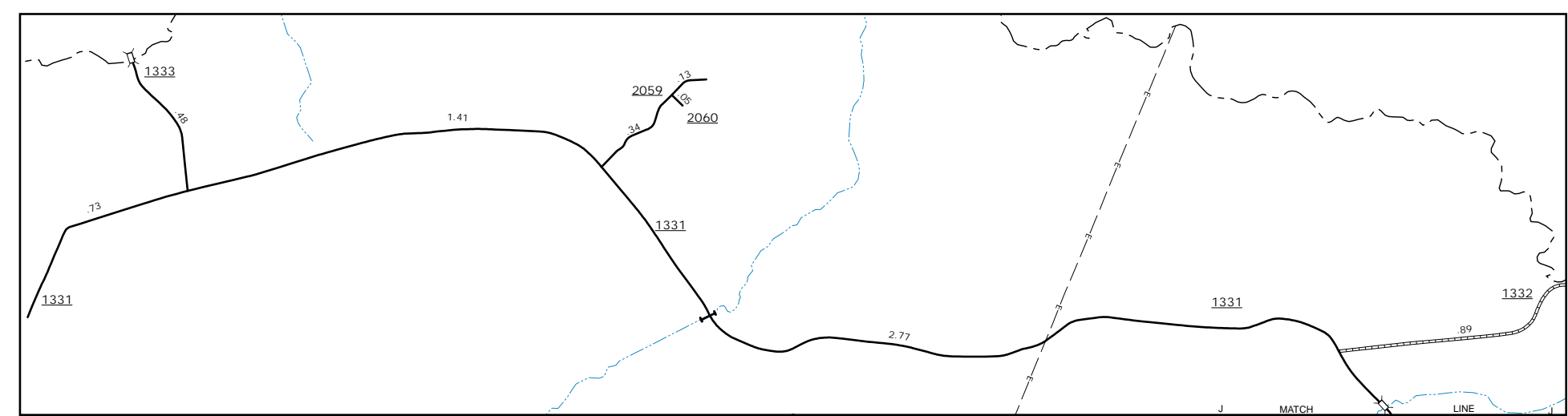


The Mapping Section's goal is to provide the most accurate and current information possible. Map data is compiled from various sources including aerial photography, ground surveys, and other data. The information is subject to change without notice. The information is provided for informational purposes only. The information is not to be used for legal purposes. For additional information, visit <http://www.ncdot.gov/transportation/mapping> and click on Data Providers or contact us by phone at (919) 855-8480.

COPIES OF THIS MAP ARE AVAILABLE
 AT A PUBLIC AT NOMINAL COST
 ADDRESS:
 N.C. DEPARTMENT OF TRANSPORTATION
 MAU-MAPPING SECTION
 4809 BERNI, LD.
 RALEIGH, NC 27689



US-258 & NC-24
 0 0.25 0.5
 MILES



Northeast Onslow

ENLARGED MUNICIPAL AND SUBURBAN AREAS
ONSLow COUNTY
 NORTH CAROLINA
 PREPARED BY THE
 NORTH CAROLINA DEPARTMENT OF TRANSPORTATION
 OPERATIONS PROGRAM MANAGEMENT UNIT - MAPPING SECTION
 IN COOPERATION WITH THE
 U.S. DEPARTMENT OF TRANSPORTATION
 FEDERAL HIGHWAY ADMINISTRATION

SCALE
 1 0 1
 MILES

10,000 FOOT GRID BASED ON NORTH CAROLINA PLANE COORDINATE SYSTEM
 LAMBERT CONFORMAL CONIC PROJECTION