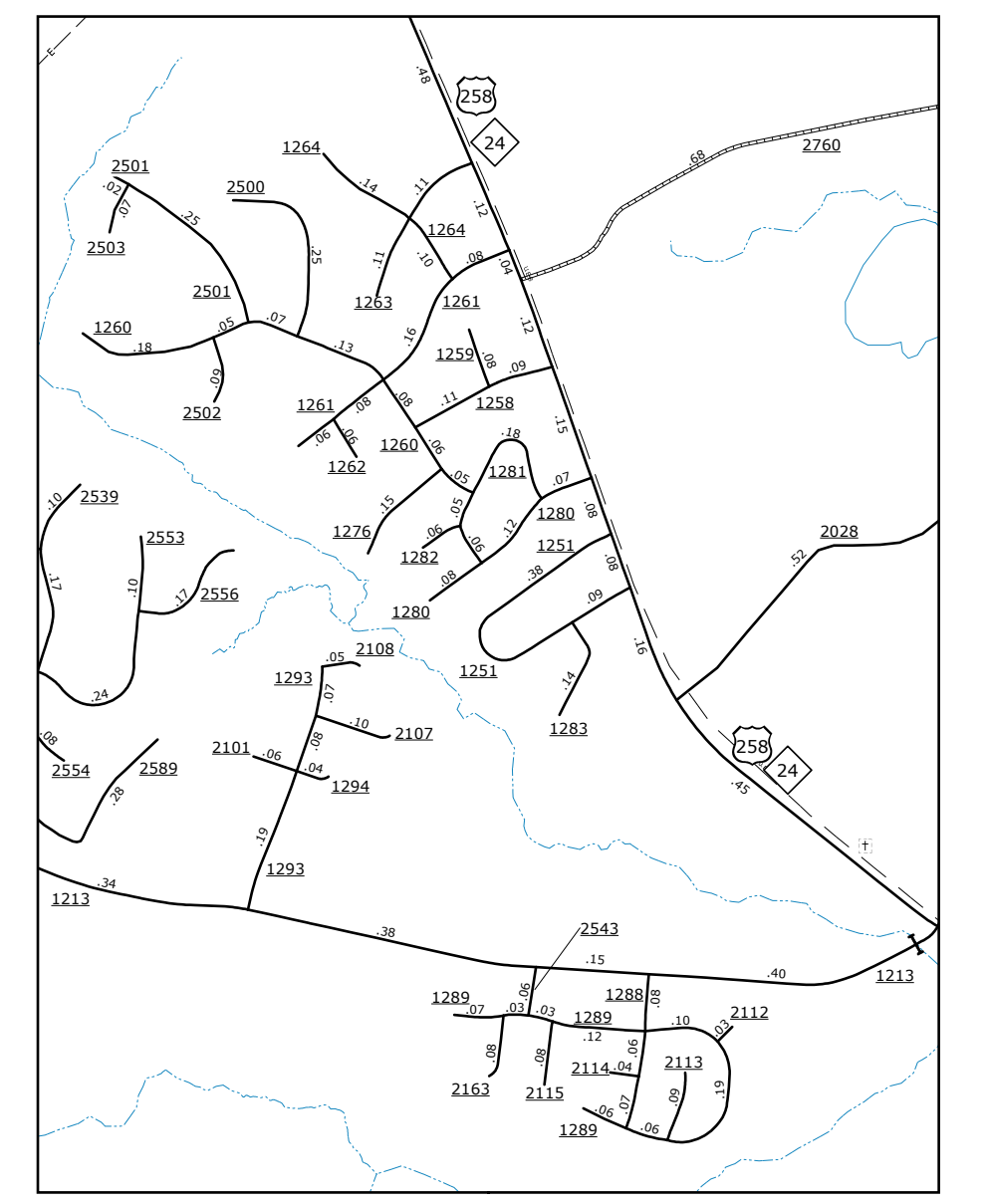
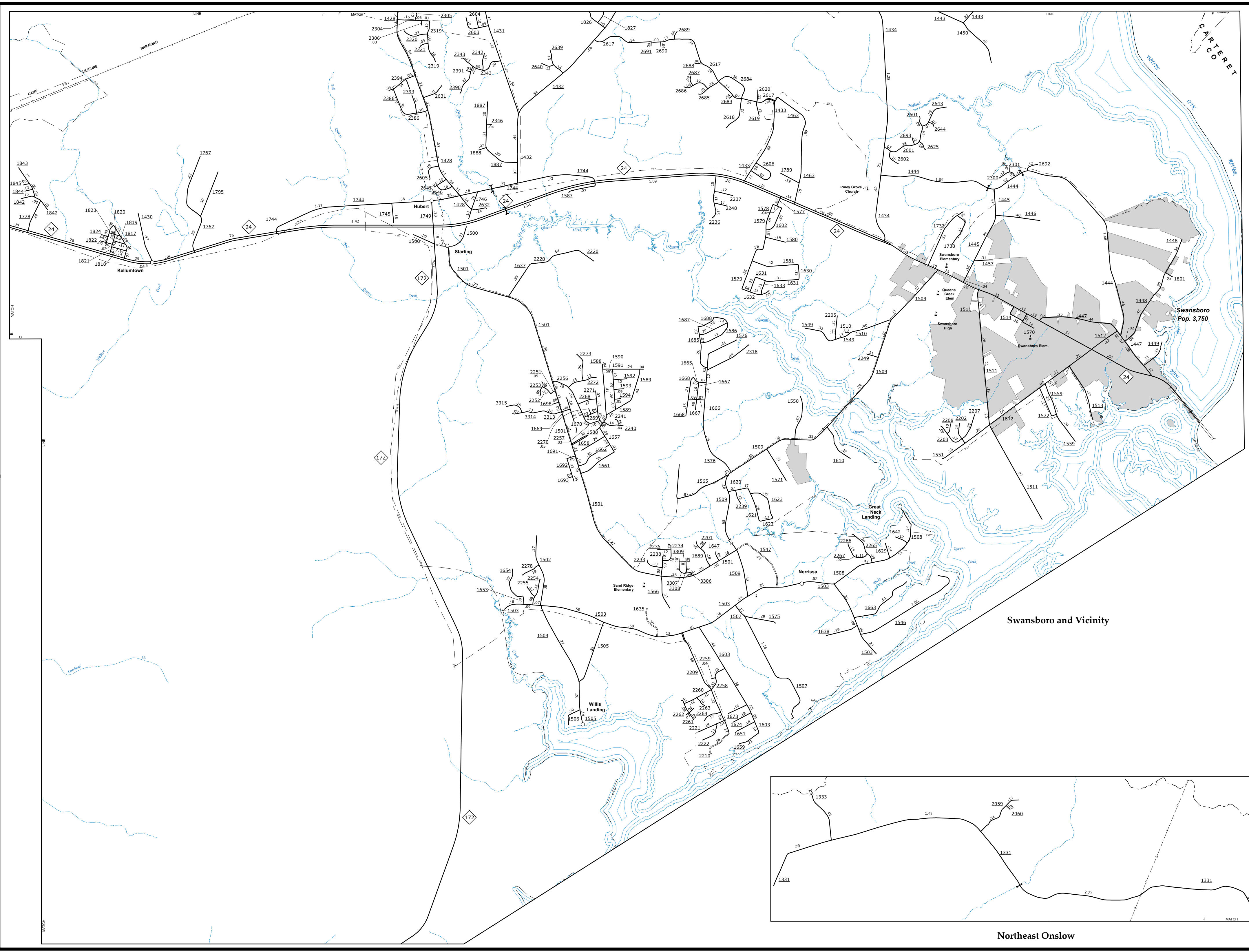
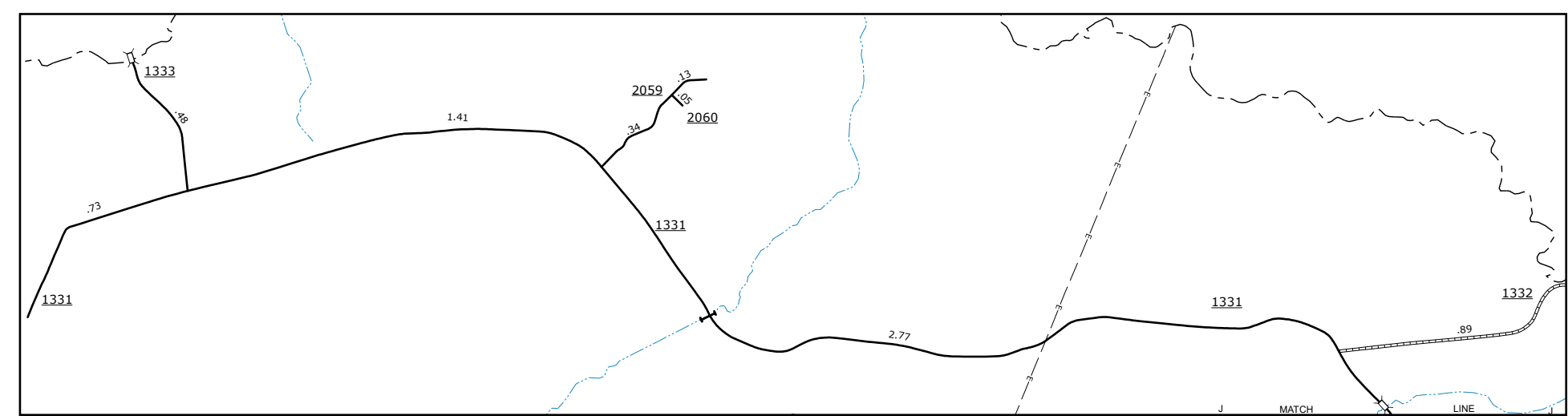


The Mapping Section's goal is to provide the most accurate and current information possible. Map data is compiled from various sources including aerial photography, ground surveys, and other data. The information is subject to change without notice. The information is provided for informational purposes only. It is not intended to be used for legal or other purposes. For additional information, visit <http://www.ncdot.gov/overlays/mapping/> and click on Data Providers or contact us by phone at (919) 855-8480.

COPIES OF THIS MAP ARE AVAILABLE TO THE PUBLIC AT NOMINAL COST. ADDRESS: N.C. DEPARTMENT OF TRANSPORTATION, MSAU-MAPPING SECTION, 4801 BERNI, CO., RALEIGH, NC 27609



US-258 & NC-24
0 0.25 0.5 MILES



Northeast Onslow

N

ENLARGED MUNICIPAL AND SUBURBAN AREAS
ONSLow COUNTY
NORTH CAROLINA

PREPARED BY THE
NORTH CAROLINA DEPARTMENT OF TRANSPORTATION
OPERATIONS PROGRAM MANAGEMENT UNIT - MAPPING SECTION
IN COOPERATION WITH THE
U.S. DEPARTMENT OF TRANSPORTATION
FEDERAL HIGHWAY ADMINISTRATION

SCALE
1 0 1 MILES

10,000 FOOT GRID BASED ON NORTH CAROLINA PLANE COORDINATE SYSTEM
LAMBERT CONFORMAL CONIC PROJECTION