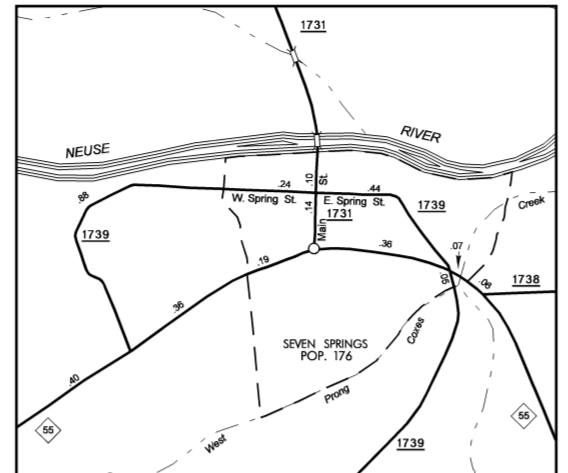
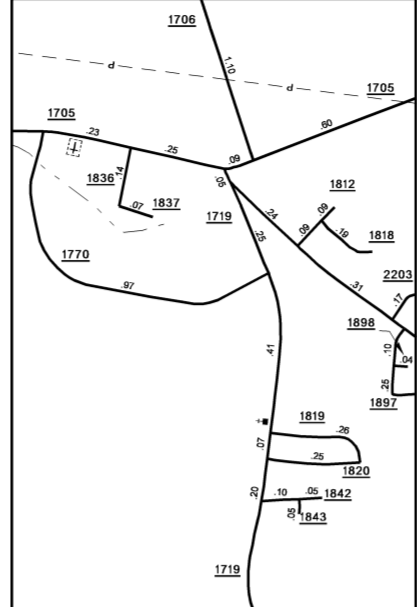


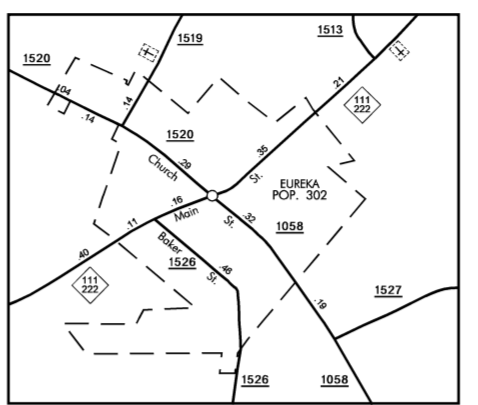
Dudley and Brogden



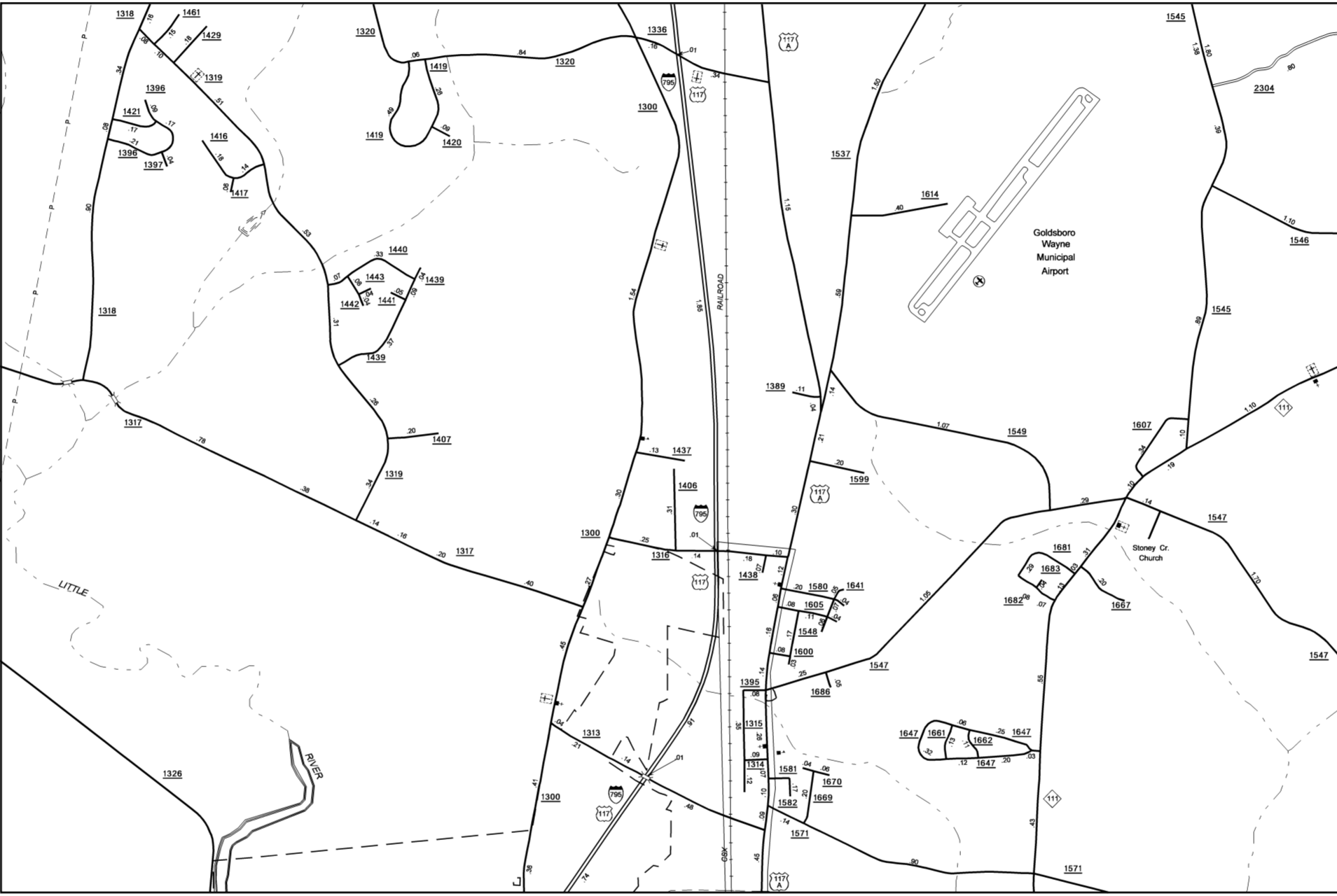
Seven Springs  
POP. 86



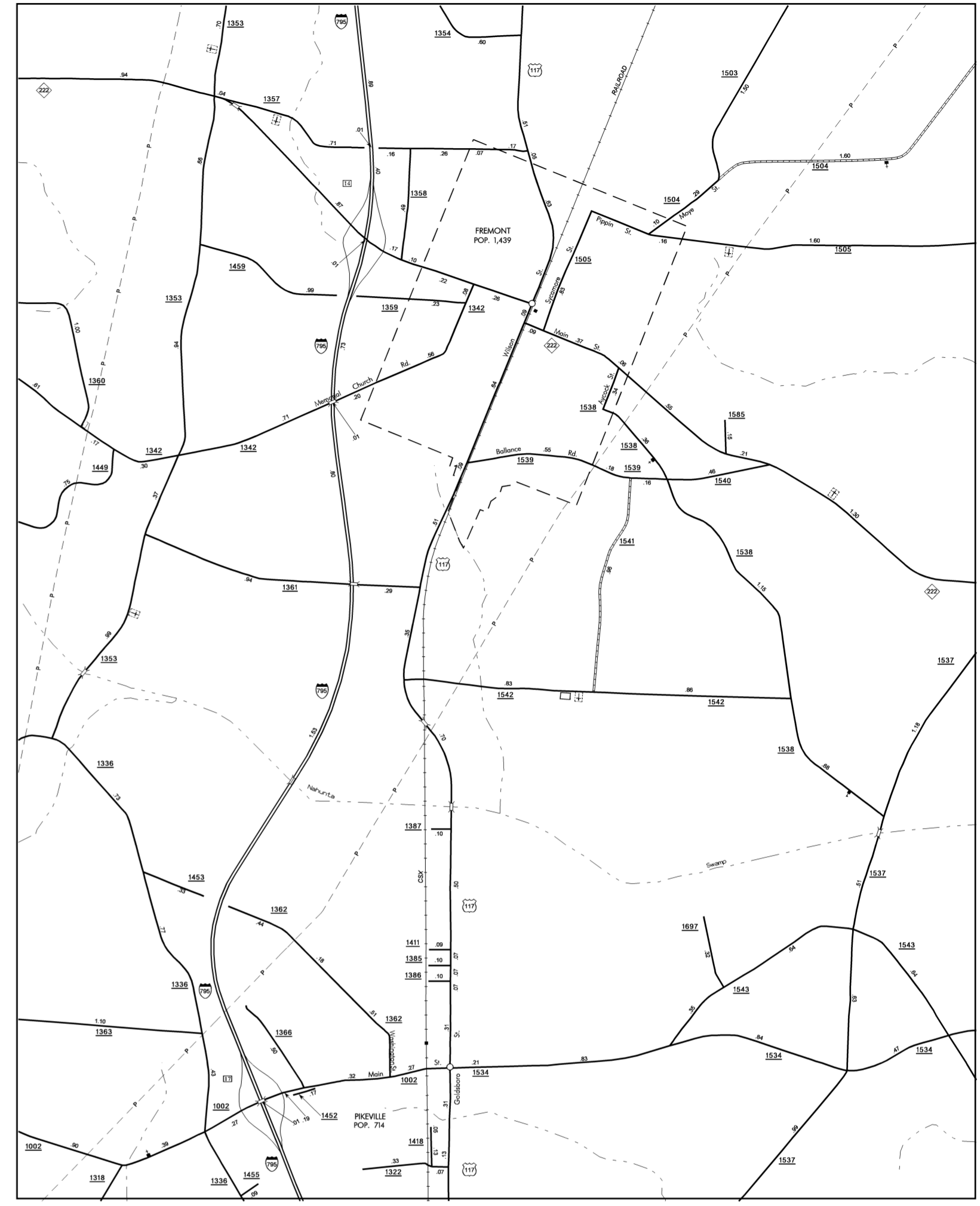
Inset 1



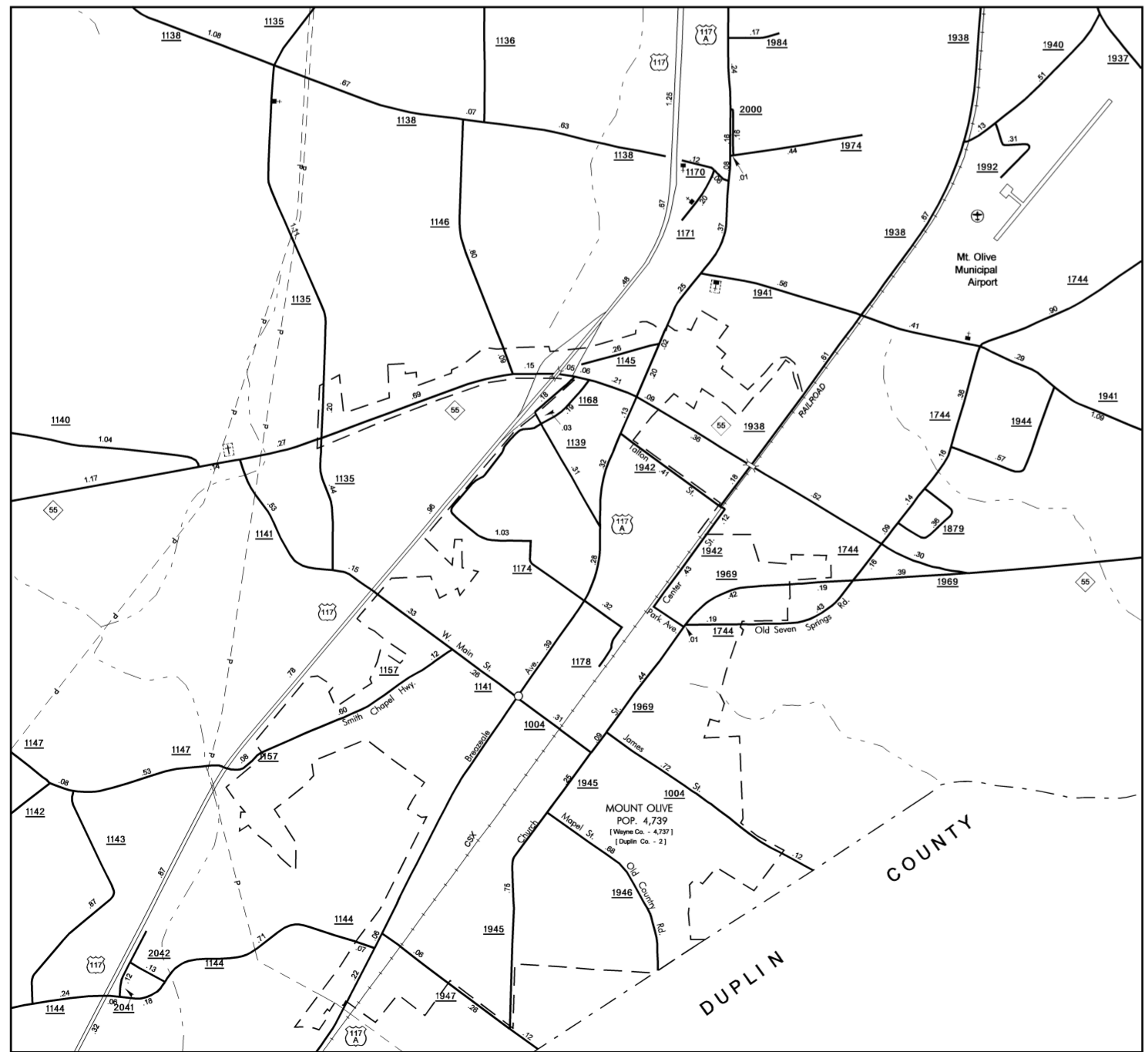
Eureka  
POP. 241



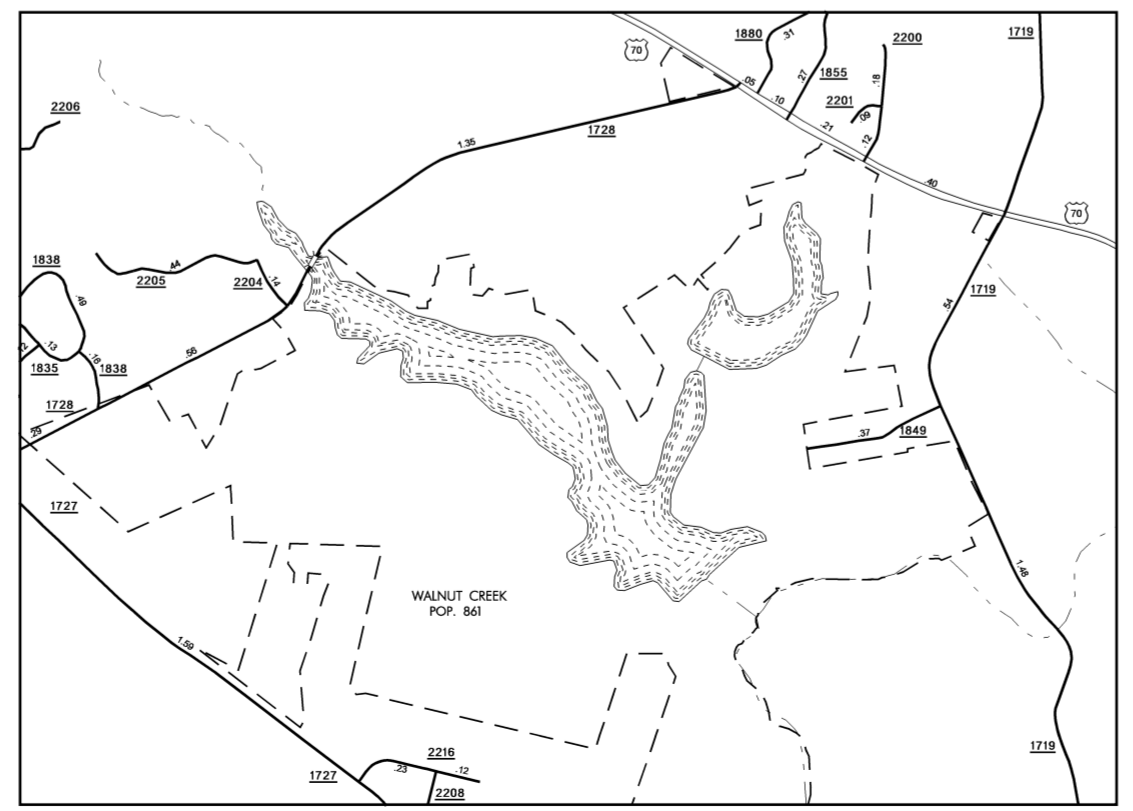
Belfair and vicinity



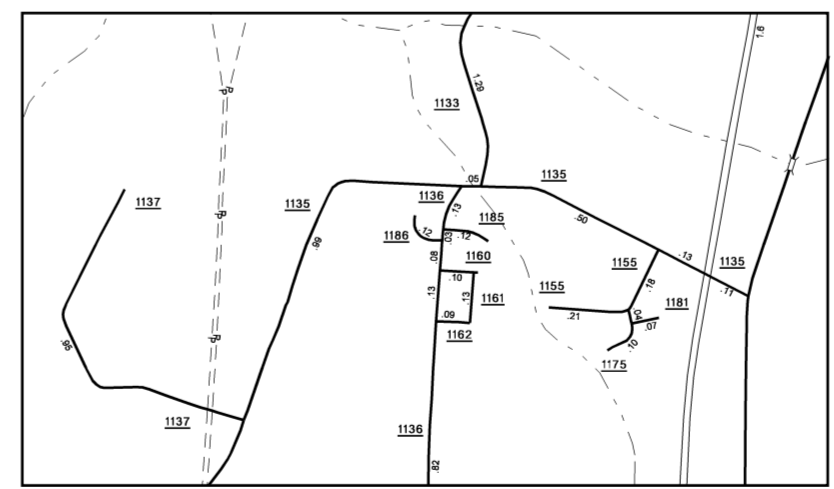
Fremont and Pikeville  
POP. 2,153



Mount Olive  
Pop. 4,596



Walnut Creek  
Pop. 841



Inset 2



ENLARGED MUNICIPAL AND SUBURBAN AREAS  
**WAYNE COUNTY**  
NORTH CAROLINA

PREPARED BY THE  
NORTH CAROLINA DEPARTMENT OF TRANSPORTATION  
STATE ROAD MAINTENANCE UNIT - MAPPING AND INFORMATION SECTION

IN COOPERATION WITH THE  
U.S. DEPARTMENT OF TRANSPORTATION  
FEDERAL HIGHWAY ADMINISTRATION

SCALE



10,000 FOOT GRID BASED ON NORTH CAROLINA PLANE COORDINATE SYSTEM  
POLYCONIC PROJECTION

COPIES OF THIS MAP ARE AVAILABLE TO THE PUBLIC AT A NOMINAL COST

REVISOR  
3/20/08 BDG  
4/29/08 BDG  
6/5/08 BDG  
10/17/08 BDG  
4/24/09 BDG  
10/13/09 BDG  
1/22/10 BDG  
3/2/10 BDG

WAYNE