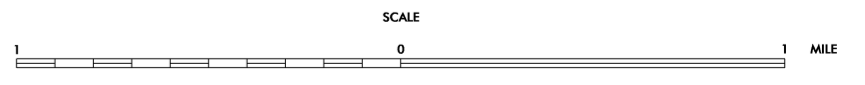


ENLARGED MUNICIPAL AND SUBURBAN AREAS
UNION COUNTY
 NORTH CAROLINA

PREPARED BY THE
 NORTH CAROLINA DEPARTMENT OF TRANSPORTATION
 STATE ROAD MAINTENANCE UNIT - MAPPING AND INFORMATION SECTION
 IN COOPERATION WITH THE
 U.S. DEPARTMENT OF TRANSPORTATION
 FEDERAL HIGHWAY ADMINISTRATION



COPIES OF THIS MAP ARE AVAILABLE TO THE PUBLIC AT A NOMINAL COST.
 ADDRESS:
 N.C. DEPARTMENT OF TRANSPORTATION
 STATE ROAD MAINTENANCE UNIT - MAPPING AND INFORMATION SECTION
 3401 CARL SANDERS BLVD.
 RALEIGH, N.C. 27610

REVISED
07/05 MEM
07/11 MEM
10/09 MEM
10/09 MEM
1/22/10 MEM
2/2/10 MEM
2/22/10 MEM

SUP. 6
 UNION