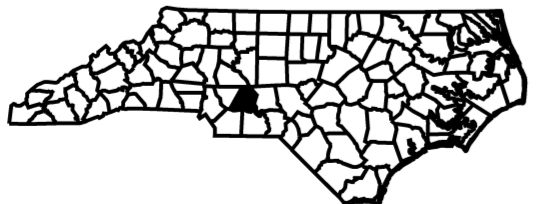
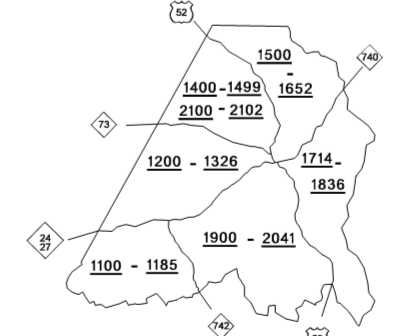
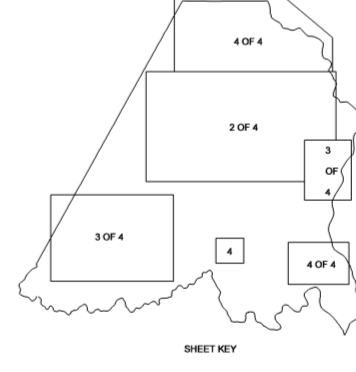


- LEGEND**
- PRIMITIVE OR UNIMPROVED ROAD
 - GRADED AND DRAINED ROAD
 - SOIL GRAVEL OR STONE SURFACED ROAD
 - HARD SURFACED ROAD
 - 4 LANE UNDIVIDED HIGHWAY
 - DIVIDED HIGHWAY
 - HIGHWAY WITH FRONTAGE ROADS
 - FCA
 - NON-SYSTEM ROAD
 - PROJECTED LOCATION
 - INTERSECTION DISTANCE
 - TRAFFIC CIRCLE
 - HIGHWAY INTERCHANGE
 - DETAILED HIGHWAY INTERCHANGE
 - ROAD THROUGH MOUNTAIN PASS
 - HIGHWAY BRIDGE
 - UNDERPASS
 - OVERPASS
 - DRAW SPAN ON BRIDGE
 - HIGHWAY TUNNEL
 - FORD
 - INTERSTATE HIGHWAY
 - U.S. NUMBERED HIGHWAY
 - N.C. NUMBERED HIGHWAY
 - U.S. NUMBERED BICYCLE ROUTE
 - N.C. NUMBERED BICYCLE ROUTE
 - INTERSTATE INTERCHANGE NUMBER
 - SECONDARY ROAD NUMBER
 - CABLE
 - RAILROAD, ANY NUMBER OF TRACKS USED BY SINGLE OPERATING COMPANY
 - RAILROAD, ANY NUMBER OF TRACKS USED BY MORE THAN ONE OPERATING COMPANY ON SAME OR ADJACENT RIGHTS-OF-WAY
 - RAILROAD STATION
 - GRADE CROSSING
 - UNDERPASS
 - OVERPASS
 - RAILROAD TUNNEL
 - INSET AREA
 - URBAN EXTENSION
 - BOUNDARY LINE
 - RESERVATION OR PARK BOUNDARY
 - CITY LIMIT
 - NATIONAL FOREST BOUNDARY
 - STATE FOREST BOUNDARY
 - FEDERAL GAMELAND BOUNDARY
 - STATE GAMELAND BOUNDARY
 - MILITARY RESERVATION BOUNDARY
 - COUNTY LINE
 - STATE LINE
 - INCORPORATED CITY OR VILLAGE, (GENERALIZED)
 - FREE OR TOLL FERRY
 - CANAL
 - NARROW STREAM
 - WIDE STREAM
 - DAM WITH LOCK
 - DAM
 - RESERVOIR, POND OR LAKE
 - COMMUNITY AND TOWN CENTER
 - COUNTY SEAT
 - SCHOOL
 - COLLEGE OR UNIVERSITY
 - HOSPITAL
 - CHURCH
 - CHURCH WITH CEMETERY
 - CEMETERY
 - PATROL STATION
 - CORRECTIONAL OR PENAL INSTN.
 - HIGHWAY GARAGE OR MAINT. YARD
 - HIGHWAY DIV. OR DIST. OFFICE
 - WEIGHT STATION
 - MONUMENT-SMALL HISTORICAL SITE
 - LIGHTHOUSE
 - MOUNTAIN PEAK
 - REST AREA
 - TRIANGULATION STATION
 - COAST GUARD STATION
 - MILITARY AIRFIELD
 - COMMERCIAL OR MUNICIPAL FIELD
 - HANGAR ON FIELD
 - LANDING STRIP
 - MARKED AUXILIARY FIELD



County Boundary alignments are based on information provided by State and Federal agencies, and are shown in their approximate locations.



COPIES OF THIS MAP ARE AVAILABLE TO THE PUBLIC AT A NOMINAL COST.
 ADDRESS:
 N.C. DEPARTMENT OF TRANSPORTATION
 DIVISION OF HIGHWAY AND SERVICES
 3401 CAPE SANDHURST CT.
 RALEIGH, N.C. 27610

REVISED
 4/2009 MEM
 10/07/09 MEM
 10/30/09 MEM

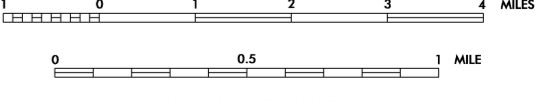
NOTE: MAP INCLUDES ONLY STATE MAINTAINED ROADS OR IMPORTANT NON-SYSTEM ROADS.
 ROADS SHOWN AS OF OCT. 30, 2009

STANLY COUNTY

NORTH CAROLINA

PREPARED BY THE
 NORTH CAROLINA DEPARTMENT OF TRANSPORTATION
 STATE ROAD MAINTENANCE UNIT - MAPPING AND INFORMATION SECTION

IN COOPERATION WITH THE
 U.S. DEPARTMENT OF TRANSPORTATION
 FEDERAL HIGHWAY ADMINISTRATION



SCALE FOR ENLARGEMENTS

10,000 FOOT GRID BASED ON NORTH CAROLINA PLANE COORDINATE SYSTEM
 POLYCONIC PROJECTION