

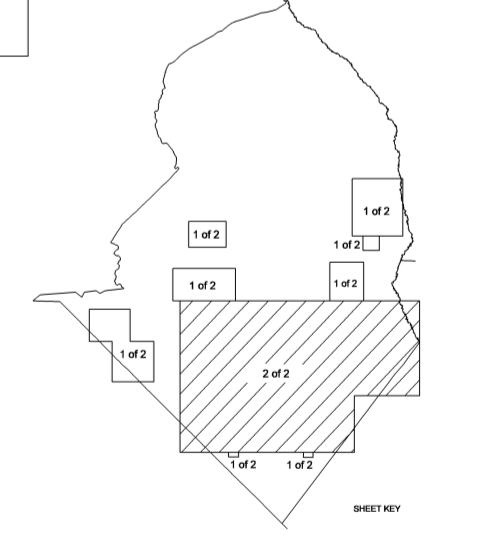
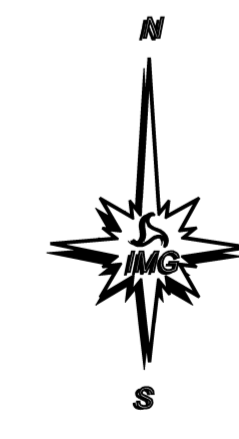


SCOTLAND SUP. 1

COPIES OF THIS MAP ARE AVAILABLE TO THE PUBLIC AT A NOMINAL COST.

N.C. DEPARTMENT OF TRANSPORTATION
ADDRESS: 4001 SANDHURST CT.
RALEIGH, N.C. 27612

REVISED:
2/29/00 JSH
4/05/01 JSH
11/13/02 JSH
12/15/03 JSH
11/29/04 JSH
09/06/05 JSH
7/11/06 TRP
12/20/06 TRP
6/9/08 TRP



ENLARGED MUNICIPAL AND SUBURBAN AREAS

SCOTLAND COUNTY

NORTH CAROLINA

PREPARED BY THE
NORTH CAROLINA DEPARTMENT OF TRANSPORTATION
STATE ROAD MAINTENANCE UNIT - MAPPING AND INFORMATION SECTION

IN COOPERATION WITH THE
U.S. DEPARTMENT OF TRANSPORTATION
FEDERAL HIGHWAY ADMINISTRATION

SCALE
0 1 MILE

10,000 FOOT GRID BASED ON NORTH CAROLINA PLANE COORDINATE SYSTEM
POLYCONIC PROJECTION

SHEET 2 OF 2