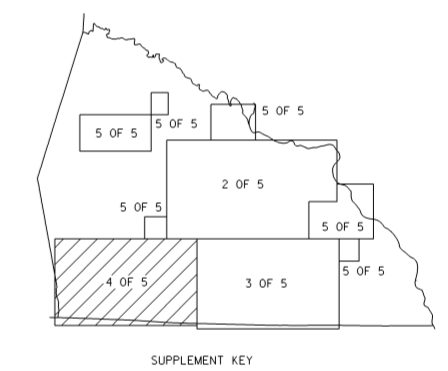
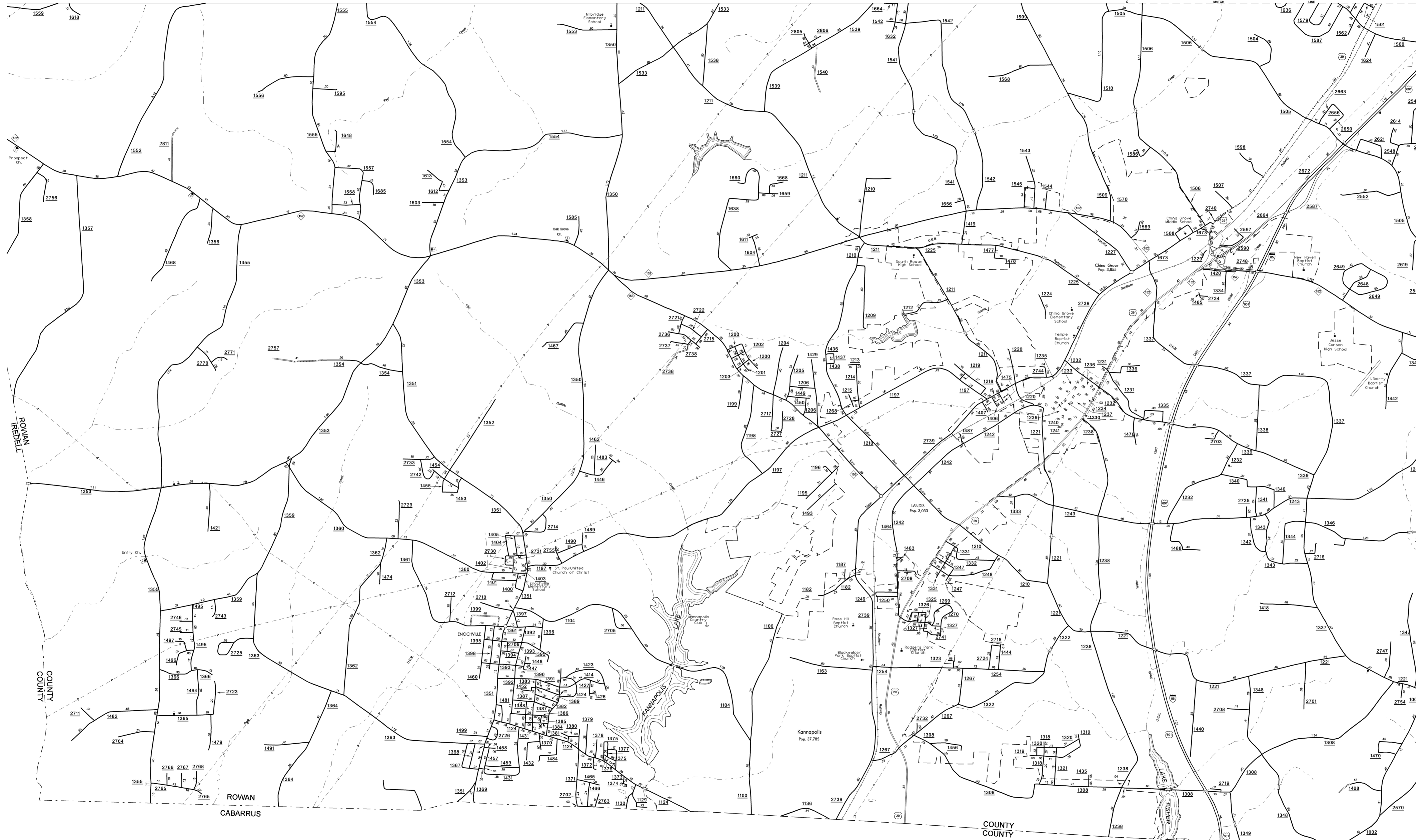


ROWAN
 SUP. 3
 COPIES OF THIS MAP ARE AVAILABLE
 TO THE PUBLIC AT A NOMINAL COST.
 ADDRESS:
 N.C. DEPARTMENT OF TRANSPORTATION
 STATE ROAD MAINTENANCE UNIT - MAPPING AND INFORMATION SECTION
 3401 CARR SANDBARCT.
 RALEIGH, N.C. 27610

REVISED	BY
3/26/07	JMB
4/2/07	JMB
5/11/07	JMB
7/19/07	JMB
10/9/07	JMB
12/4/07	JMB
3/27/08	RLN
9/29/08	RLN
11/14/08	RLN
11/16/09	RLN
2/23/10	SM



ENLARGED MUNICIPAL AND SUBURBAN AREAS
ROWAN COUNTY
 NORTH CAROLINA
 PREPARED BY THE
 NORTH CAROLINA DEPARTMENT OF TRANSPORTATION
 STATE ROAD MAINTENANCE UNIT - MAPPING AND INFORMATION SECTION
 IN COOPERATION WITH THE
 U.S. DEPARTMENT OF TRANSPORTATION
 FEDERAL HIGHWAY ADMINISTRATION

