



HIGH POINT
POP. 88,281

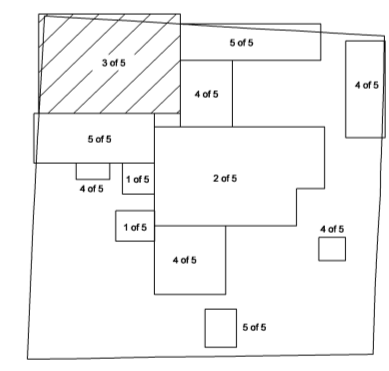
GUILFORD CO. 70,641
RANDOLPH CO. 29,537
DAVIDSON CO. 53,719

GUILFORD COUNTY

THOMASVILLE
POP. 25,337

TRINITY
POP. 6,794

DAVIDSON COUNTY



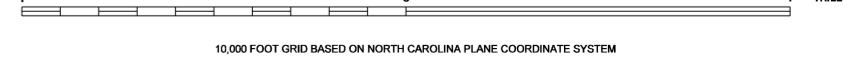
ENLARGED MUNICIPAL AND SUBURBAN AREAS

RANDOLPH COUNTY

NORTH CAROLINA

PREPARED BY THE
NORTH CAROLINA DEPARTMENT OF TRANSPORTATION
STATE ROAD MAINTENANCE UNIT - MAPPING AND INFORMATION SECTION

IN COOPERATION WITH THE
U.S. DEPARTMENT OF TRANSPORTATION
FEDERAL HIGHWAY ADMINISTRATION



1000 FOOT GRID BASED ON NORTH CAROLINA PLANE COORDINATE SYSTEM
POLYCONIC PROJECTION

COPIES OF THIS MAP ARE AVAILABLE TO THE PUBLIC AT A NOMINAL COST

N.C. DEPARTMENT OF TRANSPORTATION
STATE ROAD MAINTENANCE UNIT
3401 CAPE SANDHURST CT.
RALEIGH, N.C. 27610

REVISED
2/01/00 JHM
6/06/01 JHM
12/30/02 JHM
12/17/03 JHM
11/12/04 JHM
12/06/05 JHM
12/22/06 TRP
6/06/08 TRP
02/24/08 TRP
12/06/09 JHM