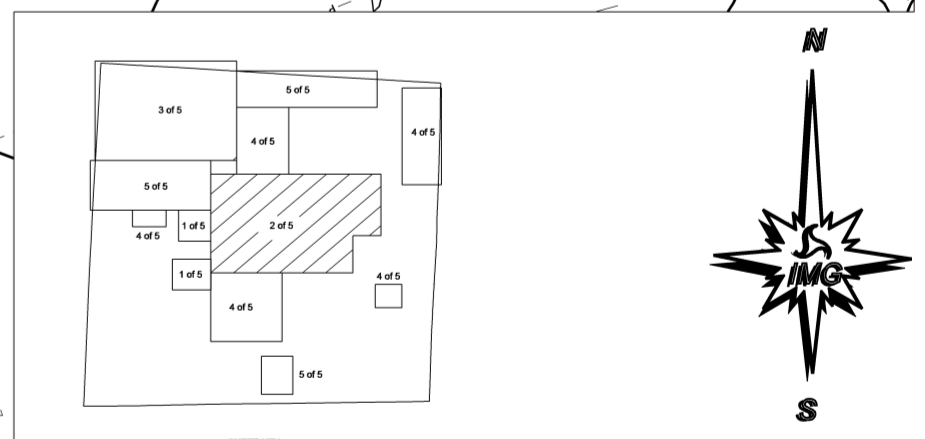


RANDOLPH SUP. 1
COPIES OF THIS MAP ARE AVAILABLE TO THE PUBLIC AT A NOMINAL COST.
ADDRESS:
N.C. DEPARTMENT OF TRANSPORTATION
STATE ROAD MAINTENANCE UNIT - MAPPING AND INFORMATION SECTION
3401 CAPE SANDHURST CT.
RALEIGH, N.C. 27610

REVISED
3/01/00 JHM
6/06/01 JHM
12/30/02 JHM
12/17/03 JHM
11/12/04 JHM
12/06/05 JHM
12/29/06 TRP
6/08/08 TRP
02/24/09 TRP
12/09/09 MAG



ENLARGED MUNICIPAL AND SUBURBAN AREAS

RANDOLPH COUNTY

NORTH CAROLINA

PREPARED BY THE
NORTH CAROLINA DEPARTMENT OF TRANSPORTATION
STATE ROAD MAINTENANCE UNIT - MAPPING AND INFORMATION SECTION

IN COOPERATION WITH THE
U.S. DEPARTMENT OF TRANSPORTATION
FEDERAL HIGHWAY ADMINISTRATION

1:50,000 FOOT GRID BASED ON NORTH CAROLINA PLANE COORDINATE SYSTEM
POLYCONIC PROJECTION

SHEET 2 OF 5