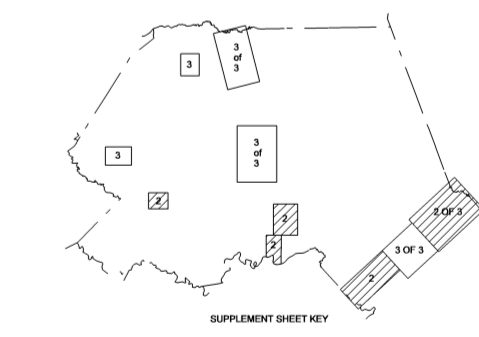
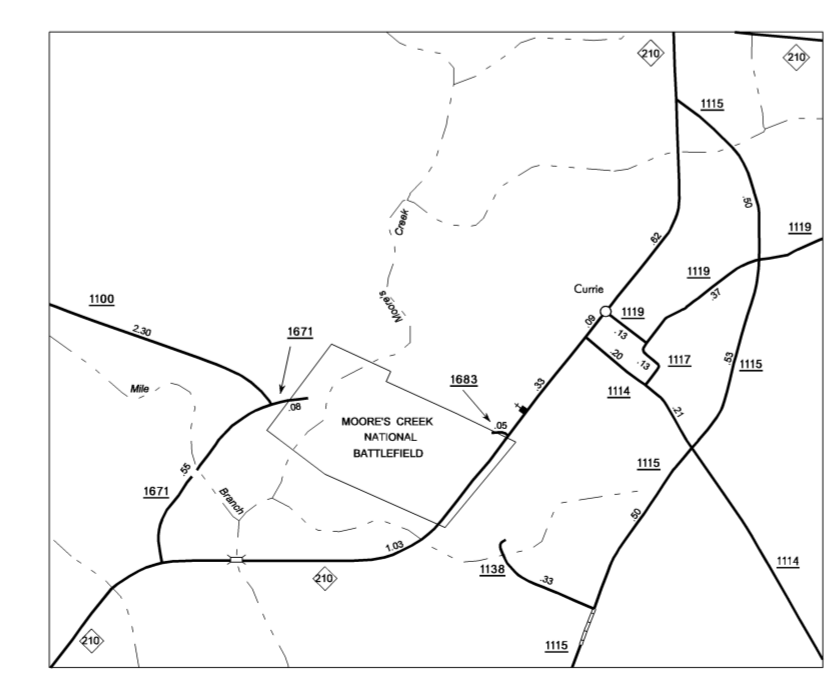
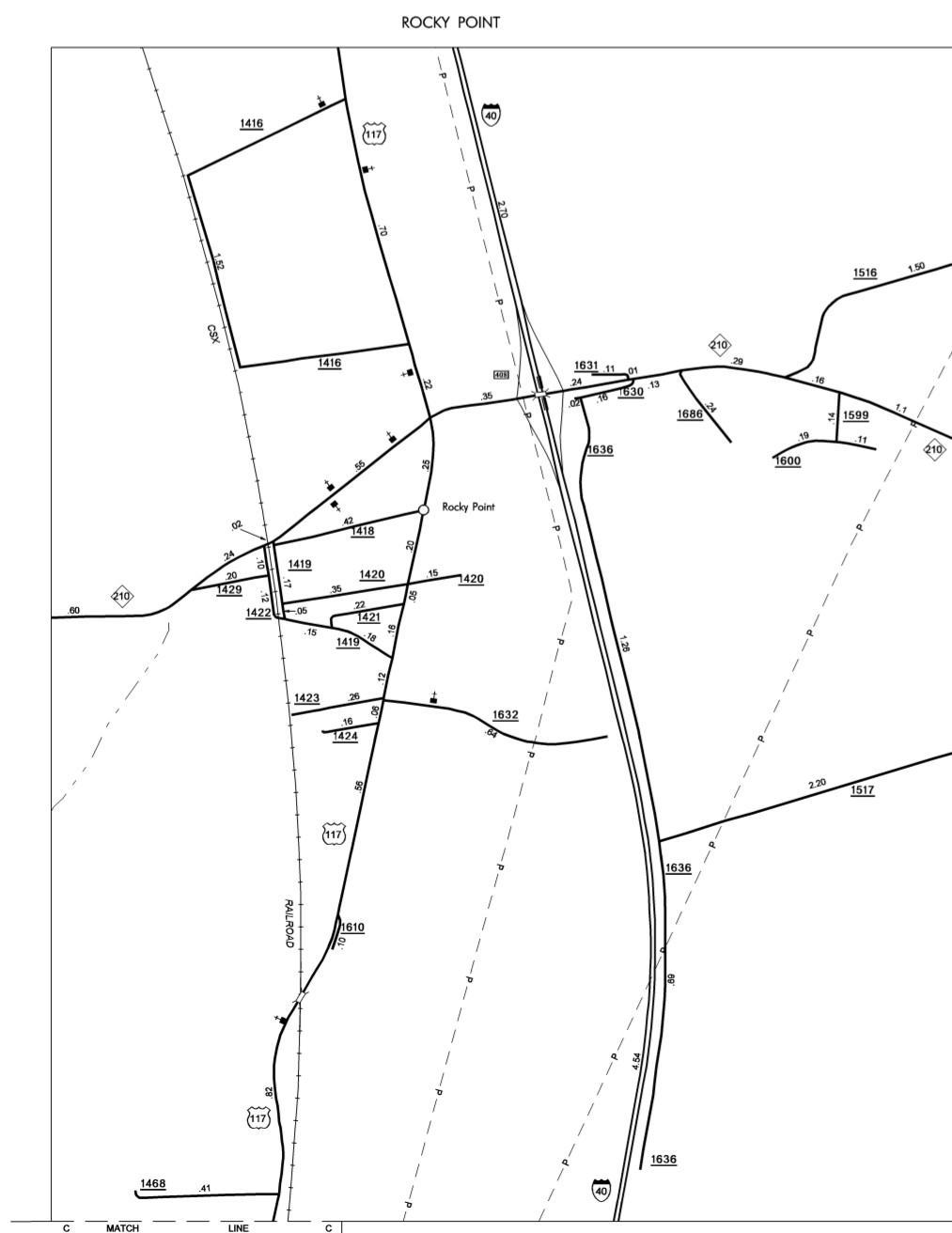
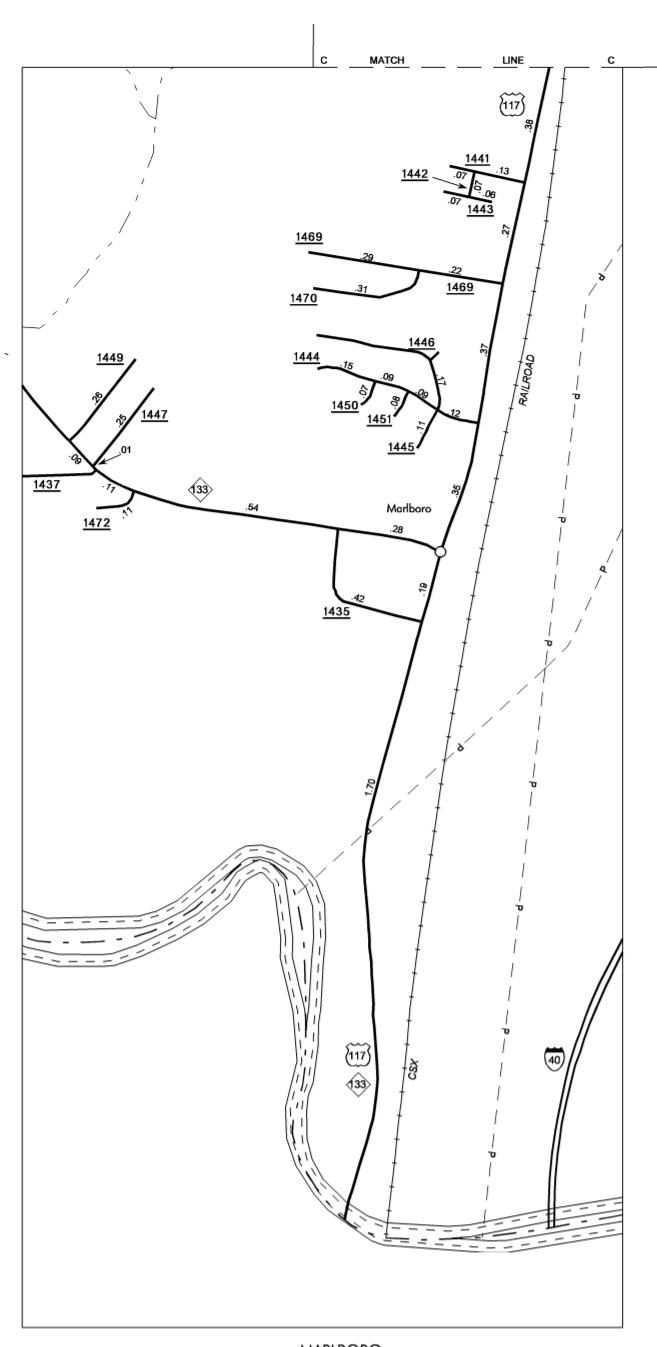
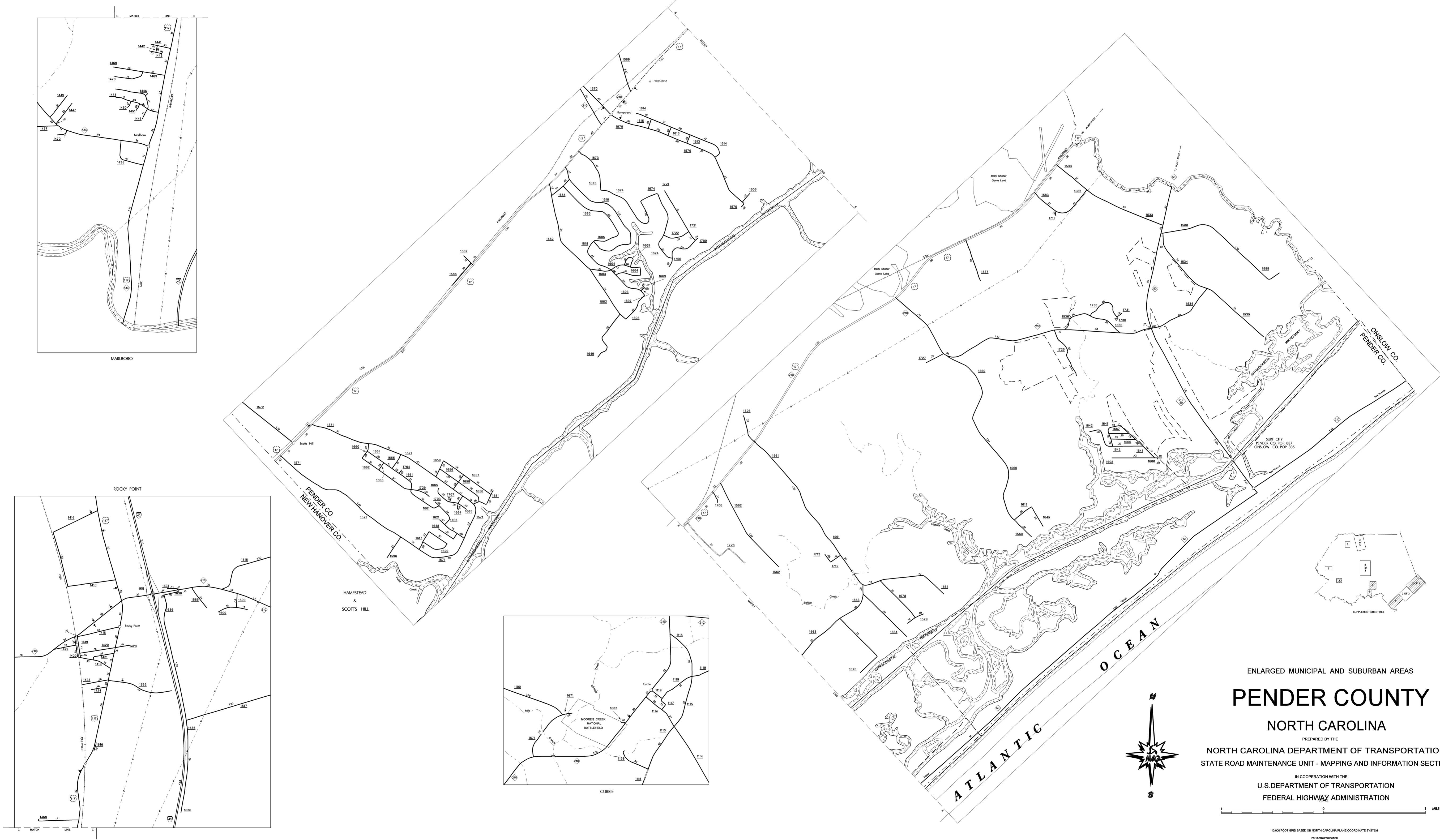


PENDER SUP. 1

COPIES OF THIS MAP ARE AVAILABLE TO THE PUBLIC AT A NOMINAL COST. ADDRESS: N.C. DEPARTMENT OF TRANSPORTATION, 3401 CAPE SANDHURST CT., FOLEY, N.C. 27510

REVISED
4/1/59 BCH
11/2/59 BCH
2/27/67 BCH
4/30/67 BCH
7/26/67 BCH
5/29/68 BCH
6/25/68 BCH
9/15/68 BCH
2/13/69 BDO
6/24/69 BDO
10/30/69 BDO
1/20/69 BDO
1/22/70 BDO



ENLARGED MUNICIPAL AND SUBURBAN AREAS

PENDER COUNTY

NORTH CAROLINA

PREPARED BY THE
 NORTH CAROLINA DEPARTMENT OF TRANSPORTATION
 STATE ROAD MAINTENANCE UNIT - MAPPING AND INFORMATION SECTION

IN COOPERATION WITH THE
 U.S. DEPARTMENT OF TRANSPORTATION
 FEDERAL HIGHWAY ADMINISTRATION

1 MILE