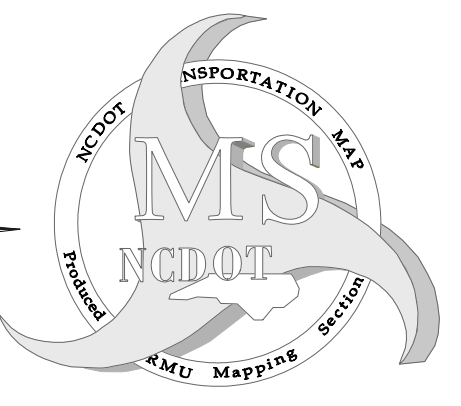
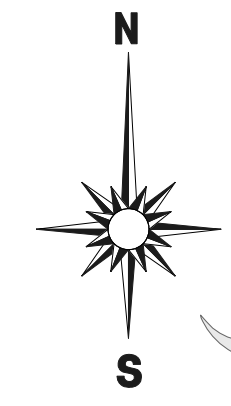
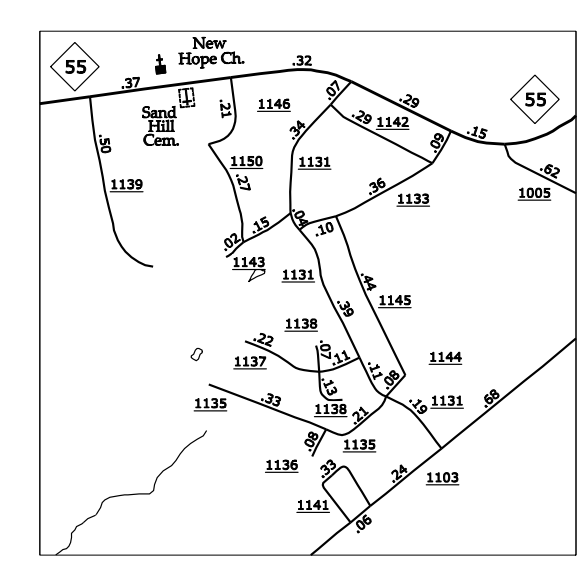
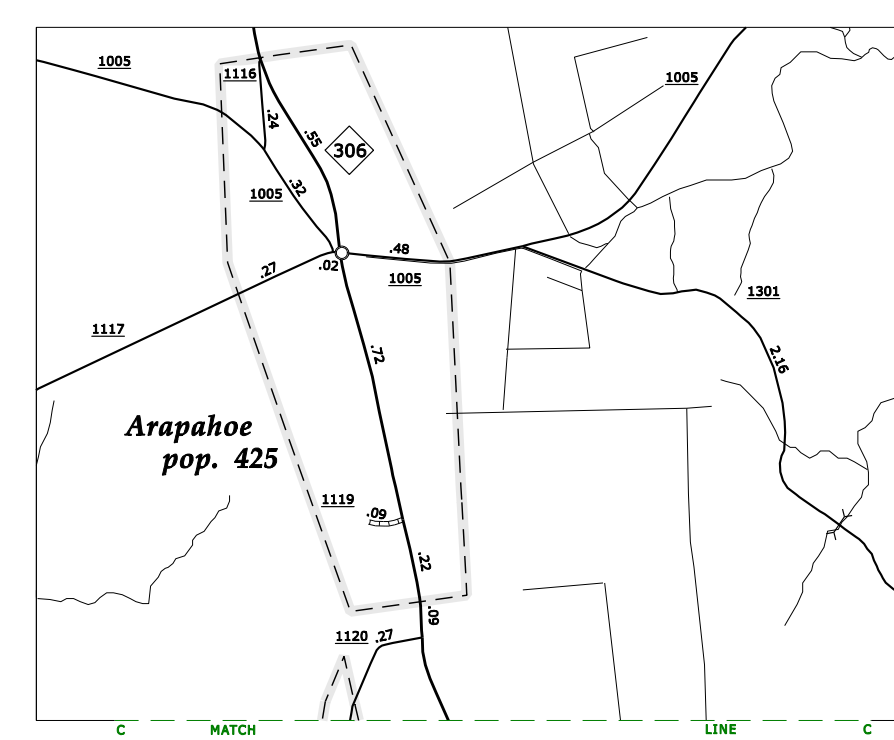
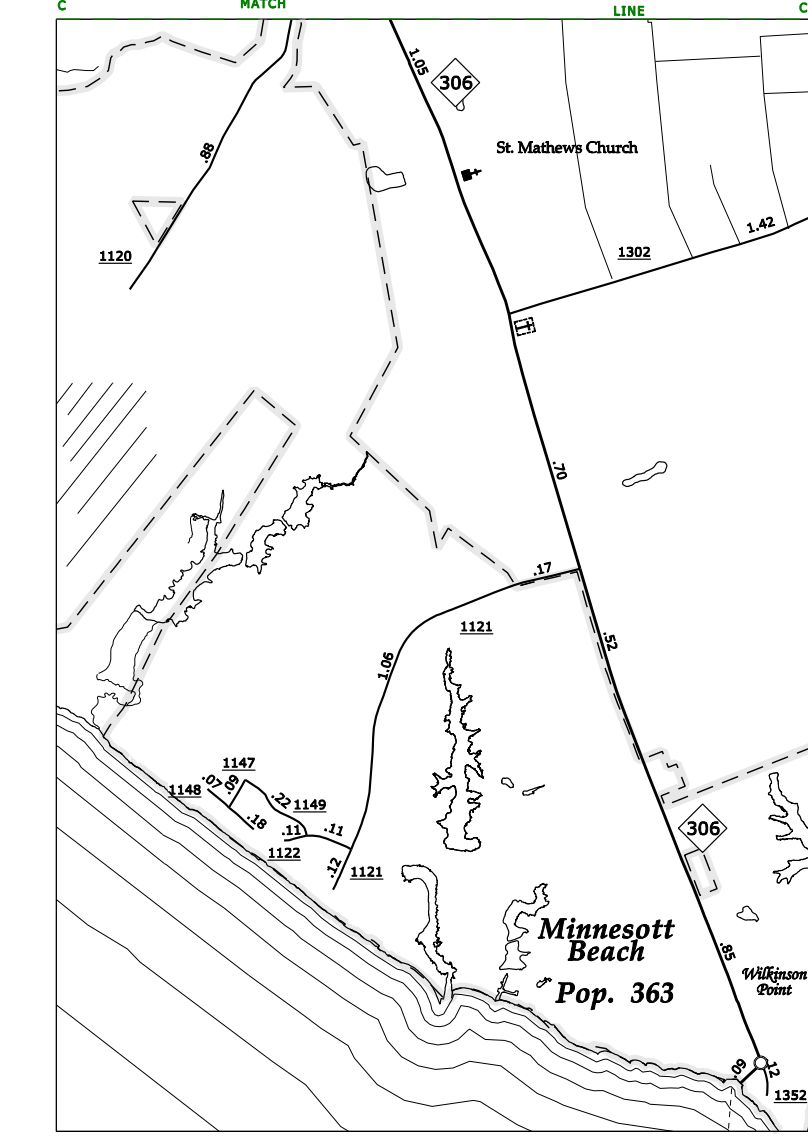
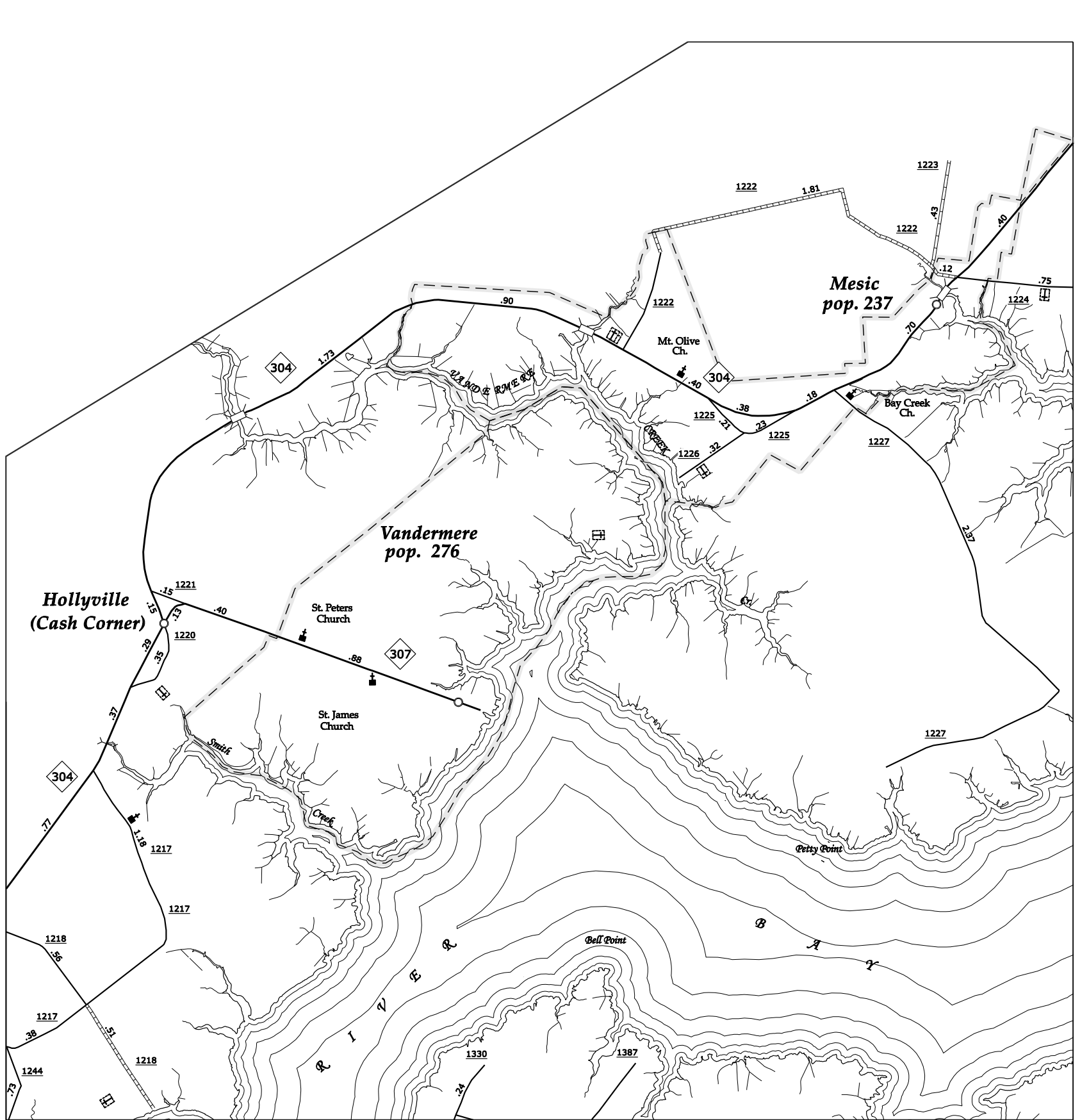
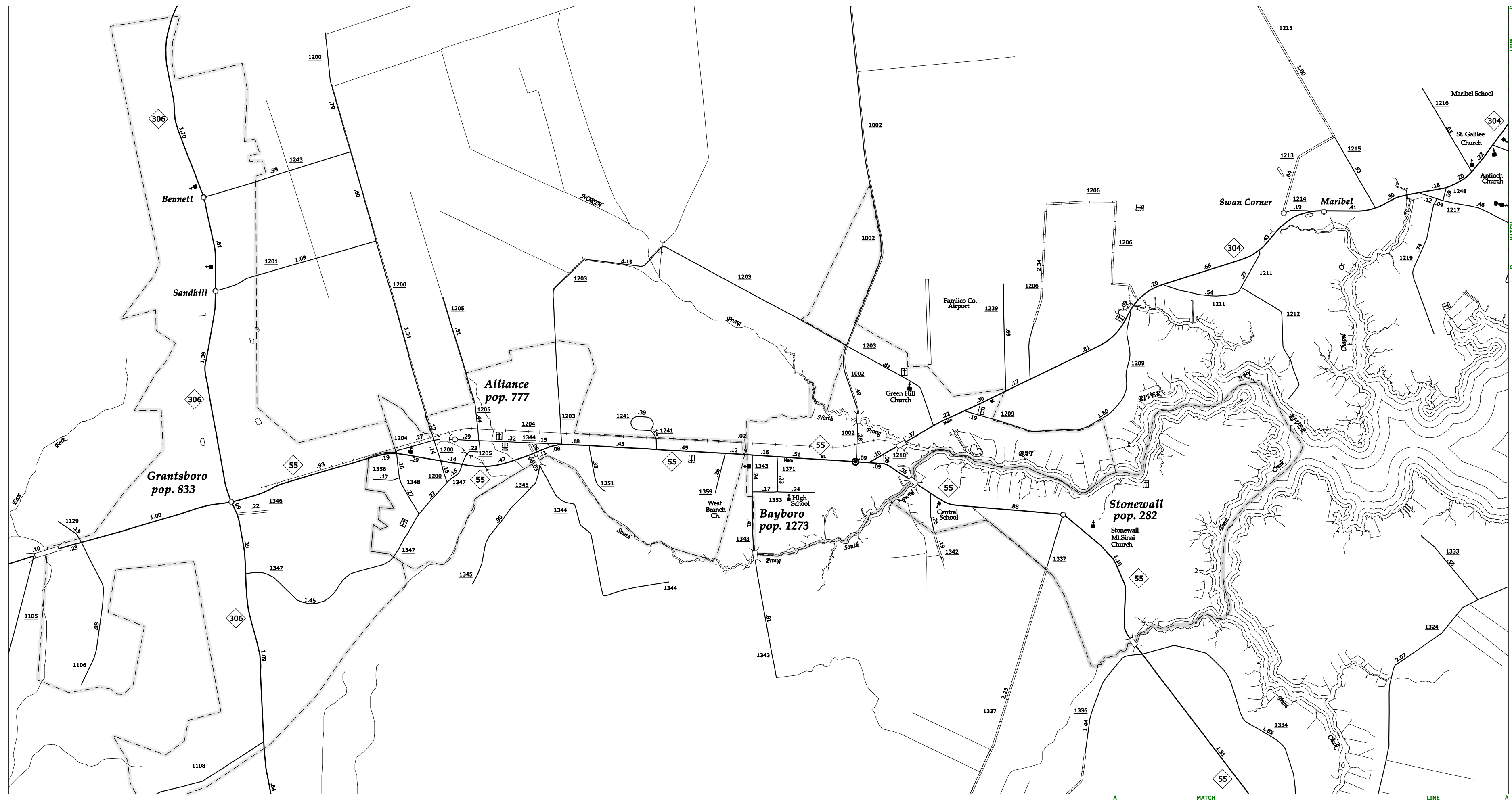


Disclaimer: The SRMU's goal is to provide the most accurate information as possible. The magnitude of the data prevents any guarantee of accuracy or completeness. If you find any information that is incorrect, please send your request to the SRMU Section.

COPIES OF THIS MAP ARE AVAILABLE TO THE PUBLIC AT A NOMINAL COST.

N.C. DEPARTMENT OF TRANSPORTATION
 STATE ROAD MANAGEMENT UNIT
 301 CAPE SANDBURG CT.
 RALEIGH, N.C. 27603

PAMLICO SUP 1



ENLARGED MUNICIPAL AND SUBURBAN AREAS
PAMLICO COUNTY
 NORTH CAROLINA

PREPARED BY THE
 NORTH CAROLINA DEPARTMENT OF TRANSPORTATION
 STATE ROAD MANAGEMENT UNIT - MAPPING SECTION
 IN COOPERATION WITH THE
 U.S. DEPARTMENT OF TRANSPORTATION
 FEDERAL HIGHWAY ADMINISTRATION

