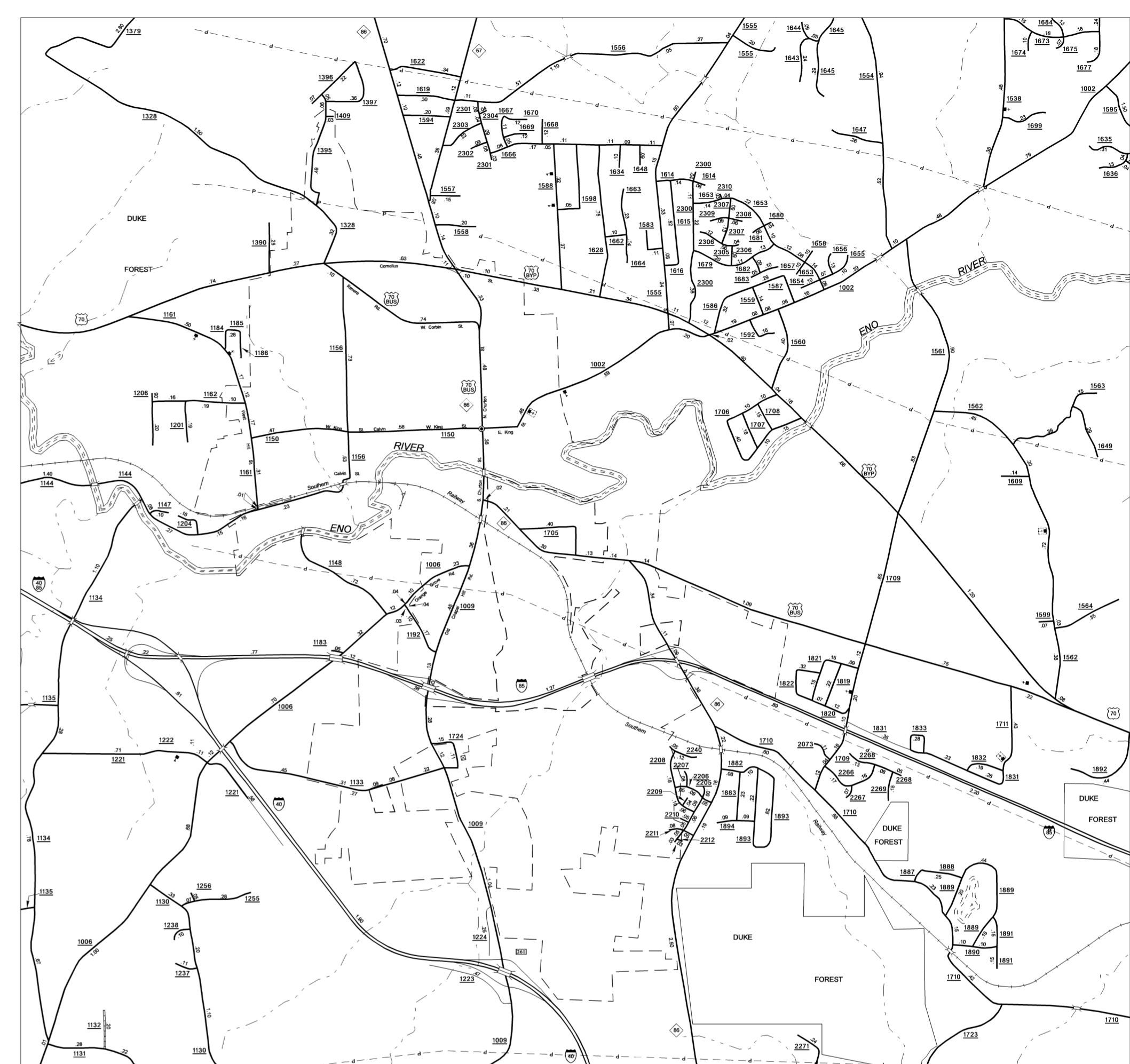
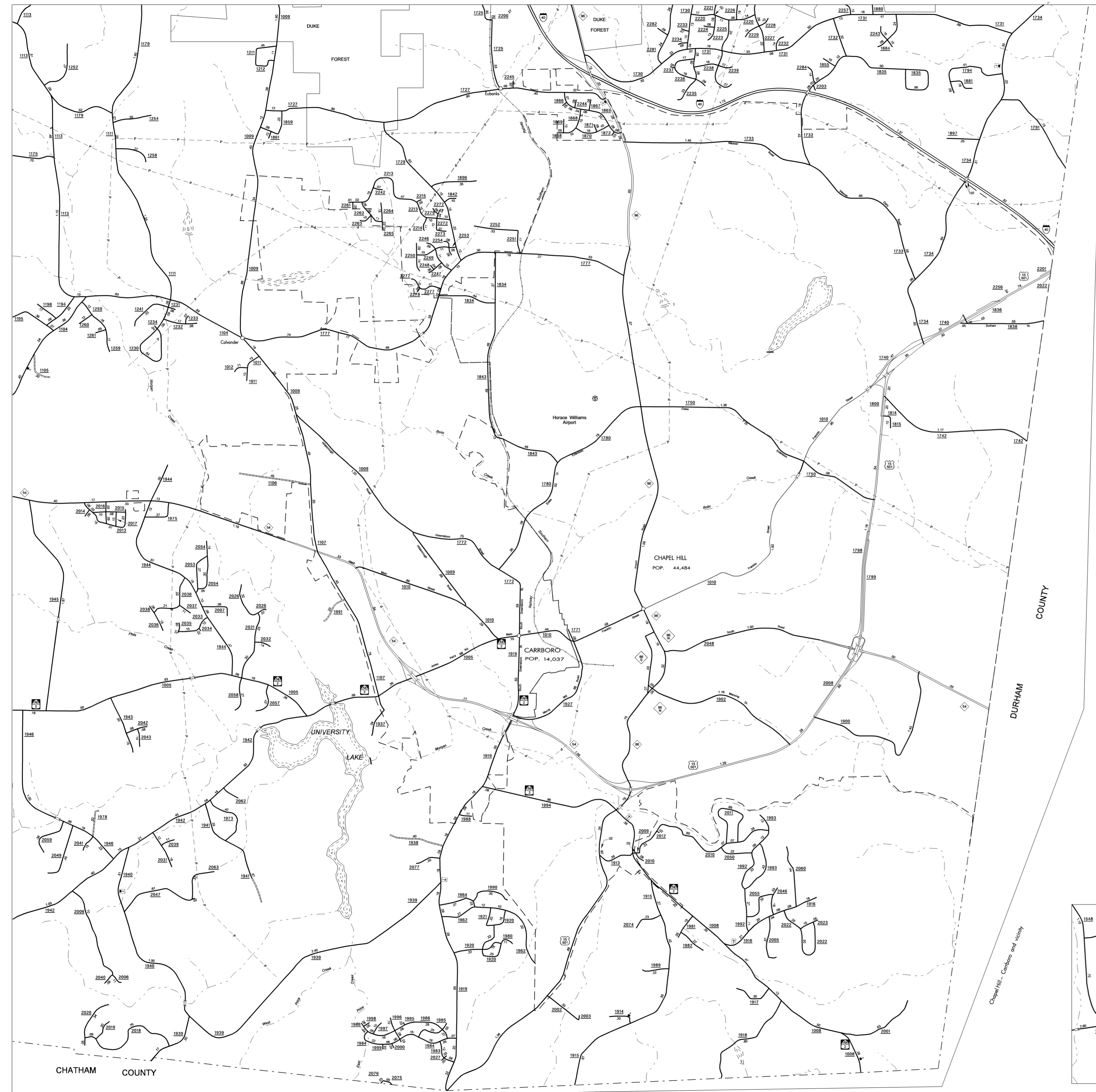


COPIES OF THIS MAP ARE AVAILABLE TO THE PUBLIC AT A NOMINAL COST. ADDRESS: N.C. DEPARTMENT OF TRANSPORTATION, 3401 CAPE SANDHURST CT., RALEIGH, N.C. 27610

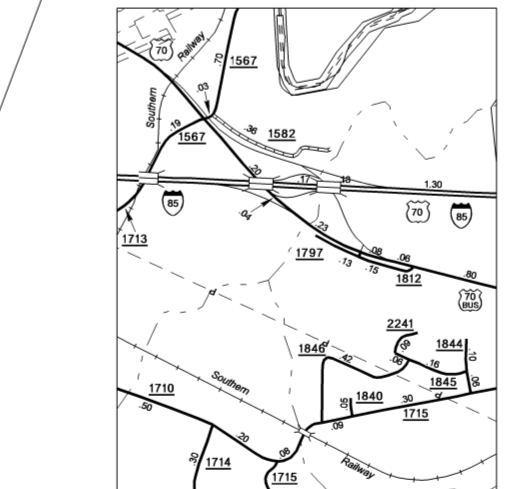
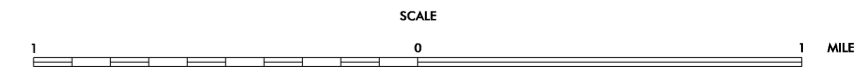
REVISED  
 6/27/62 R.L.N.  
 11/16/62 R.L.N.  
 3/31/63 R.L.N.  
 8/27/63 R.L.N.  
 2/4/64 R.L.N.  
 5/12/64 R.L.N.  
 6/14/64 R.L.N.  
 7/12/64 R.L.N.  
 7/30/64 R.L.N.  
 11/3/65 R.L.N.  
 7/19/66 TRP  
 11/2/66 TRP  
 10/16/67 TRP  
 5/27/68 TRP  
 10/19/69 MG



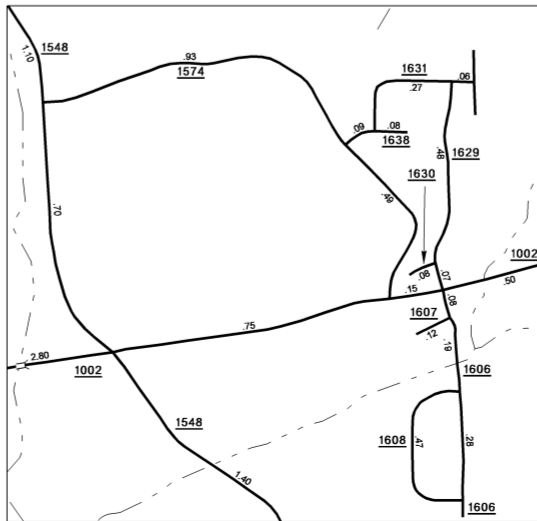
Hillborough and vicinity



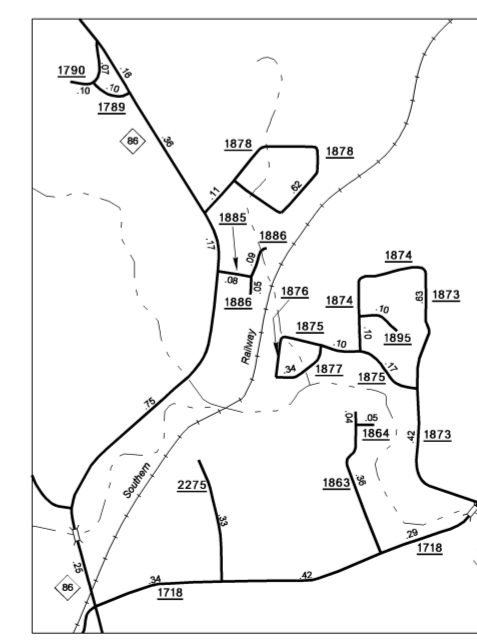
ENLARGED MUNICIPAL AND SUBURBAN AREAS  
**ORANGE COUNTY**  
 NORTH CAROLINA  
 PREPARED BY THE  
 NORTH CAROLINA DEPARTMENT OF TRANSPORTATION  
 STATE ROAD MAINTENANCE UNIT - MAPPING AND INFORMATION SECTION  
 IN COOPERATION WITH THE  
 U.S. DEPARTMENT OF TRANSPORTATION  
 FEDERAL HIGHWAY ADMINISTRATION



Inset 3



Inset 2



Inset 1