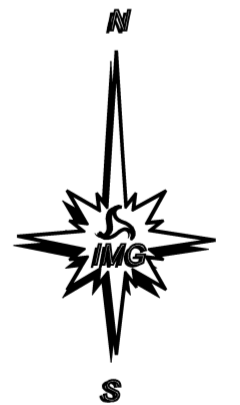
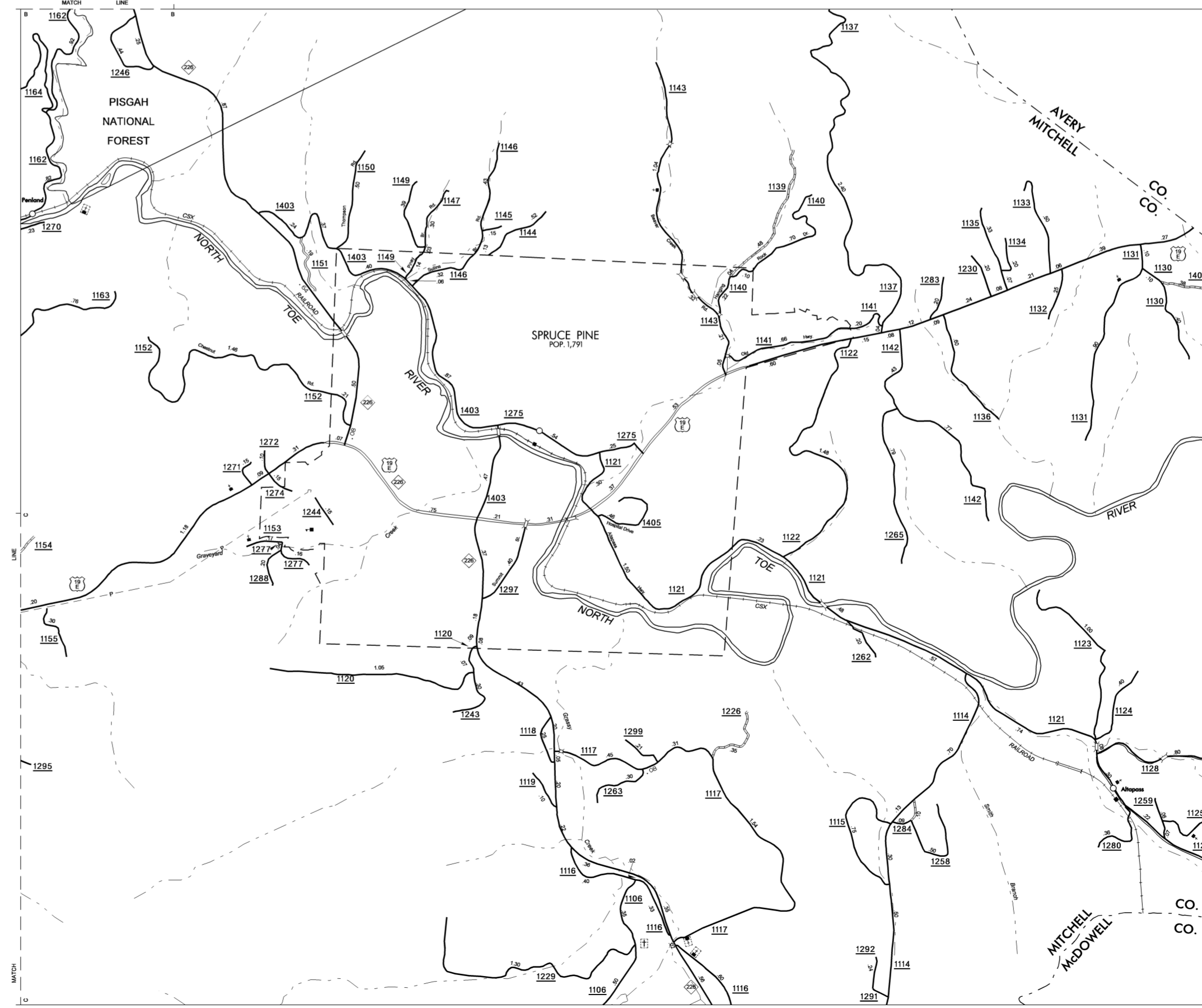
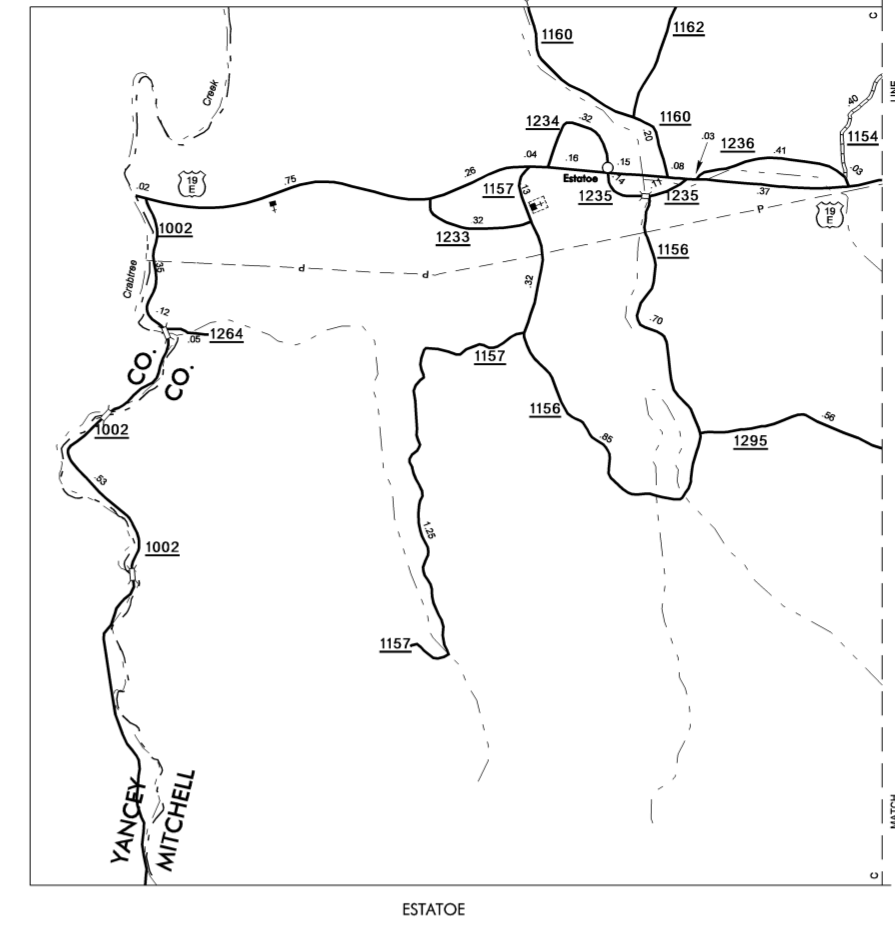
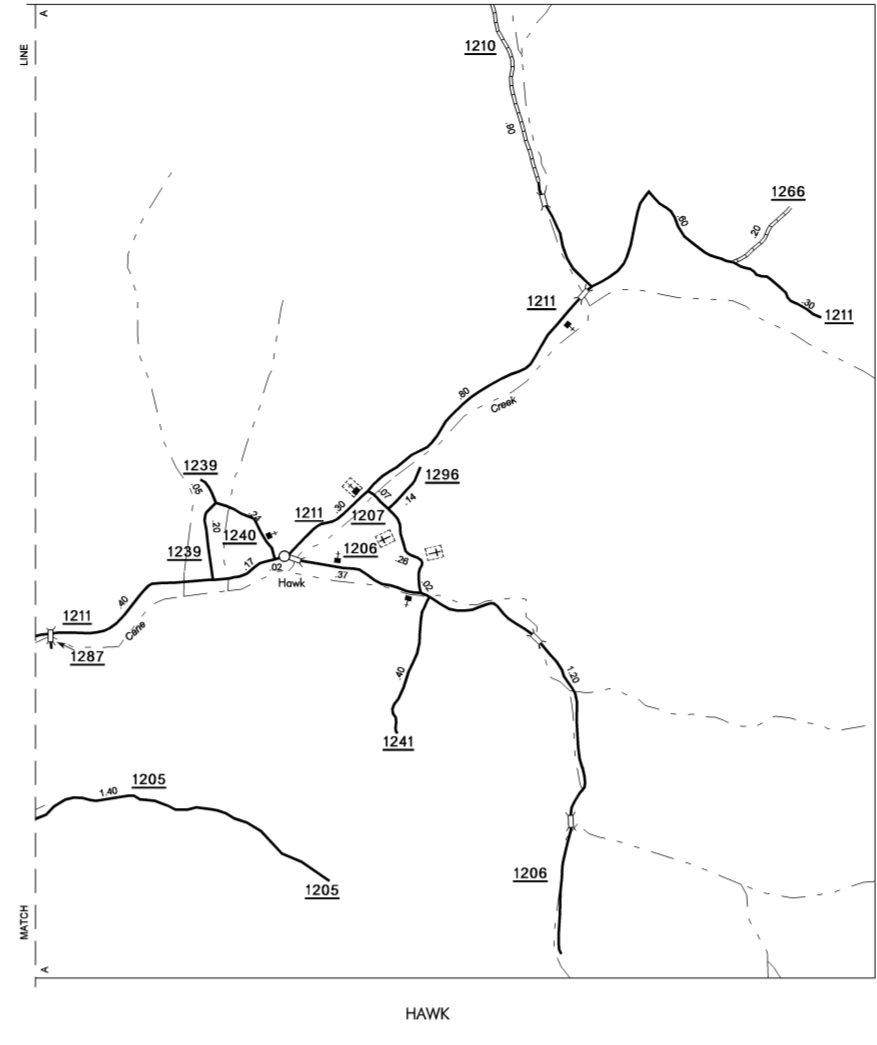
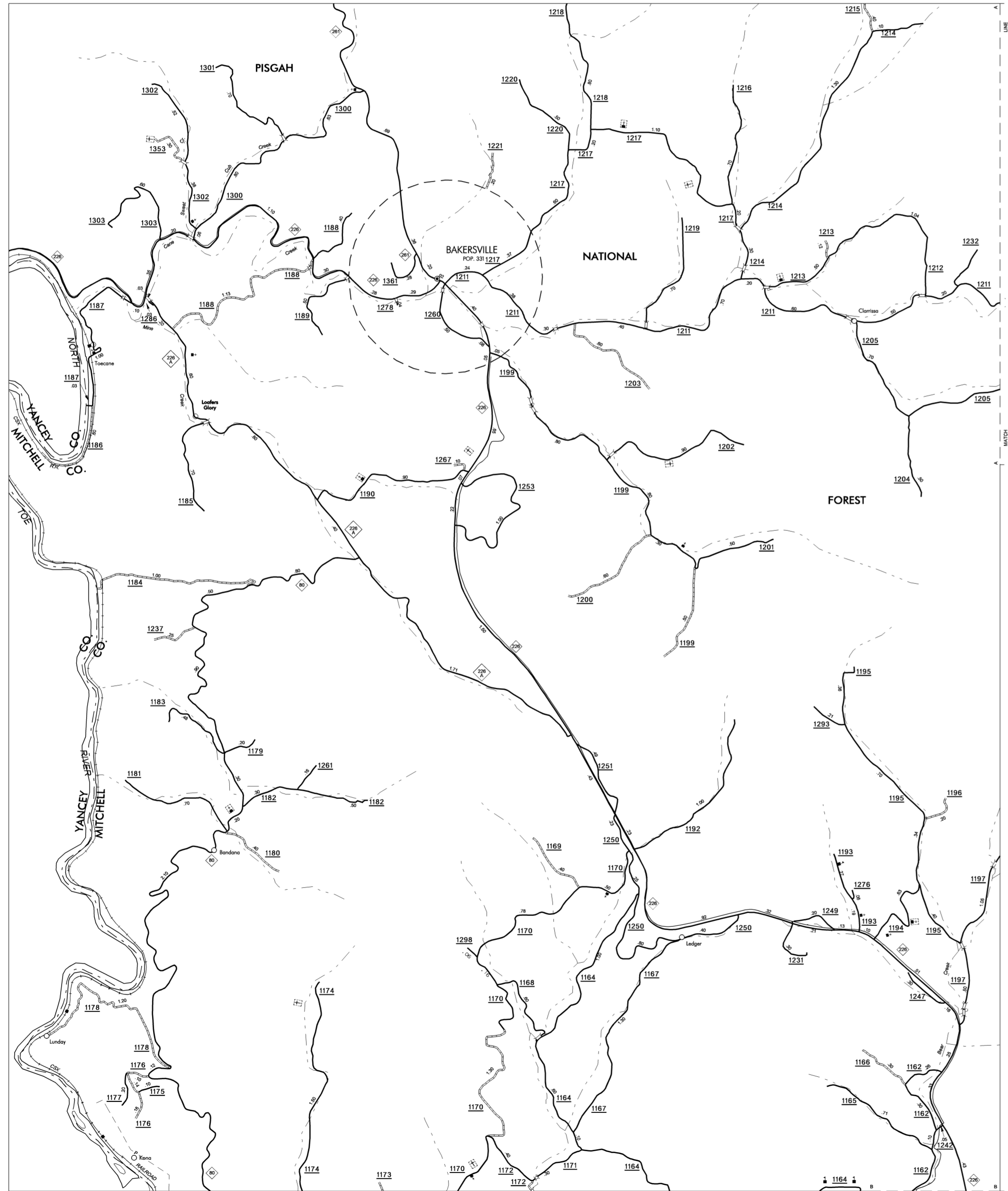


COPIES OF THIS MAP ARE AVAILABLE TO THE PUBLIC AT A NOMINAL COST.

REVISOR
 10/11/07 MG
 6/12/08 MG
 2/24/09 MG
 1/26/09 MG
 10/19/09 MG



ENLARGED MUNICIPAL AND SUBURBAN AREAS

MITCHELL COUNTY

NORTH CAROLINA

PREPARED BY THE
 NORTH CAROLINA DEPARTMENT OF TRANSPORTATION
 STATE ROAD MAINTENANCE UNIT - MAPPING AND INFORMATION SECTION

IN COOPERATION WITH THE
 U.S. DEPARTMENT OF TRANSPORTATION
 FEDERAL HIGHWAY ADMINISTRATION

