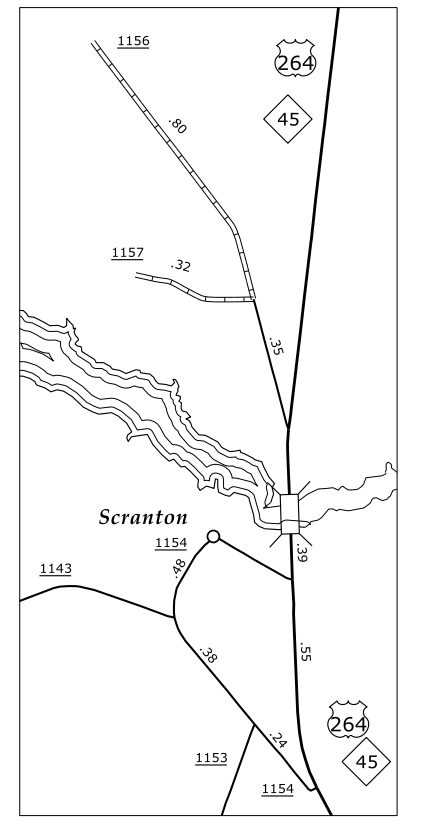
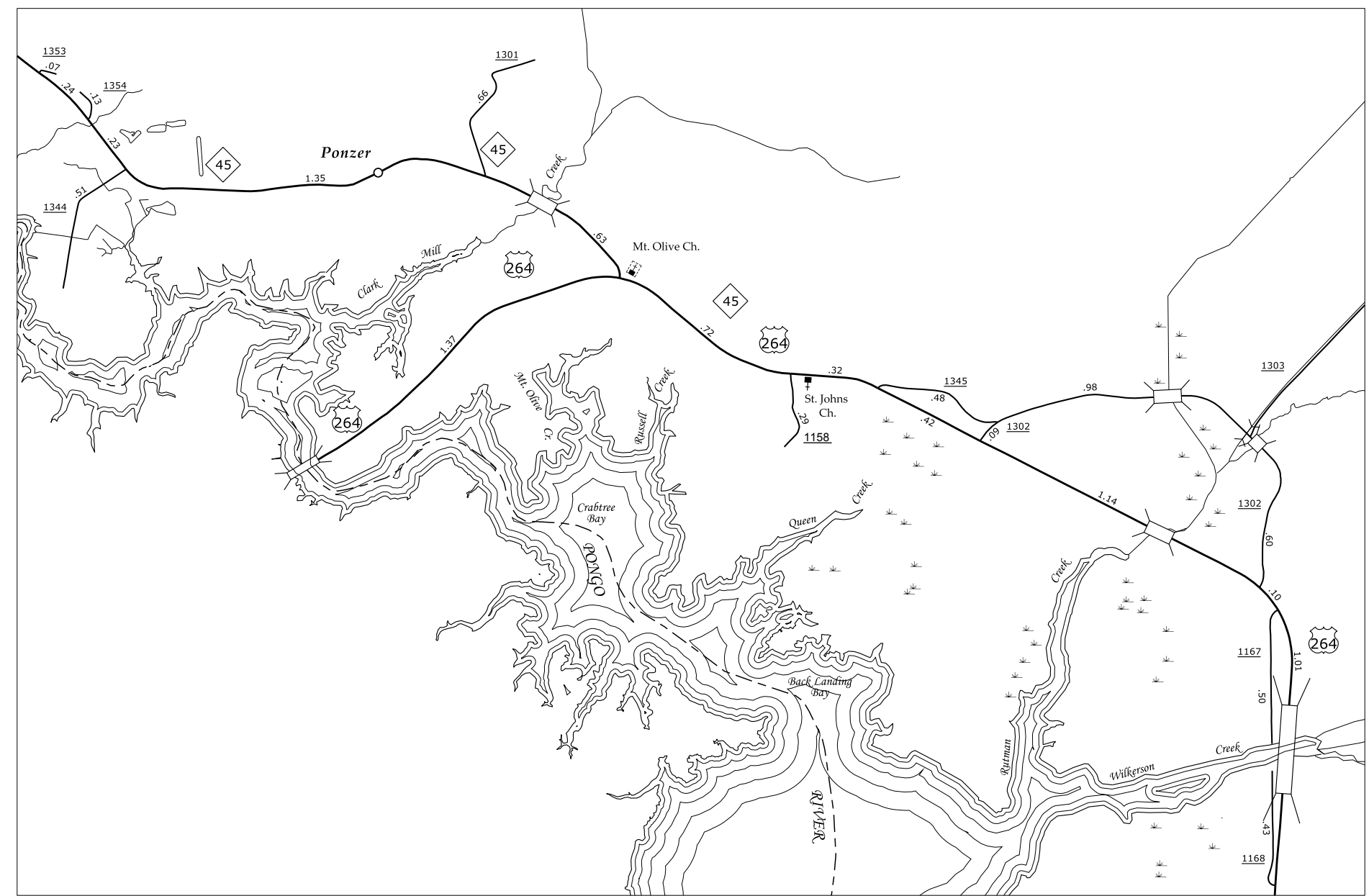
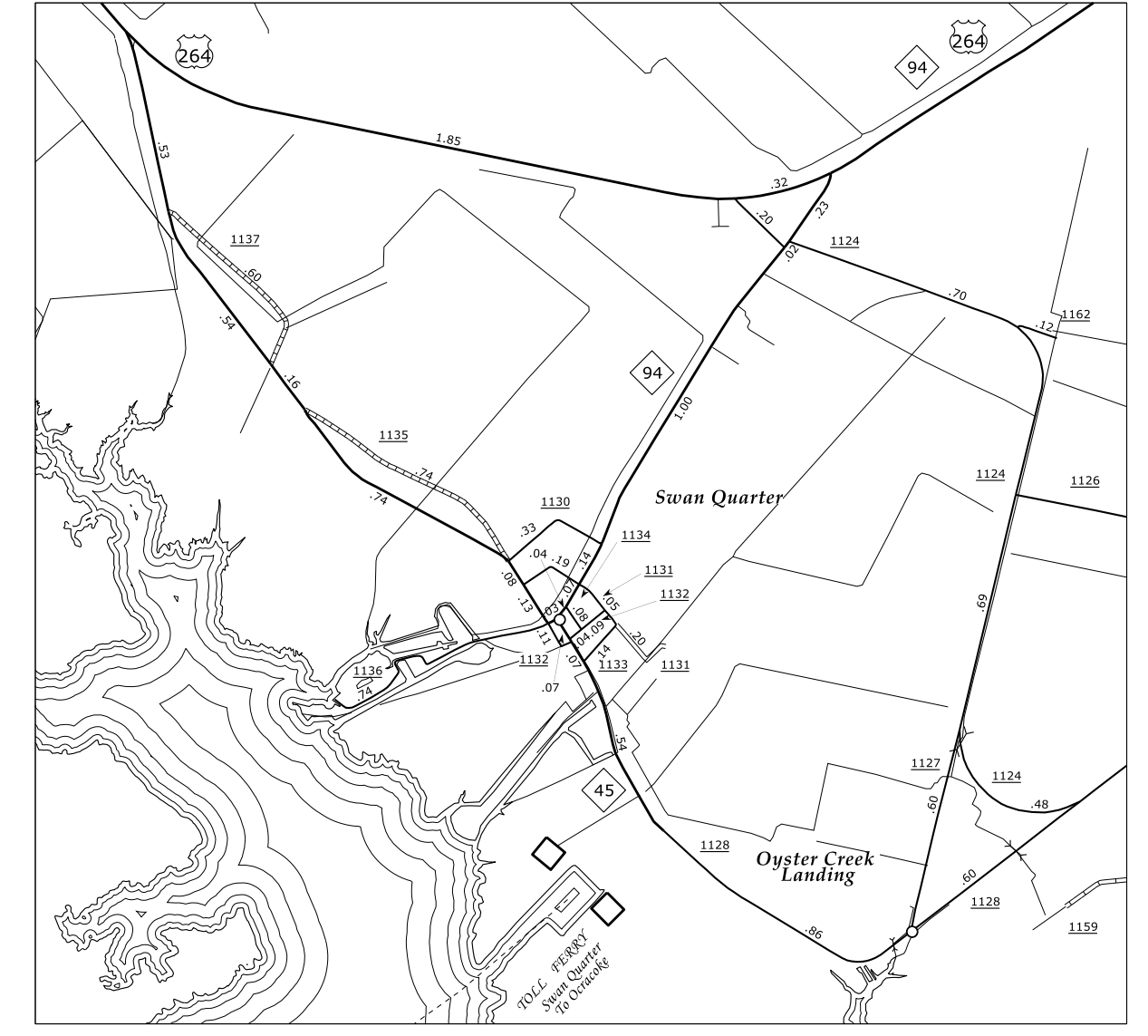


Disclaimer: The SRMU's goal is to provide the most accurate information as possible. The magnitude of the data prevents any guarantee of accuracy or completeness. If you find any information that is incorrect, please send your request to the SRMU Mapping Section.

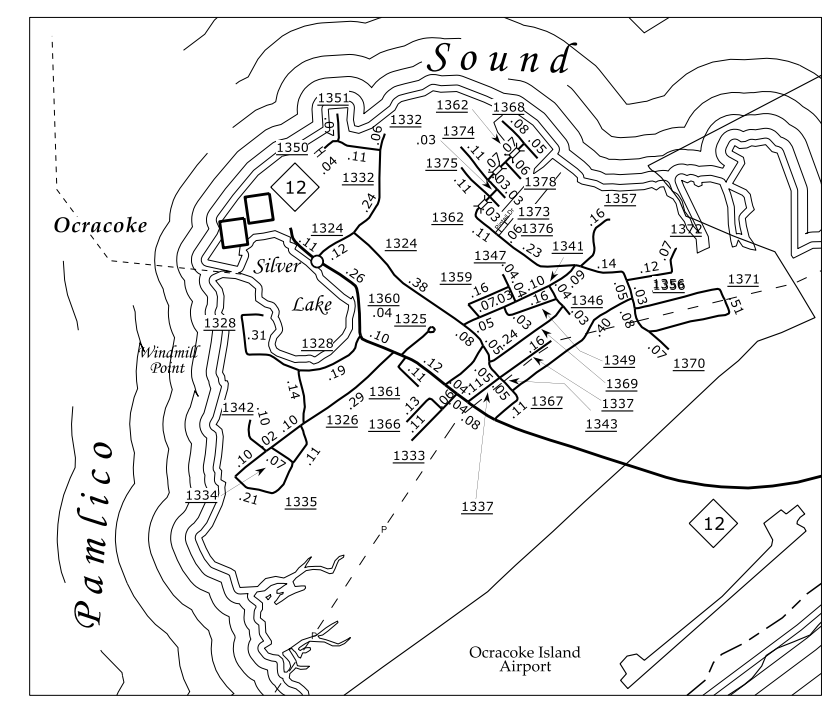


Scranton

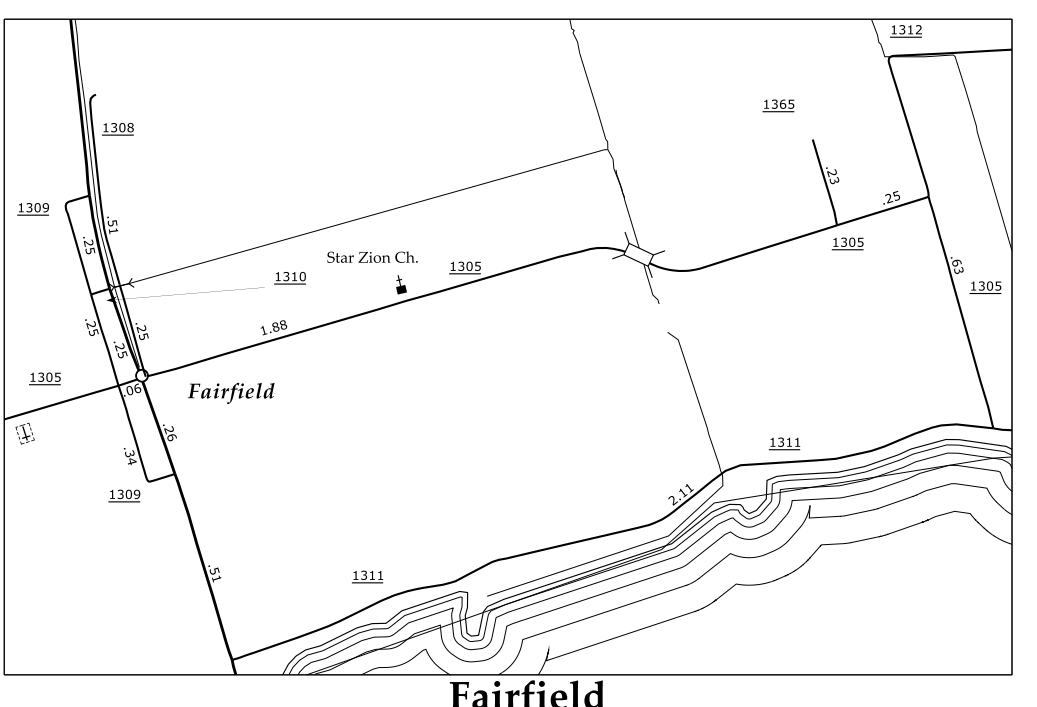
Ponzer



Swan Quarter and Oyster Creek Landing

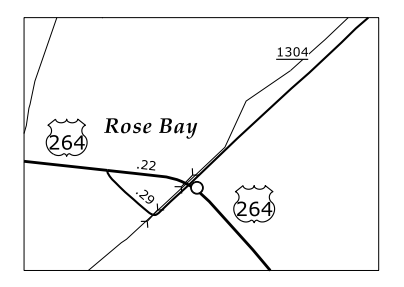


Ocracoke

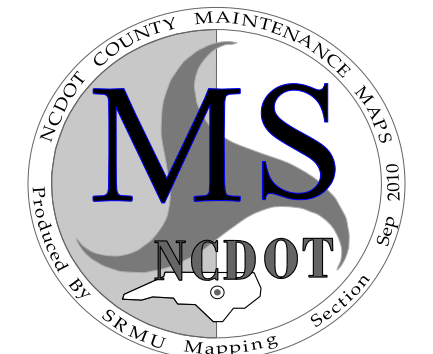
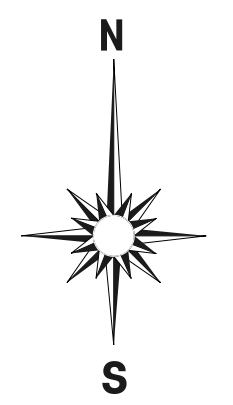


Fairfield

Lake Landing, Amity, Engelhard, and Middleton

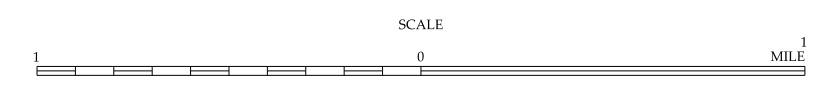


Rose Bay



ENLARGED MUNICIPAL AND SUBURBAN AREAS
HYDE COUNTY
 NORTH CAROLINA

PREPARED BY THE
 NORTH CAROLINA DEPARTMENT OF TRANSPORTATION
 STATE ROAD MAINTENANCE UNIT - MAPPING SECTION
 IN COOPERATION WITH THE
 U.S. DEPARTMENT OF TRANSPORTATION
 FEDERAL HIGHWAY ADMINISTRATION



10,000 FOOT GRID BASED ON NORTH CAROLINA STATE PLANE COORDINATE SYSTEM
 NAD 83 FEET
 LAMBERT CONFORMAL CONIC

N.C. DEPARTMENT OF TRANSPORTATION
 STATE ROAD MAINTENANCE UNIT
 3001 CARE SANDBURG CT.
 RALEIGH, N.C. 27610

SUP1