

COUNTY

ORANGE

COUNTY

WAKE

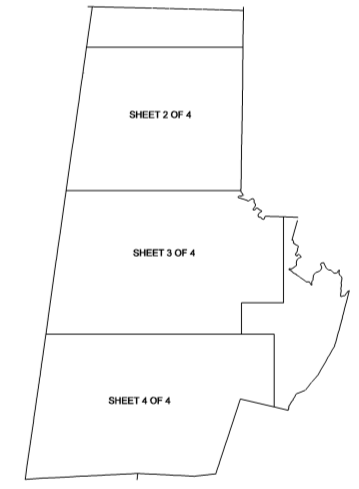
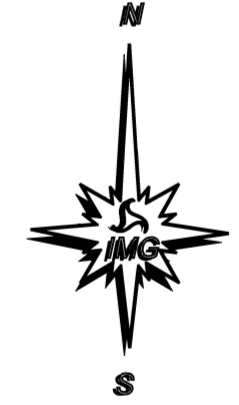
CHATHAM

COUNTY

CHAPEL HILL
POP. 24,604
ORANGE 53,326
DURHAM 2,290

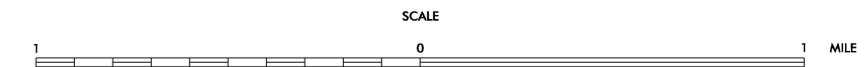
Parkwood
(Imp. 3)
POP. 42,643

B. EVERET
JORDAN
LAKE



KEY TO SUPPLEMENT SHEETS

ENLARGED MUNICIPAL AND SUBURBAN AREAS
DURHAM COUNTY
NORTH CAROLINA
PREPARED BY THE
NORTH CAROLINA DEPARTMENT OF TRANSPORTATION
STATE ROAD MAINTENANCE UNIT - MAPPING AND INFORMATION SECTION
IN COOPERATION WITH THE
U.S. DEPARTMENT OF TRANSPORTATION
FEDERAL HIGHWAY ADMINISTRATION



COPIES OF THIS MAP ARE AVAILABLE
TO THE PUBLIC AT A NOMINAL COST.
ADDRESS:
N.C. DEPARTMENT OF TRANSPORTATION
STATE ROAD MAINTENANCE UNIT
3401 CARR SANDBARCT.
RALEIGH, N.C. 27610

REVISED
1/7/69 MEM
10/7/69 MEM
10/29/69 MEM
2/21/70 MEM
2/23/70 MEM