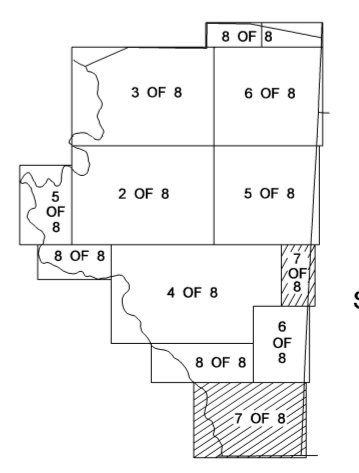
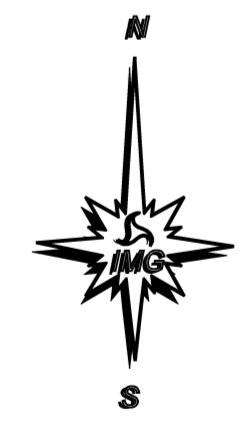
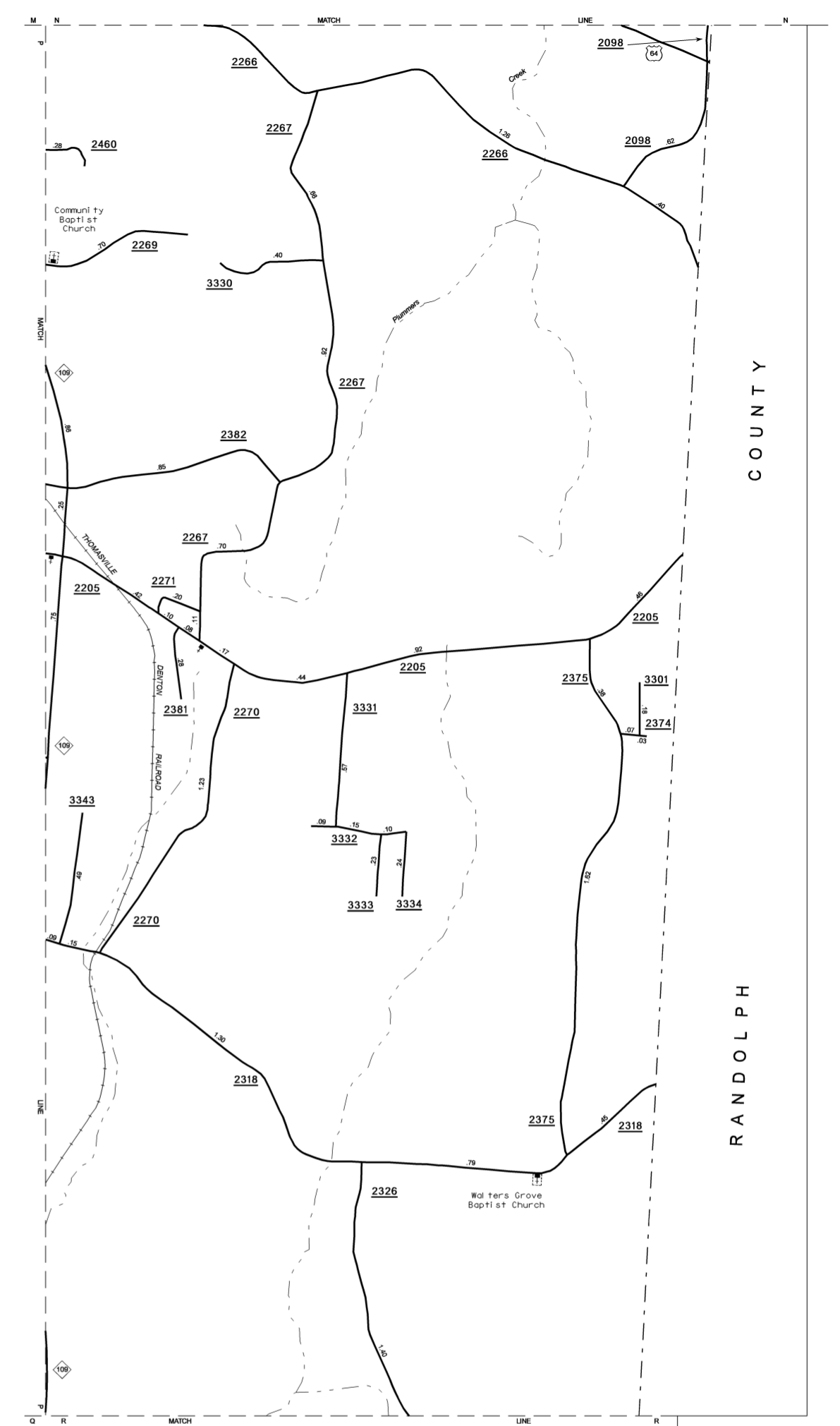
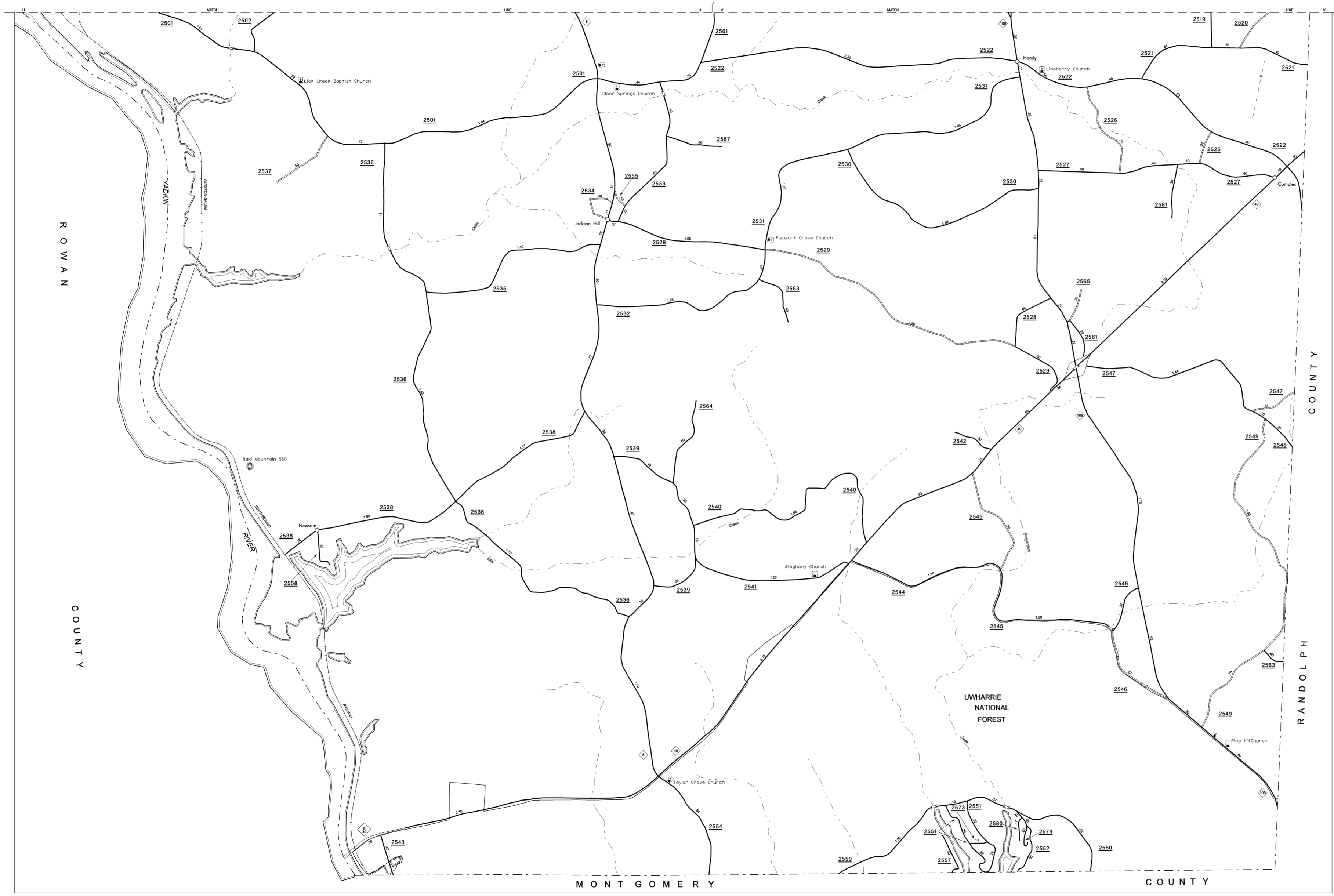


COPIES OF THIS MAP ARE AVAILABLE TO THE PUBLIC AT A NOMINAL COST. ADDRESS: N.C. DEPARTMENT OF TRANSPORTATION STATE ROAD MAINTENANCE UNIT - MAPPING AND INFORMATION SECTION 3401 CARL SANDHURST CT. RALEIGH, N.C. 27610

REVISED:
 9/30/08 RLN
 10/30/08 RLN
 2/8/09 RLN
 4/16/09 SLM
 2/3/10 SM

SUP. 6

DAVIDSON



ENLARGED MUNICIPAL AND SUBURBAN AREAS

DAVIDSON COUNTY

NORTH CAROLINA

PREPARED BY THE
 NORTH CAROLINA DEPARTMENT OF TRANSPORTATION
 STATE ROAD MAINTENANCE UNIT - MAPPING AND INFORMATION SECTION

IN COOPERATION WITH THE
 U.S. DEPARTMENT OF TRANSPORTATION
 FEDERAL HIGHWAY ADMINISTRATION

