

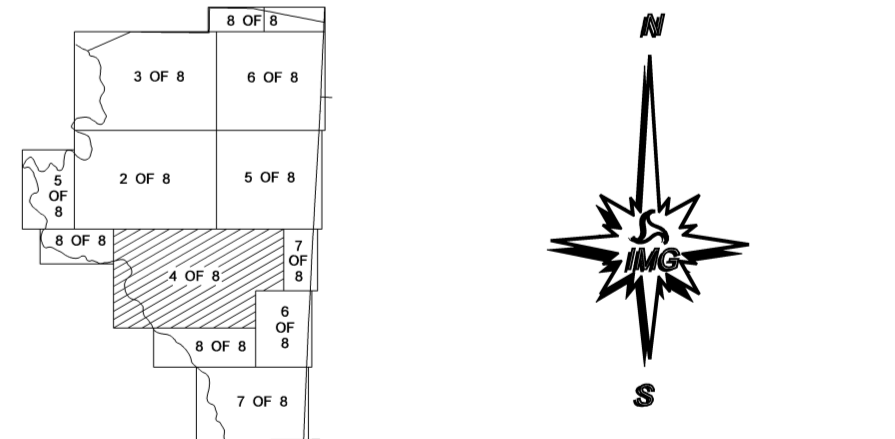
DAVIDSON SUP. 3

COPIES OF THIS MAP ARE AVAILABLE TO THE PUBLIC AT A NOMINAL COST.

REVISIONS

10/30/08	RLN
10/30/08	RLN
2/9/09	RLN
4/6/10	SLM
2/3/10	SLM
2/11/10	SLM
3/25/10	SLM

N.C. DEPARTMENT OF TRANSPORTATION
3401 CAPE SANDHURST CT.
RALEIGH, N.C. 27610



ENLARGED MUNICIPAL AND SUBURBAN AREAS

DAVIDSON COUNTY

NORTH CAROLINA

PREPARED BY THE
NORTH CAROLINA DEPARTMENT OF TRANSPORTATION
STATE ROAD MAINTENANCE UNIT - MAPPING AND INFORMATION SECTION

IN COOPERATION WITH THE
U.S. DEPARTMENT OF TRANSPORTATION
FEDERAL HIGHWAY ADMINISTRATION

SCALE
0 1 MILE

DAVIDSON COUNTY DISTRICT 1 NORTH CAROLINA SHEET 4 OF 8