

Disclaimers: The SRMU's goal is to provide the most accurate information as possible. The magnitude of the data prevents any guarantee of accuracy or completeness. If you find any information that is incorrect, please send your request to the SRMU Section.

ADDRESS: N.C. DEPARTMENT OF TRANSPORTATION, 3401 CAREY CENTER DRIVE, RALEIGH, N.C. 27610
 REVISED:

COPIES OF THIS MAP ARE AVAILABLE.

CURRITUCK

10,000 FOOT GRID BASED ON NORTH CAROLINA PLANE COORDINATE SYSTEM
 POLYCONIC PROJECTION

SHEET 1 OF 2

DIVISION 1 DISTRICT 1 CURRITUCK COUNTY NORTH CAROLINA

U.S. DEPARTMENT OF TRANSPORTATION
 STATE ROAD MAINTENANCE UNIT - MAPPING SECTION

IN COOPERATION WITH THE
 FEDERAL HIGHWAY ADMINISTRATION

NORTH CAROLINA DEPARTMENT OF TRANSPORTATION

PREPARED BY THE

CURRITUCK COUNTY

NORTH CAROLINA

STATE ROAD MAINTENANCE UNIT - MAPPING SECTION

IN COOPERATION WITH THE

FEDERAL HIGHWAY ADMINISTRATION

CURRITUCK COUNTY

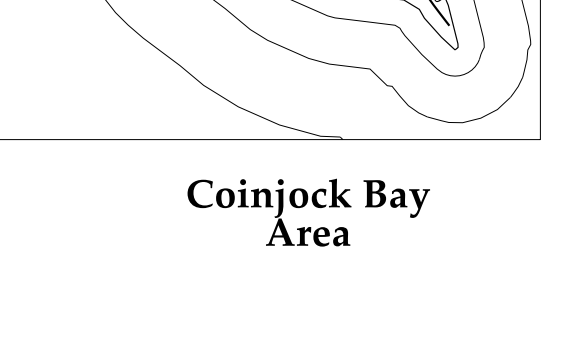
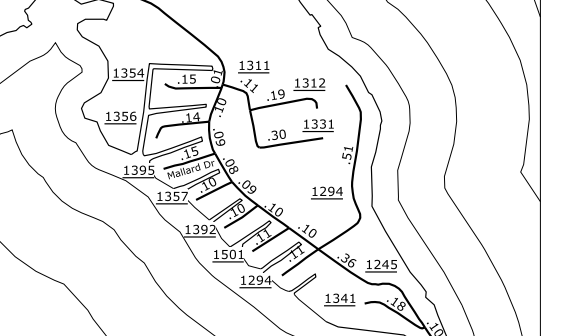
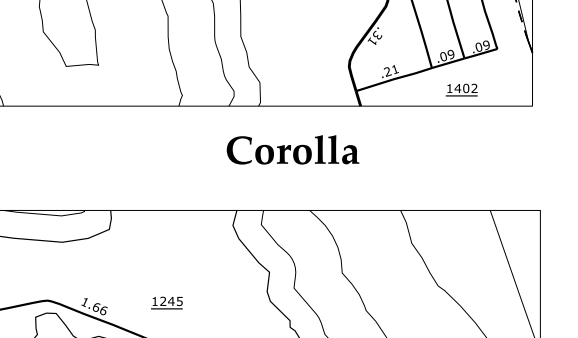
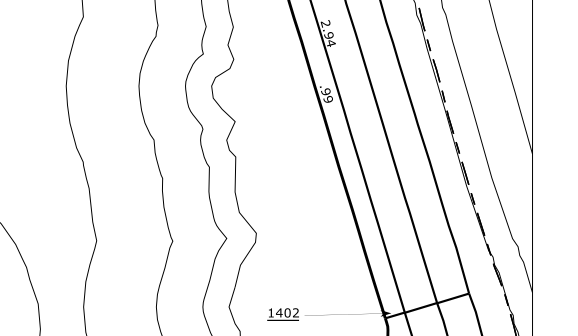
NORTH CAROLINA

DIVISION 1 DISTRICT 1

SHEET 1 OF 2

POLYCONIC PROJECTION

- LEGEND**
- PRIMITIVE OR UNIMPROVED ROAD
 - GRADED AND DRAINED ROAD
 - SOIL GRAVEL OR STONE SURFACED ROAD
 - HARD SURFACED ROAD
 - 4 LANE UNDIVIDED HIGHWAY
 - DIVIDED HIGHWAY W/ FRONTAGE ROADS
 - FULL CONTROL ACCESS
 - NON-SYSTEM ROAD
 - PROJECTED LOCATION
 - INTERCHANGE DISTANCE
 - TRAFFIC CIRCLE
 - DETAILED HIGHWAY INTERCHANGE
 - DRAW SPAN ON BRIDGE
 - HIGHWAY TUNNEL
 - FORD
 - INTERSTATE HIGHWAY
 - U.S. NUMBERED HIGHWAY
 - N.C. NUMBERED HIGHWAY
 - U.S. NUMBERED BICYCLE ROUTE
 - N.C. NUMBERED BICYCLE ROUTE
 - INTERSTATE INTERCHANGE NUMBER
 - SECONDARY ROAD NUMBER
 - CABLE
 - RAILROAD, ANY NUMBER OF TRACKS USED BY SINGLE OPERATING COMPANY
 - RAILROAD ANY NUMBER OF TRACKS USED BY MORE THAN ONE OPERATING COMPANY ON SAME OR ADJACENT
 - RAILROAD STATION
 - GRADE CROSSING
 - RAILROAD TUNNEL
 - UNDERPASS
 - OVERPASS
 - INSET AREA
 - U.E.R. URBAN EXTENSION LINE
 - N.F.R. FEDERAL OWNED OR OPERATED BOUNDARY
 - R.P.B. RESERVATION OR PARK BOUNDARY
 - S.E.B. STATE OWNED OR OPERATED BOUNDARY
 - STATE LINE
 - COUNTY LINE
 - CITY LIMIT
 - FERRY ROUTE
 - CANAL
 - NARROW CREEK OR STREAM
 - WIDE RIVER OR CREEK
 - RESERVOIR, POND OR LAKE W/ ISLAND
 - DAM OR DAM WITH LOCK
 - WATERFALL
 - SWAMP
 - COMMUNITY TOWN OR CITY CENTER
 - COUNTY SEAT
 - SCHOOL
 - COLLEGE OR UNIVERSITY
 - HOSPITAL
 - CHURCH
 - CHURCH WITH CEMETERY
 - CEMETERY
 - PATROL STATION
 - CORRECTIONAL OR PENAL INSTN.
 - QUARRY
 - MINE OR PIT
 - HIGHWAY GARAGE OR MAINT. YARD
 - HIGHWAY DIV. OR DIST. OFFICE
 - WEIGHT STATION
 - MONUMENT-SMALL HISTORICAL SITE
 - LIGHTHOUSE
 - MOUNTAIN GAP
 - MOUNTAIN SUMMIT
 - GEODETIC MARKER
 - BEST AREA
 - COAST GUARD STATION
 - MILITARY AIRFIELD
 - COMMERCIAL OR MUNICIPAL FIELD
 - HANGAR ON FIELD
 - LANDING STRIP
 - MARKED AUXILIARY FIELD



CURRITUCK COUNTY
 NORTH CAROLINA
 PREPARED BY THE
 NORTH CAROLINA DEPARTMENT OF TRANSPORTATION
 STATE ROAD MAINTENANCE UNIT - MAPPING SECTION
 IN COOPERATION WITH THE
 U.S. DEPARTMENT OF TRANSPORTATION
 FEDERAL HIGHWAY ADMINISTRATION

DIVISION 1 DISTRICT 1 CURRITUCK COUNTY NORTH CAROLINA
 SHEET 1 OF 2