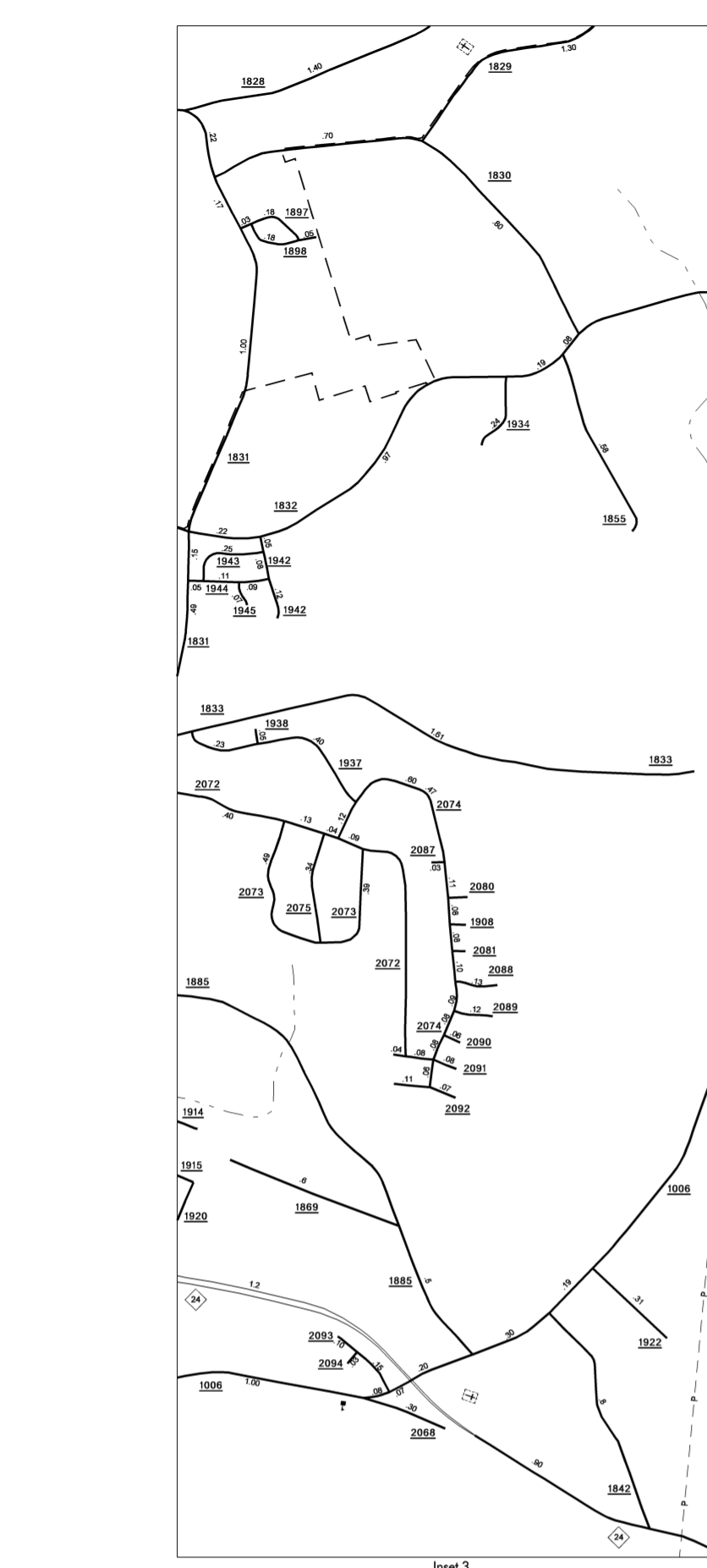
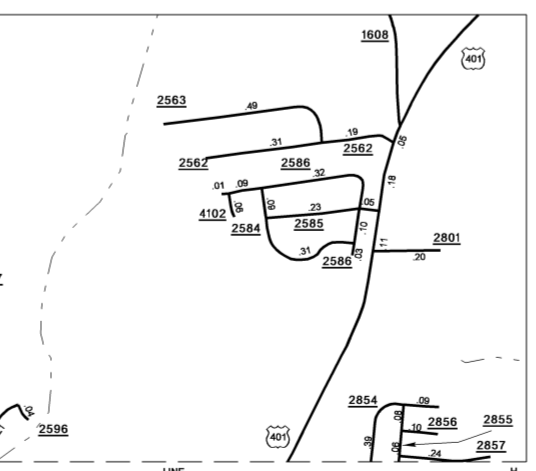
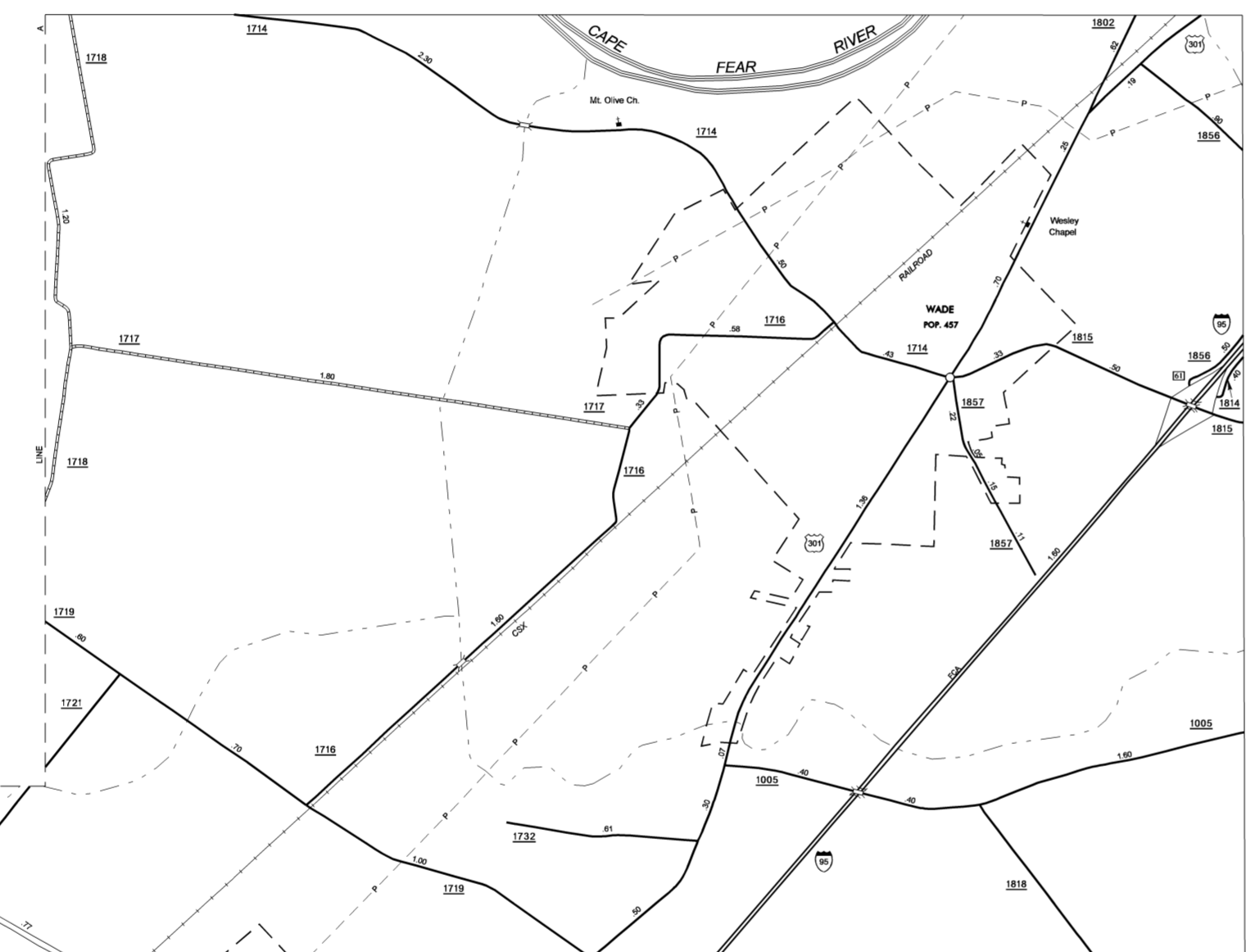


COPIES OF THIS MAP ARE AVAILABLE TO THE PUBLIC AT A NOMINAL COST. ADDRESS: N.C. DEPARTMENT OF TRANSPORTATION, 3401 CARY SANDHURST CT., FAYETTEVILLE, N.C. 27803

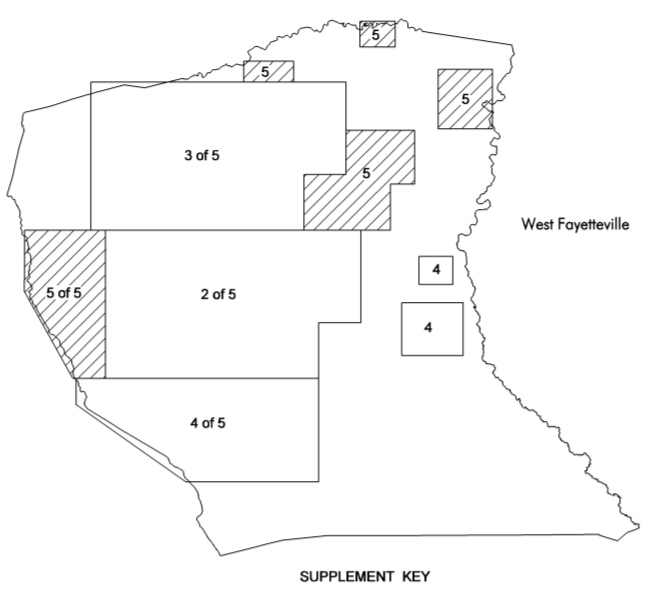
REVISED 07/18/05:JAM 11/09/05:JLM 12/14/05:JLM 1/25/10:SM



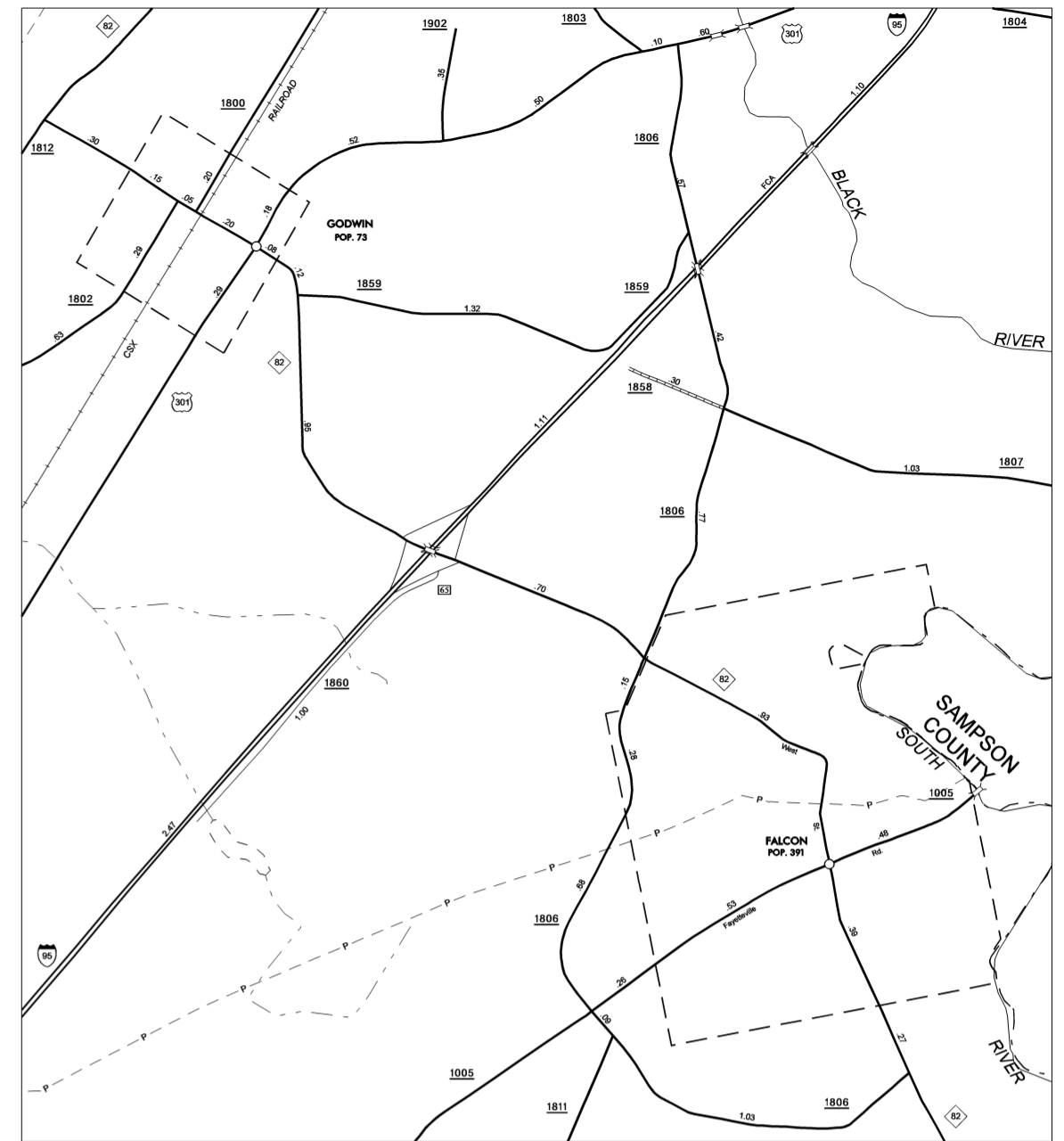
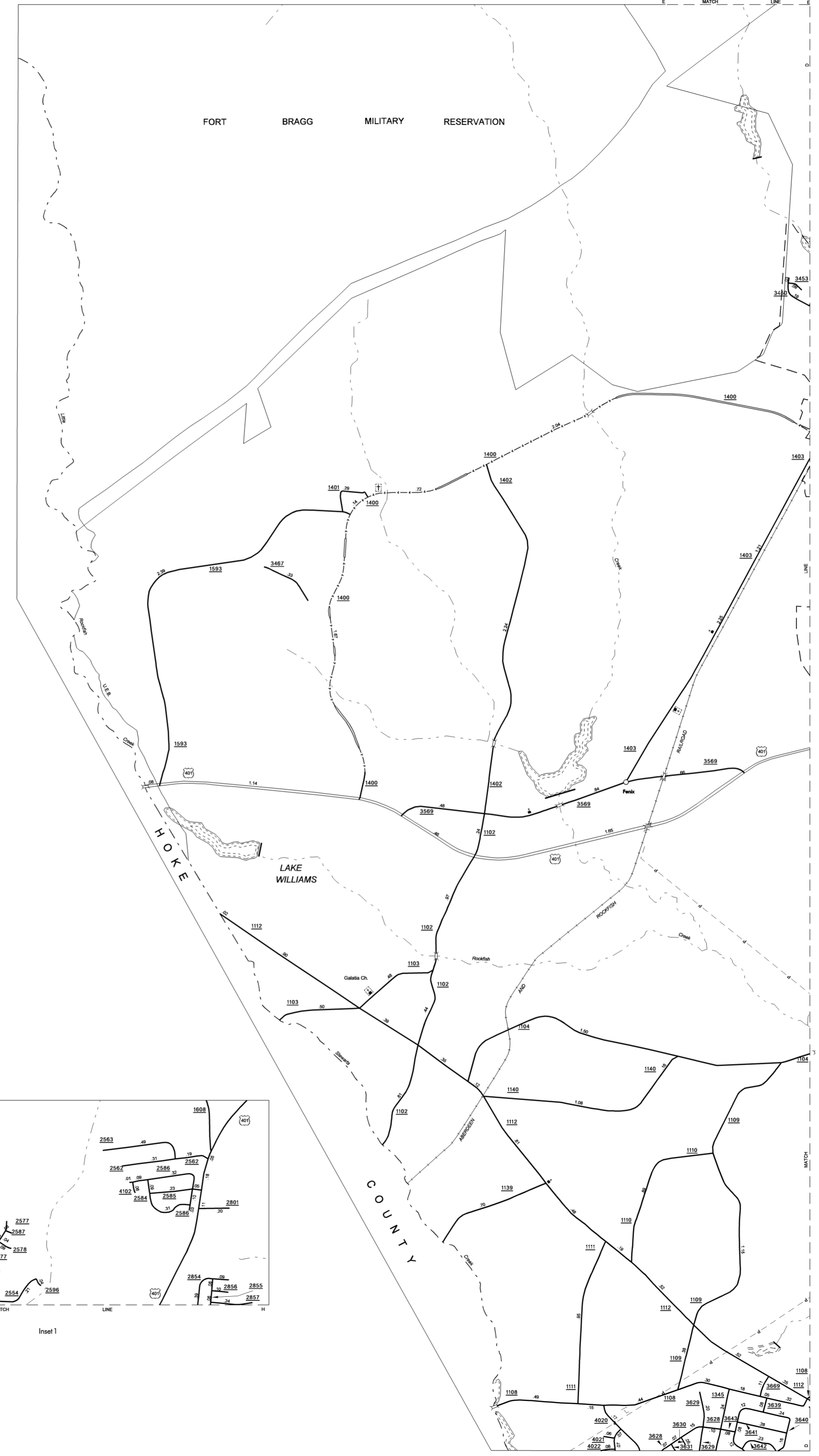
Inset 3



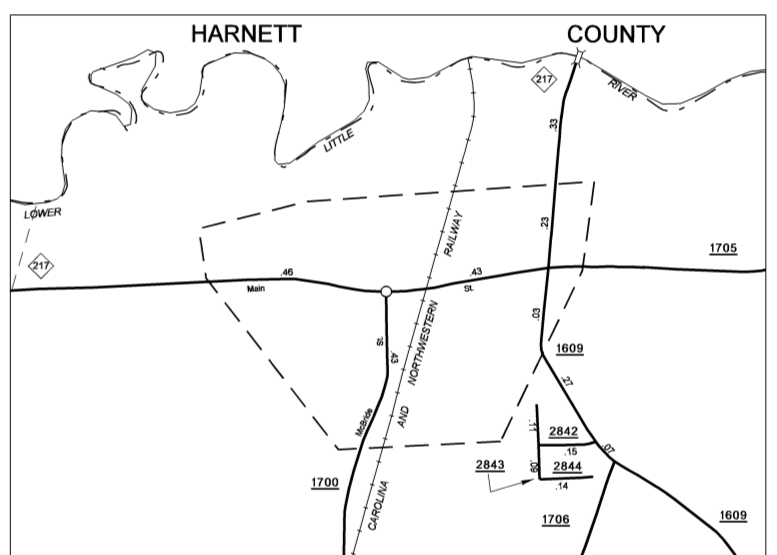
Inset 1



SUPPLEMENT KEY



Falcon and Godwin



Linden Pop. 170



ENLARGED MUNICIPAL AND SUBURBAN AREAS
CUMBERLAND COUNTY
NORTH CAROLINA
PREPARED BY THE
NORTH CAROLINA DEPARTMENT OF TRANSPORTATION
STATE ROAD MAINTENANCE UNIT - MAPPING AND INFORMATION SECTION
IN COOPERATION WITH THE
U.S. DEPARTMENT OF TRANSPORTATION
FEDERAL HIGHWAY ADMINISTRATION

