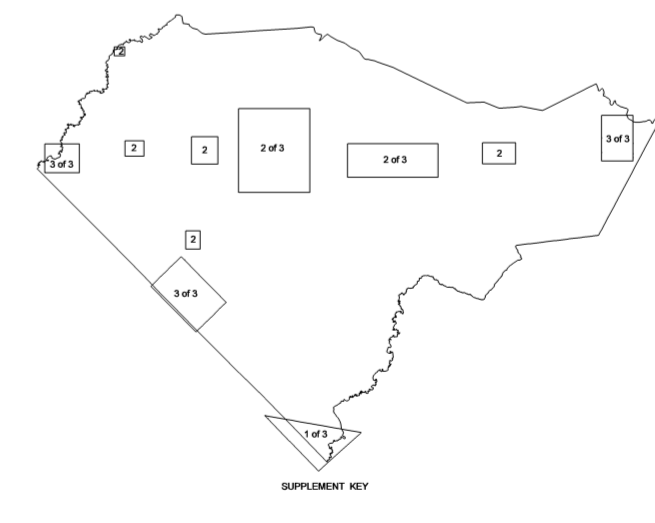
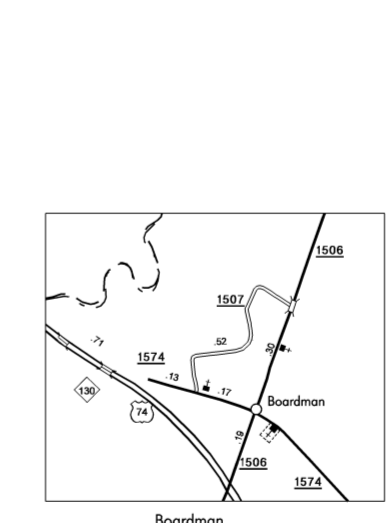
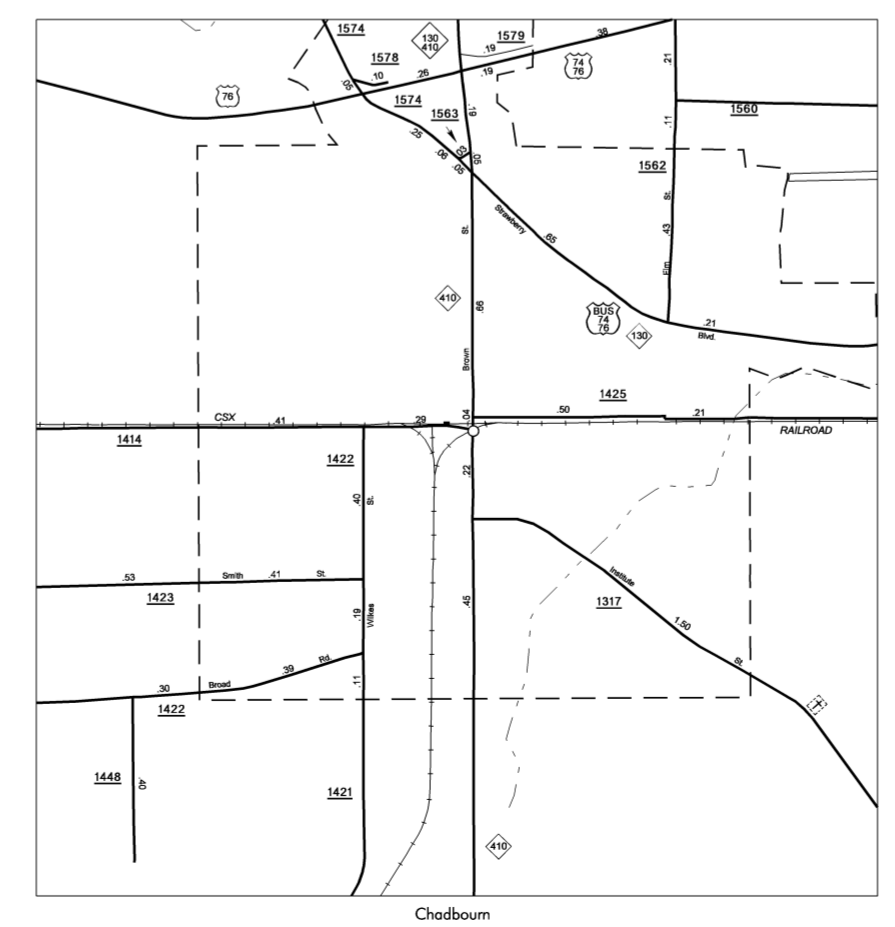
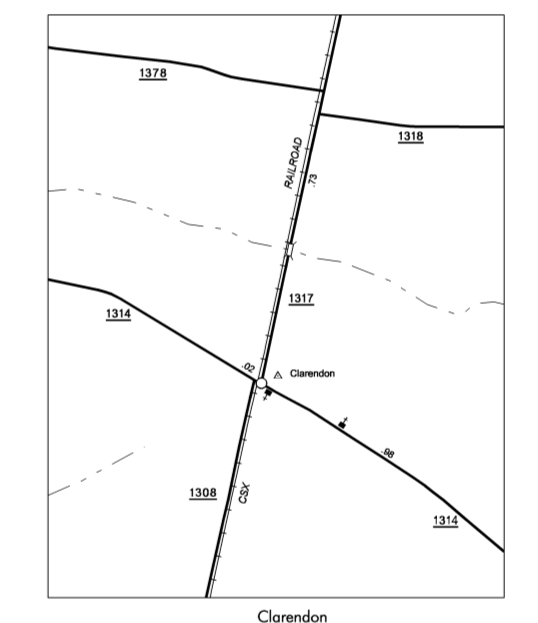
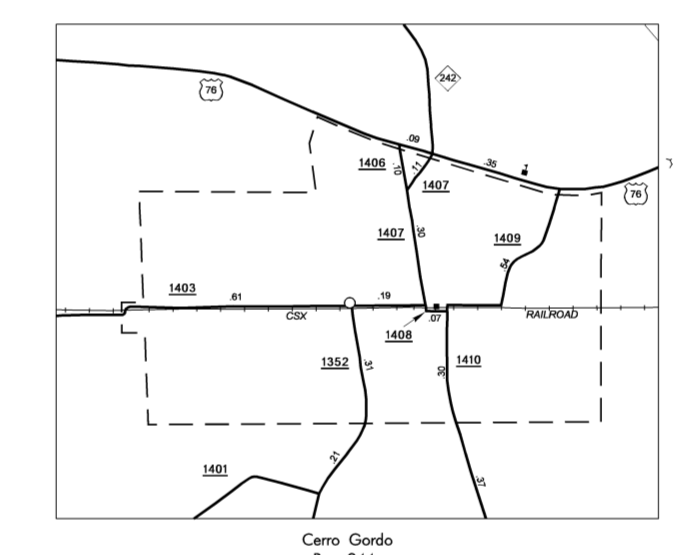
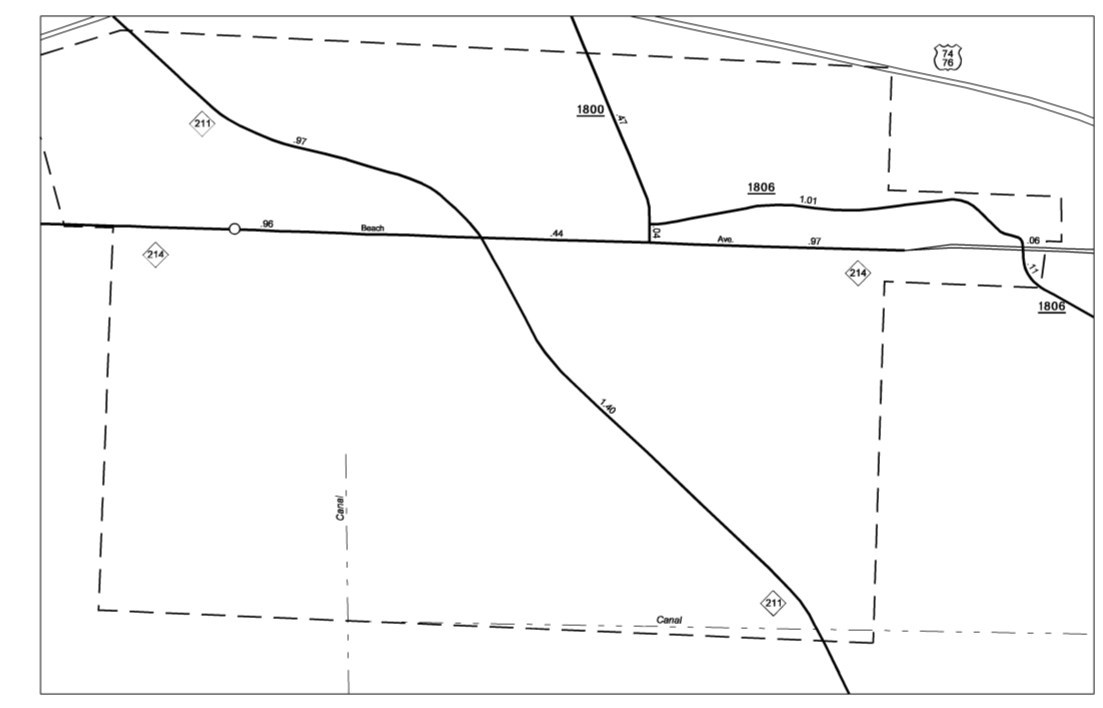
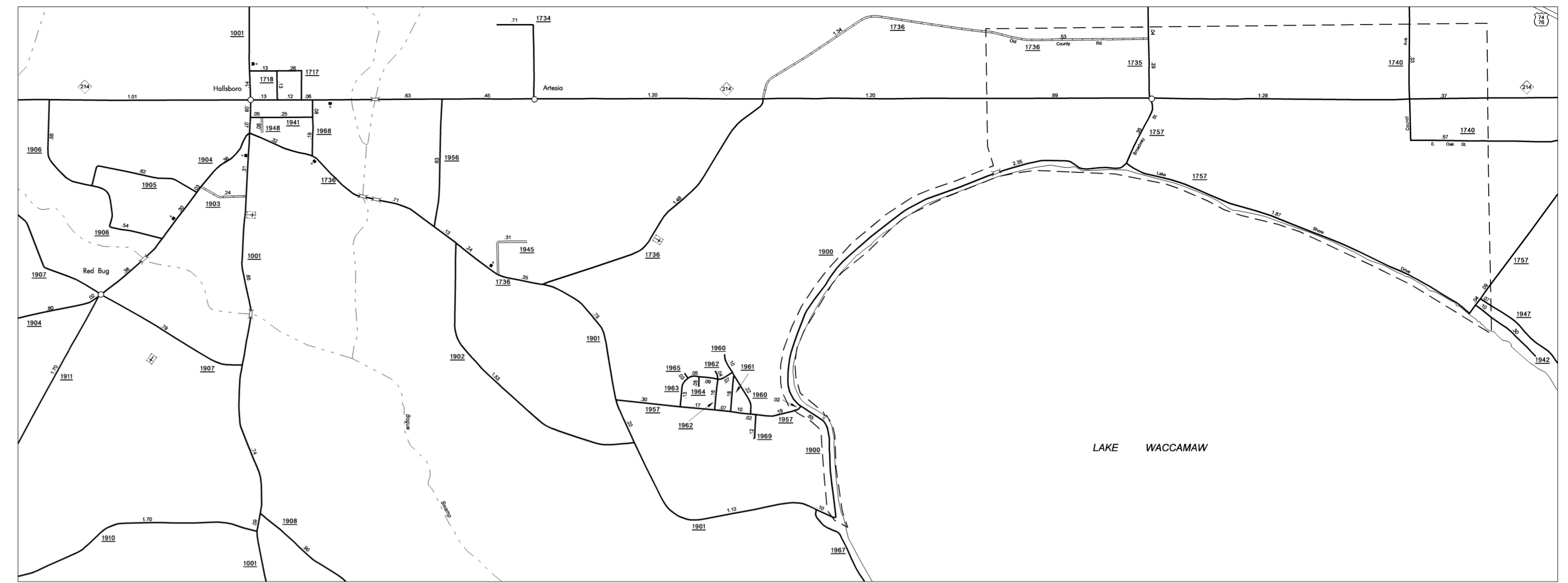
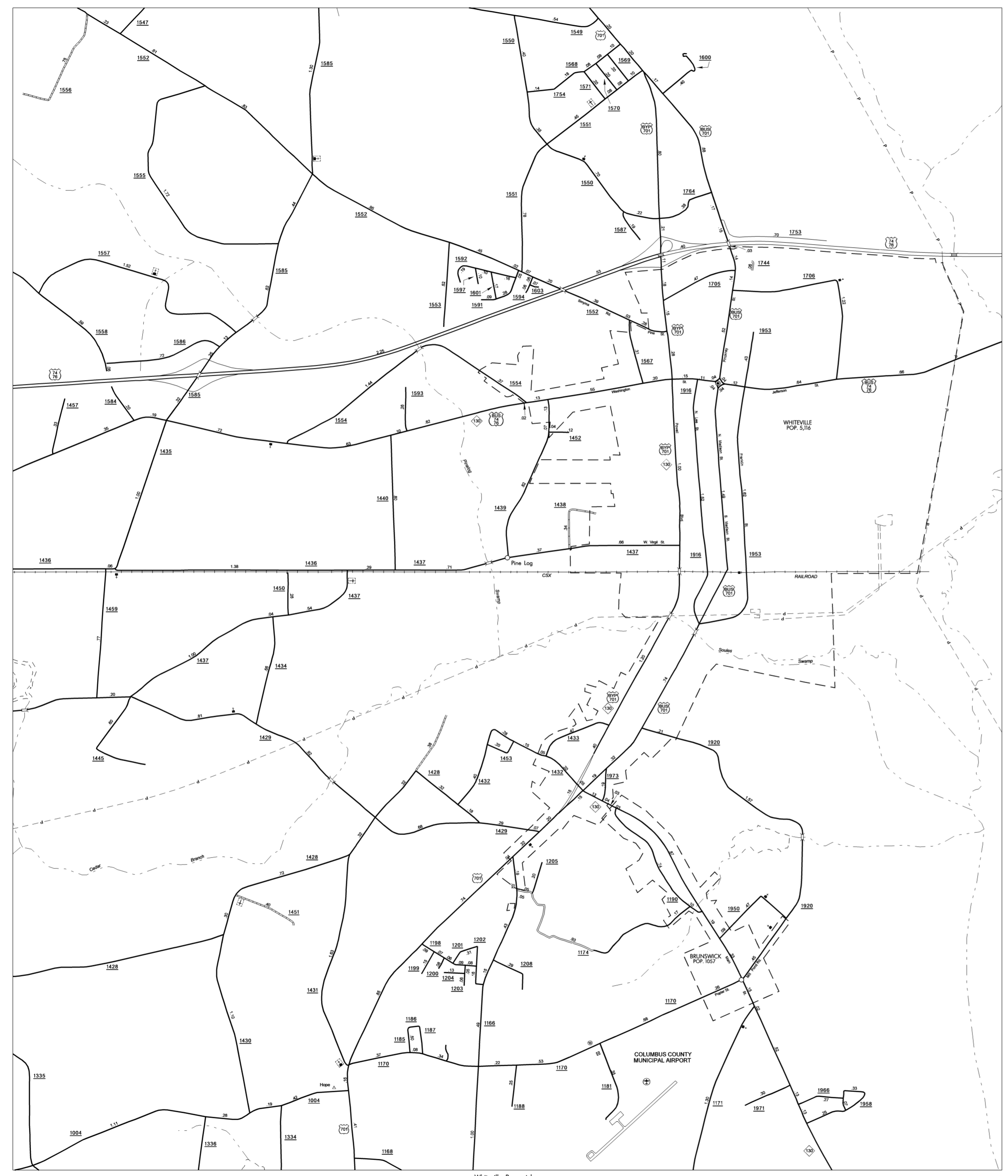


COLUMBUS SUP 1

COPIES OF THIS MAP ARE AVAILABLE TO THE PUBLIC AT A NOMINAL COST

N.C. DEPARTMENT OF TRANSPORTATION
 STATE ROAD MAINTENANCE UNIT - MAPPING AND INFORMATION SECTION
 3401 CARR SANDBARCT.
 FOLEY, N.C. 27834

REVISED
 1/26/05 P.M.K.
 6/30/05 M.F.G.
 9/1/06 J.M.B.
 10/24/06 J.M.B.
 2/5/07 J.M.B.
 5/11/07 J.M.B.
 1/16/08 J.M.B.
 2/12/08 J.M.B.
 2/20/08 J.M.B.
 4/23/08 S.A.M.
 12/1/09 B.D.G.



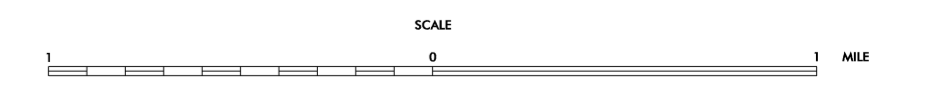
ENLARGED MUNICIPAL AND SUBURBAN AREAS

COLUMBUS COUNTY

NORTH CAROLINA

PREPARED BY THE
 NORTH CAROLINA DEPARTMENT OF TRANSPORTATION
 STATE ROAD MAINTENANCE UNIT - MAPPING AND INFORMATION SECTION

IN COOPERATION WITH THE
 U.S. DEPARTMENT OF TRANSPORTATION
 FEDERAL HIGHWAY ADMINISTRATION



10,000 FOOT GRID BASED ON NORTH CAROLINA PLANE COORDINATE SYSTEM
 POLYCONIC PROJECTION