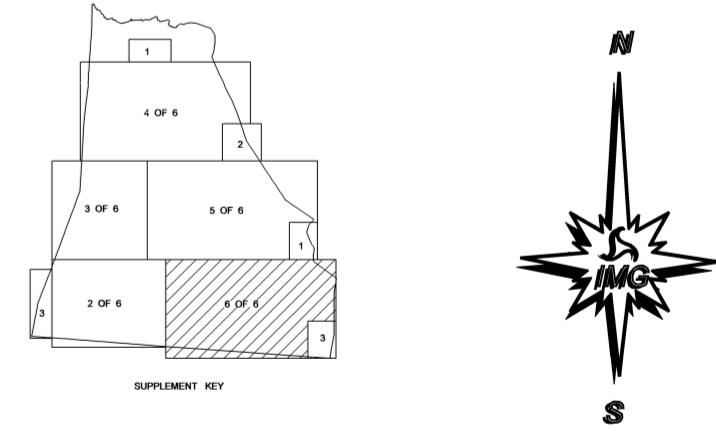


COPIES OF THIS MAP ARE AVAILABLE TO THE PUBLIC AT A NOMINAL COST. ADDRESS: N.C. DEPARTMENT OF TRANSPORTATION, 3401 CARL SANDERS CT., RALEIGH, N.C. 27610

REVISED: 10/2005 SRG, 12/2006 BCH, 5/14/07 BCH, 5/2008 BCH, 1/13/09 BDG, 3/11/09 BDG, 1/20/10 BDG, 3/2/10 BDG, 2/17/10 BDG



ENLARGED MUNICIPAL AND SUBURBAN AREAS
CLEVELAND COUNTY
NORTH CAROLINA
PREPARED BY THE
NORTH CAROLINA DEPARTMENT OF TRANSPORTATION
STATE ROAD MAINTENANCE UNIT - MAPPING AND INFORMATION SECTION
IN COOPERATION WITH THE
U.S. DEPARTMENT OF TRANSPORTATION
FEDERAL HIGHWAY ADMINISTRATION

SCALE 1 MILE