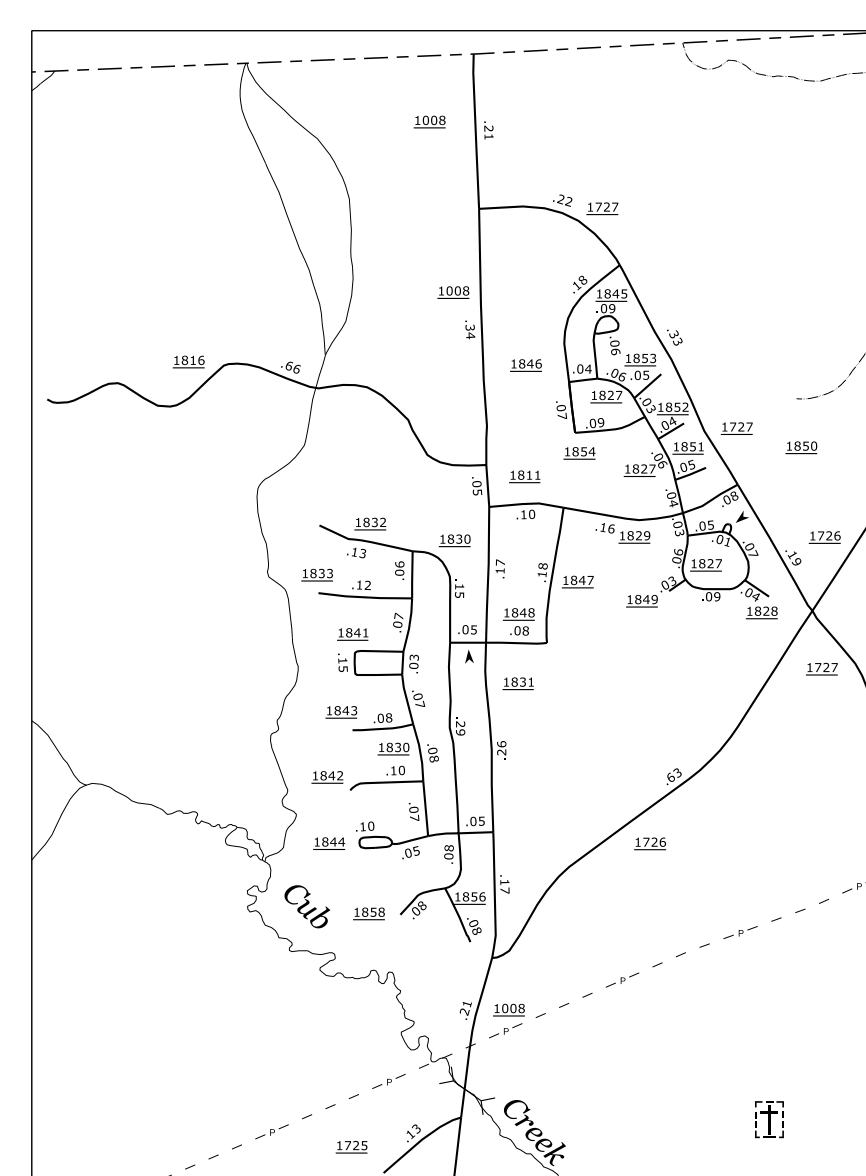


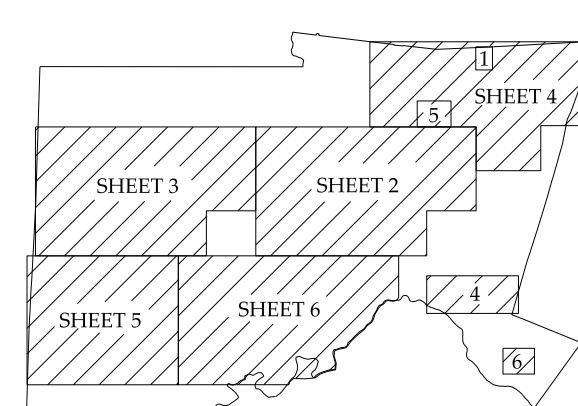
Disclaimer: The SRMU's goal is to provide the most accurate information as possible. The magnitude of the data prevents any guarantee of accuracy or completeness. If you find any information that is incorrect, please send your request to the SRMU Section.

N.C. DEPARTMENT OF TRANSPORTATION
STATE ROAD MAINTENANCE UNIT
3400 CARRIE SANBORN CT.
RALEIGH, N.C. 27609

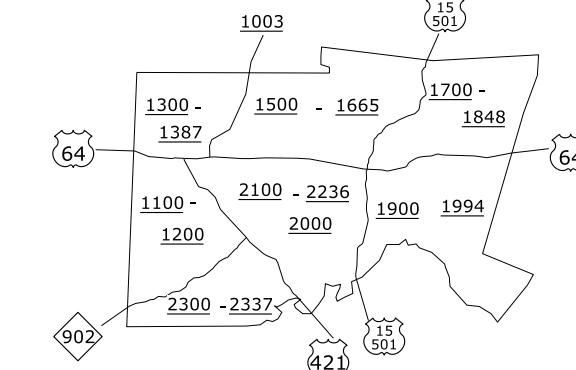
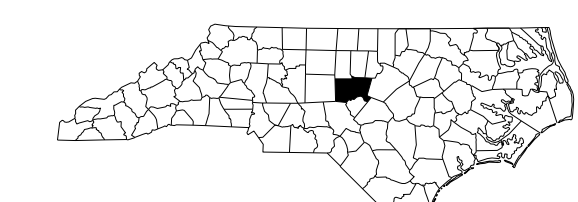
REVISED



Mount Carmel Road and Vicinity



COUNTY BOUNDARY ALIGNMENTS ARE BASED ON INFORMATION PROVIDED BY STATE AND FEDERAL AGENCIES, AND ARE SHOWN IN THEIR APPROXIMATE LOCATIONS.



KEY TO COUNTY ROAD NUMBERS
ALSO NUMBERS 1001 - 1012

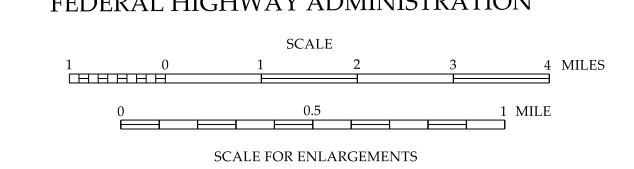
NOTE: MAP INCLUDES ONLY STATE MAINTAINED ROADS OR IMPORTANT NON-SYSTEM ROADS. MILEAGE NOT SHOWN ON FRONTAGE ROADS. ROADS SHOWN AS OF MAY 2010



CHATHAM COUNTY

NORTH CAROLINA

PREPARED BY THE
NORTH CAROLINA DEPARTMENT OF TRANSPORTATION
STATE ROAD MAINTENANCE UNIT - MAPPING SECTION
IN COOPERATION WITH THE
U. S. DEPARTMENT OF TRANSPORTATION
FEDERAL HIGHWAY ADMINISTRATION



10,000 FOOT GRID BASED ON NORTH CAROLINA PLANE COORDINATE SYSTEM
POLYCONIC PROJECTION