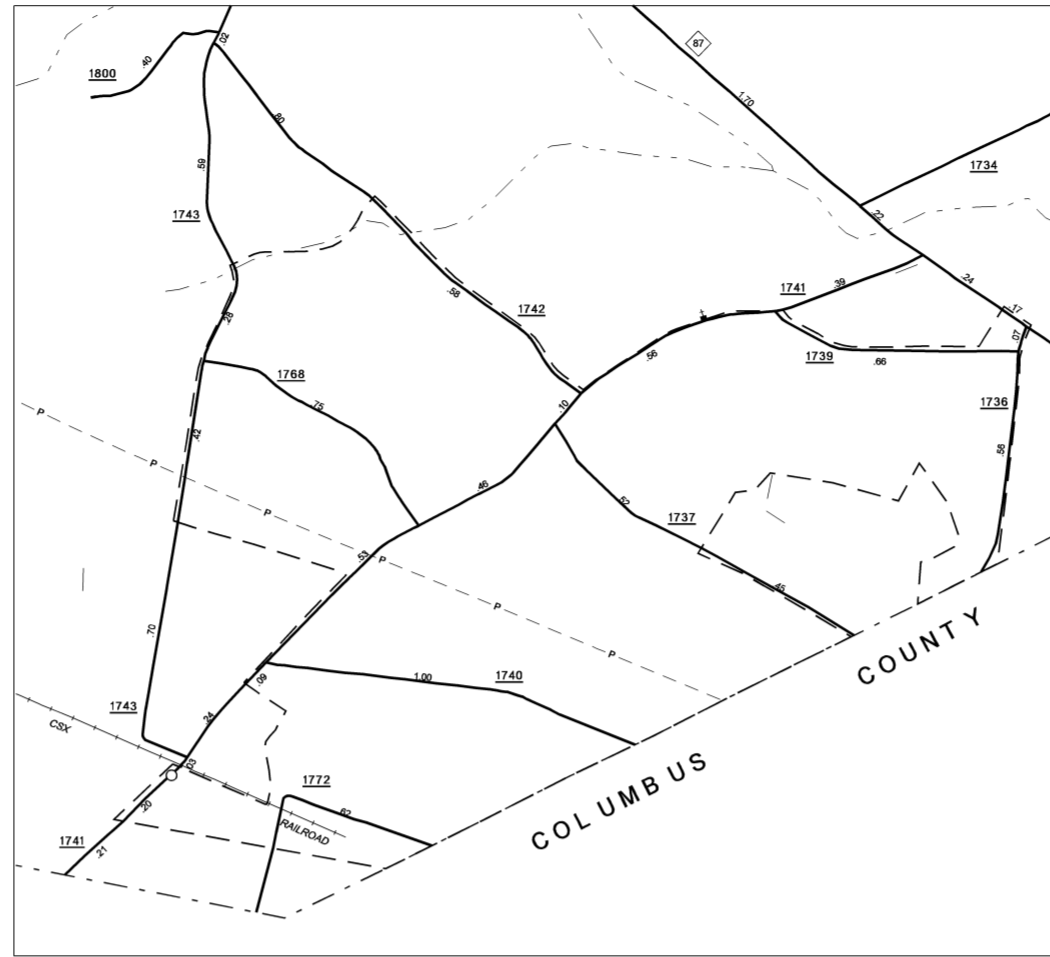
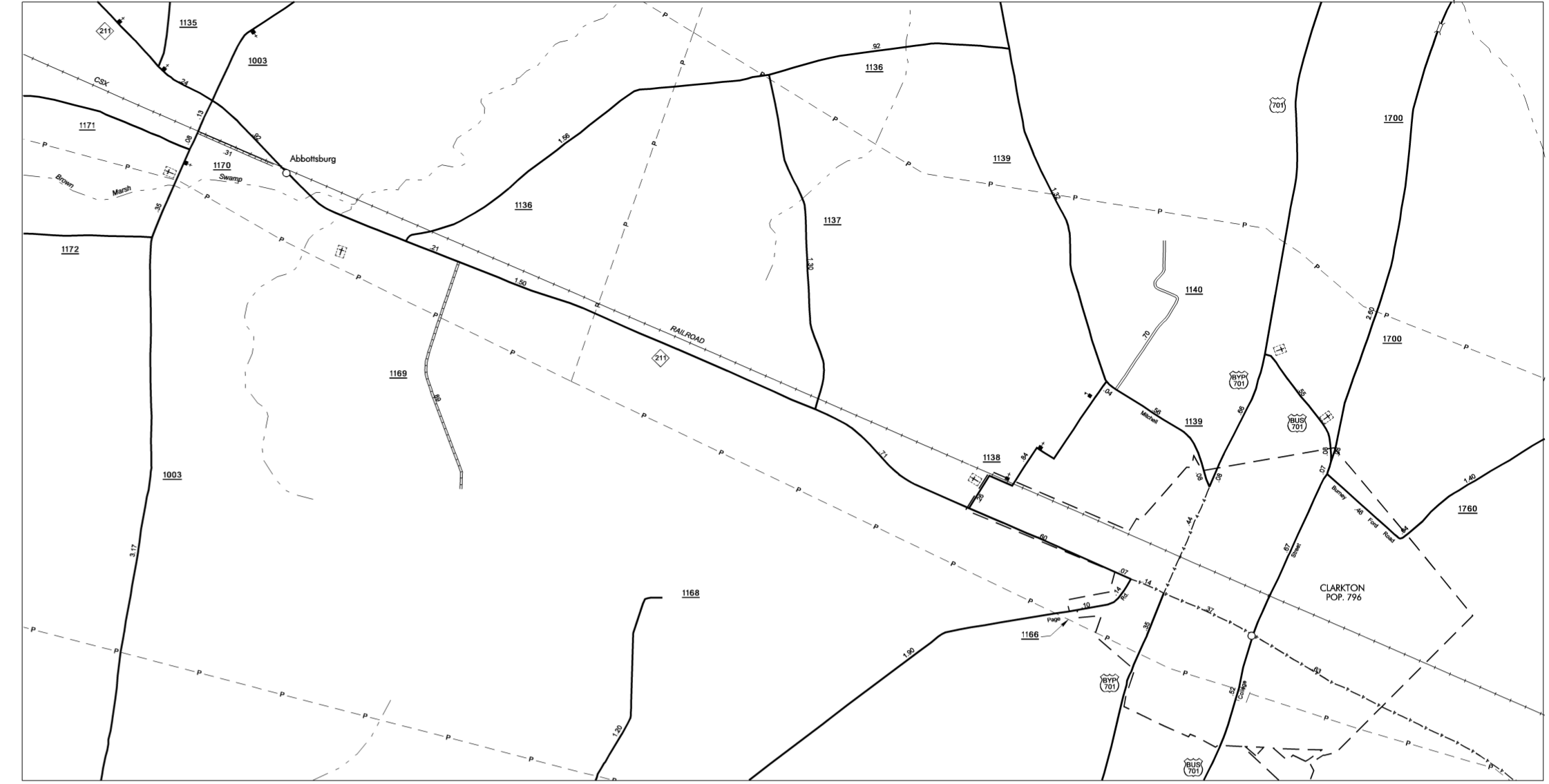




Bladenboro - Butters



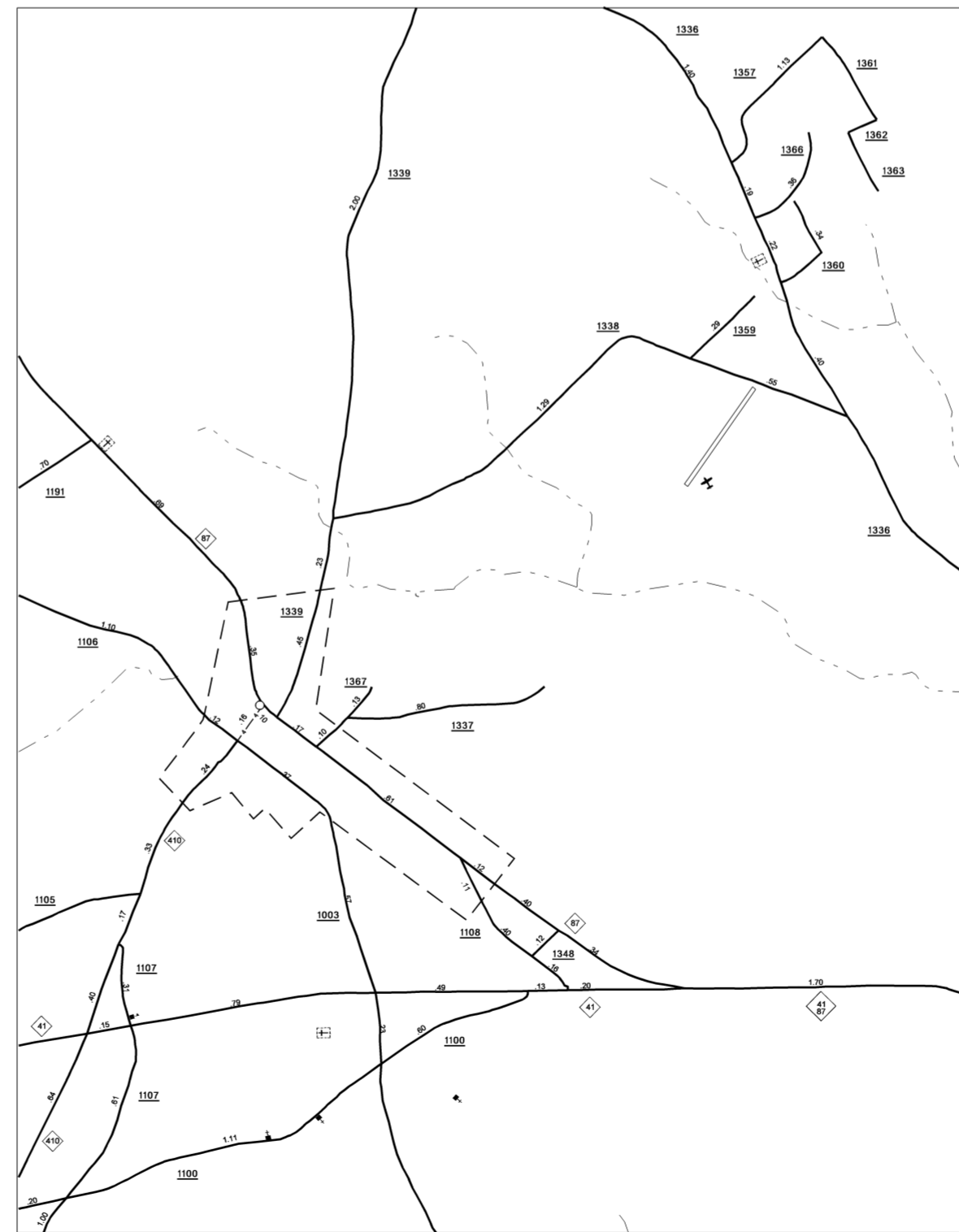
East Arcadio  
Pop. 531



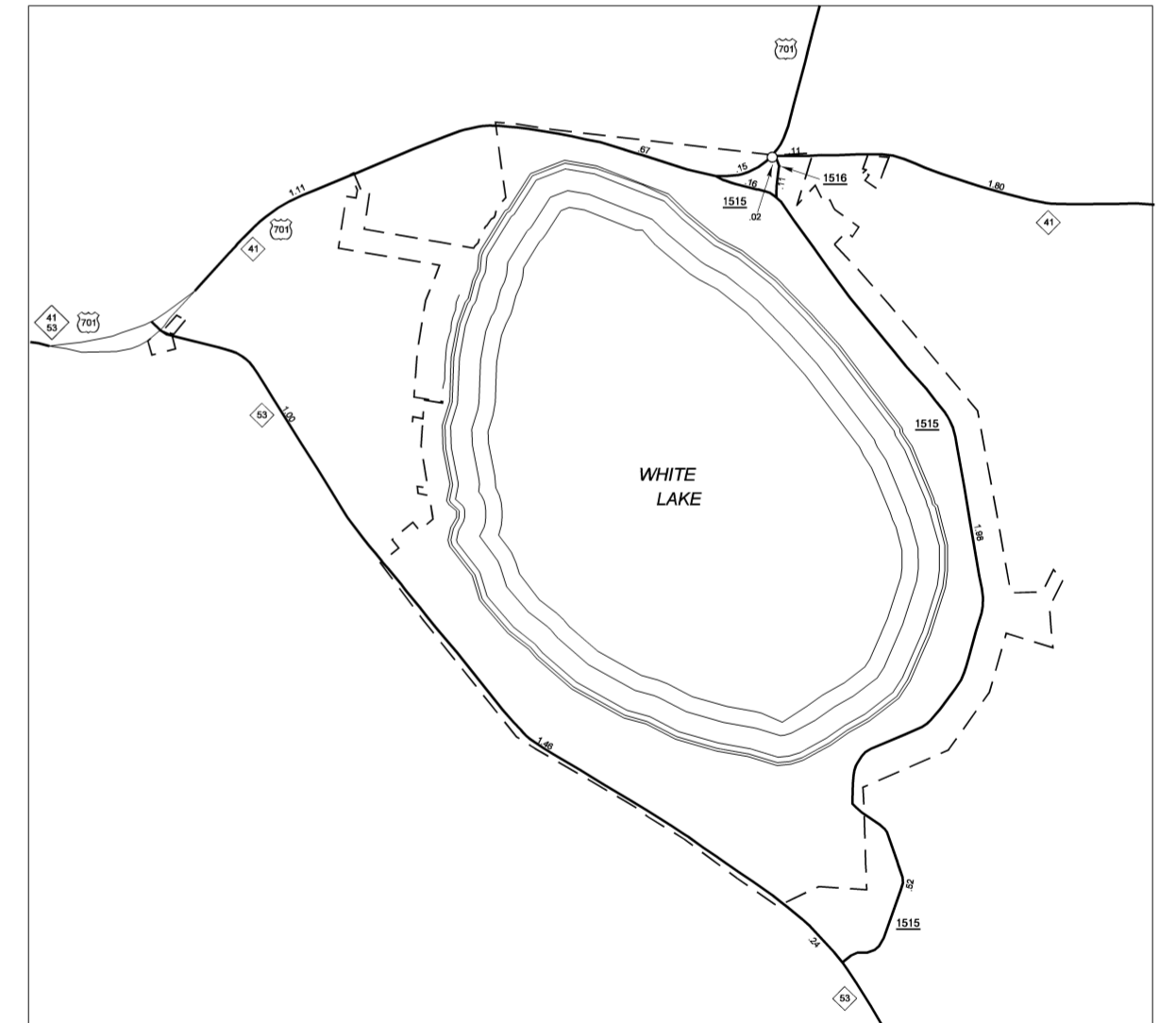
Clarkton - Abbeville



Elizabethtown  
Pop. 3,700



Dublin  
Pop. 252



White Lake  
Pop. 560

BLADEN  
 SUP 1  
 COPIES OF THIS MAP ARE AVAILABLE  
 TO THE PUBLIC AT A NOMINAL COST.  
 ADDRESS:  
 N.C. DEPARTMENT OF TRANSPORTATION  
 STATE ROAD MAINTENANCE UNIT - MAPPING AND INFORMATION SECTION  
 3401 CARL SANDHURST CT.  
 RALEIGH, N.C. 27610

REVISED  
 1/26/05 R.L.N.  
 6/30/05 M.A.G.  
 1/23/06 J.M.B.  
 5/15/06 J.M.B.  
 9/1/06 J.M.B.  
 10/24/06 J.M.B.  
 1/25/07 J.M.B.  
 5/11/07 J.M.B.  
 11/16/07 J.M.B.  
 1/16/08 J.M.B.  
 5/27/08 R.L.N.  
 11/4/09 S.M.



ENLARGED MUNICIPAL AND SUBURBAN AREAS  
**BLADEN COUNTY**  
 NORTH CAROLINA  
 PREPARED BY THE  
 NORTH CAROLINA DEPARTMENT OF TRANSPORTATION  
 STATE ROAD MAINTENANCE UNIT - MAPPING AND INFORMATION SECTION  
 IN COOPERATION WITH THE  
 U.S. DEPARTMENT OF TRANSPORTATION  
 FEDERAL HIGHWAY ADMINISTRATION  
 SCALE  
  
10,000 FOOT GRID BASED ON NORTH CAROLINA PLANE COORDINATE SYSTEM  
 POLYCONIC PROJECTION