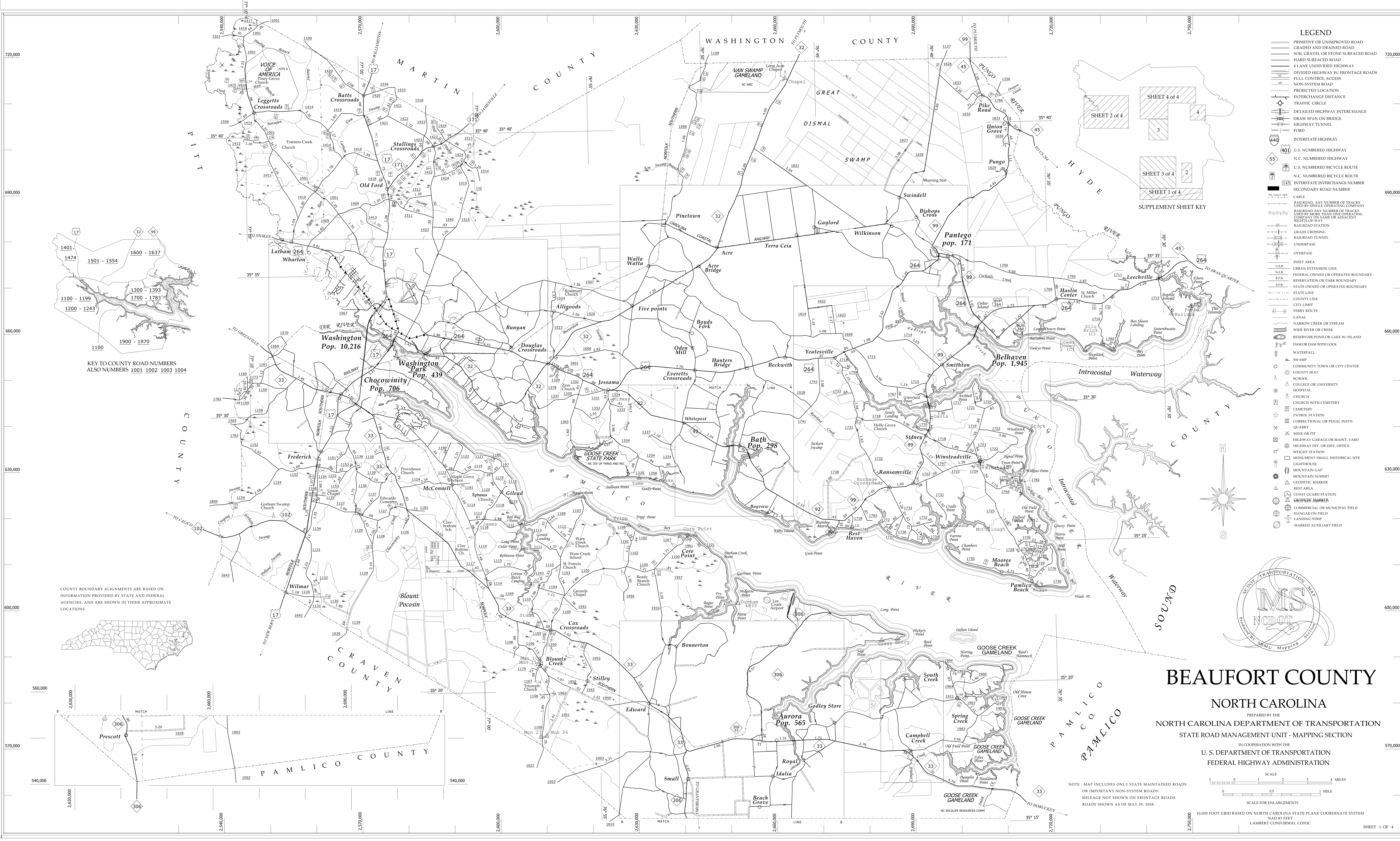


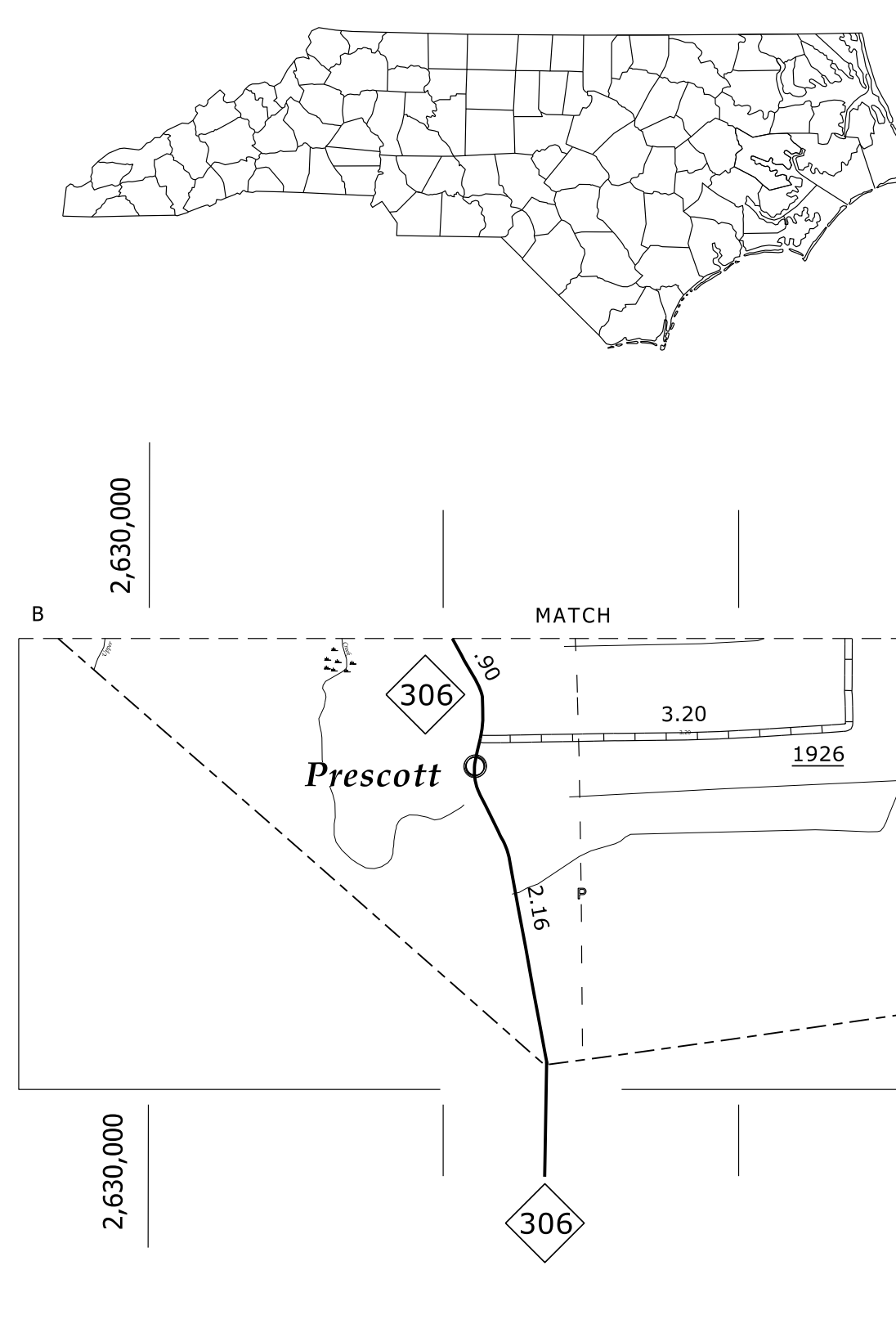
Disclaimer: The SRMU's goal is to provide the most accurate information as possible. The magnitude of the data prevents any guarantee of accuracy or completeness. If you find any information that is incorrect, please send your request to the SRMU Section.

COPIES OF THIS MAP ARE AVAILABLE TO THE PUBLIC AT A MINIMAL COST. ADDRESS: N.C. DEPARTMENT OF TRANSPORTATION, 101 EAST FIFTH STREET, RALEIGH, N.C. 27601

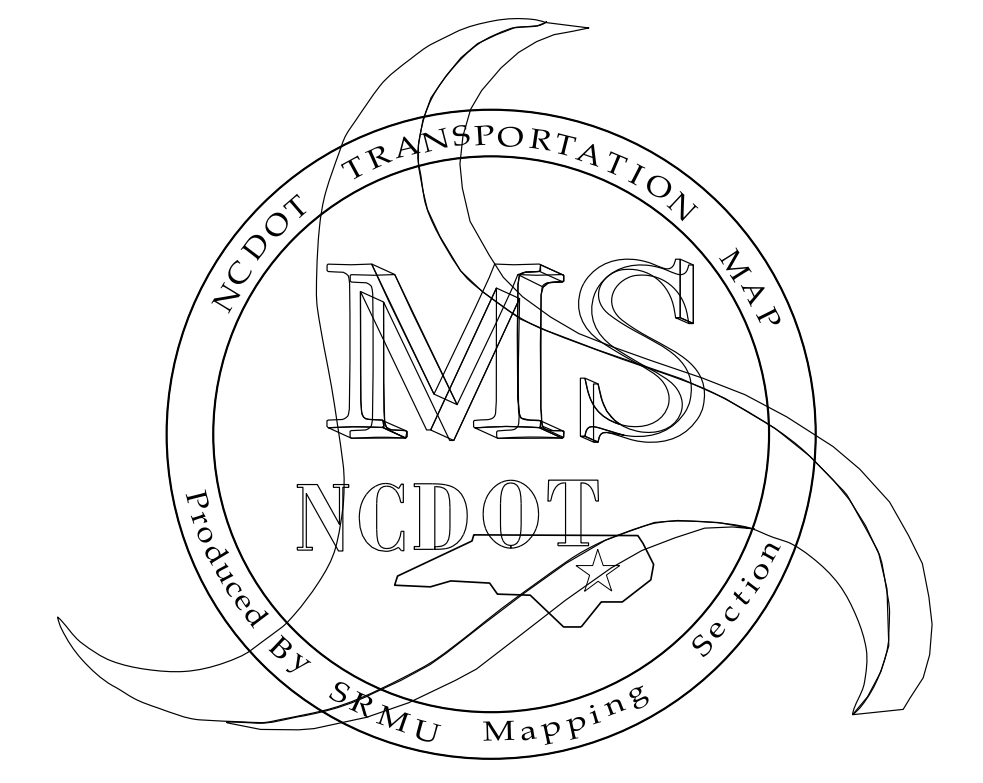
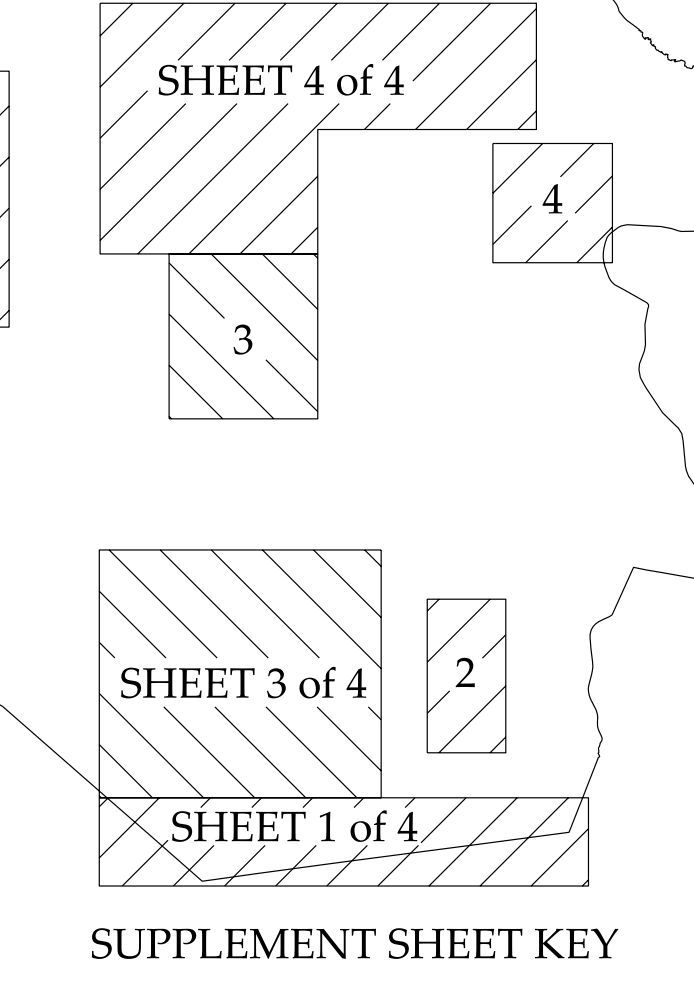


KEY TO COUNTY ROAD NUMBERS  
ALSO NUMBERS 1001 1002 1003 1004

COUNTY BOUNDARY ALIGNMENTS ARE BASED ON INFORMATION PROVIDED BY STATE AND FEDERAL AGENCIES, AND ARE SHOWN IN THEIR APPROXIMATE LOCATIONS.



- LEGEND**
- PRIMITIVE OR UNIMPROVED ROAD
  - GRADED AND DRAINED ROAD
  - SOIL GRAVEL OR STONE SURFACED ROAD
  - HARD SURFACED ROAD
  - 4 LANE UNDIVIDED HIGHWAY
  - DIVIDED HIGHWAY W/ FRONTAGE ROADS
  - FULL CONTROL ACCESS
  - NON-SYSTEM ROAD
  - PROJECTED LOCATION
  - INTERCHANGE DISTANCE
  - TRAFFIC CIRCLE
  - DETAILED HIGHWAY INTERCHANGE
  - DRAW SPAN ON BRIDGE
  - HIGHWAY TUNNEL
  - FORD
  - INTERSTATE HIGHWAY
  - U.S. NUMBERED HIGHWAY
  - N.C. NUMBERED HIGHWAY
  - U.S. NUMBERED BICYCLE ROUTE
  - N.C. NUMBERED BICYCLE ROUTE
  - INTERSTATE INTERCHANGE NUMBER
  - SECONDARY ROAD NUMBER
  - CABLE
  - RAILROAD, ANY NUMBER OF TRACKS USED BY SINGLE OPERATING COMPANY
  - RAILROAD ANY NUMBER OF TRACKS USED BY MORE THAN ONE OPERATING COMPANY ON SAME OR ADJACENT RIGHTS-OF-WAY
  - RAILROAD STATION
  - RAILROAD CROSSING
  - RAILROAD TUNNEL
  - UNDERPASS
  - OVERPASS
  - INSET AREA
  - U.E.R. URBAN EXTENSION LINE
  - F.F.B. FEDERAL OWNED OR OPERATED BOUNDARY
  - R.P.B. RESERVATION OR PARK BOUNDARY
  - S.F.B. STATE OWNED OR OPERATED BOUNDARY
  - STATE LINE
  - COUNTY LINE
  - CITY LIMIT
  - FERRY ROUTE
  - CANAL
  - NARROW CREEK OR STREAM
  - WIDE RIVER OR CREEK
  - RESERVOIR, POND, OR LAKE W/ ISLAND
  - DAM OR DAM WITH LOCK
  - WATERFALL
  - SWAMP
  - COMMUNITY TOWN OR CITY CENTER
  - COUNTY SEAT
  - SCHOOL
  - COLLEGE OR UNIVERSITY
  - HOSPITAL
  - CHURCH
  - CHURCH WITH CEMETERY
  - CEMETERY
  - PATROL STATION
  - CORRECTIONAL OR PENAL INSTN.
  - QUARRY
  - MINE OR PIT
  - HIGHWAY GARAGE OR MAINT. YARD
  - HIGHWAY DIV. OR DIST. OFFICE
  - WEIGHT STATION
  - MONUMENT-SMALL HISTORICAL SITE
  - LIGHTHOUSE
  - MOUNTAIN GAP
  - MOUNTAIN SUMMIT
  - GEODETIC MARKER
  - REST AREA
  - COAST GUARD STATION
  - SHIPPING MARKERS
  - COMMERCIAL OR MUNICIPAL FIELD
  - HANGAR ON FIELD
  - LANDING STRIP
  - MARKED AUXILIARY FIELD



# BEAUFORT COUNTY

## NORTH CAROLINA

PREPARED BY THE  
NORTH CAROLINA DEPARTMENT OF TRANSPORTATION  
STATE ROAD MANAGEMENT UNIT - MAPPING SECTION  
IN COOPERATION WITH THE  
U. S. DEPARTMENT OF TRANSPORTATION  
FEDERAL HIGHWAY ADMINISTRATION

NOTE: MAP INCLUDES ONLY STATE MAINTAINED ROADS OR IMPORTANT NON-SYSTEM ROADS. MILEAGE NOT SHOWN ON FRONTAGE ROADS. ROADS SHOWN AS OF MAY 29, 2008.

SCALE FOR ENLARGEMENTS  
SCALE FOR ENLARGEMENTS  
10,000 FOOT GRID BASED ON NORTH CAROLINA STATE PLANE COORDINATE SYSTEM  
NAD 83 FEET  
LAMBERT CONFORMAL CONIC

SCALE 1" = 1 MILE  
SCALE 1" = 0.5 MILE

SHEET 1 OF 4