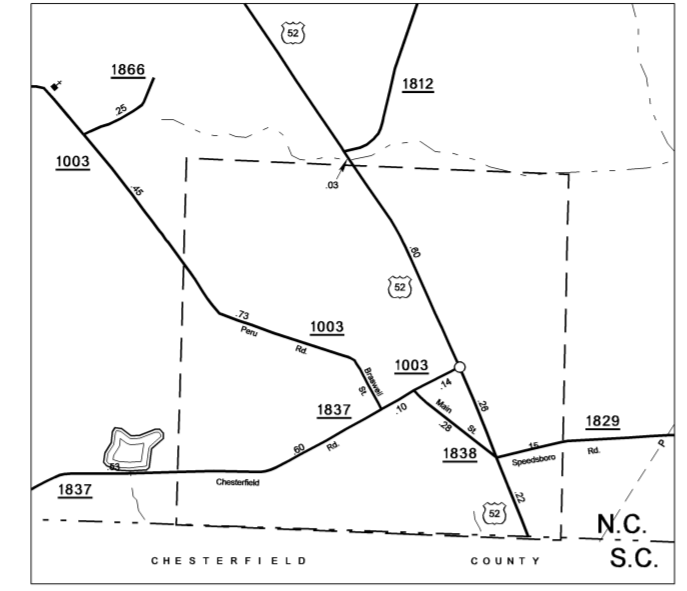
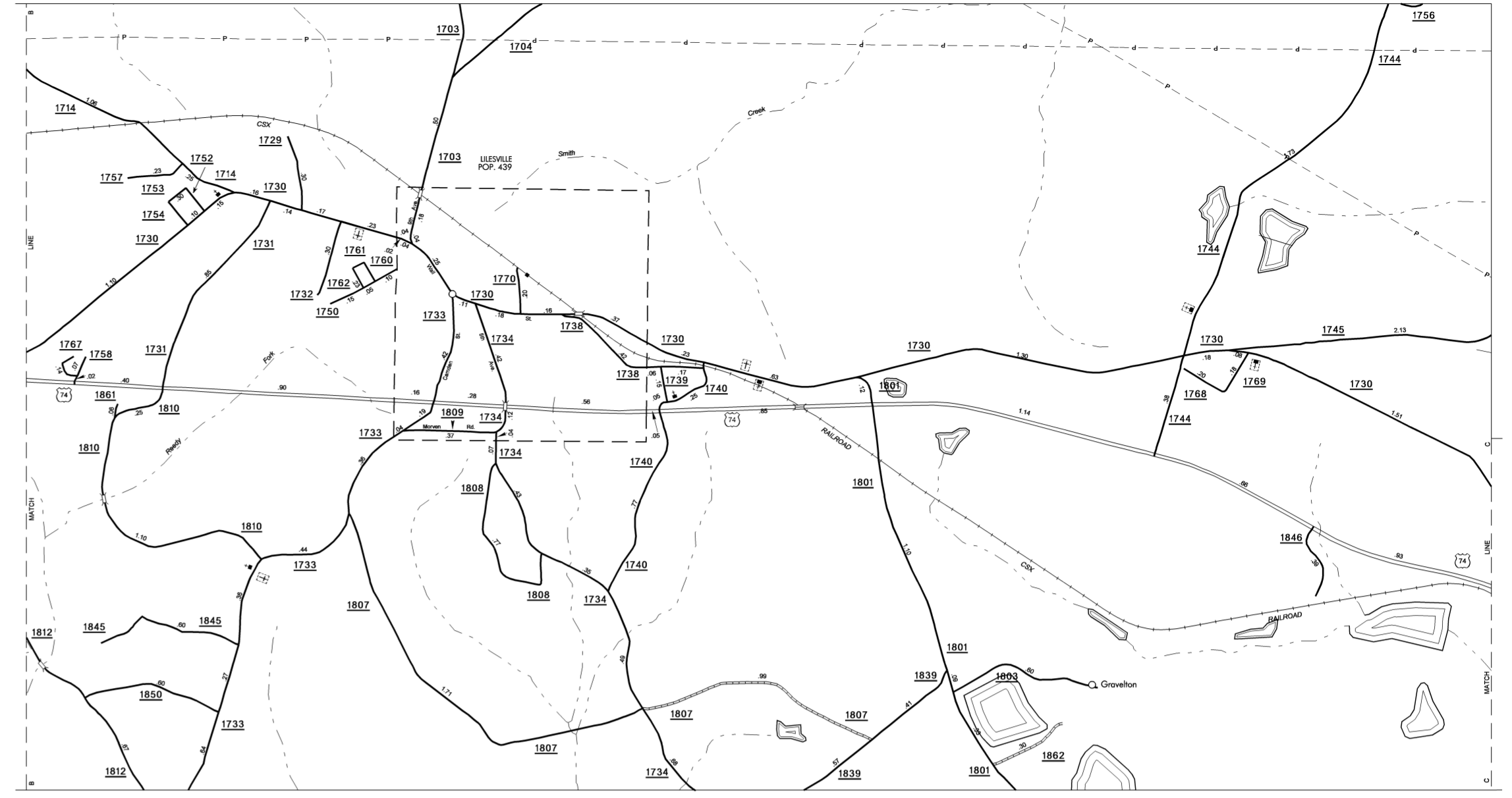


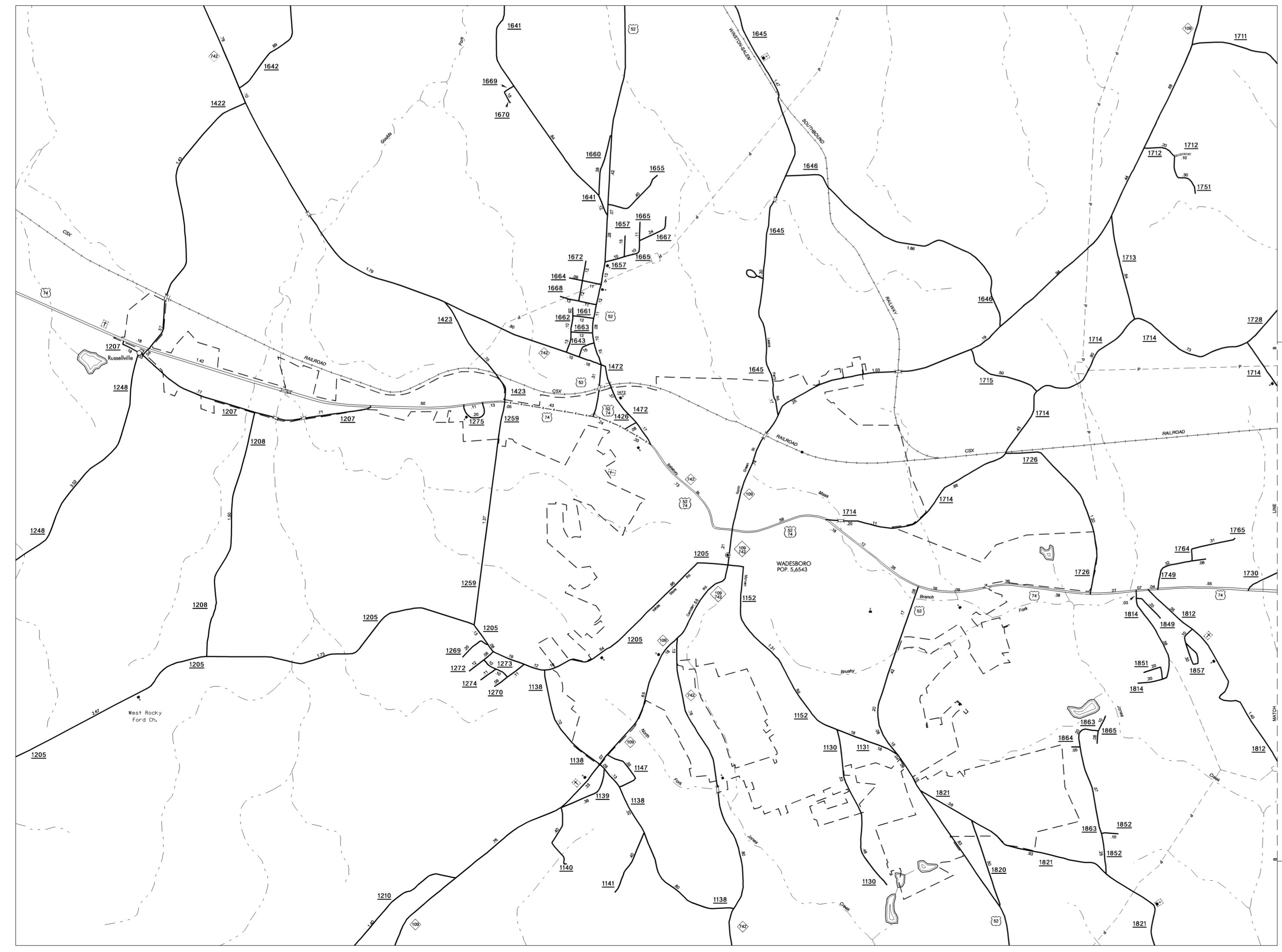
Peachland  
Pop. 537



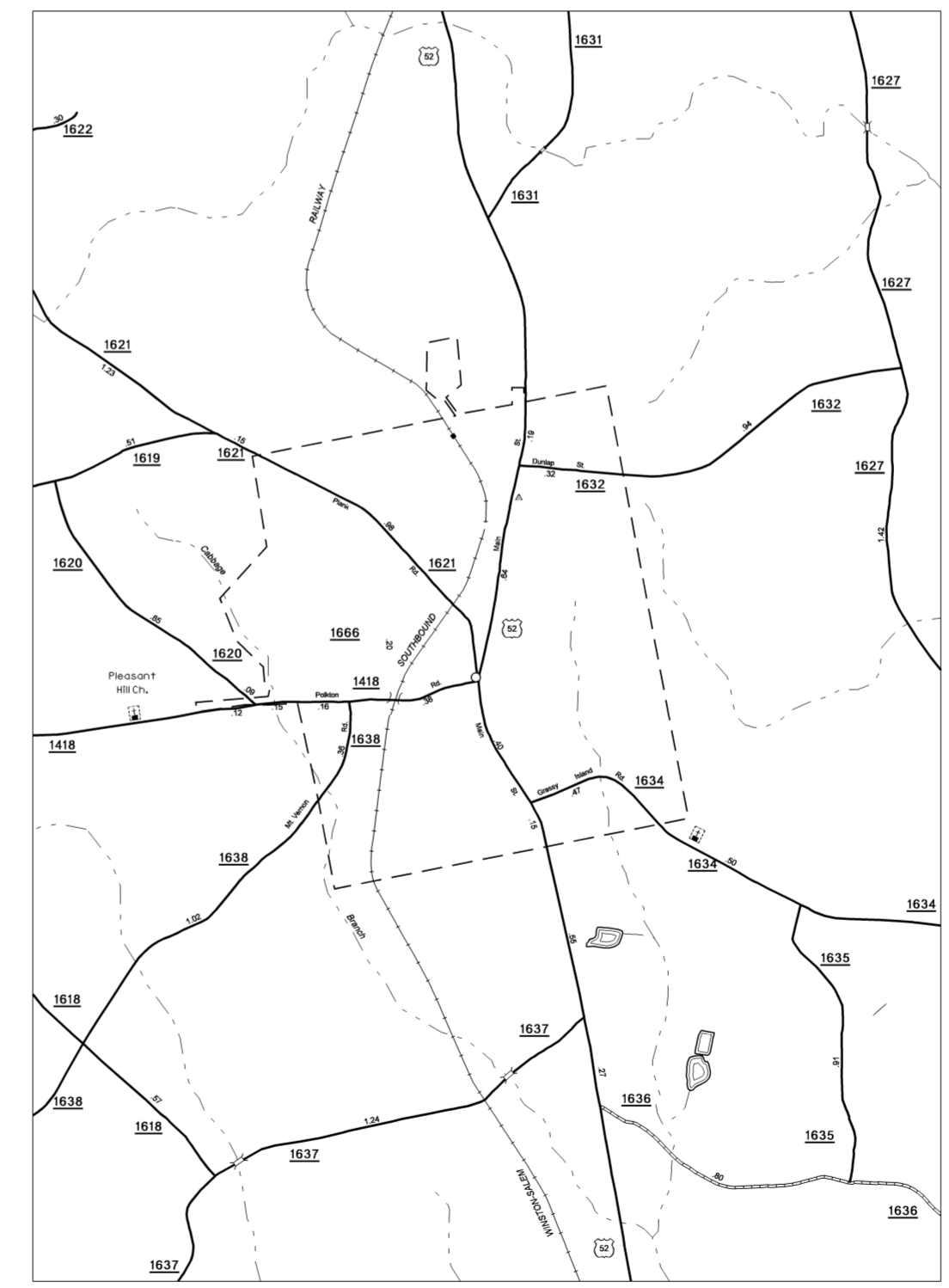
McFarlan  
Pop. 83



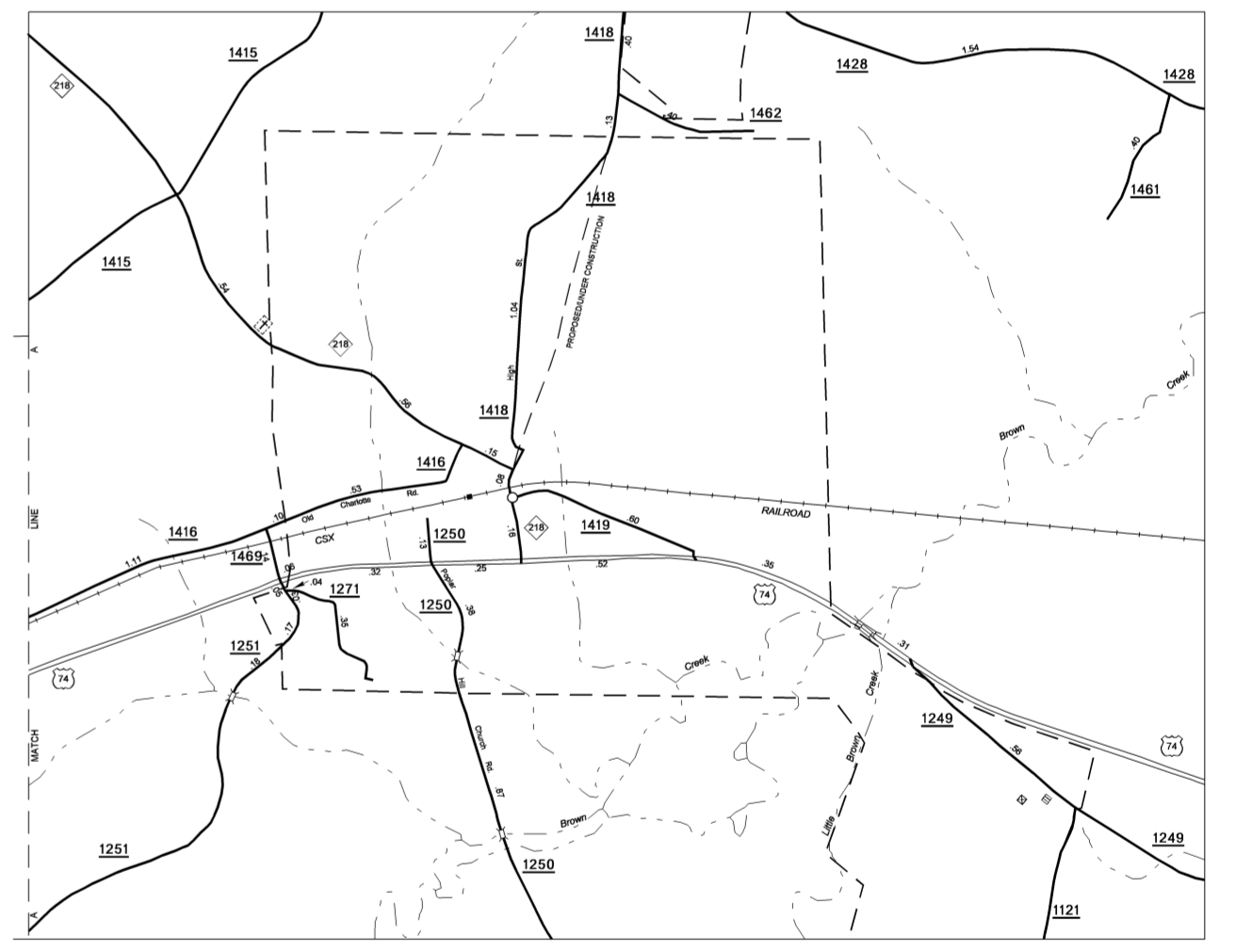
Lilesville  
Pop. 447



Wadesboro  
Pop. 5,543

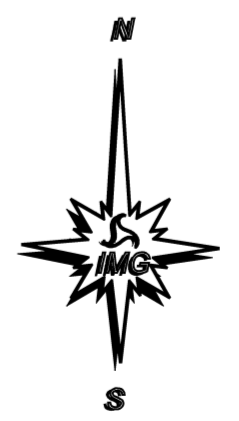


Ansonville  
Pop. 612



Polston  
Pop. 2,971

COPIES OF THIS MAP ARE AVAILABLE TO THE PUBLIC AT A NOMINAL COST.  
 N.C. DEPARTMENT OF TRANSPORTATION  
 3401 CARL SANDERS BLVD.  
 RALEIGH, N.C. 27610  
 SUP. 1  
 REVISED  
 8/30/00 MEM  
 1/15/00 MEM  
 10/28/09 MEM



ENLARGED MUNICIPAL AND SUBURBAN AREAS  
**ANSON COUNTY**  
 NORTH CAROLINA  
 PREPARED BY THE  
 NORTH CAROLINA DEPARTMENT OF TRANSPORTATION  
 STATE ROAD MAINTENANCE UNIT - MAPPING AND INFORMATION SECTION  
 IN COOPERATION WITH THE  
 U.S. DEPARTMENT OF TRANSPORTATION  
 FEDERAL HIGHWAY ADMINISTRATION

