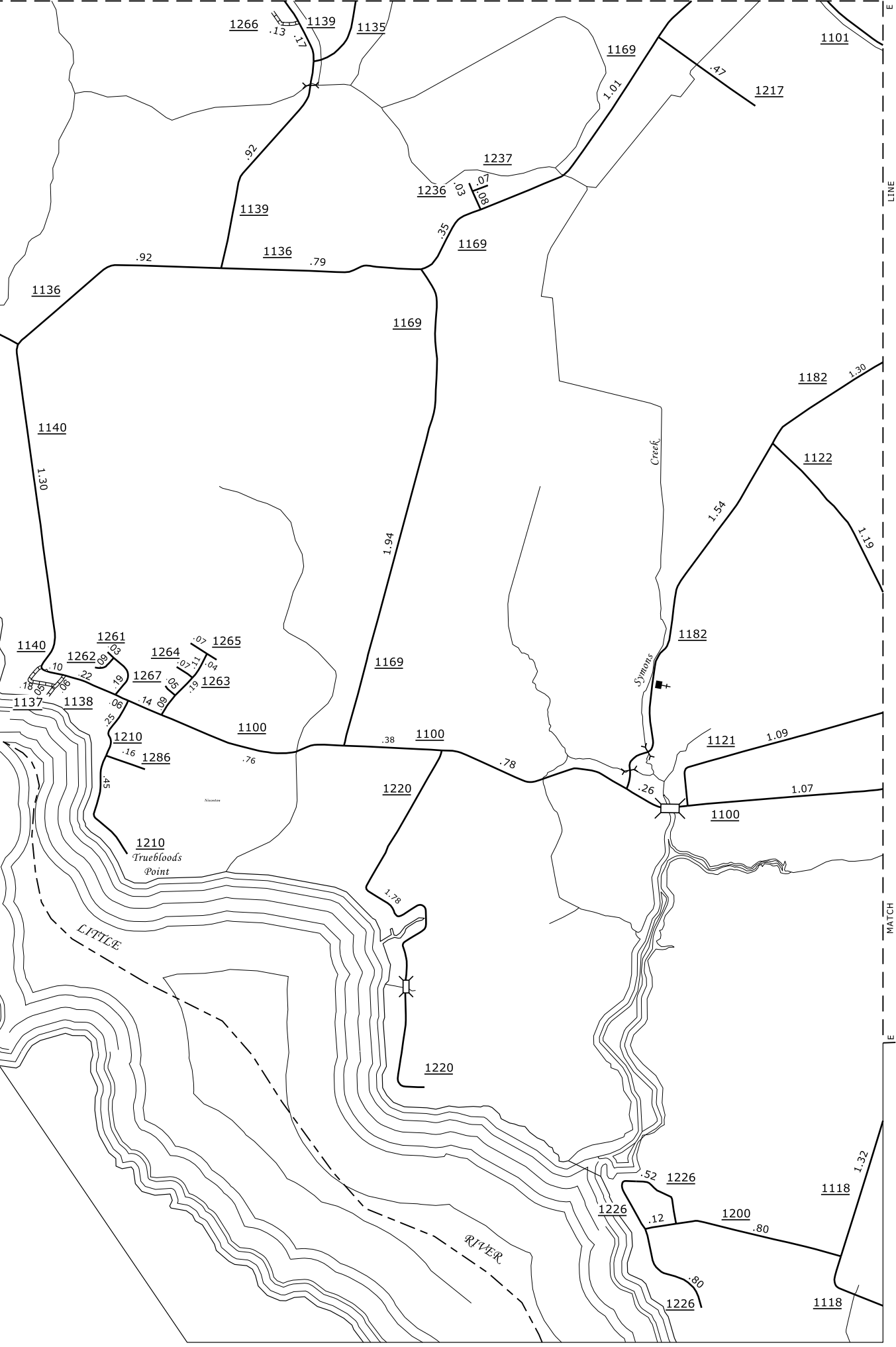
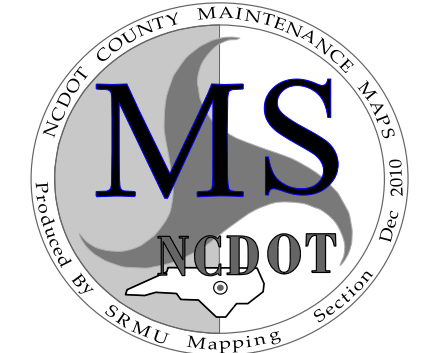
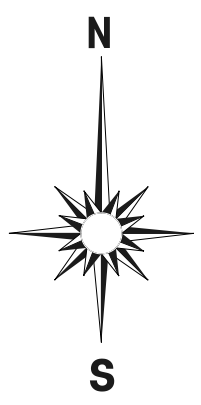


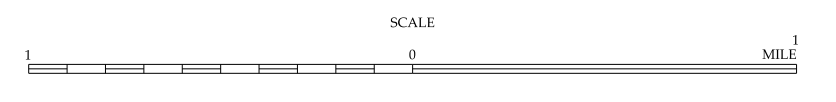
Glen Cove



Nixonton and Vicinity



ENLARGED MUNICIPAL AND SUBURBAN AREAS
PASQUOTANK COUNTY
NORTH CAROLINA
PREPARED BY THE
NORTH CAROLINA DEPARTMENT OF TRANSPORTATION
STATE ROAD MAINTENANCE UNIT - MAPPING SECTION
IN COOPERATION WITH THE
U.S. DEPARTMENT OF TRANSPORTATION
FEDERAL HIGHWAY ADMINISTRATION



10,000 FOOT GRID BASED ON NORTH CAROLINA PLANE COORDINATE SYSTEM
POLYCONIC PROJECTION SHEET 2 OF 2

Disclaimer: The SRMU's goal is to provide the most accurate information as possible. The magnitude of the data prevents any guarantee of accuracy or completeness. If you find any information that is incorrect, please send your request to the SRMU Section.

COPIES OF THIS MAP ARE AVAILABLE TO THE PUBLIC AT A NOMINAL COST.

N.C. DEPARTMENT OF TRANSPORTATION
STATE ROAD MAINTENANCE UNIT
3401 CARE SANFORD, N.C.
RALEIGH, N.C. 27601