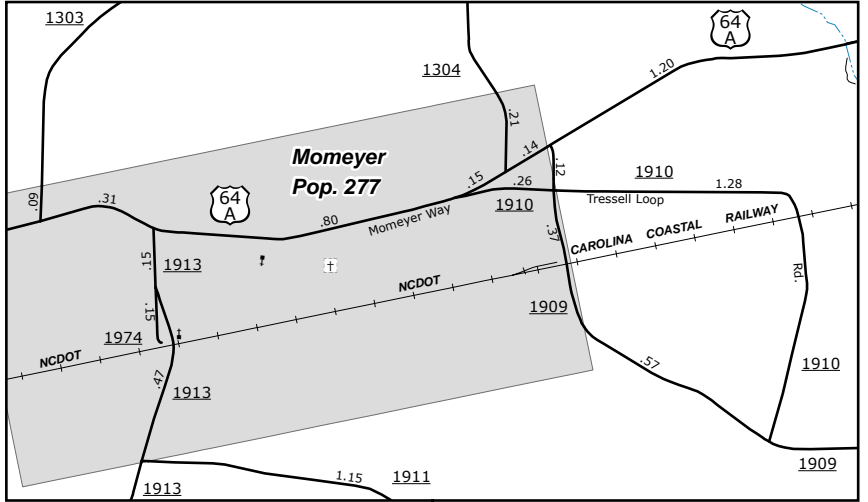
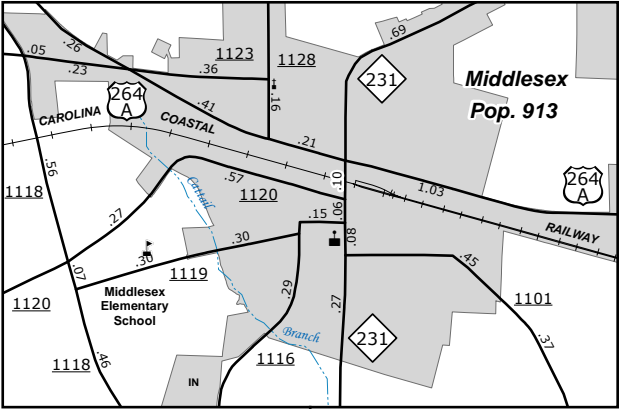


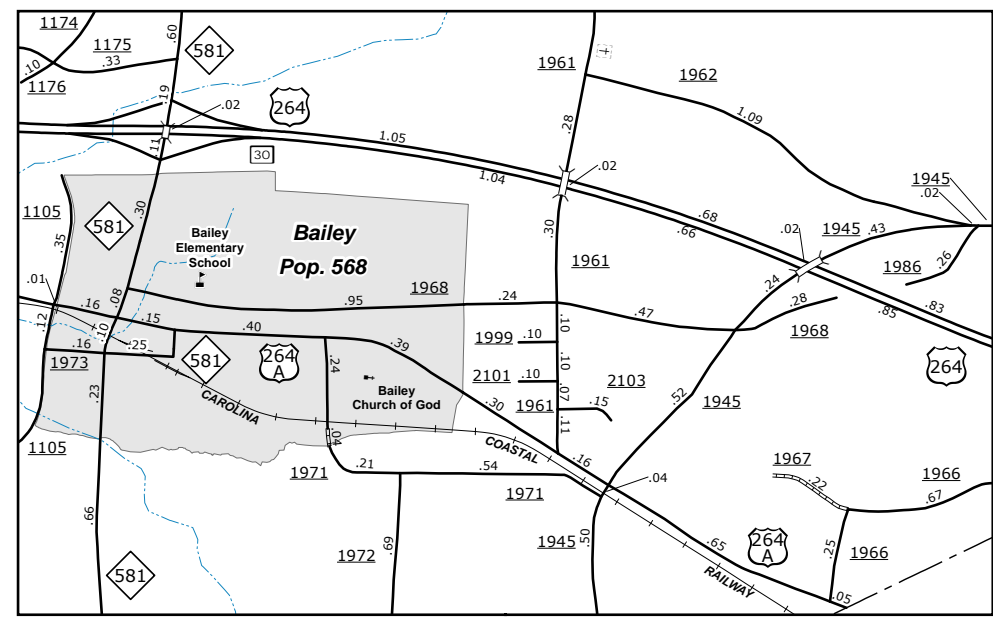
Spring Hope
Pop. 1,310



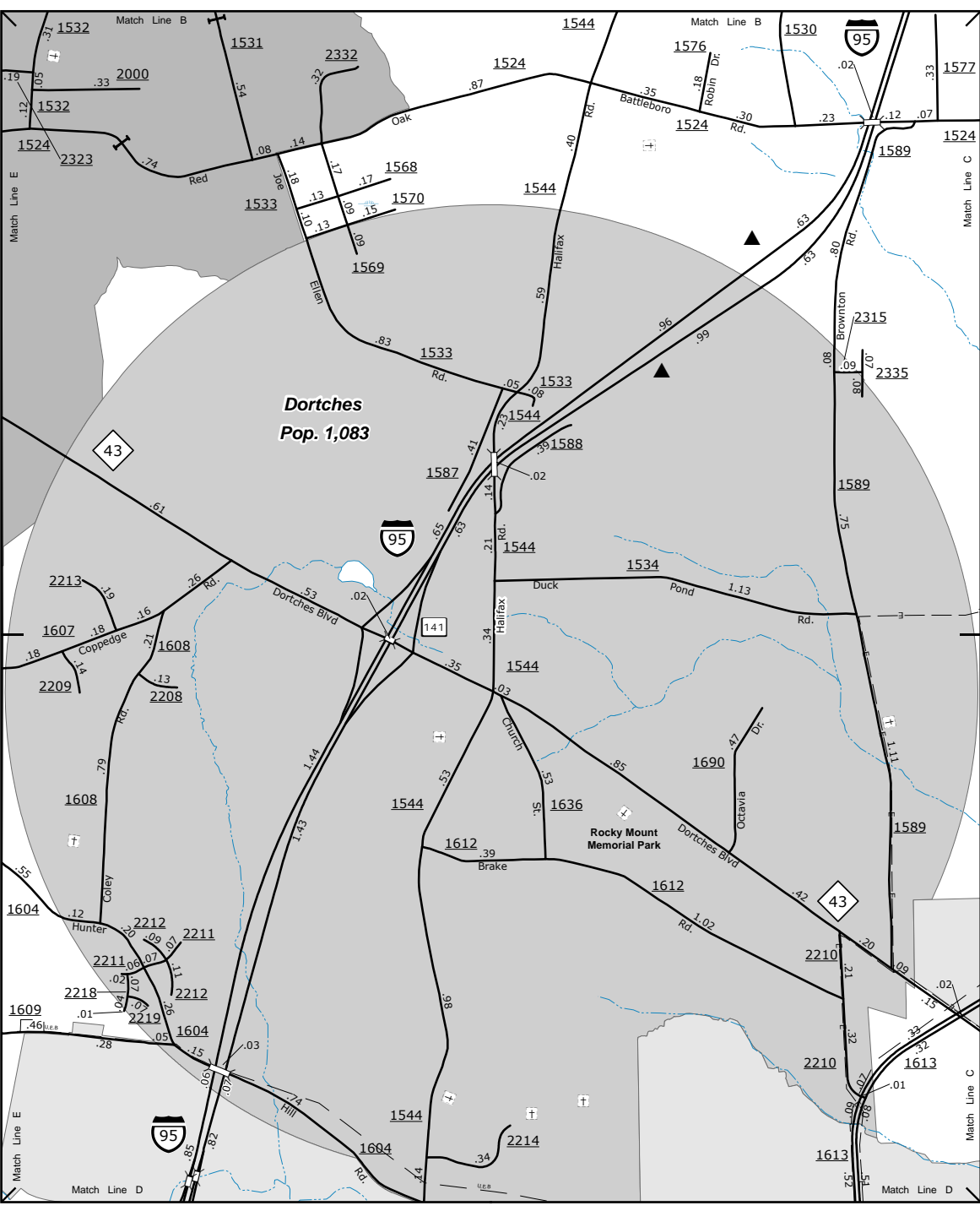
Momeyer
Pop. 277



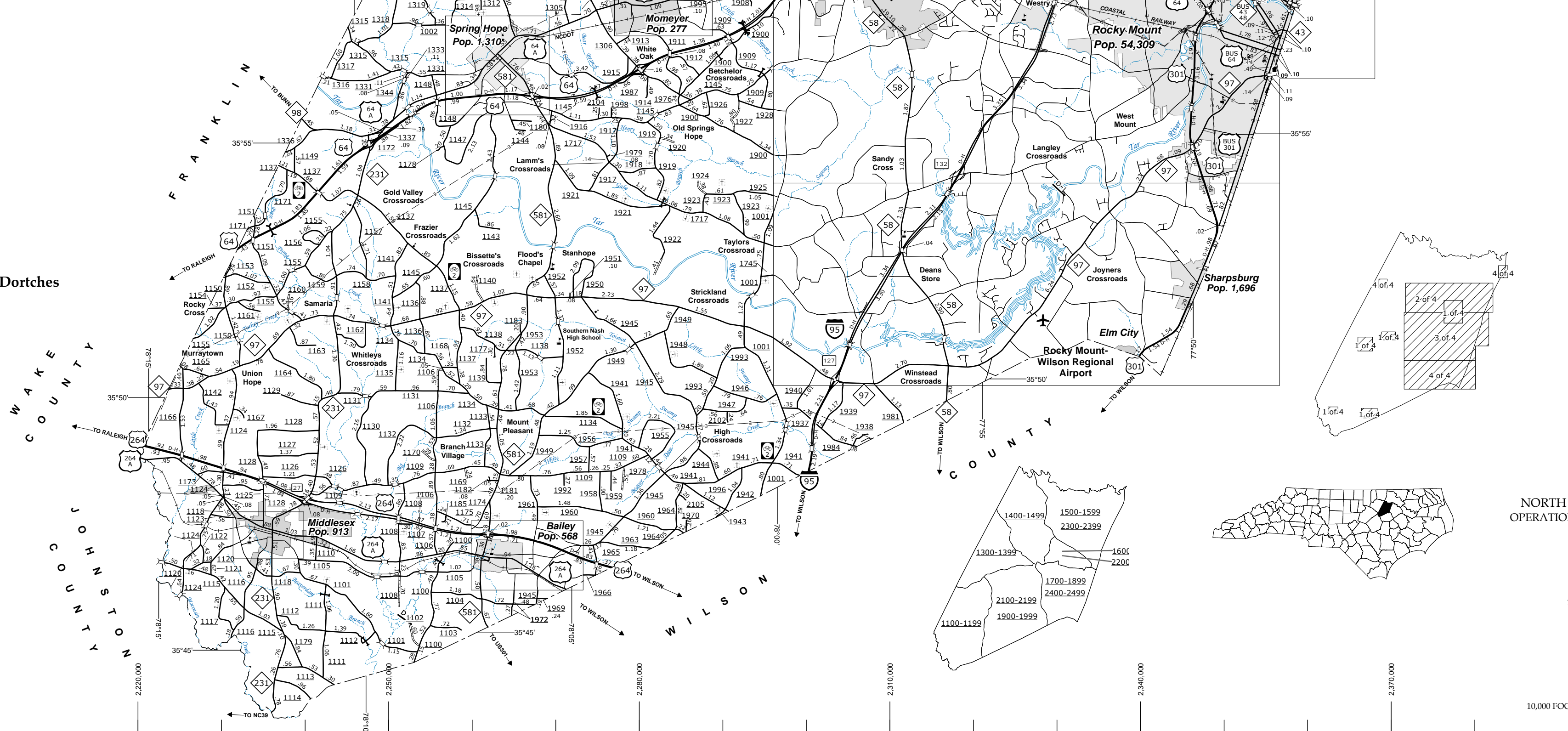
Middlesex
Pop. 913



Bailey
Pop. 568



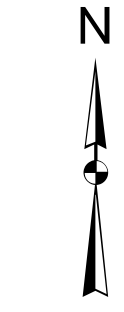
Dortches
Pop. 1,083



COPIES OF THIS MAP ARE AVAILABLE FROM THE PUBLIC INFORMATION DIVISION, N.C. DEPARTMENT OF TRANSPORTATION, ADDRESS: MAPPING SECTION, 4809 BERTHOUD AVENUE, RALEIGH, NC 27635.

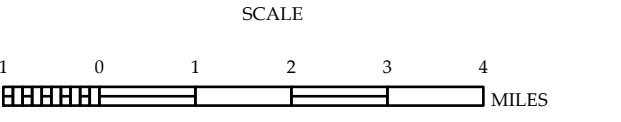
LEGEND

- UNPAVED SURFACE ROAD
- HARD SURFACE ROAD
- NEW SYSTEM ROADS
- DIVIDED HIGHWAY WITH PAVEMENT
- PROPOSED LOCATION
- BLUE BRIDGE PARKWAY
- INTERSECTION DISTANCE
- TRAFFIC CIRCLE
- DETAILED HIGHWAY INTERCHANGE
- HIGHWAY BRIDGE
- RAILROAD BRIDGE
- DRAW SPAN ON BRIDGE
- PEDESTRIAN BRIDGE
- PEDESTRIAN WALKWAY
- PEDESTRIAN UNDERPASS
- VEHICULAR UNDERPASS
- FORD
- TUNNEL
- CULVERT
- PIPE
- INTERSTATE HIGHWAY
- U.S. NUMBERED HIGHWAY
- N.C. NUMBERED HIGHWAY
- U.S. NUMBERED BICYCLE ROUTE
- N.C. NUMBERED BICYCLE ROUTE
- INTERSTATE INTERCHANGE NUMBER
- SECONDARY ROAD NUMBER
- UTILITY LINES
- RAILROAD
- RAILROAD STATION
- GRADE CROSSING
- INSET AREA
- NATIONAL FOREST BOUNDARY
- RESERVATION OR PARK BOUNDARY
- STATE FOREST BOUNDARY
- STATE GAMELAND BOUNDARY
- FEDERAL GAMELAND BOUNDARY
- MILITARY RESERVATION BOUNDARY
- STATE LINE
- COUNTY LINE
- CITY LIMIT
- FERRY ROUTE
- NARROW CREEK OR STREAM
- WIDE RIVER OR CREEK
- RESERVOIR, POND OR LAKE WITH ISLAND
- DAM OR DAM WITH LOCK
- WATERFALL
- SWAMP
- COMMUNITY, TOWN OR CITY CENTER
- COUNTY SEAT
- STATE CAPITAL
- SCHOOL
- COLLEGE OR UNIVERSITY
- HOSPITAL
- COAST GUARD STATION
- CHURCH
- CHURCH WITH CEMETERY
- CEMETERY
- PATROL STATION
- CORRECTION OR PENAL INSTITUTION
- QUARRY
- MINES OR PIT
- HIGHWAY GARAGE OR MAINT. YARD
- HIGHWAY DIV. OR INST. OFFICE
- MILITARY POST
- WILDLIFE REFUGE
- WEIGH STATION
- WILDLIFE REFUGES
- HISTORICAL SITE
- POINTS OF INTEREST
- STATE FOREST
- LIGHTHOUSE
- MOUNTAIN SUMMIT
- OVERLOOK
- GEODETIC MARKER
- REST AREA
- VISITOR CTR REST AREA
- WELCOME CTR REST AREA
- AIRPORT
- MILITARY AIRPORT
- HELIPORT



**NASH COUNTY
NORTH CAROLINA**

PREPARED BY THE
NORTH CAROLINA DEPARTMENT OF TRANSPORTATION
OPERATIONS PROGRAM MANAGEMENT UNIT - MAPPING SECTION
IN COOPERATION WITH THE
U.S. DEPARTMENT OF TRANSPORTATION
FEDERAL HIGHWAY ADMINISTRATION



SCALE FOR ENLARGEMENTS

10,000 FOOT GRID BASED ON NORTH CAROLINA PLANE COORDINATE SYSTEM
LAMBERT CONFORMAL CONIC PROJECTION