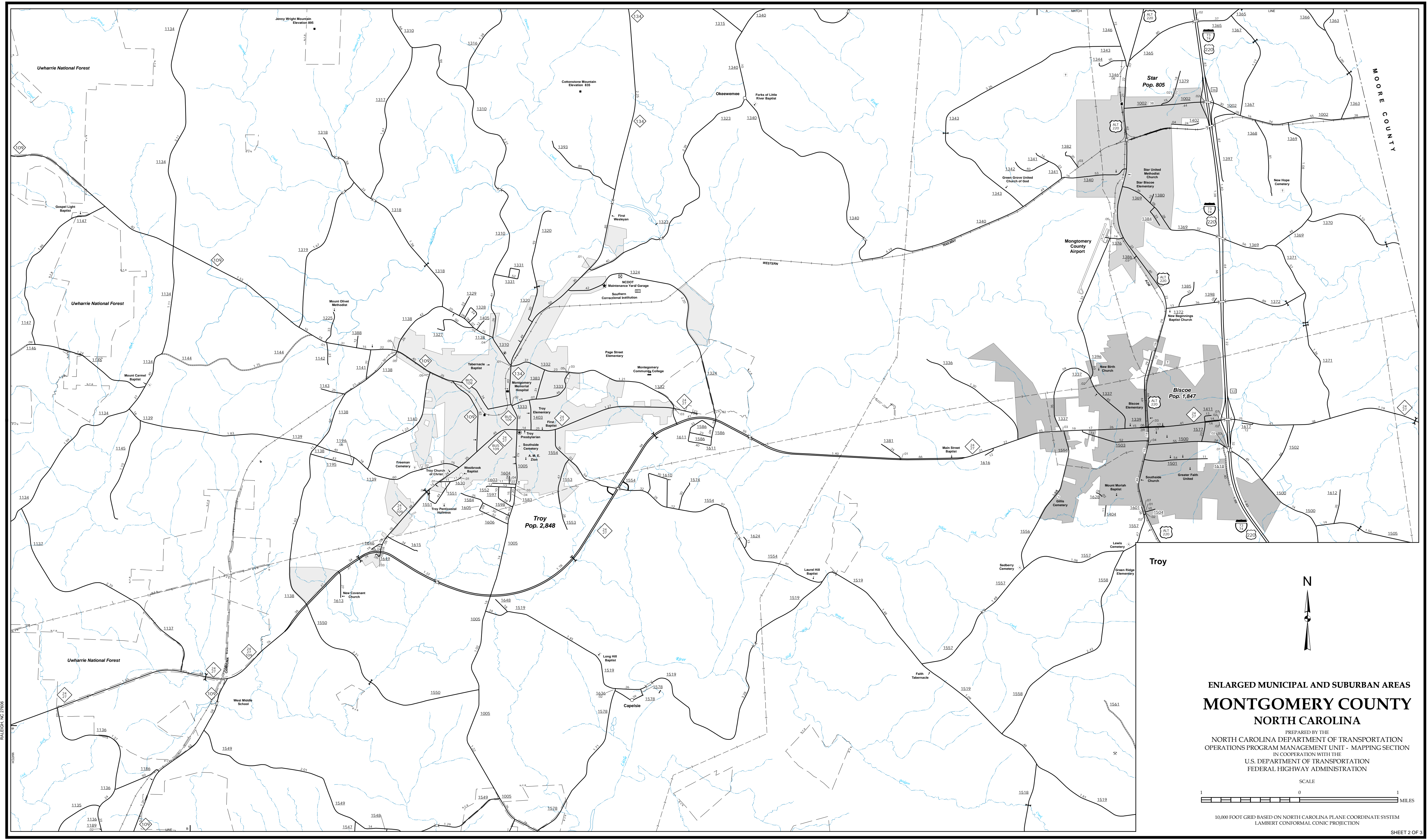


The Mapping Section's goal is to provide the most accurate and current information possible. Map data is compiled from various sources, including aerial photography, ground surveys, and other data. The data is processed and the accuracy of the data is not guaranteed. The data is processed and the accuracy of the data is not guaranteed. The data is processed and the accuracy of the data is not guaranteed.

COPIES OF THIS MAP ARE AVAILABLE
 AT THE
 N.C. DEPARTMENT OF TRANSPORTATION
 ADDRESS
 609 BERTHOLD
 RALEIGH, NC 27609



Troy

N

**ENLARGED MUNICIPAL AND SUBURBAN AREAS
 MONTGOMERY COUNTY
 NORTH CAROLINA**

PREPARED BY THE
 NORTH CAROLINA DEPARTMENT OF TRANSPORTATION
 OPERATIONS PROGRAM MANAGEMENT UNIT - MAPPING SECTION
 IN COOPERATION WITH THE
 U.S. DEPARTMENT OF TRANSPORTATION
 FEDERAL HIGHWAY ADMINISTRATION

SCALE
 1 0 1
 MILES

10,000 FOOT GRID BASED ON NORTH CAROLINA PLANE COORDINATE SYSTEM
 LAMBERT CONFORMAL CONIC PROJECTION