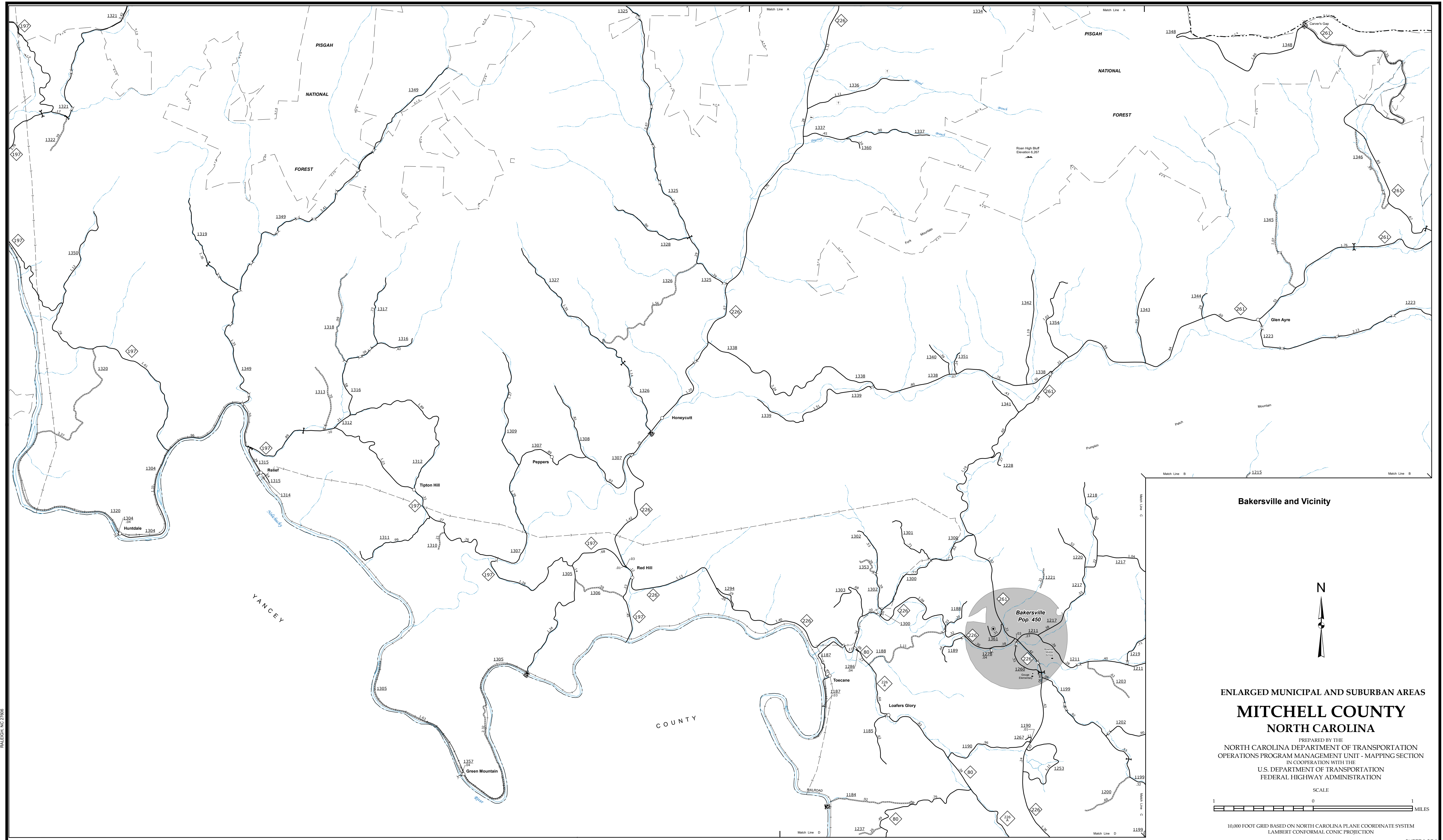


The Mapping Section's goal is to provide the most accurate and current information possible. Map data is compiled from various sources and is subject to change. The information shown on this map is for informational purposes only and does not constitute a warranty. The Mapping Section is not responsible for any errors or omissions on this map. For additional information, visit <http://www.ncdot.gov/transportation/MSAU/MSAU.aspx> and click on Data Providers or contact us by phone at (919) 855-8480.

COPIES OF THIS MAP ARE AVAILABLE FOR PURCHASE AT A PUBLIC NOMINAL COST. ADDRESS: N.C. DEPARTMENT OF TRANSPORTATION, MS/AU, MAPPING SECTION, 4801 BERNAL RD., RALEIGH, NC 27606

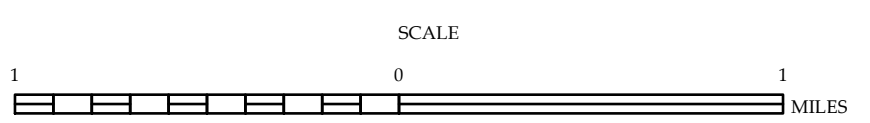


**Bakersville and Vicinity**



**ENLARGED MUNICIPAL AND SUBURBAN AREAS  
MITCHELL COUNTY  
NORTH CAROLINA**

PREPARED BY THE  
NORTH CAROLINA DEPARTMENT OF TRANSPORTATION  
OPERATIONS PROGRAM MANAGEMENT UNIT - MAPPING SECTION  
IN COOPERATION WITH THE  
U.S. DEPARTMENT OF TRANSPORTATION  
FEDERAL HIGHWAY ADMINISTRATION



10,000 FOOT GRID BASED ON NORTH CAROLINA PLANE COORDINATE SYSTEM  
LAMBERT CONFORMAL CONIC PROJECTION