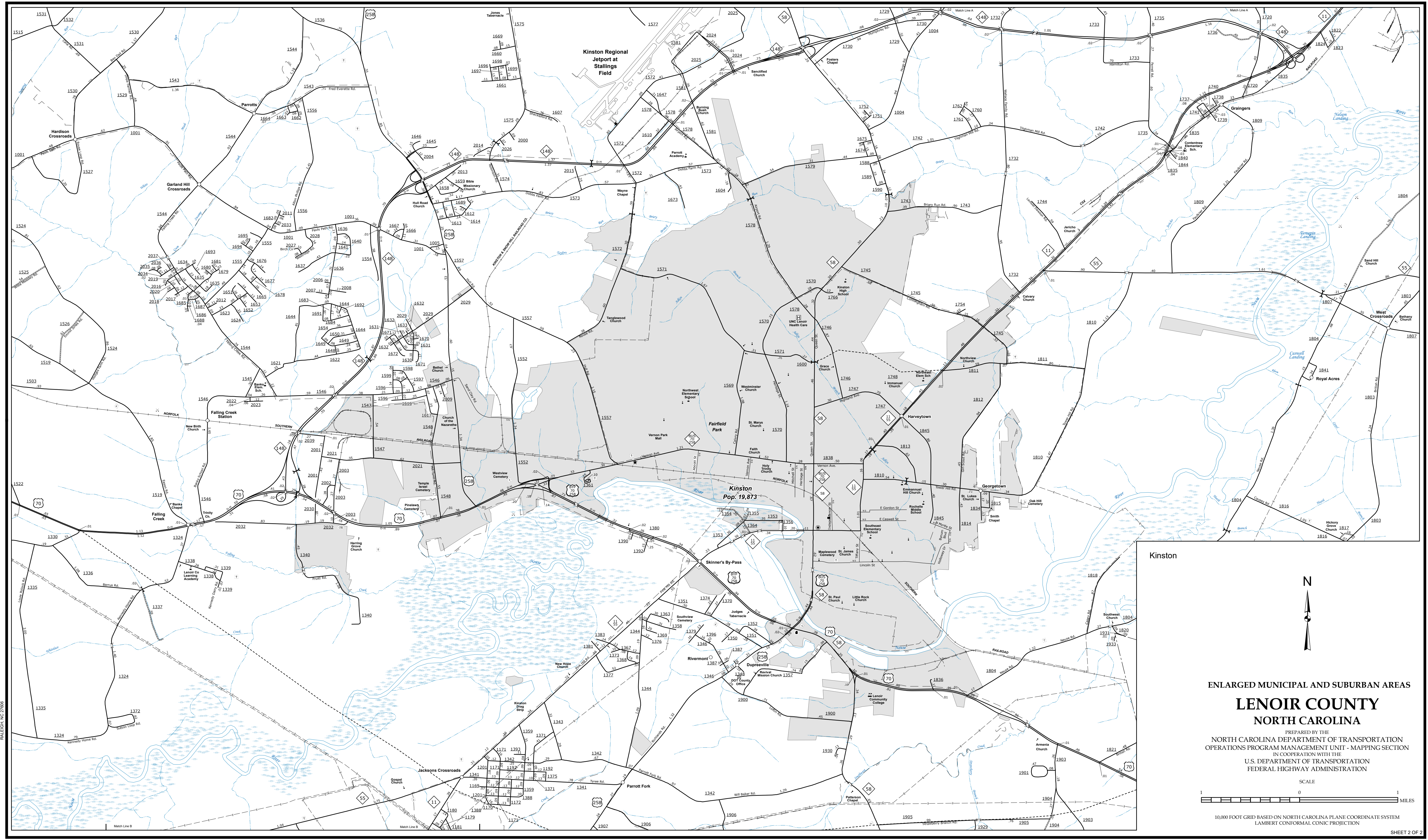


The Mapping Section's goal is to provide the most accurate and current information possible. Map data is compiled from various sources including aerial photography, GIS data, and other public information. The map includes all roads, water features, and other geographic information. The map is not a substitute for a professional survey. For more information, visit www.ncdot.gov/transportation/mapping and click on Data Providers or contact us by phone at (919) 855-8480.

COPIES OF THIS MAP ARE AVAILABLE FOR PURCHASE AT A NOMINAL COST. ADDRESS: N.C. DEPARTMENT OF TRANSPORTATION, MSAU-MAPPING SECTION, 4801 BERRY RD., RALEIGH, NC 27609



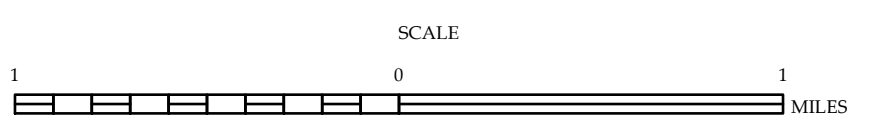
Kinston

ENLARGED MUNICIPAL AND SUBURBAN AREAS

LENOIR COUNTY

NORTH CAROLINA

PREPARED BY THE
NORTH CAROLINA DEPARTMENT OF TRANSPORTATION
OPERATIONS PROGRAM MANAGEMENT UNIT - MAPPING SECTION
IN COOPERATION WITH THE
U.S. DEPARTMENT OF TRANSPORTATION
FEDERAL HIGHWAY ADMINISTRATION



10,000 FOOT GRID BASED ON NORTH CAROLINA PLANE COORDINATE SYSTEM
LAMBERT CONFORMAL CONIC PROJECTION