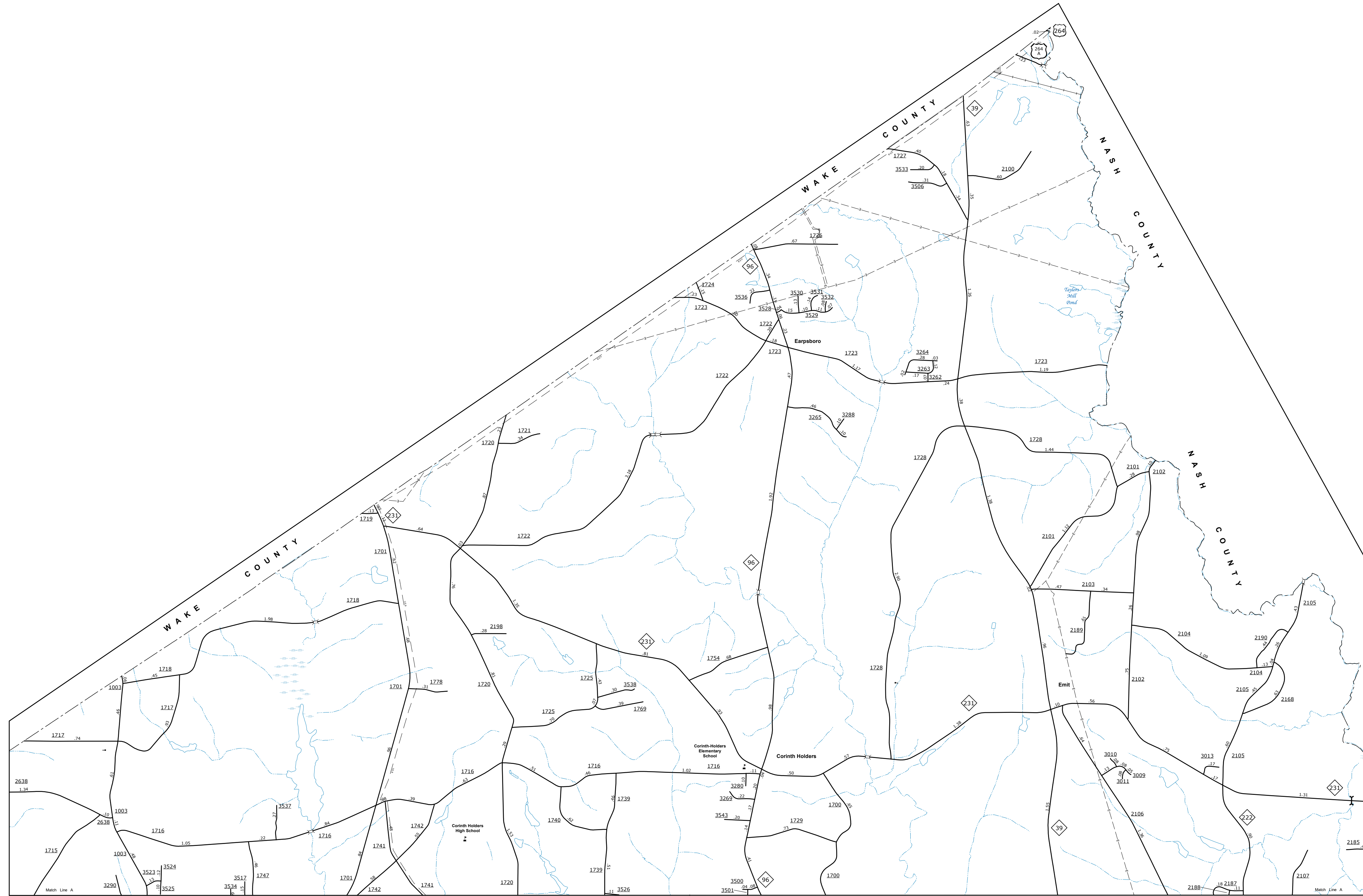


The Mapping Section's goal is to provide the most accurate and current information possible. Map data is compiled from various sources and is subject to change. While every effort is made to ensure the accuracy of the information, the user should verify the information before using it for any purpose. The user should also be aware that the information is not intended to be used for any purpose other than the one for which it was intended. For additional information, visit <http://www.ncdot.gov/transportation/mapping> and click on Data Provider or contact us by phone at (919) 855-8480.

COPIES OF THIS MAP ARE AVAILABLE AT THE PUBLIC INFORMATION COST ADDRESS:  
 N.C. DEPARTMENT OF TRANSPORTATION  
 MAPS & MAPPING SECTION  
 4809 BERRY LANE  
 RALEIGH, NC 27608



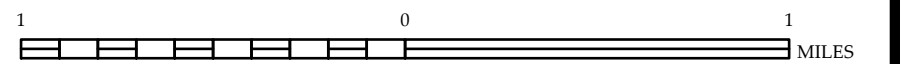
Corinth Holders



ENLARGED MUNICIPAL AND SUBURBAN AREAS  
**JOHNSTON COUNTY**  
 NORTH CAROLINA

PREPARED BY THE  
 NORTH CAROLINA DEPARTMENT OF TRANSPORTATION  
 OPERATIONS PROGRAM MANAGEMENT UNIT - MAPPING SECTION  
 IN COOPERATION WITH THE  
 U.S. DEPARTMENT OF TRANSPORTATION  
 FEDERAL HIGHWAY ADMINISTRATION

SCALE



10,000 FOOT GRID BASED ON NORTH CAROLINA PLANE COORDINATE SYSTEM  
 LAMBERT CONFORMAL CONIC PROJECTION

SHEET 2 OF 13