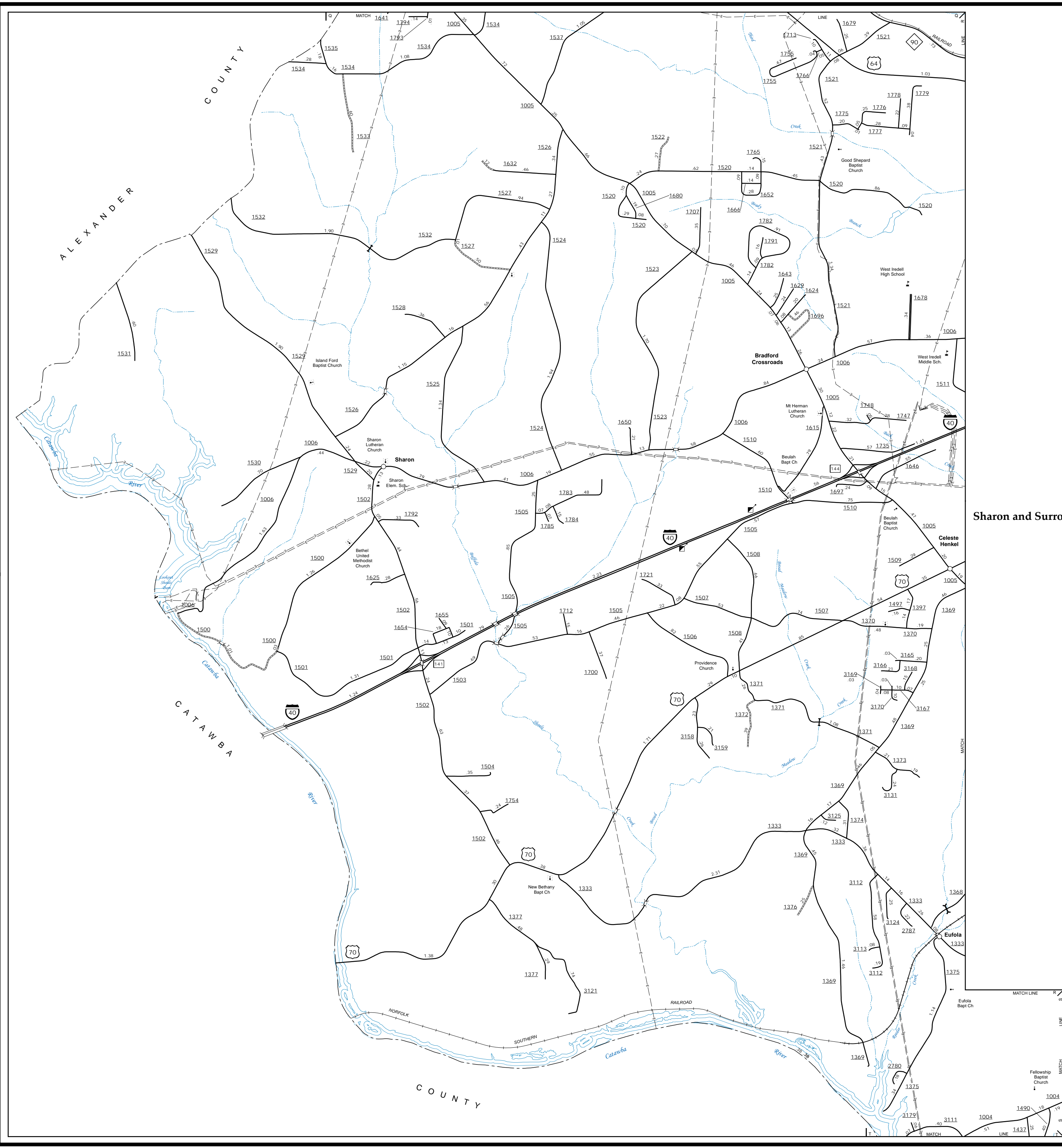
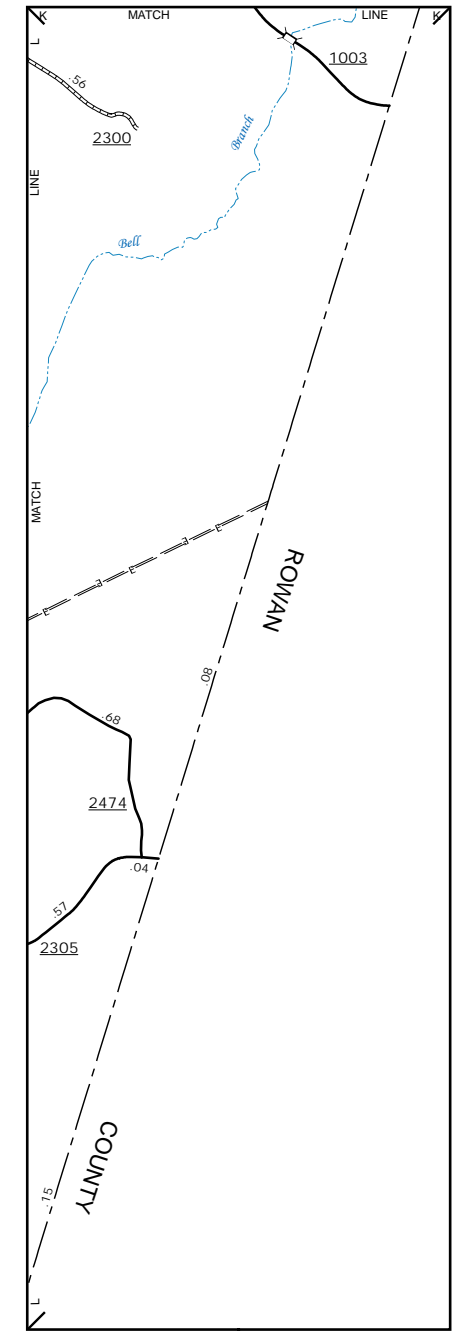


The Mapping Section's goal is to provide the most accurate and current information possible. Map data is compiled from various sources including aerial photography, ground surveys, and other available information. As a result, the accuracy of the map cannot be guaranteed. The map includes information that is not intended to be used for any purpose other than that for which it was prepared. The information shown on this map was last updated in July 2022. For additional information, visit <http://www.ncdot.gov/Information/Maps/Mapping.aspx> and click on Data Providers or contact us by phone at (919) 835-8480.

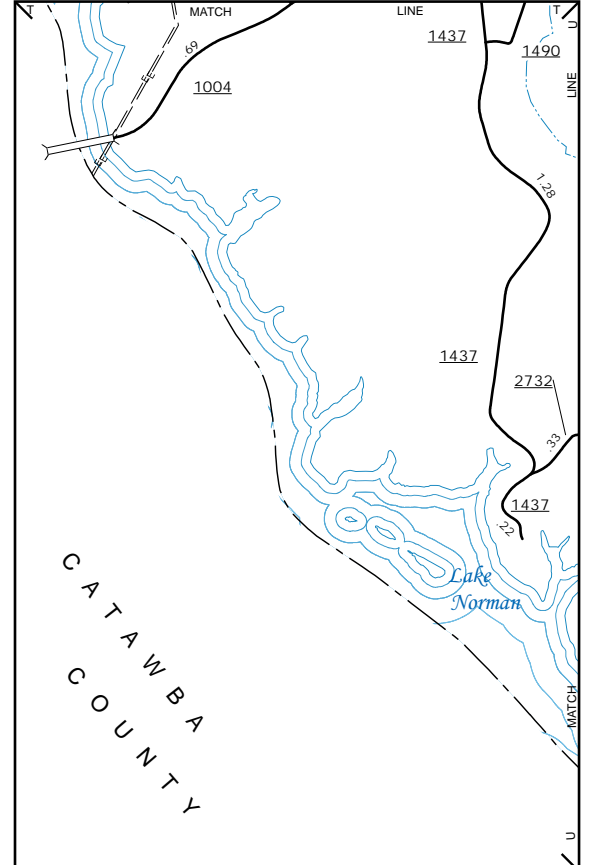
COPIES OF THIS MAP ARE AVAILABLE FOR PURCHASE AT A NOMINAL COST. ADDRESS: N.C. DEPARTMENT OF TRANSPORTATION, MSAU - MAPPING SECTION, 4805 BERNI, C.D., RALEIGH, NC 27606



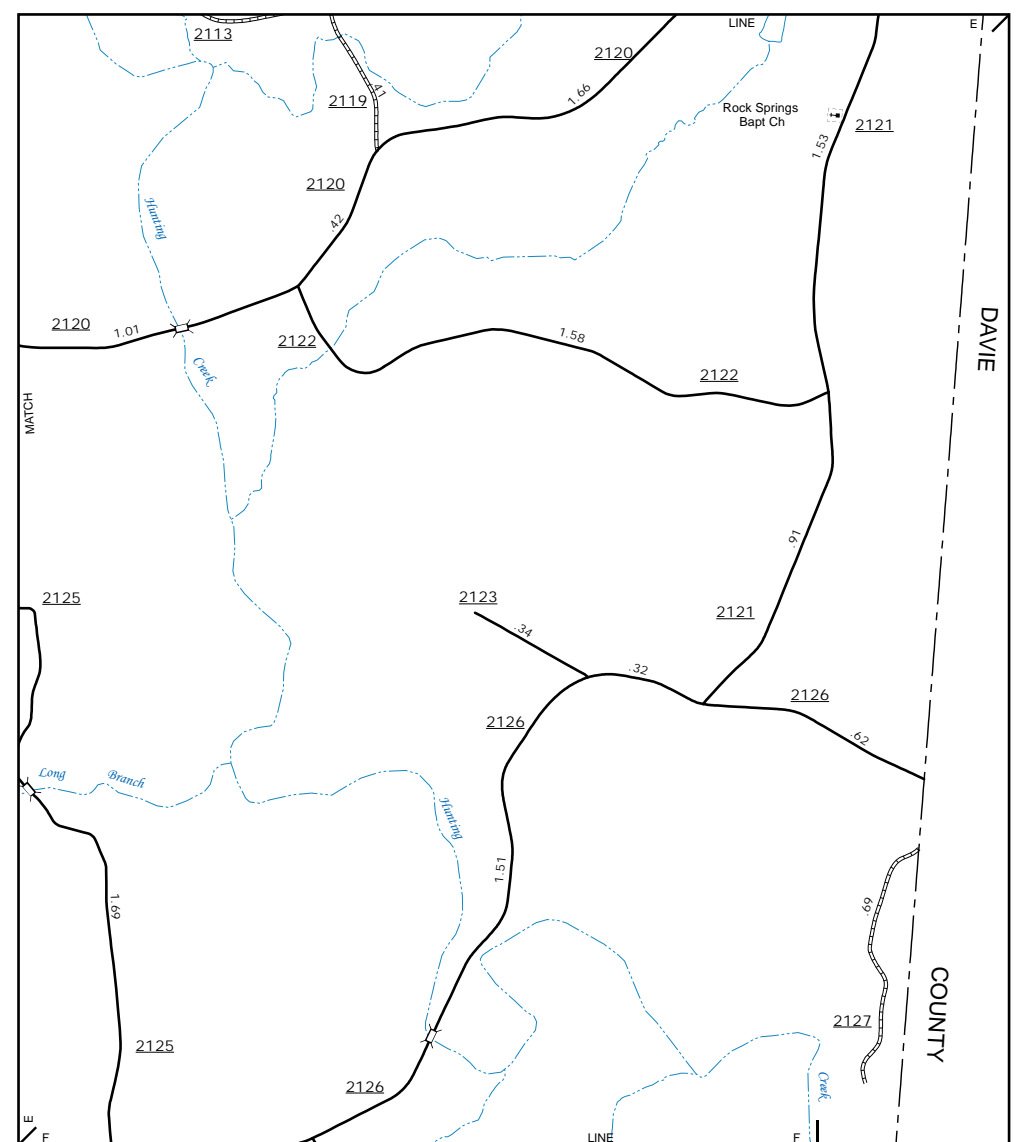
Sharon and Surrounding Area



Inset 2



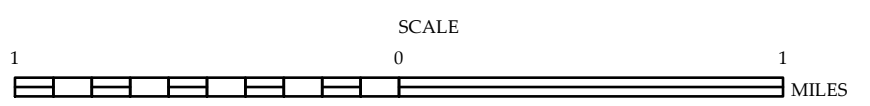
Inset 3



Rock Springs Bapt. Ch. Area



ENLARGED MUNICIPAL AND SUBURBAN AREAS  
**IREDELL COUNTY**  
 NORTH CAROLINA  
 PREPARED BY THE  
 NORTH CAROLINA DEPARTMENT OF TRANSPORTATION  
 OPERATIONS PROGRAM MANAGEMENT UNIT - MAPPING SECTION  
 IN COOPERATION WITH THE  
 U.S. DEPARTMENT OF TRANSPORTATION  
 FEDERAL HIGHWAY ADMINISTRATION



10,000 FOOT GRID BASED ON NORTH CAROLINA PLANE COORDINATE SYSTEM  
 LAMBERT CONFORMAL CONIC PROJECTION