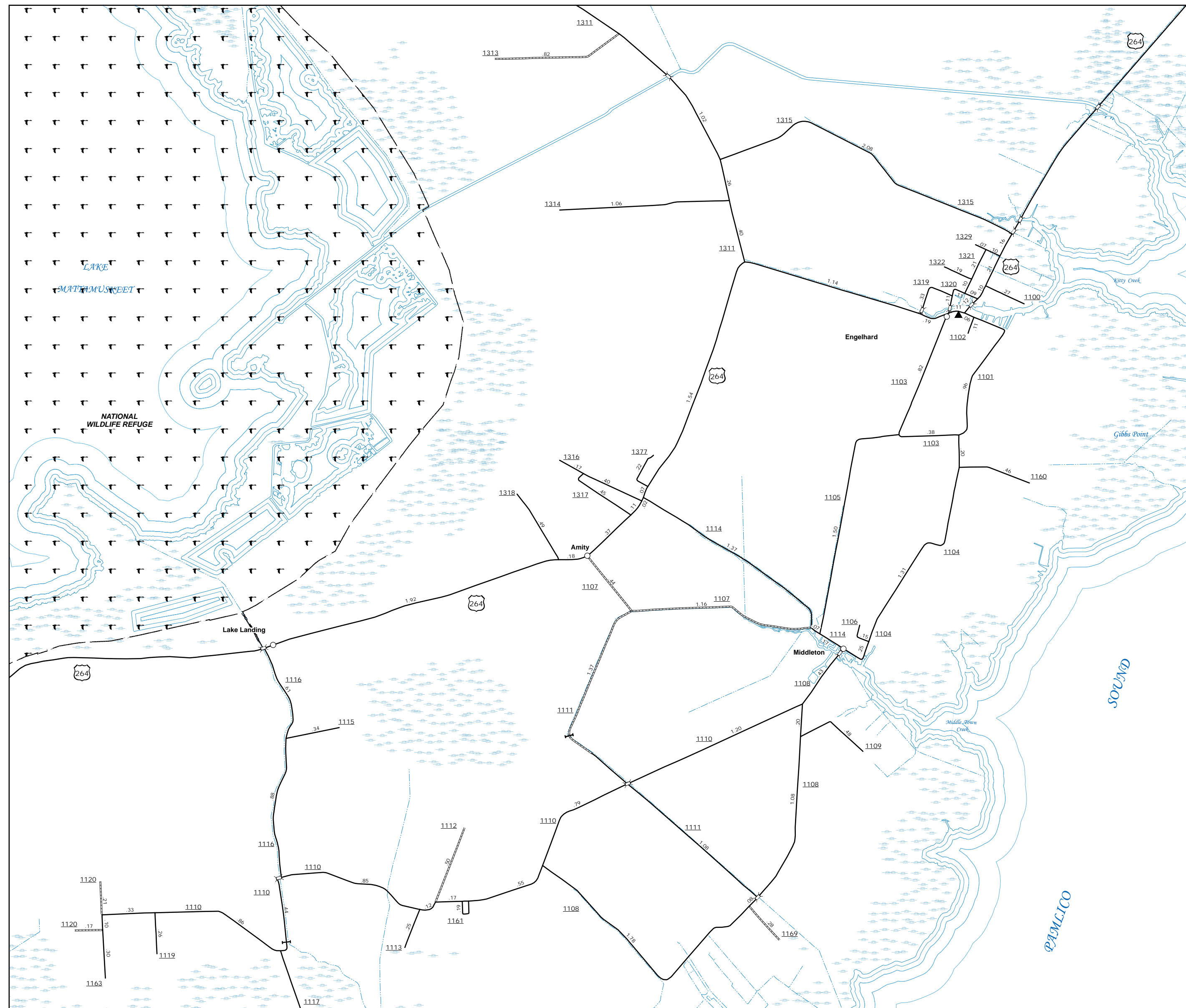
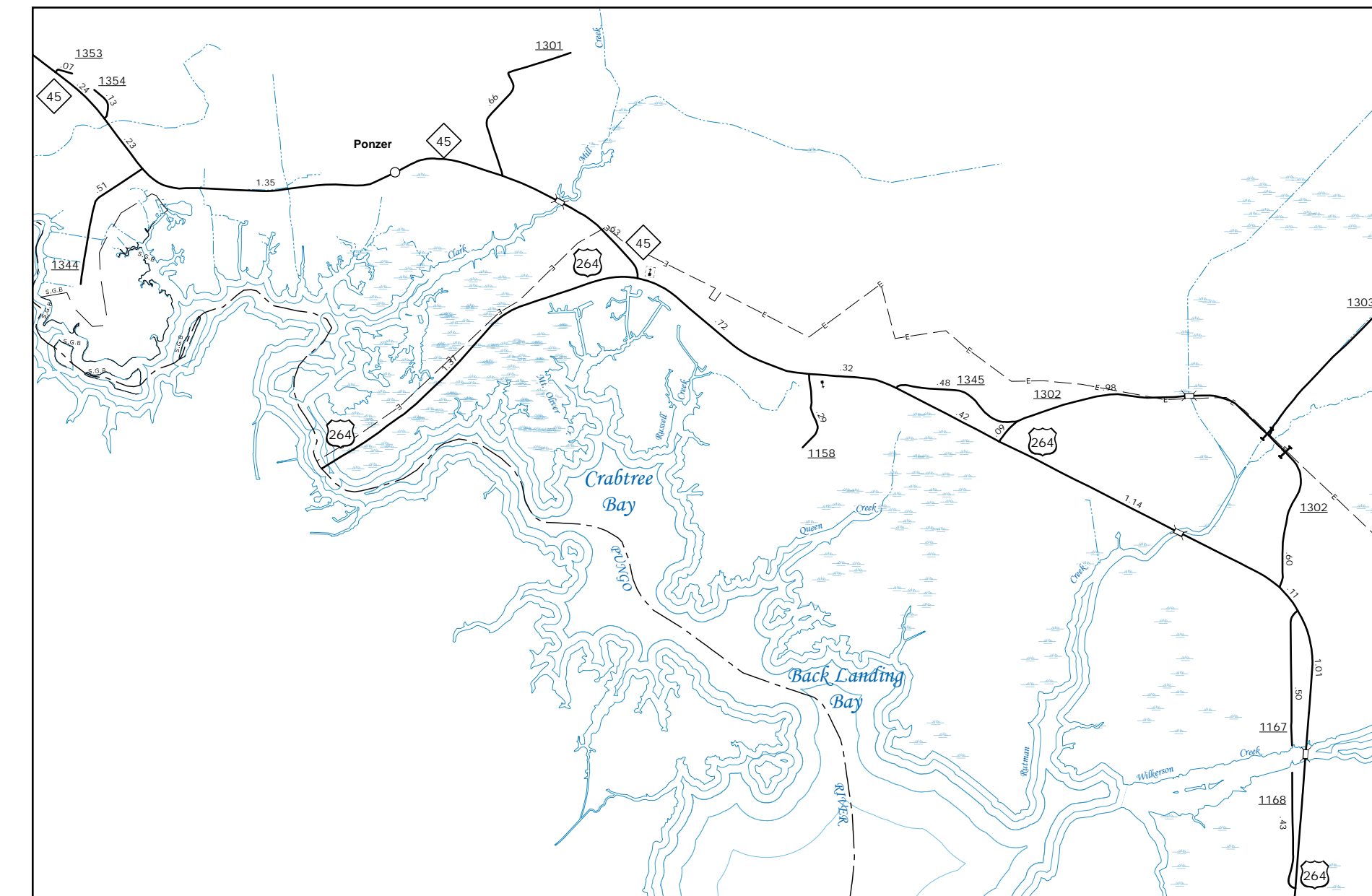


The Mapping Section's goal is to provide the most accurate and current information possible. Map data is compiled from various sources and may not be 100% accurate. The information shown on this map was last updated in June 2022. For additional information, visit <http://www.ncdot.gov/transportation/mapping> and click on Data Providers or contact us by phone at (919) 855-8480.

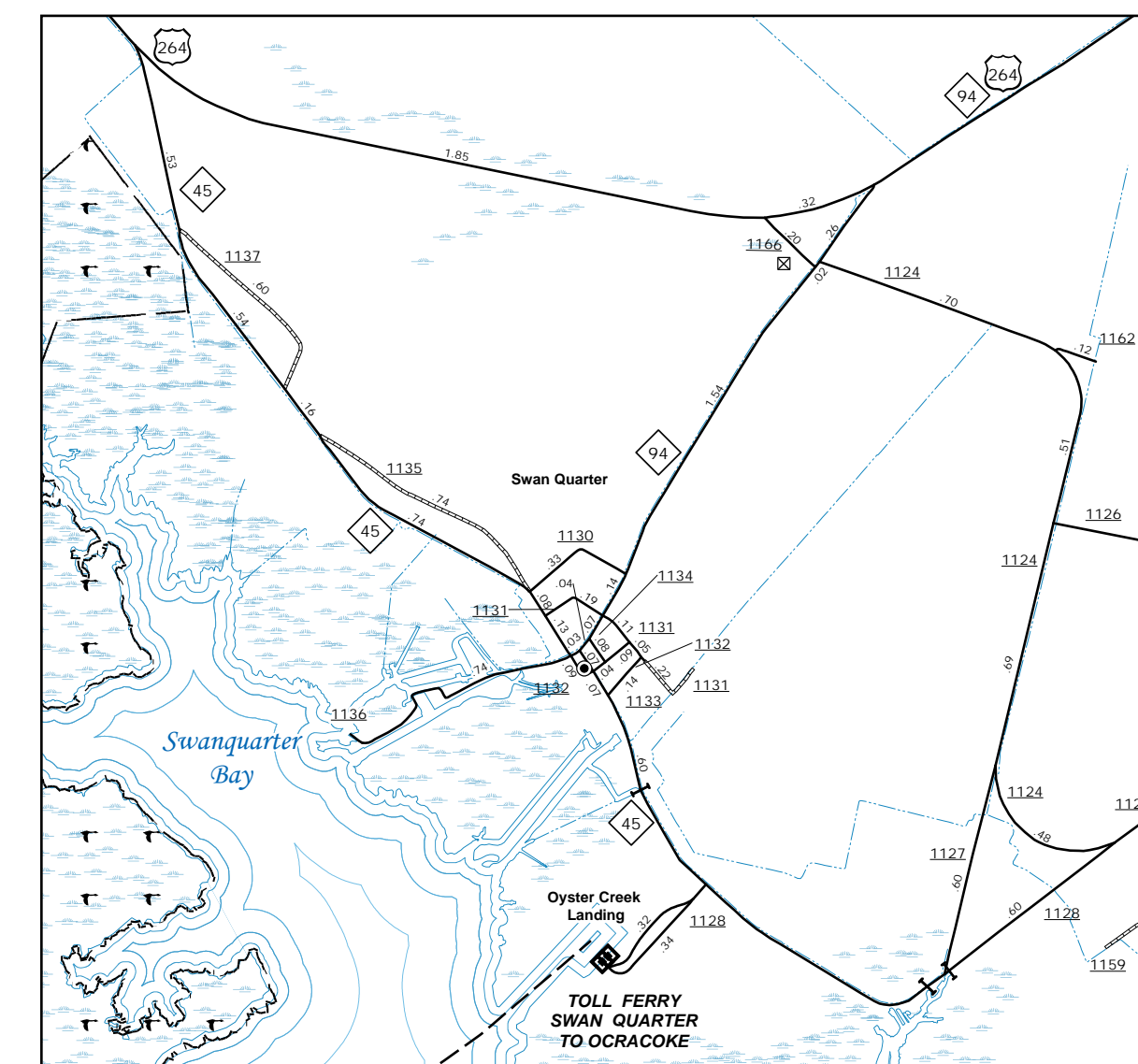
COPIES OF THIS MAP ARE AVAILABLE FOR PURCHASE AT A PUBLIC INFORMATION COST. ADDRESS: N.C. DEPARTMENT OF TRANSPORTATION, OPERATIONS PROGRAM MANAGEMENT UNIT - MAPPING SECTION, 4809 BERRY LANE, RALEIGH, NC 27606



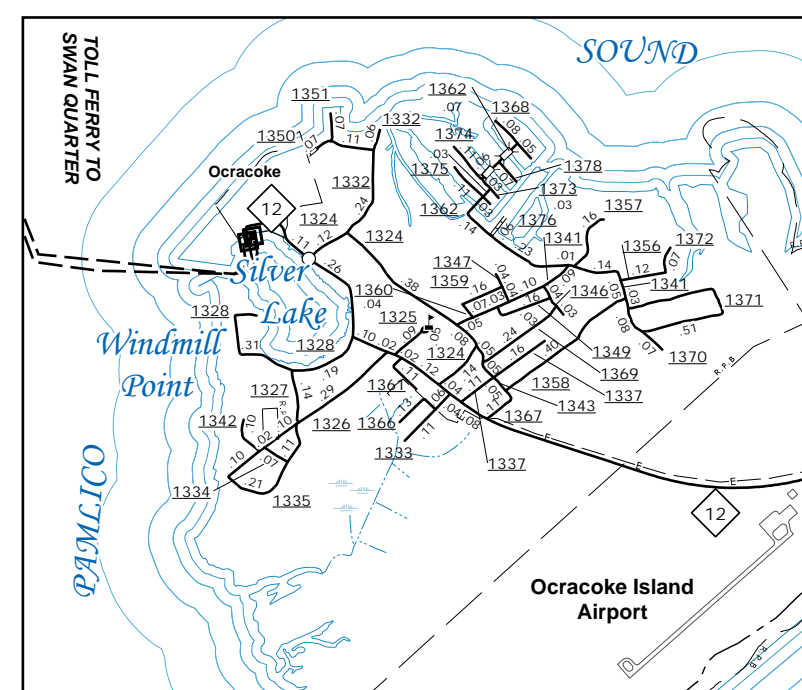
Lake Landing, Amity Engelhard, and Middleton



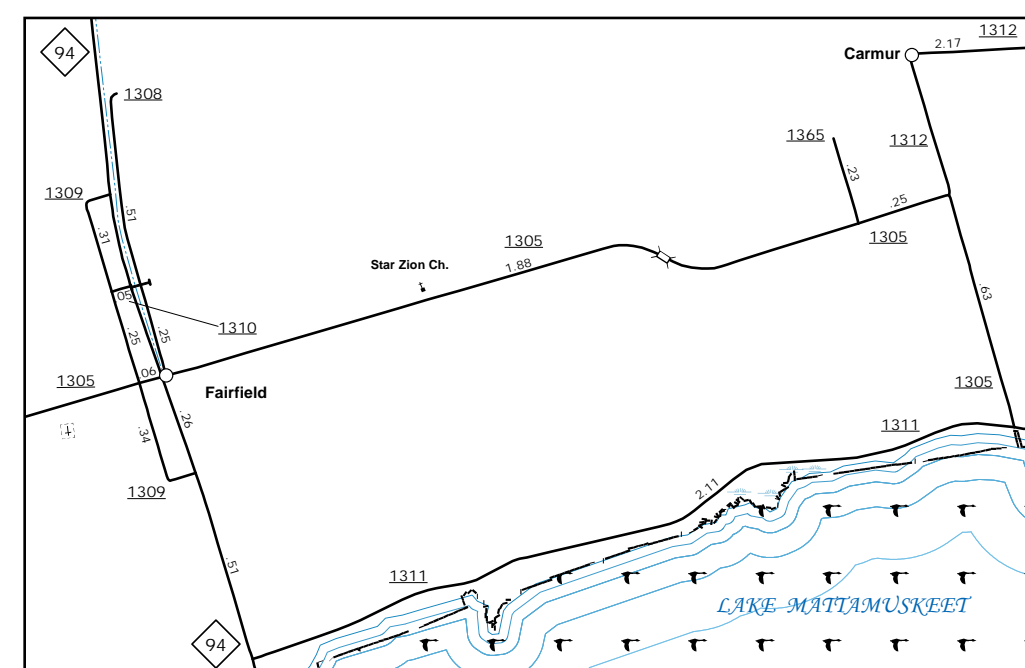
Ponzer



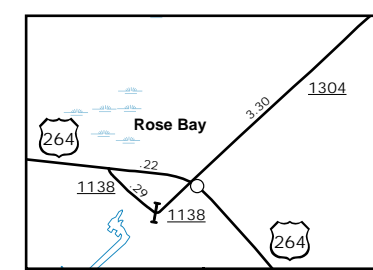
Swan Quarter and Oyster Creek Landing



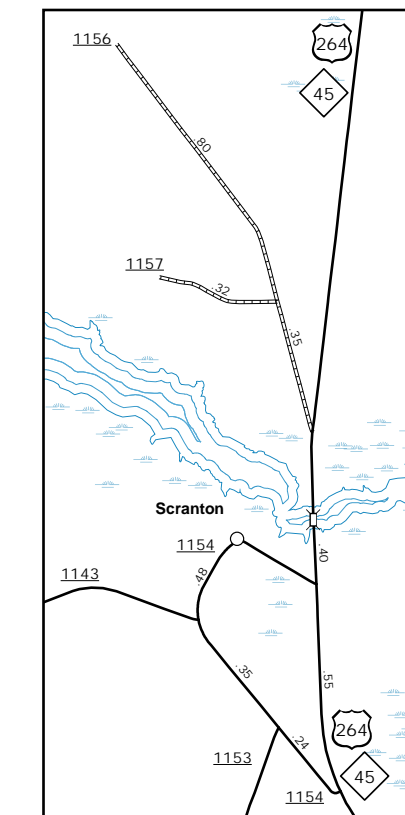
Ocracoke



Fairfield



Rose Bay

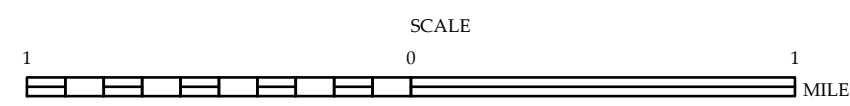


Scranton



ENLARGED MUNICIPAL AND SUBURBAN AREAS  
**HYDE COUNTY**  
NORTH CAROLINA

PREPARED BY THE  
NORTH CAROLINA DEPARTMENT OF TRANSPORTATION  
OPERATIONS PROGRAM MANAGEMENT UNIT - MAPPING SECTION  
IN COOPERATION WITH THE  
U.S. DEPARTMENT OF TRANSPORTATION  
FEDERAL HIGHWAY ADMINISTRATION



10,000 FOOT GRID BASED ON NORTH CAROLINA PLANE COORDINATE SYSTEM  
LAMBERT CONFORMAL CONIC PROJECTION