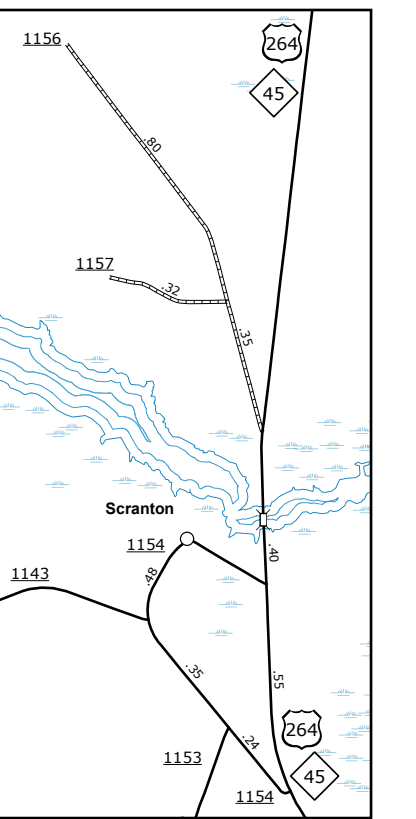
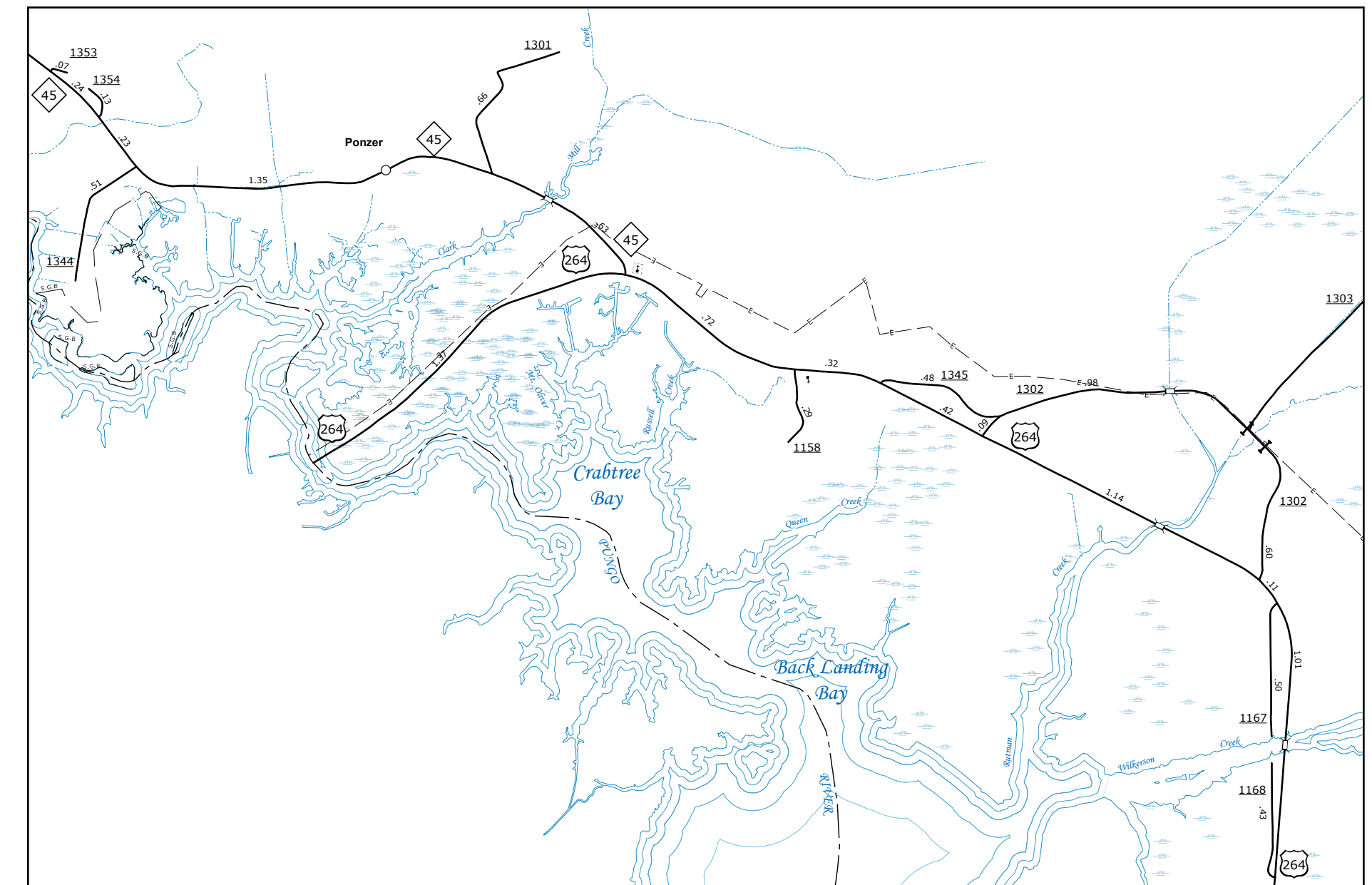
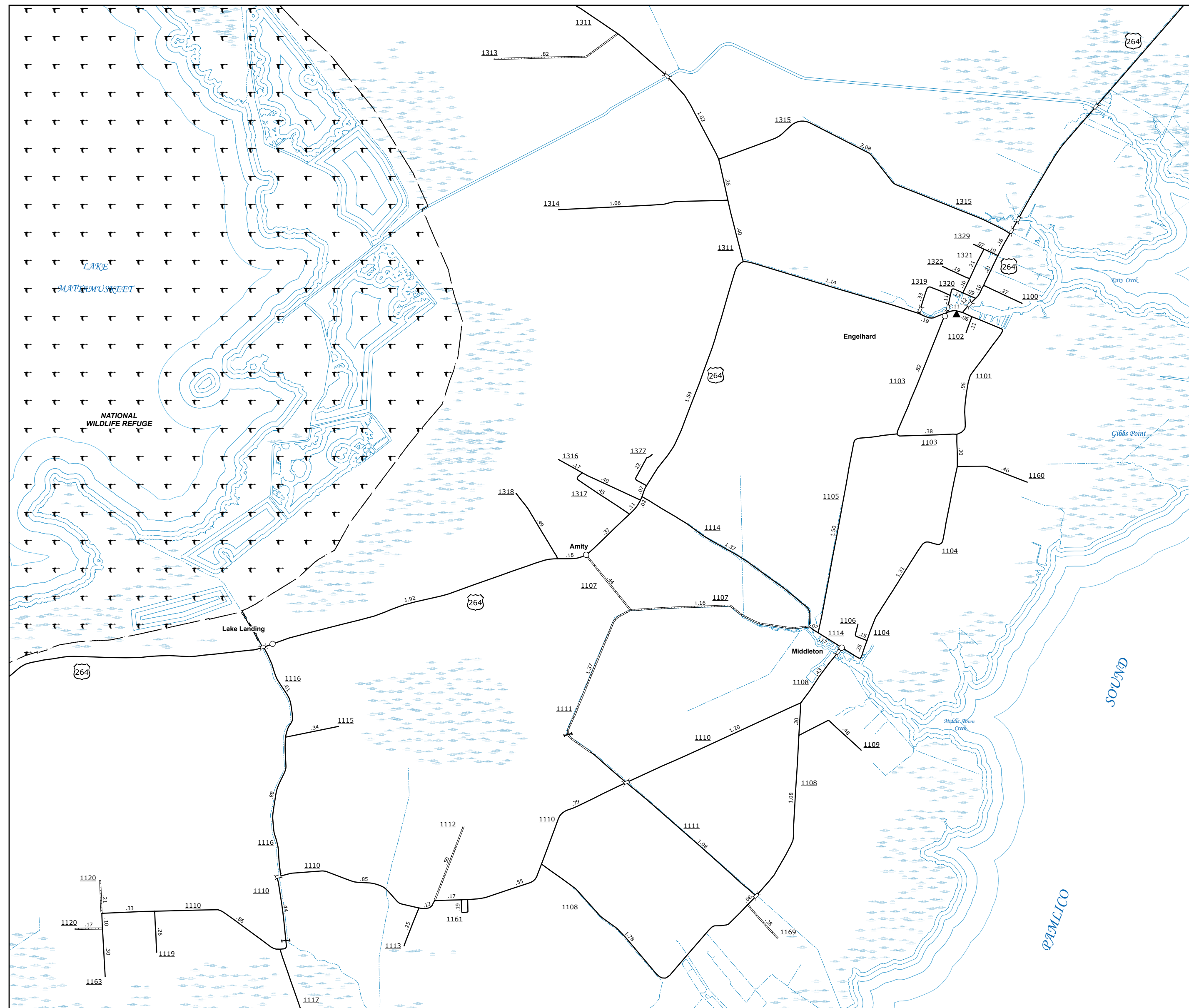
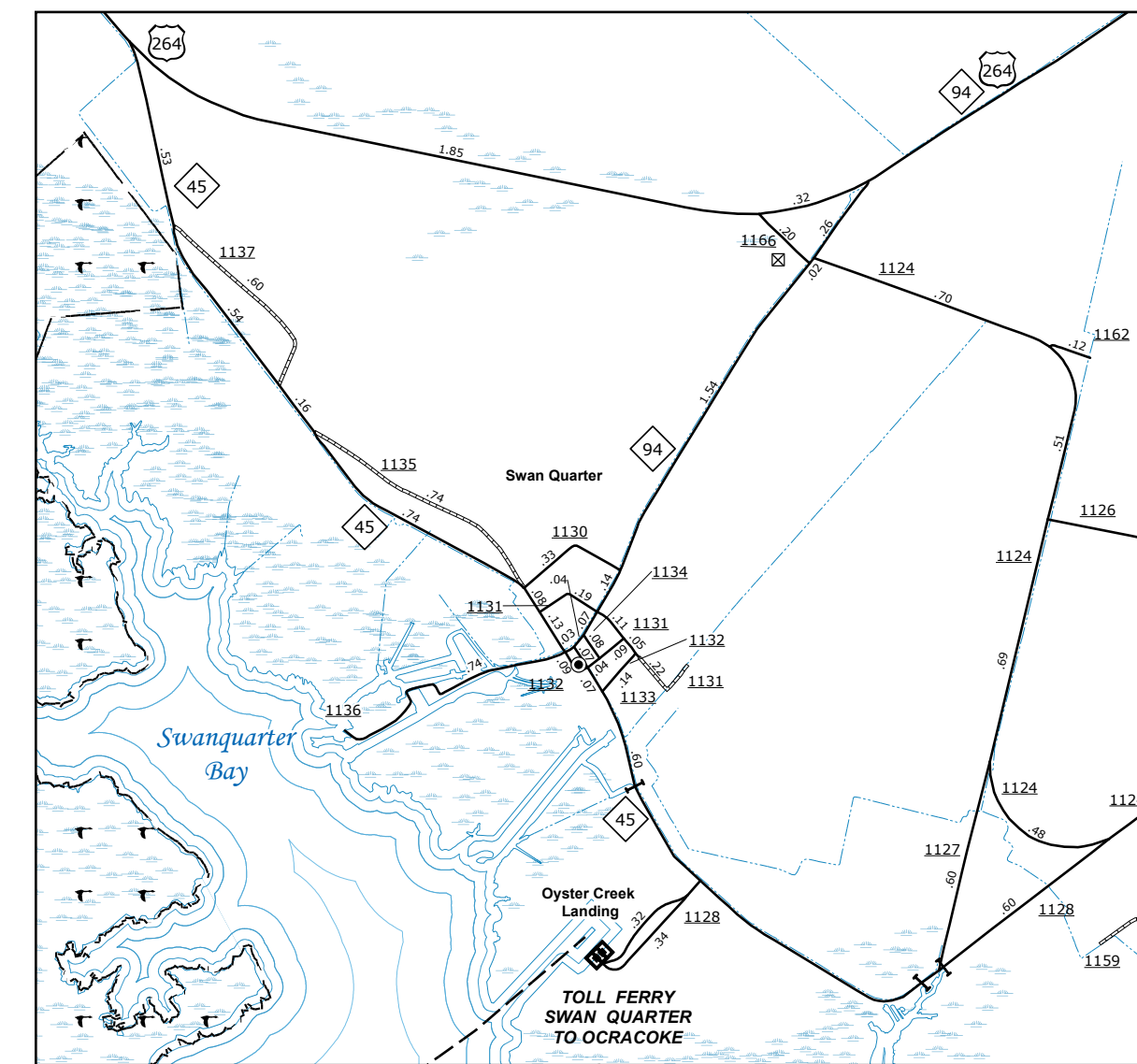


The Mapping Section's goal is to provide the most accurate and current information possible. Map data is compiled from various sources and is subject to change. The data is provided as a service and is not intended to be used for any purpose other than that for which it was provided. The map products are not intended to be used for any purpose other than that for which they were provided. The information shown on this map was last updated in June 2022. For additional information, visit <http://www.ncdot.gov/Travel/Map/MapInfo.aspx> and click on Data Providers or contact us by phone at (919) 855-8480.

COPIES OF THIS MAP ARE AVAILABLE FROM THE NORTH CAROLINA DEPARTMENT OF TRANSPORTATION OPERATIONS PROGRAM MANAGEMENT UNIT - MAPPING SECTION IN COOPERATION WITH THE U.S. DEPARTMENT OF TRANSPORTATION FEDERAL HIGHWAY ADMINISTRATION

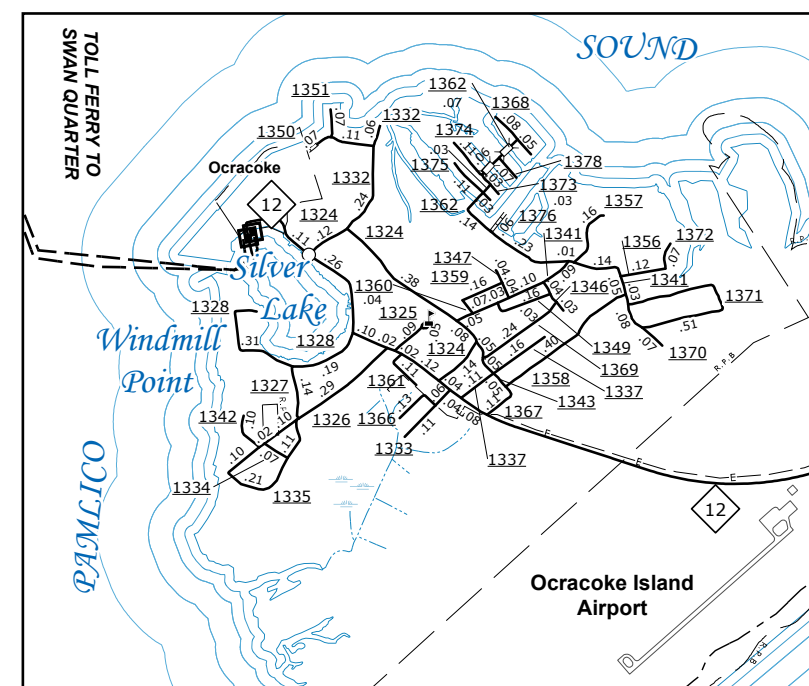


Scranton

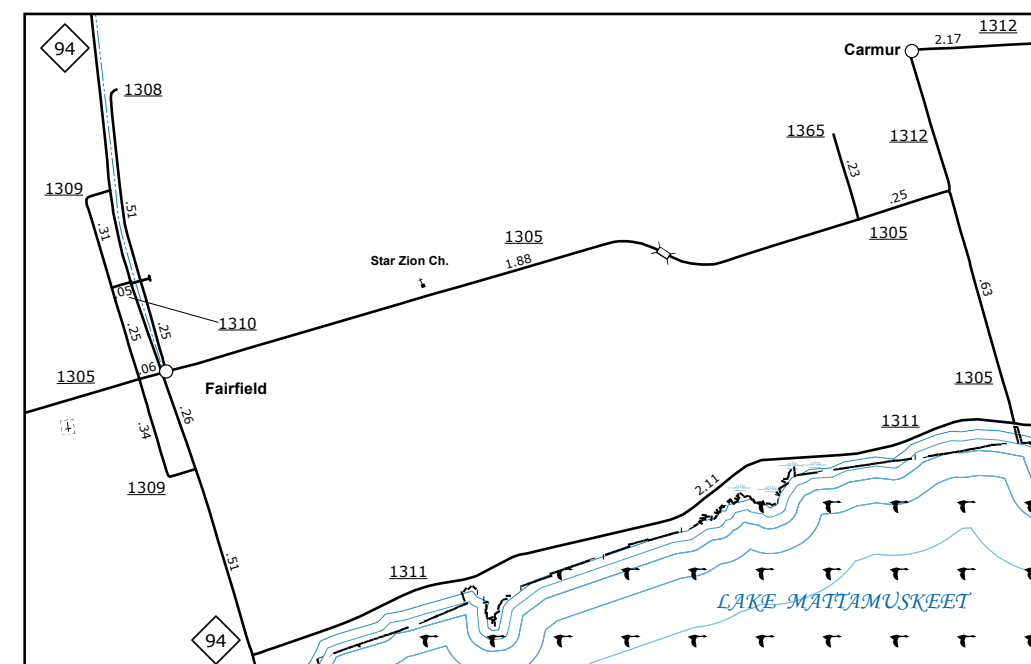


Ponzer

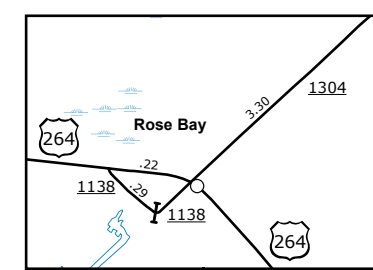
Swan Quarter and Oyster Creek Landing



Ocracoke



Fairfield

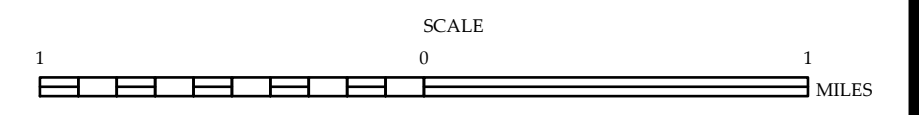


Rose Bay

Lake Landing, Amity Engelhard, and Middleton

ENLARGED MUNICIPAL AND SUBURBAN AREAS
HYDE COUNTY
NORTH CAROLINA

PREPARED BY THE
NORTH CAROLINA DEPARTMENT OF TRANSPORTATION
OPERATIONS PROGRAM MANAGEMENT UNIT - MAPPING SECTION
IN COOPERATION WITH THE
U.S. DEPARTMENT OF TRANSPORTATION
FEDERAL HIGHWAY ADMINISTRATION



10,000 FOOT GRID BASED ON NORTH CAROLINA PLANE COORDINATE SYSTEM
LAMBERT CONFORMAL CONIC PROJECTION