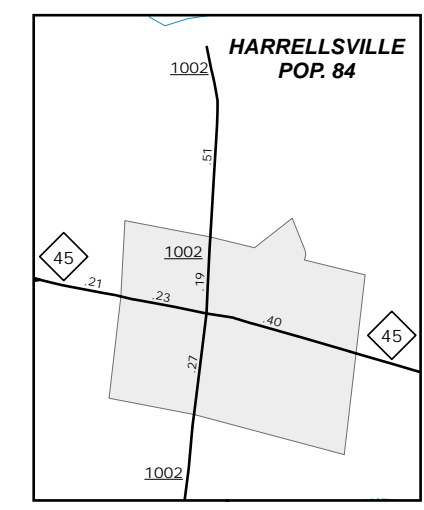
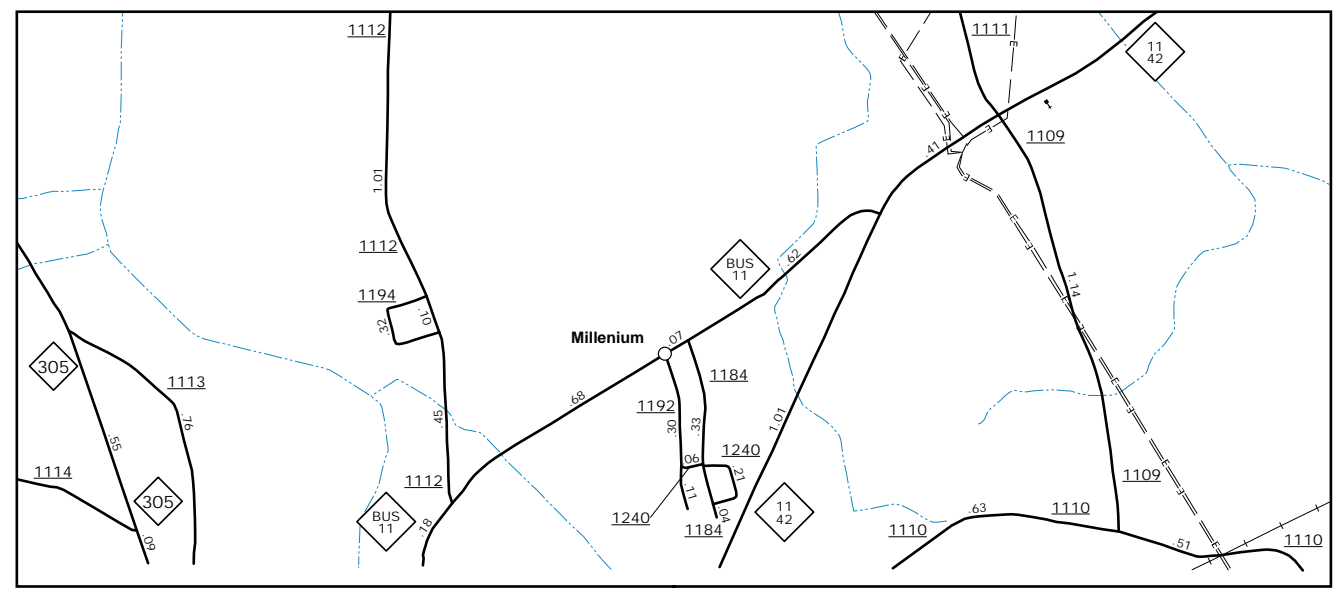
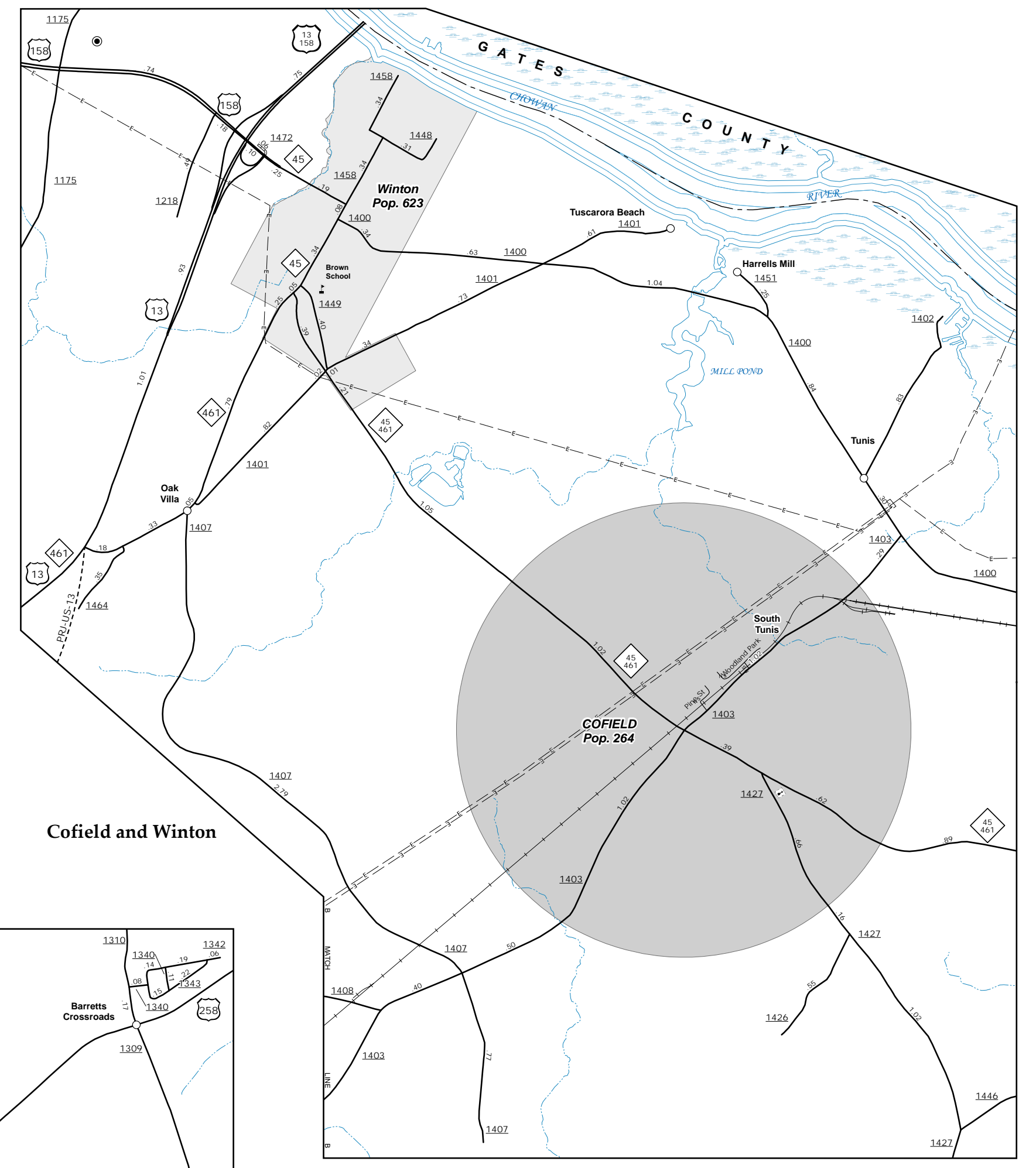


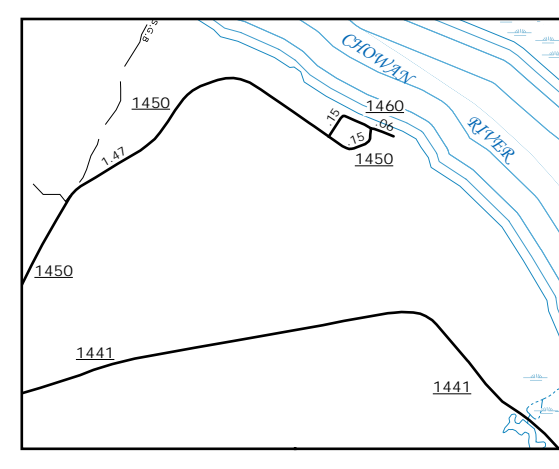
Como
 Southwest Murfreesboro



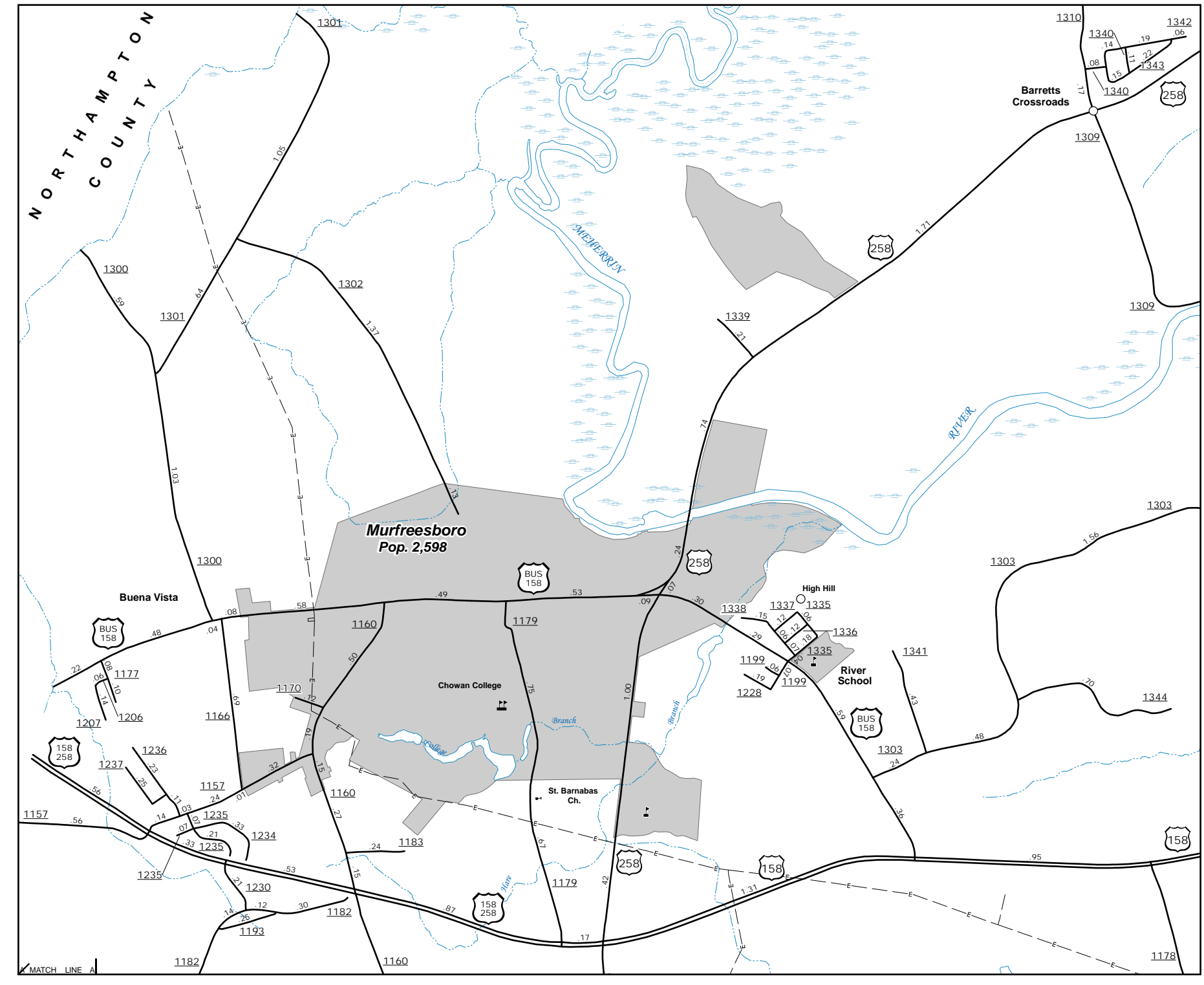
Harrellsville
 Cofield and Winton



Milenium





SR 1450 and Vicinity



Murfreesboro

The Mapping Section's goal is to provide the most accurate and current information possible. Map data is compiled from various sources and is not guaranteed to be 100% accurate. The information shown on this map was last updated in June 2022. For additional information, visit www.ncdot.gov/transportation/sraa/mapping and click on Data Providers or contact us by phone at (919) 855-9400.

COPIES OF THIS MAP ARE AVAILABLE FOR PURCHASE AT A PUBLIC NOTIONAL COST. ADDRESS: N.C. DEPARTMENT OF TRANSPORTATION, SR/AA/MAPPING SECTION, 4809 BERNI, C.D., COLUMBIANA, NC 27838


ENLARGED MUNICIPAL AND SUBURBAN AREAS
HERTFORD COUNTY
NORTH CAROLINA
 PREPARED BY THE
 NORTH CAROLINA DEPARTMENT OF TRANSPORTATION
 OPERATIONS PROGRAM MANAGEMENT UNIT - MAPPING SECTION
 IN COOPERATION WITH THE
 U.S. DEPARTMENT OF TRANSPORTATION
 FEDERAL HIGHWAY ADMINISTRATION
 SCALE

 10,000 FOOT GRID BASED ON NORTH CAROLINA PLANE COORDINATE SYSTEM
 LAMBERT CONFORMAL CONIC PROJECTION
 SHEET 2 OF 2