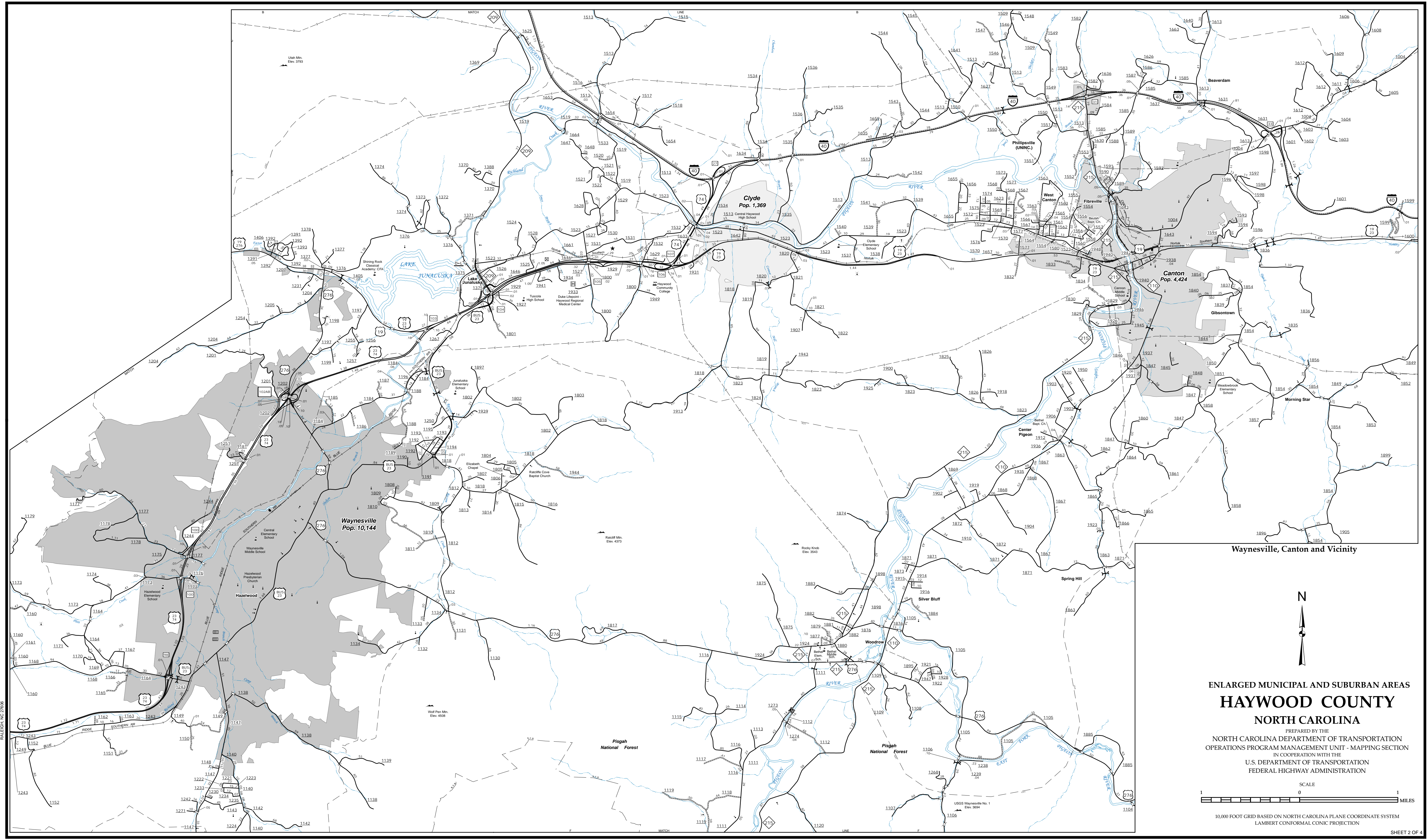
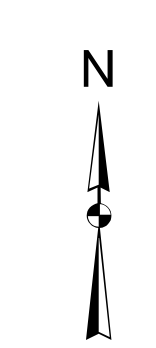


The Mapping Section's goal is to provide the most accurate and current information possible. Map data is compiled from various sources including aerial photography, GIS data, and other public information. While every effort is made to ensure the accuracy and completeness of the information, the user assumes all responsibility for any errors or omissions. For more information, visit <http://www.ncdot.gov/transportation/mapping> and click on Data Providers or contact us by phone at (919) 855-8480.

COPIES OF THIS MAP ARE AVAILABLE AT THE PUBLIC INFORMATION COST ADDRESS ABOVE.
N.C. DEPARTMENT OF TRANSPORTATION
MAP-MAPPING SECTION
4809 BERRY LANE
RALEIGH, NC 27609

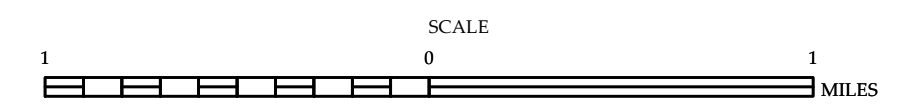


Waynesville, Canton and Vicinity



ENLARGED MUNICIPAL AND SUBURBAN AREAS HAYWOOD COUNTY NORTH CAROLINA

PREPARED BY THE
NORTH CAROLINA DEPARTMENT OF TRANSPORTATION
OPERATIONS PROGRAM MANAGEMENT UNIT - MAPPING SECTION
IN COOPERATION WITH THE
U.S. DEPARTMENT OF TRANSPORTATION
FEDERAL HIGHWAY ADMINISTRATION



10,000 FOOT GRID BASED ON NORTH CAROLINA PLANE COORDINATE SYSTEM
LAMBERT CONFORMAL CONIC PROJECTION