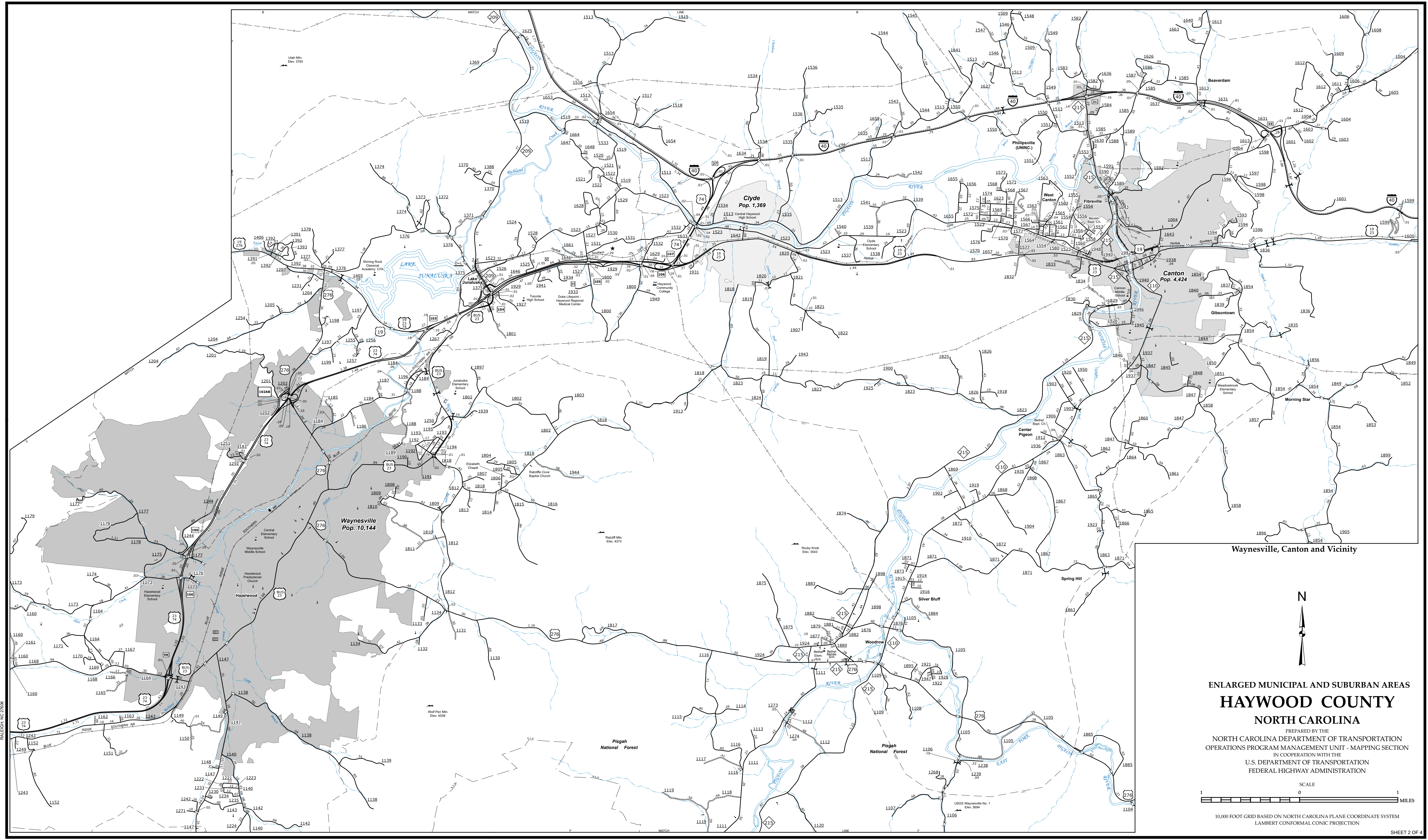
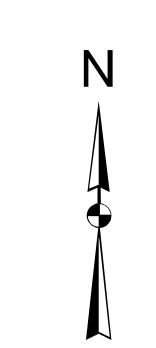


The Mapping Section's goal is to provide the most accurate and current information possible. Map data is compiled from various sources including aerial photography, ground surveys, and other data. The accuracy of the information is not guaranteed. For more information, please visit our website at [www.ncdot.gov/transportation/ops/programmanagementunit/mappingsection](http://www.ncdot.gov/transportation/ops/programmanagementunit/mappingsection) and click on Data Providers or contact us by phone at (919) 855-8480.

COPIES OF THIS MAP ARE AVAILABLE AT THE PUBLIC INFORMATION COST ADDRESS LISTED BELOW.  
N.C. DEPARTMENT OF TRANSPORTATION  
MAP-MAPPING SECTION  
6809 BERRY RD.  
Raleigh, NC 27609

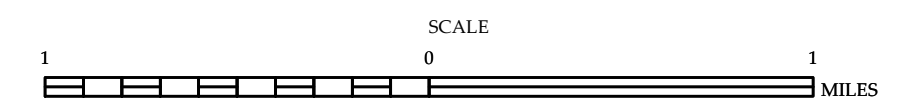


Waynesville, Canton and Vicinity



# ENLARGED MUNICIPAL AND SUBURBAN AREAS HAYWOOD COUNTY NORTH CAROLINA

PREPARED BY THE  
NORTH CAROLINA DEPARTMENT OF TRANSPORTATION  
OPERATIONS PROGRAM MANAGEMENT UNIT - MAPPING SECTION  
IN COOPERATION WITH THE  
U.S. DEPARTMENT OF TRANSPORTATION  
FEDERAL HIGHWAY ADMINISTRATION



10,000 FOOT GRID BASED ON NORTH CAROLINA PLANE COORDINATE SYSTEM  
LAMBERT CONFORMAL CONIC PROJECTION