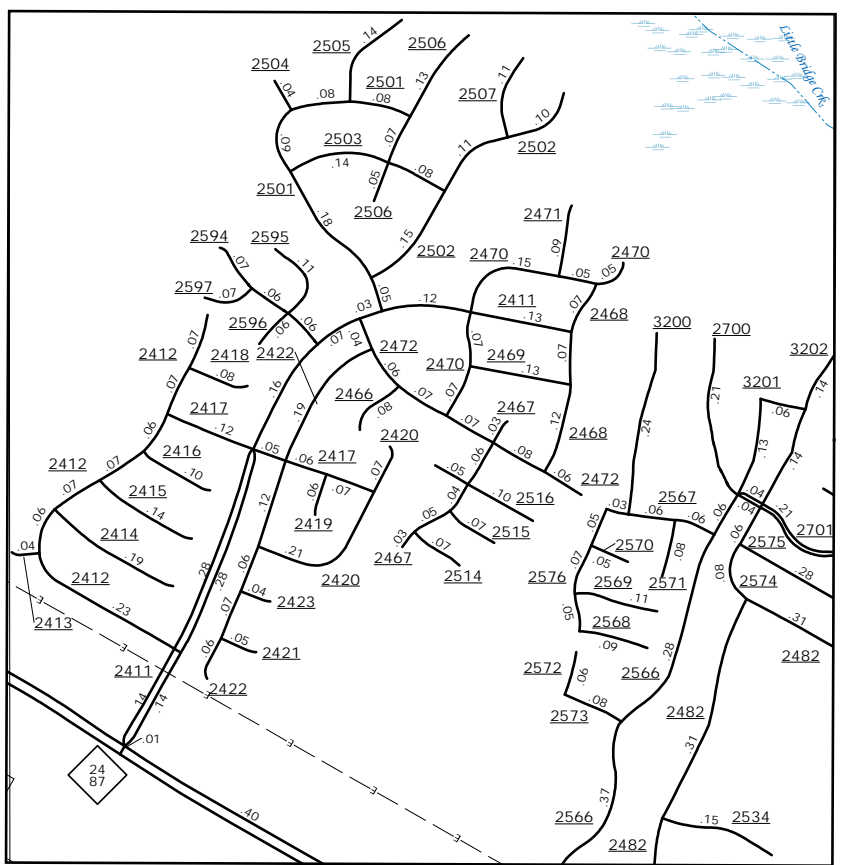
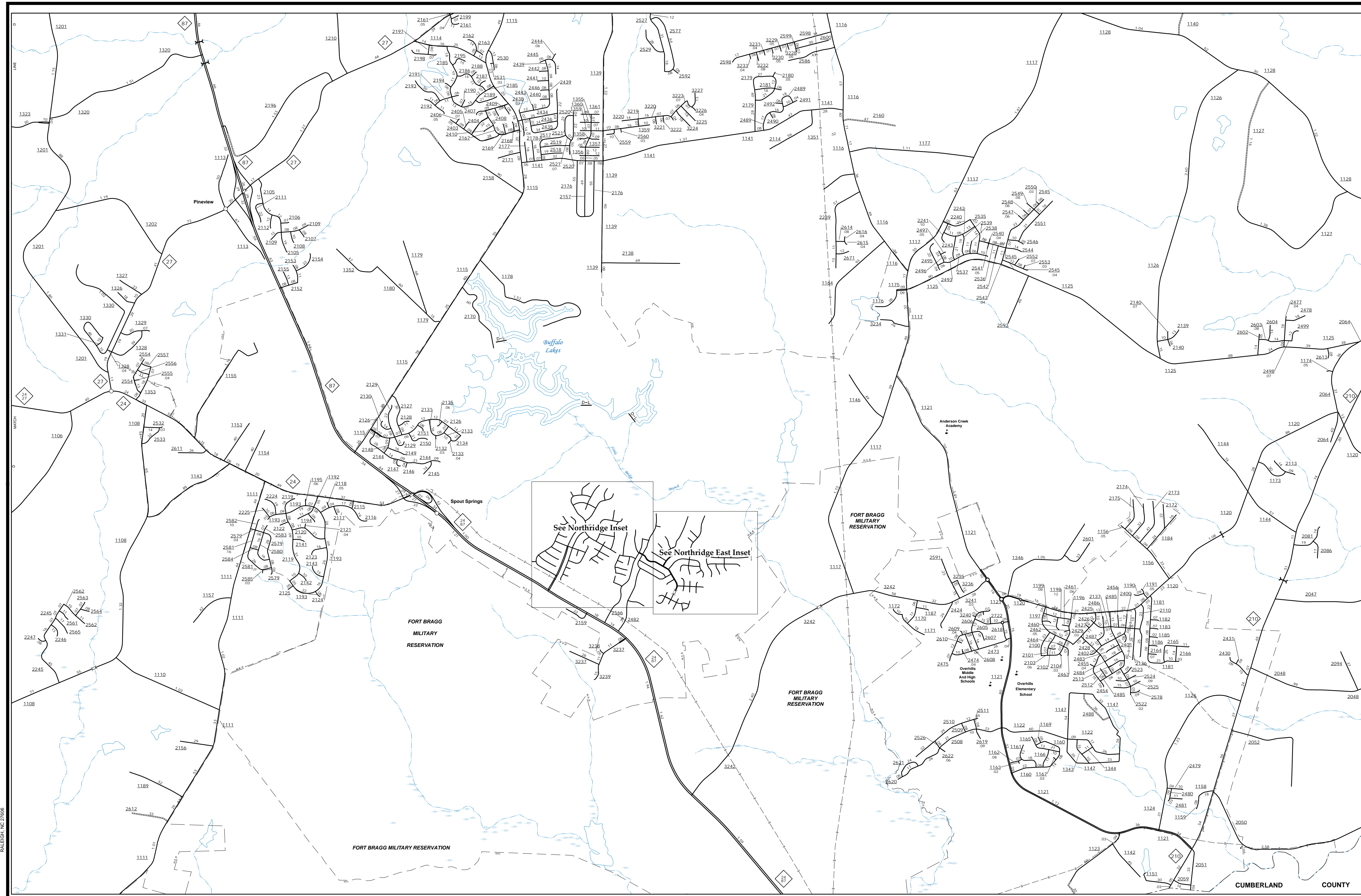
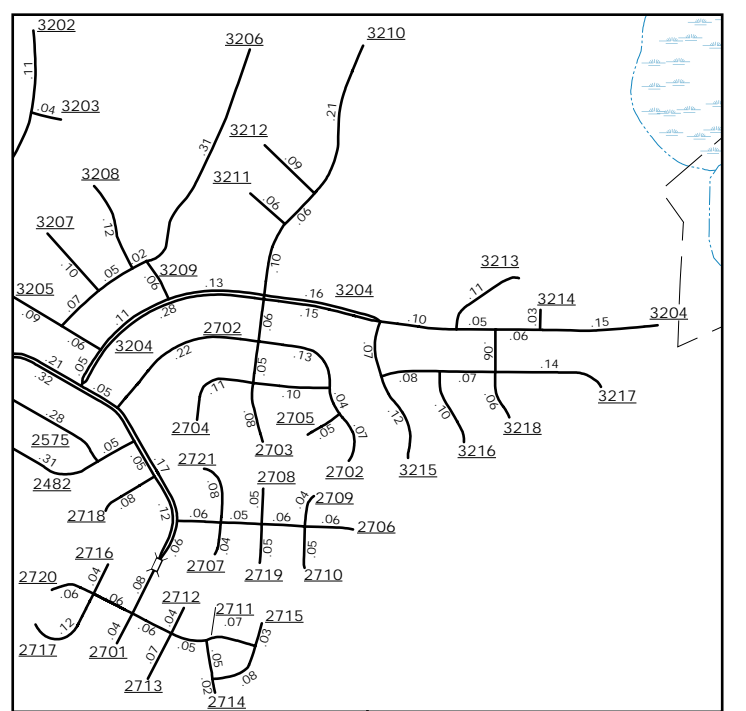
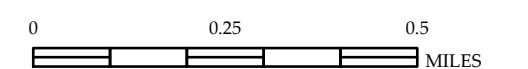


The Mapping Section's goal is to provide the most accurate and current information possible. Map data is compiled from various sources and is subject to change. The accuracy of the information is not guaranteed. The accuracy of the information is not guaranteed. The accuracy of the information is not guaranteed.

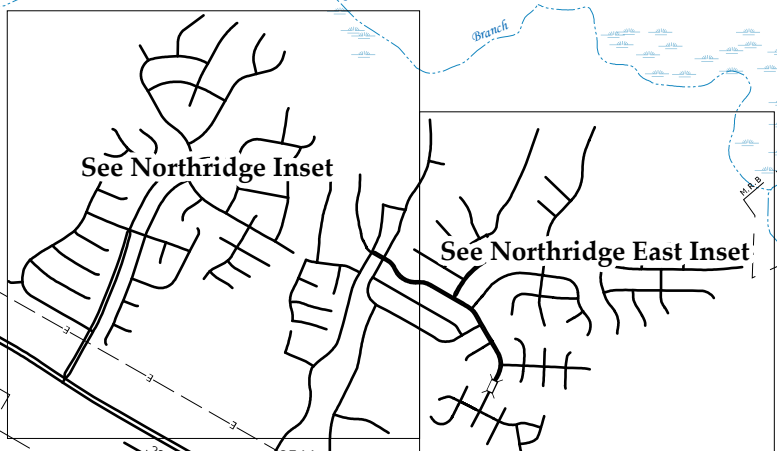
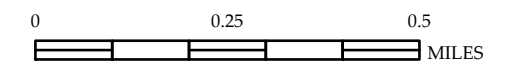
COPIES OF THIS MAP ARE AVAILABLE FROM THE NORTH CAROLINA DEPARTMENT OF TRANSPORTATION OPERATIONS PROGRAM MANAGEMENT UNIT - MAPPING SECTION, 4609 BERRY LANE, RALEIGH, NC 27606



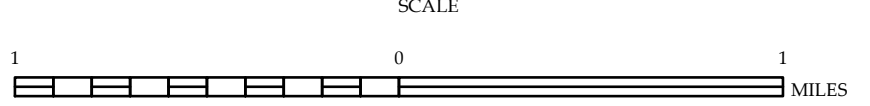
Northridge



Northridge East



ENLARGED MUNICIPAL AND SUBURBAN AREAS
HARNETT COUNTY
 NORTH CAROLINA
 PREPARED BY THE
 NORTH CAROLINA DEPARTMENT OF TRANSPORTATION
 OPERATIONS PROGRAM MANAGEMENT UNIT - MAPPING SECTION
 IN COOPERATION WITH THE
 U.S. DEPARTMENT OF TRANSPORTATION
 FEDERAL HIGHWAY ADMINISTRATION



10,000 FOOT GRID BASED ON NORTH CAROLINA PLANE COORDINATE SYSTEM LAMBERT CONFORMAL CONIC PROJECTION

Overhills