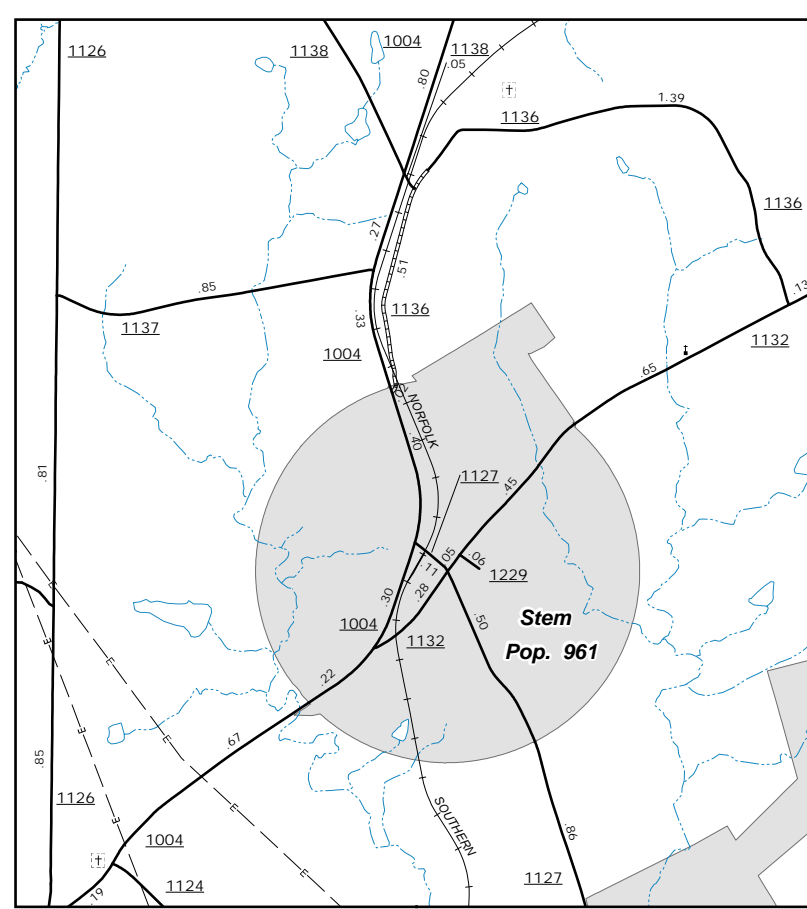
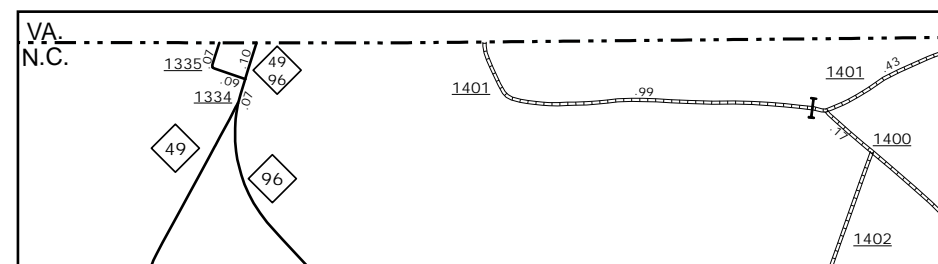


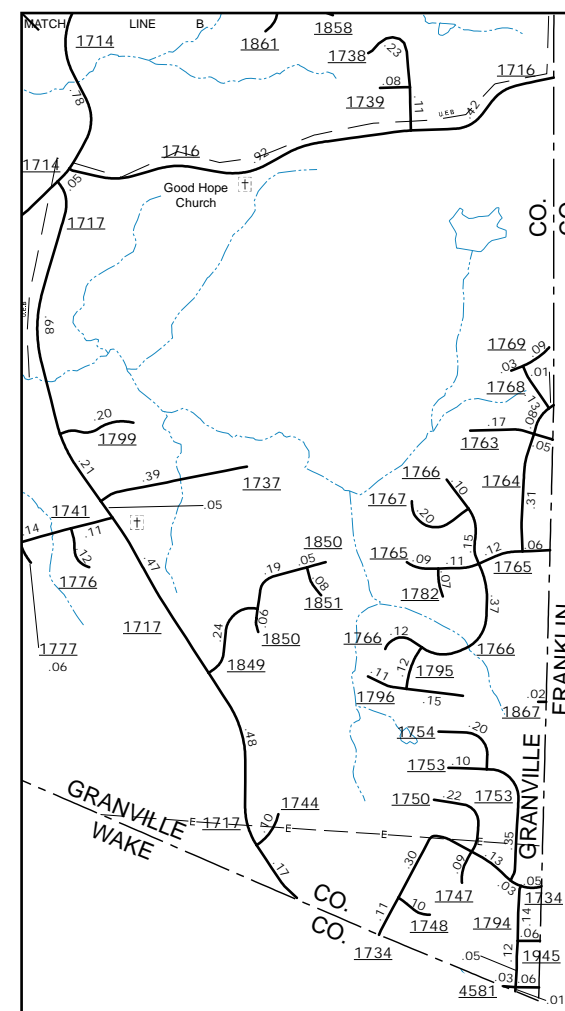
**Stovall**  
Pop. 324



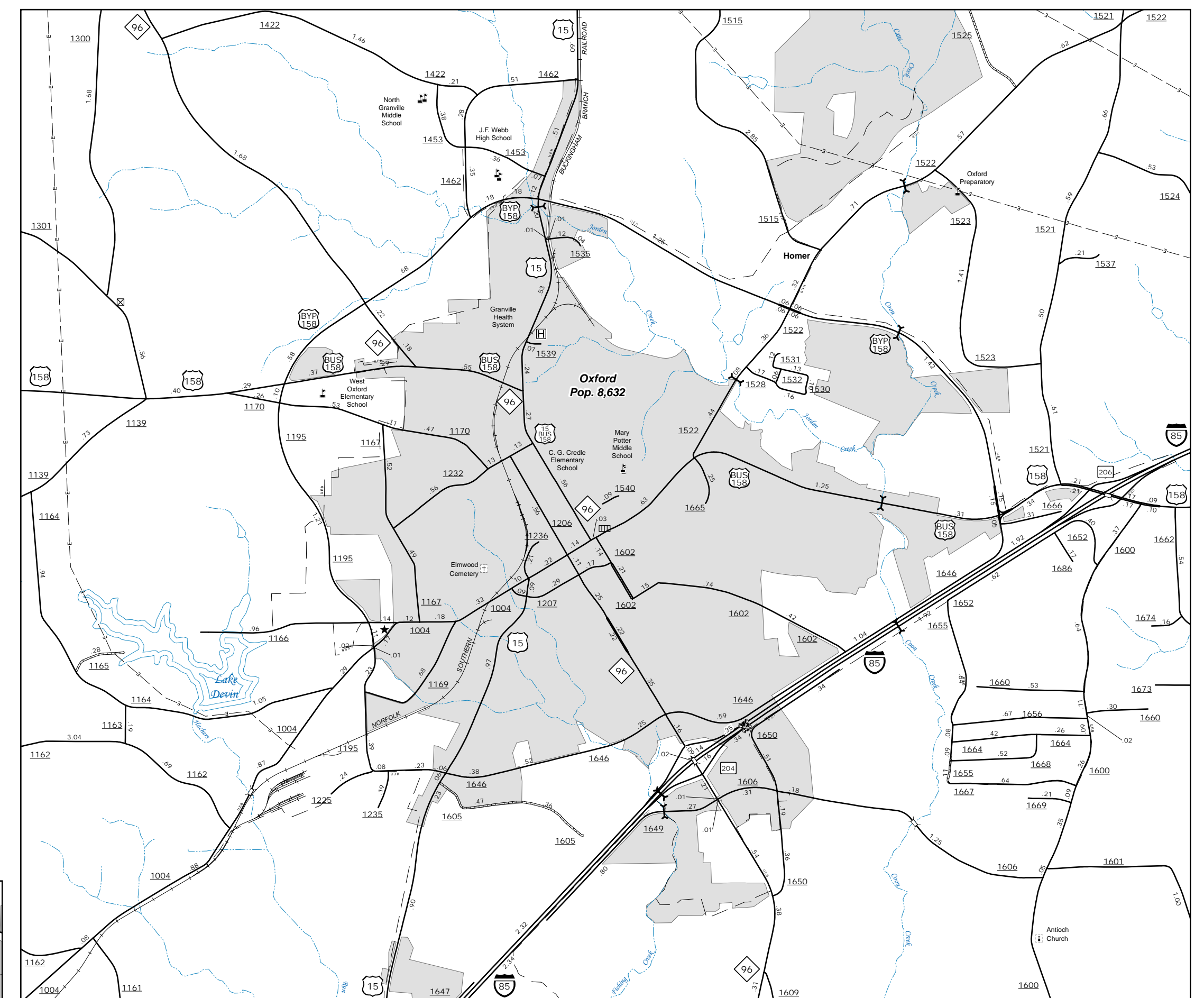
**Stem**  
Pop. 961



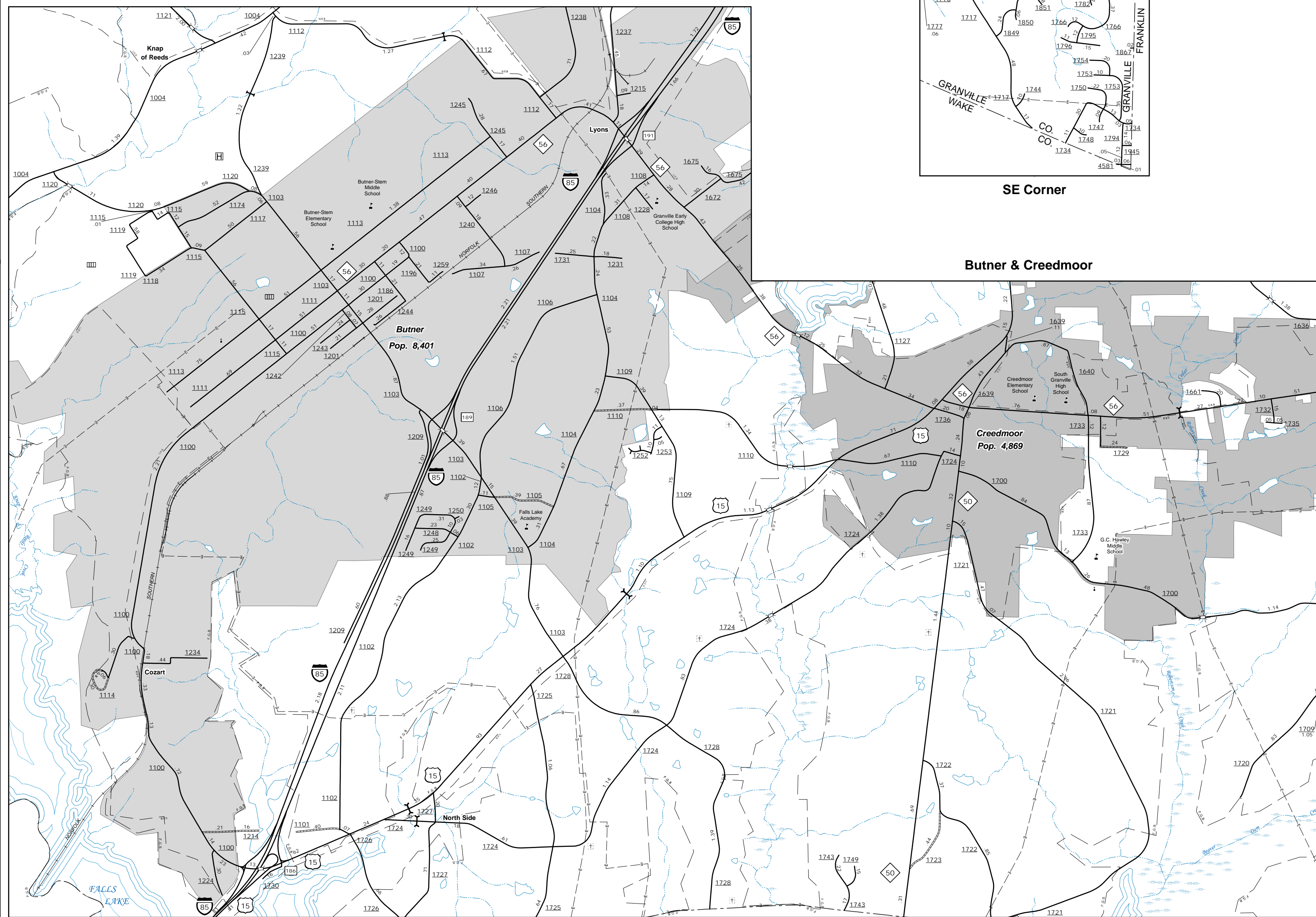
**Virginia**



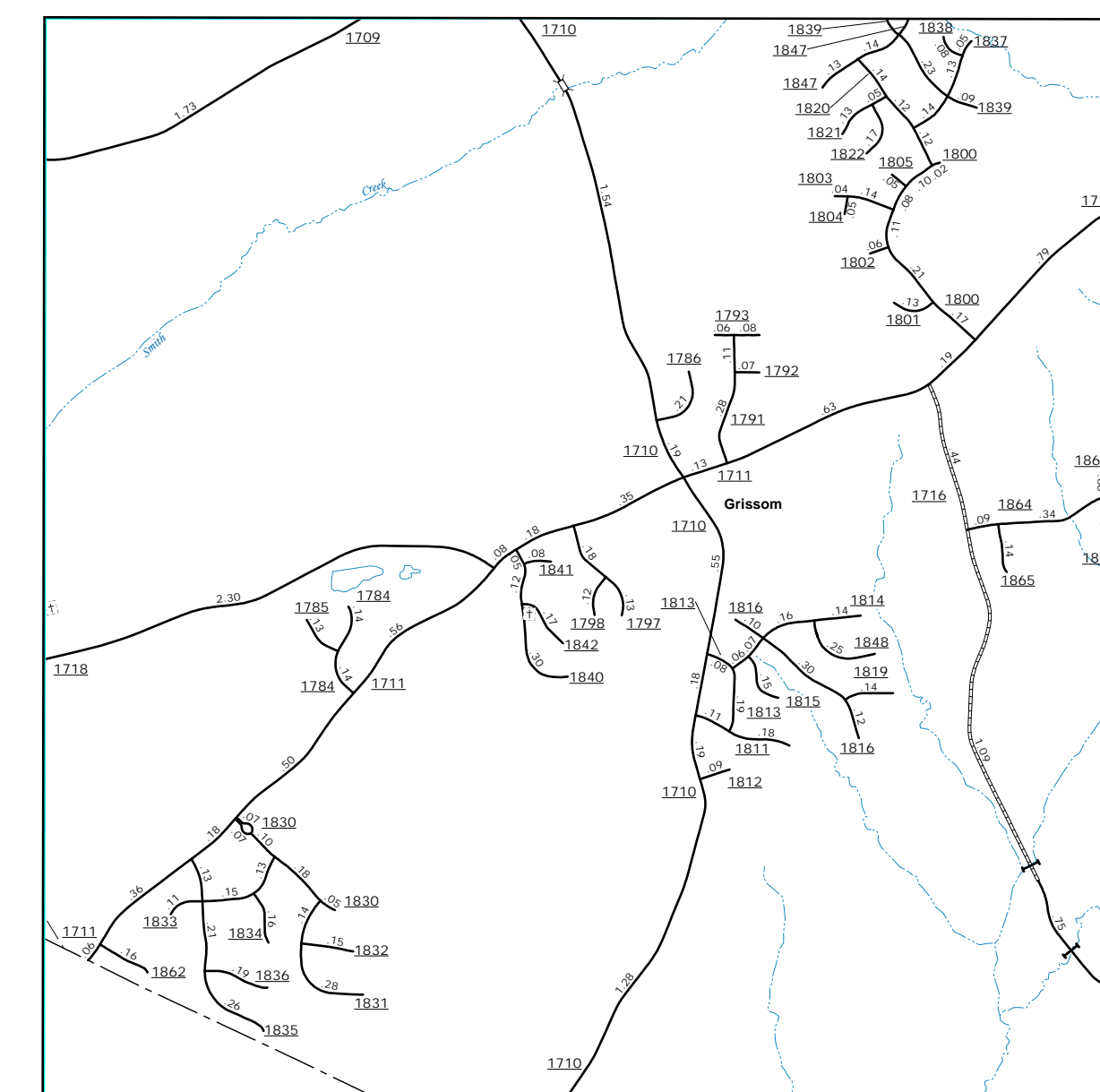
**SE Corner**



**Oxford**  
Pop. 8,632



**Butner & Creedmoor**  
Pop. 8,401



**Grissom**  
Pop. 4,869

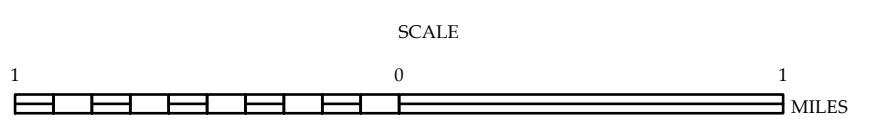
The Mapping Section's goal is to provide the most accurate and current information possible. Map data is compiled from various sources and is subject to change. The accuracy of the data is not guaranteed. The accuracy of the data is dependent on the accuracy of the data provided by the user. For additional information, visit <http://www.ncdot.gov/MapInfo/MapInfo.aspx> and click on Data Provider or contact us by phone at (919) 855-8480.

COPIES OF THIS MAP ARE AVAILABLE FOR PURCHASE AT A PUBLIC NOMINAL COST. ADDRESS: N.C. DEPARTMENT OF TRANSPORTATION, MSAU - MAPPING SECTION, 4809 BERRY LANE, RALEIGH, NC 27609



ENLARGED MUNICIPAL AND SUBURBAN AREAS  
**GRANVILLE COUNTY**  
 NORTH CAROLINA

PREPARED BY THE  
 NORTH CAROLINA DEPARTMENT OF TRANSPORTATION  
 OPERATIONS PROGRAM MANAGEMENT UNIT - MAPPING SECTION  
 IN COOPERATION WITH THE  
 U.S. DEPARTMENT OF TRANSPORTATION  
 FEDERAL HIGHWAY ADMINISTRATION



10,000 FOOT GRID BASED ON NORTH CAROLINA PLANE COORDINATE SYSTEM  
 LAMBERT CONFORMAL CONIC PROJECTION